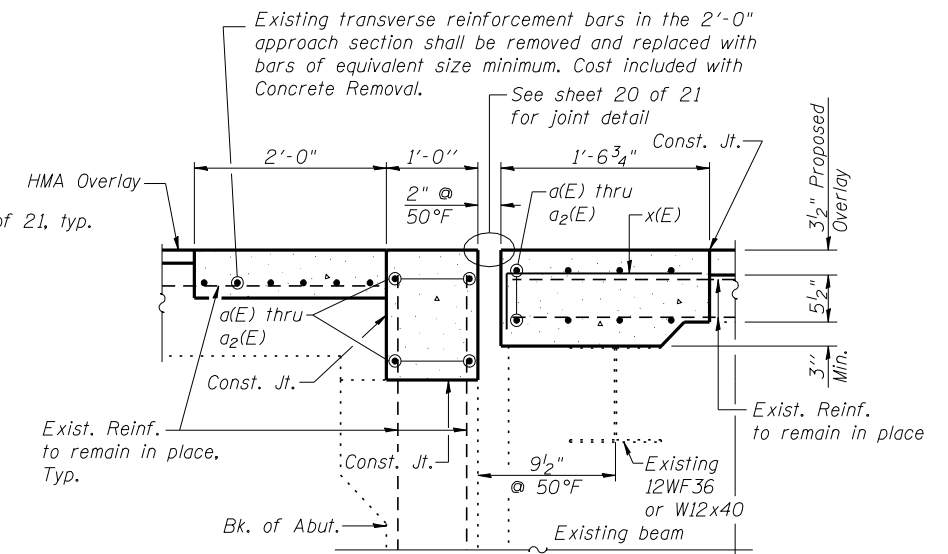
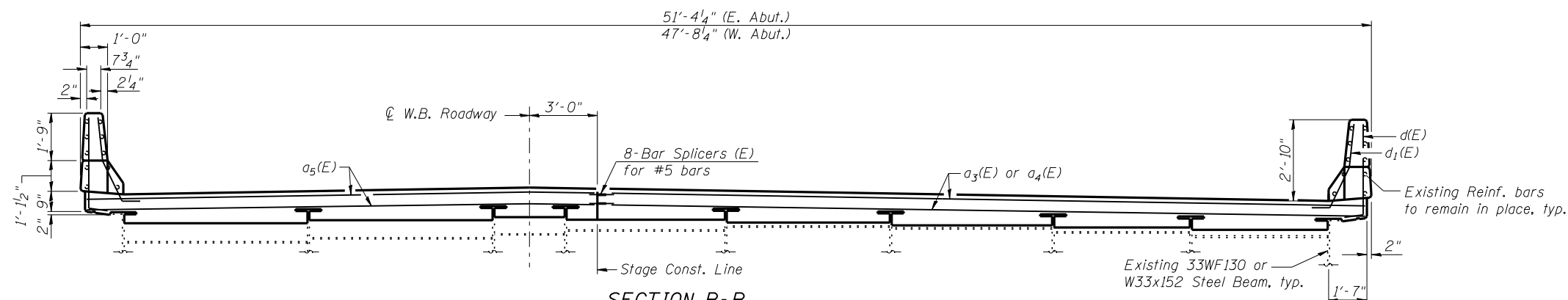


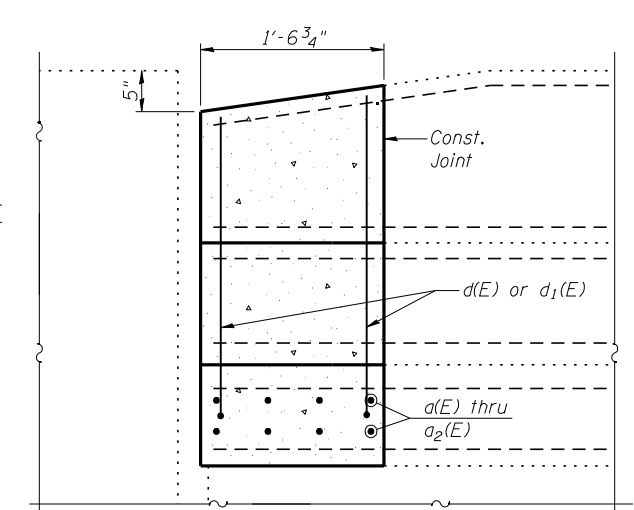
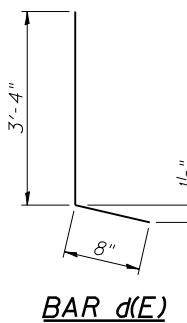
SECTION C-C
(Dimensions @ Rt. L's)



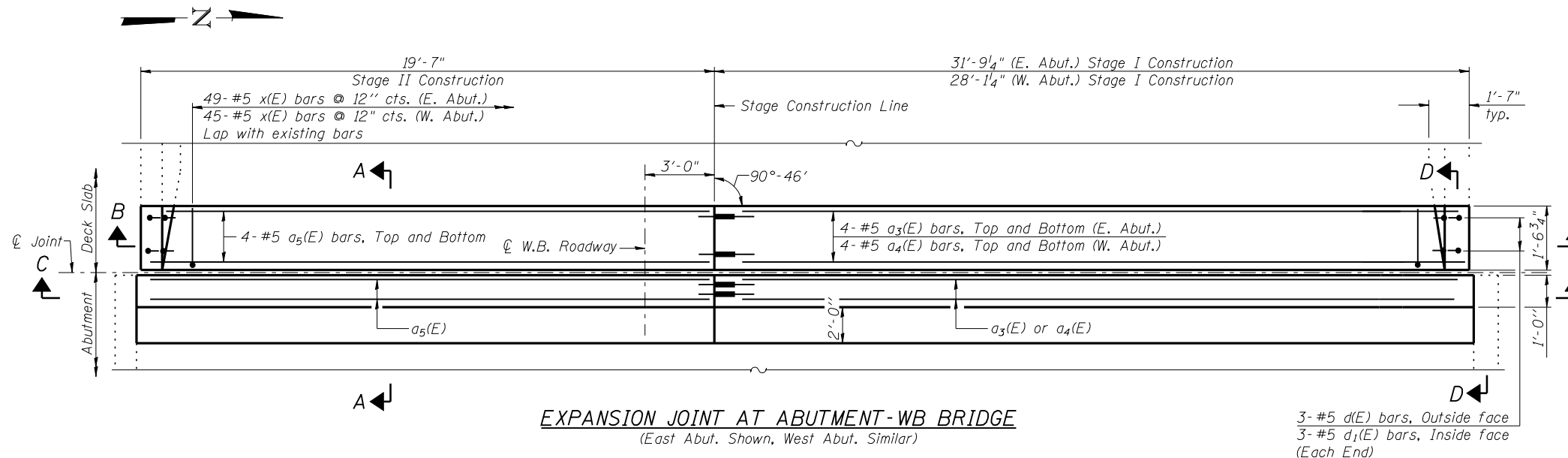
SECTION A-A
(Dimension @ Rt. L's)



SECTION B-B
(Dimensions @ Rt. L's)

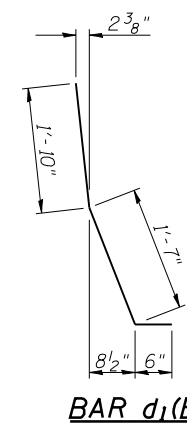


SECTION D-D

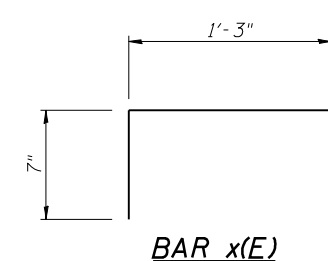


EXPANSION JOINT AT ABUTMENT-WB BRIDGE
(East Abut. Shown, West Abut. Similar)

3- #5 d(E) bars, Outside face
3- #5 d1(E) bars, Inside face
(Each End)



BAR d1(E)



BAR x(E)

BILL OF MATERIAL
(Both WB Abutments)

Bar	No.	Size	Length	Shape	
a ₃ (E)	12	#5	31'-4"	—	
a ₄ (E)	12	#5	27'-8"	—	
a ₅ (E)	24	#5	19'-2"	—	
d(E)	12	#5	4'-0"	┘	
d ₁ (E)	12	#5	3'-11"	┘	
x(E)	94	#5	1'-10"	┘	
Reinforcement Bars, Epoxy Coated				Pound	1500
Concrete Superstructure				Cu. Yds.	16.2
Protective Coat				Sq. Yd.	219

(Sheet 2 of 2)