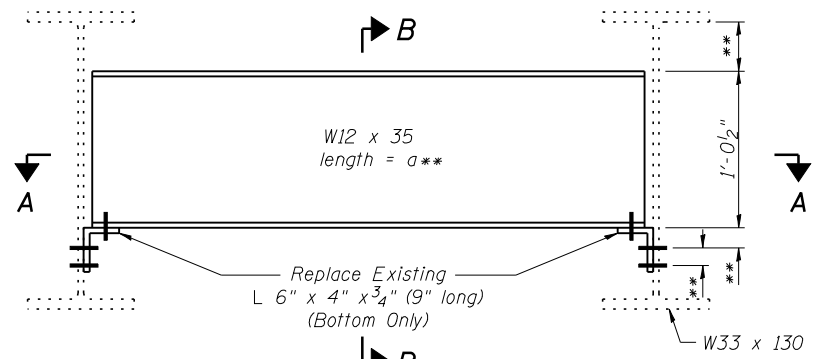
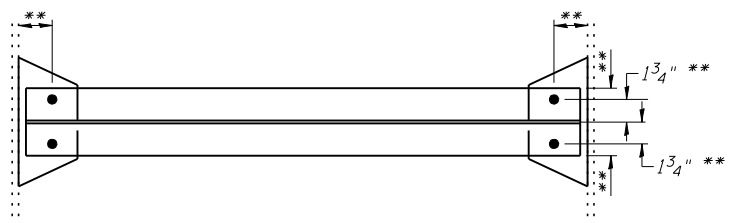


FRAMING PLAN

(Showing Beam Straightening and Diaphragm Replacement)

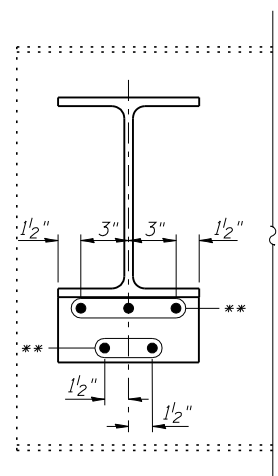


DIAPHRAGM ELEVATION



SECTION A-A

** Match existing dimensions. Remove existing rivets and replace with 3/4" φ H.S. Bolts with hardened washers. Use existing members as a template when drilling new holes in new members.



SECTION B-B

*** DIAPHRAGM REPLACEMENT**

No.	length a**
1	4'-11 1/16"
2	6'-9 1/16"
3	6'-8 1/16"
4	4'-9 1/16"
5	7'-8 1/16"

BILL OF MATERIAL

ITEM	UNIT	TOTAL
Structural Steel Repair	Pound	2694

(Sheet 1 of 2)