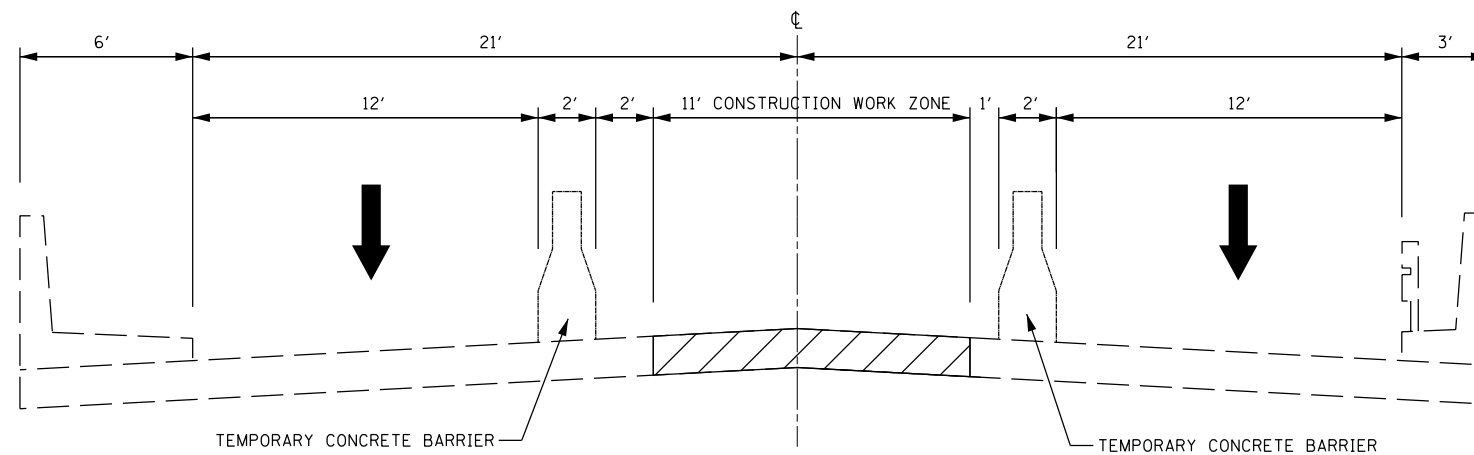
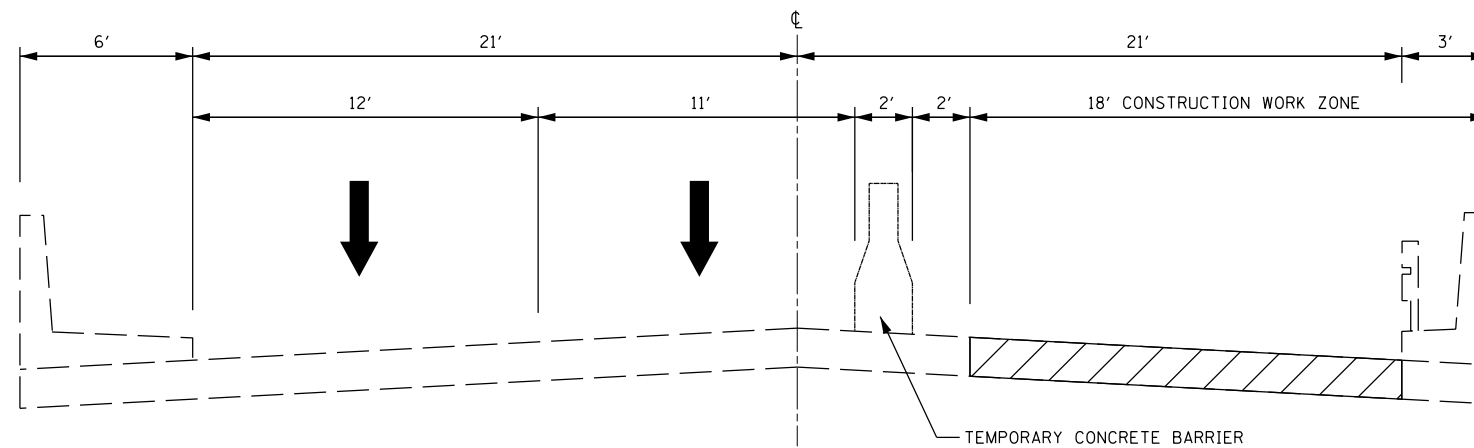


SOUTHBOUND ILLINOIS ROUTE 43
STAGE I
(LOOKING NORTH)



SOUTHBOUND ILLINOIS ROUTE 43
STAGE II
(LOOKING NORTH)



SOUTHBOUND ILLINOIS ROUTE 43
STAGE III
(LOOKING NORTH)

STAGE I

- ESTABLISH TRAFFIC CONTROL AS DETAILED IN THE TRAFFIC CONTROL PLANS
- INSTALL TEMPORARY CONCRETE BARRIERS, IMPACT ATTENUATOR AND TEMPORARY PAVEMENT MARKINGS AS SHOWN ON PLAN
- PERFORM DECK SLAB REPAIR AND RECONSTRUCT JOINTS ON THE WEST 16' OF BRIDGE
- PERFORM STRUCTURAL REPAIR OF CURB
- PERFORM STRUCTURAL REPAIR OF PIER 5 AND PIER 6
- RELOCATE TEMPORARY CONCRETE BARRIERS

STAGE II

- ESTABLISH TRAFFIC CONTROL AS DETAILED IN THE TRAFFIC CONTROL PLANS
- INSTALL TEMPORARY CONCRETE BARRIERS, IMPACT ATTENUATORS AND TEMPORARY PAVEMENT MARKINGS AS SHOWN ON PLAN
- PERFORM DECK SLAB REPAIR AND RECONSTRUCT JOINTS ON THE CENTER 11' OF BRIDGE
- REMOVE AND RELOCATE TEMPORARY CONCRETE BARRIERS

STAGE III

- ESTABLISH TRAFFIC CONTROL AS DETAILED IN THE TRAFFIC CONTROL PLANS
- INSTALL TEMPORARY CONCRETE BARRIERS, IMPACT ATTENUATOR AND TEMPORARY PAVEMENT MARKINGS AS SHOWN ON PLAN
- PERFORM DECK SLAB REPAIR AND RECONSTRUCT JOINTS ON THE EAST 15' OF BRIDGE
- PERFORM STRUCTURAL REPAIR OF CURB
- REMOVE TEMPORARY CONCRETE BARRIERS AND INSTALL POLYUREA PAVEMENT MARKINGS

NOTES:

ONE (1) CHANGEABLE MESSAGE SIGN IN ADVANCE OF CONSTRUCTION AREA (LOCATION AS DIRECTED BY THE ENGINEER)

PRINTED DATE: 7/11/2013
 FILE NAME: K:\Projects\DOT\163-13\Herlem over MWRDC RRV\CAD\Drawings\Sheets\Southbound Bridge Repair\04.D160107-ah1-MOT_typical.sdg



| | | |
|-----------------------------|------------------|-----------|
| USER NAME = #USER# | DESIGNED - JY | REVISED - |
| | DRAWN - DN | REVISED - |
| PLOT SCALE = 20.0000' / in. | CHECKED - MR | REVISED - |
| PLOT DATE = 7/11/2013 | DATE - 7/11/2013 | REVISED - |

**STATE OF ILLINOIS
DEPARTMENT OF TRANSPORTATION**

**MAINTENANCE OF TRAFFIC
TYPICAL SECTIONS**

| F.A.P. RTE | SECTION | COUNTY | TOTAL SHEETS | SHEET NO |
|------------------------------|----------------|--------|--------------|----------|
| 348 | 0708.3A-BR(11) | COOK | 25 | 4 |
| CONTRACT NO 60T07 | | | | |
| ILLINOIS FEDERAL AID PROJECT | | | | |