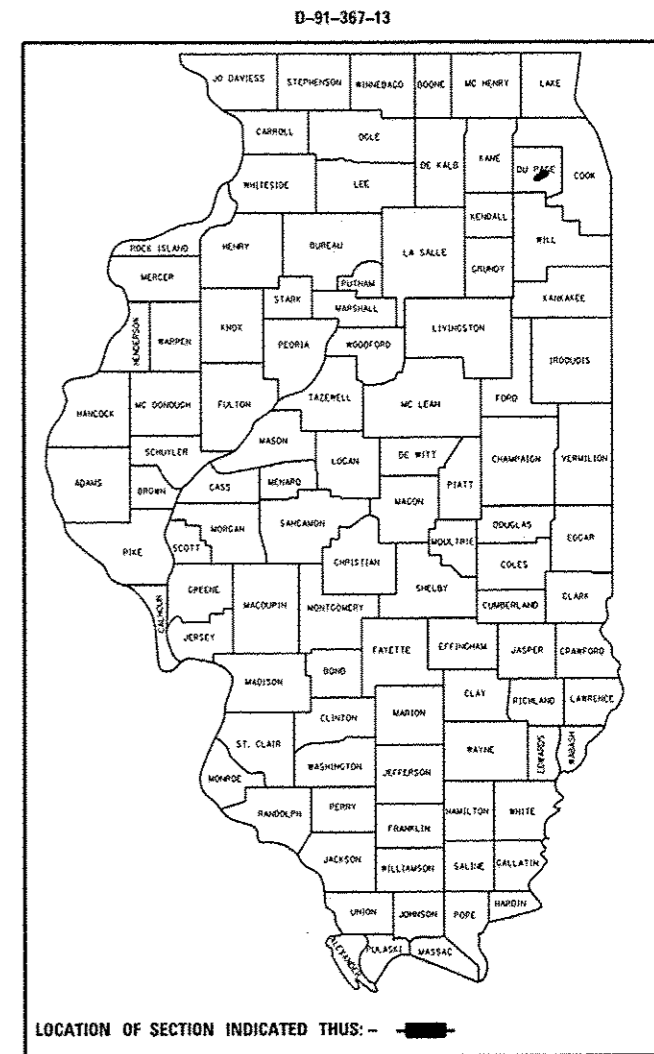


STATE OF ILLINOIS
DEPARTMENT OF TRANSPORTATION
DIVISION OF HIGHWAYS
PROPOSED
HIGHWAY PLANS

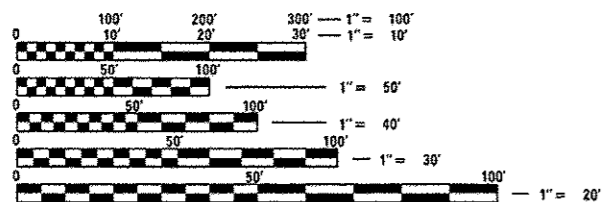
FAP ROUTE 870: IL ROUTE 53
SECTION: 2013-037DM
IL ROUTE 56 TO OSAGE AVE.
BUILDING DEMOLITION
DUPAGE COUNTY
C-91-367-13

FOR INDEX OF SHEETS, SEE SHEET NO. 2

F.A.P. RTE.	SECTION	COUNTY	TOTAL SHEETS	SHEET NO.
870	2013-037DM	DUPAGE	13	1
ILLINOIS			CONTRACT NO. 60W74	



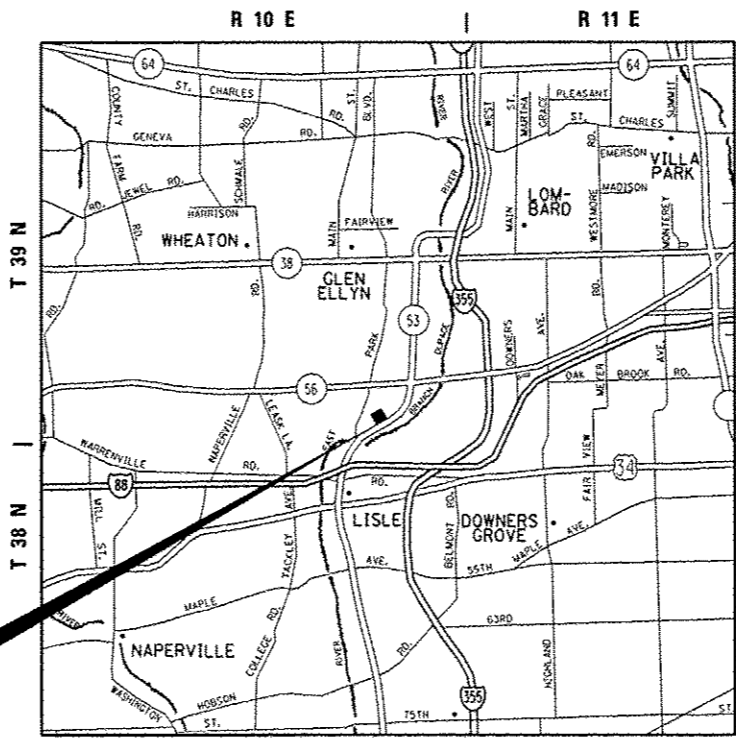
THE IMPROVEMENT IS LOCATED
IN THE VILLAGE OF GLEN ELLYN



FULL SIZE PLANS HAVE BEEN PREPARED USING STANDARD ENGINEERING SCALES. REDUCED SIZED PLANS WILL NOT CONFORM TO STANDARD SCALES. IN MAKING MEASUREMENTS ON REDUCED PLANS, THE ABOVE SCALES MAY BE USED.

J.U.L.I.E.
JOINT UTILITY LOCATION INFORMATION FOR EXCAVATION
1-800-892-0123
OR 811

IMPROVEMENT LOCATION



MILTON TOWNSHIP



TRAFFIC DATA:
2011 ADT = 16,900
POSTED SPEED LIMIT = 45 MPH

STATE OF ILLINOIS
DEPARTMENT OF TRANSPORTATION
DIVISION OF HIGHWAYS

SUBMITTED 5/20/13

John F. ...
DEPUTY DIRECTOR OF HIGHWAYS, REGION ENGINEER

June 28 2013
John D. Baranzollo, P.E.
ENGINEER OF DESIGN AND ENVIRONMENT

June 28 2013
Amer Osman, P.E.
DIRECTOR OF HIGHWAYS, CHIEF ENGINEER

PROJECT ENGINEER: DAN WILGREEN (847) 705-4240
PROJECT MANAGER: KEN ENG (847) 705-4247

CONTRACT NO. 60W74

**PRINTED BY THE AUTHORITY
OF THE STATE OF ILLINOIS**