



LOCATION 3: IL 394 (CALUMET EXPRESSWAY/BISHOP FORD FREEWAY), NB

1800 FEET SOUTH OF THE IL 1 (DIXIE HIGHWAY)/
IL 394 (CALUMET EXPRESSWAY/ BISHOP FORD FREEWAY)
JUNCTION

TRAFFIC DATA:

SPEED LIMIT: 65 MPH
2012 ADT: 75600

PANEL SCHEDULE (TOP)

MARK	PANEL HEIGHT	PANEL WIDTH	QUANTITY	AREA EACH(S.F)	AREA TOTAL(S.F)
T-1	10'-0"	20'-4"	1	203.3	203.3

PANEL SCHEDULE (BOTTOM)

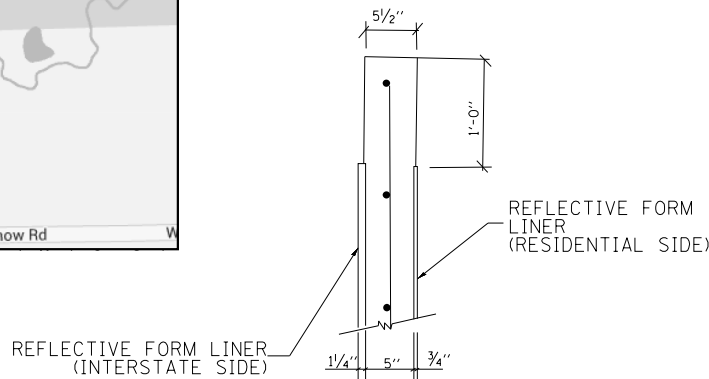
B-4D	6'-11 ⁷ / ₈ "	20'-4"	1	142.2	142.2
------	-------------------------------------	--------	---	-------	-------

BILL OF MATERIAL

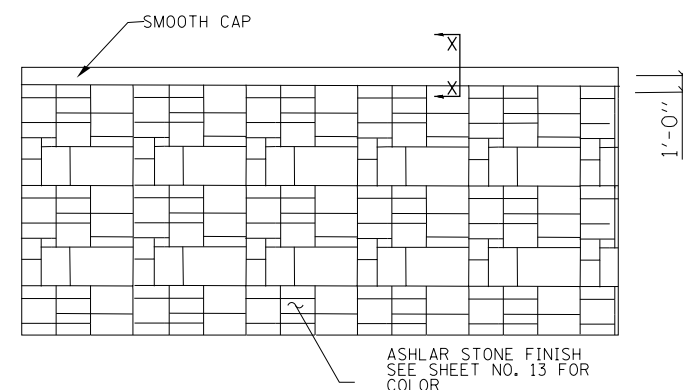
ITEM	UNIT	QUANTITY
CONCRETE REMOVAL	Cu. Yds.	2.4
NOISE ABATEMENT WALL REPAIRS	Lump Sum	1
TEMPORARY EROSION CONTROL BLANKET	Sq. Yds.	9.0
TOPSOIL FURNISH AND PLACE, 4"	Sq. Yds.	9.0
SEEDING CLASS 2A	Acre	0.0019

AREA OF REPAIR= 142.2 SQ FT

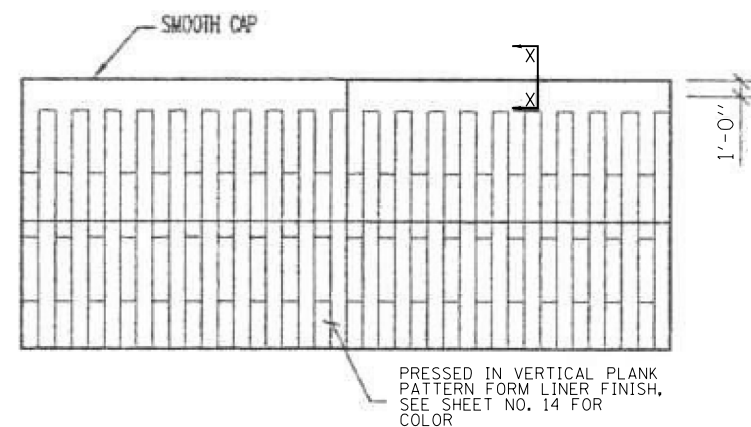
**VILLAGE OF CRETE
CRETE TOWNSHIP
WILL COUNTY**



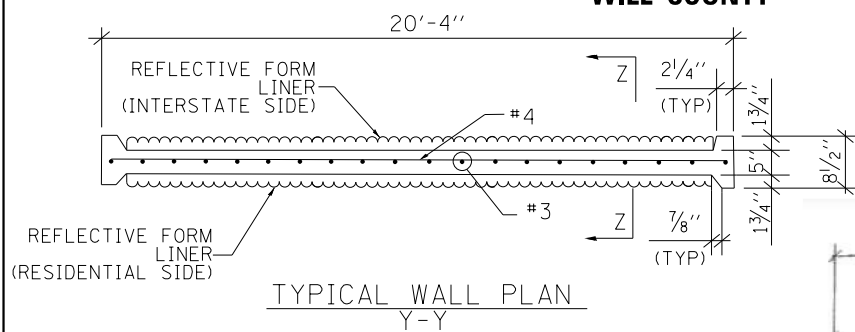
**PANEL SECTION
W/CAP & FINISH
X-X**



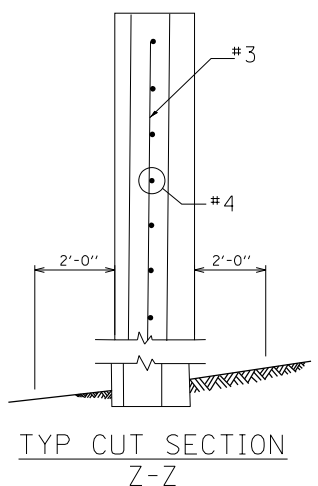
**TYPICAL PANEL DETAIL W/ FINISH
INTERSTATE SIDE**



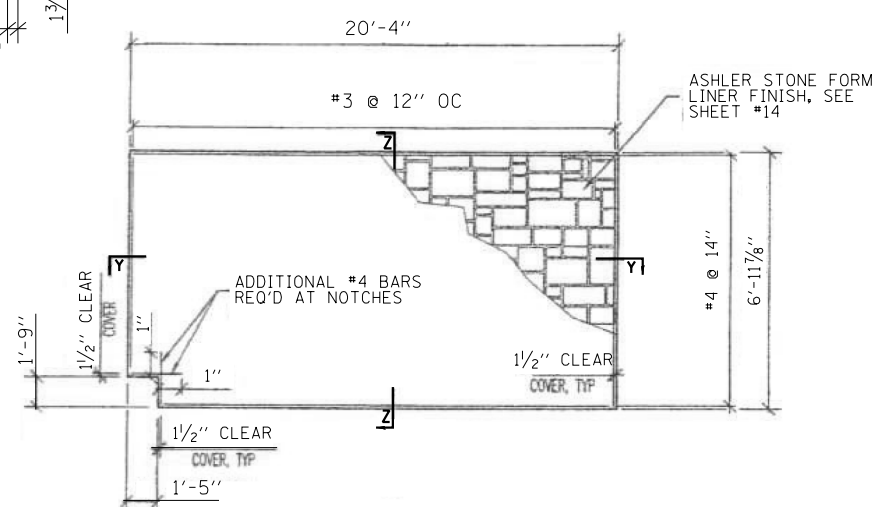
**TYPICAL PANEL DETAIL W/ FINISH
RESIDENTIAL SIDE**



**TYPICAL WALL PLAN
Y-Y**

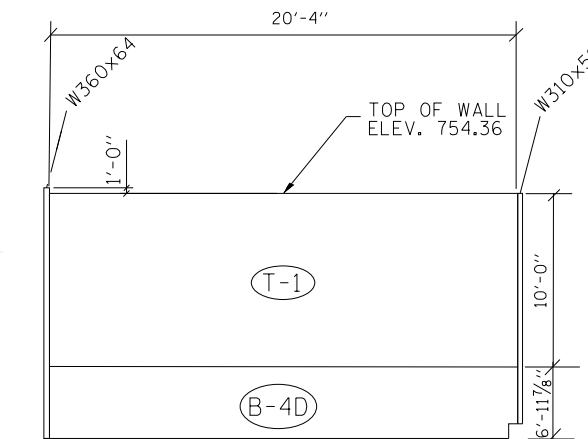


**TYP CUT SECTION
Z-Z**



**TYPICAL BOTTOM WALL PANEL
REINFORCEMENT DETAIL (W/ NOTCH)**

NOTE: NOTCH LOCATED AT THE NORTH
END OF THE PANEL.



**TYPICAL PANEL DETAIL
(LOOKING AT RESIDENTIAL SIDE)**

NOTE:
LIFTING AND REPLACEMENT OF TOP PANEL SHALL
BE INCLUDED IN THE COST OF "CONCRETE REMOVAL".

FILE NAME =	USER NAME = SEYMORECP	DESIGNED -	REVISED -	STATE OF ILLINOIS DEPARTMENT OF TRANSPORTATION	LOCATION 3 (NOISE WALL) IL 394 (CALUMET EXPRESSWAY/BISHOP FORD FREEWAY)		F.A. RTÉ.	SECTION	COUNTY	TOTAL SHEETS	SHEET NO.	
Default	et:\pw\work\p\midot\seymorecp\d0348982\0189013-shr-plan.dgn	DRAWN -	REVISED -		SCALE:	SHEET 1 OF 3 SHEETS	STA.	VAR.	2013-0411	VARIOUS	44	12
	PLOT SCALE = 100.0000' / 1in.	CHECKED -	REVISED -		TO STA.							
	PLOT DATE = 7/11/2013	DATE -	REVISED -									
							CONTRACT NO. 60W86					
ILLINOIS FED. AID PROJECT												