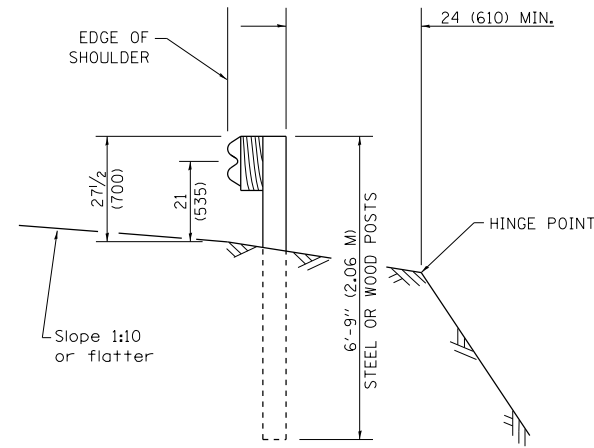


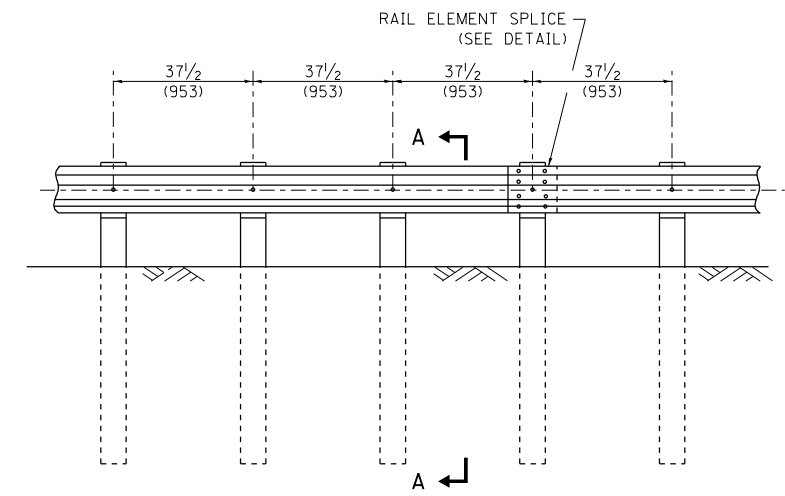
ELEVATION

**TYPE A**

6'-3" (1.905 M) TYPICAL POST SPACING



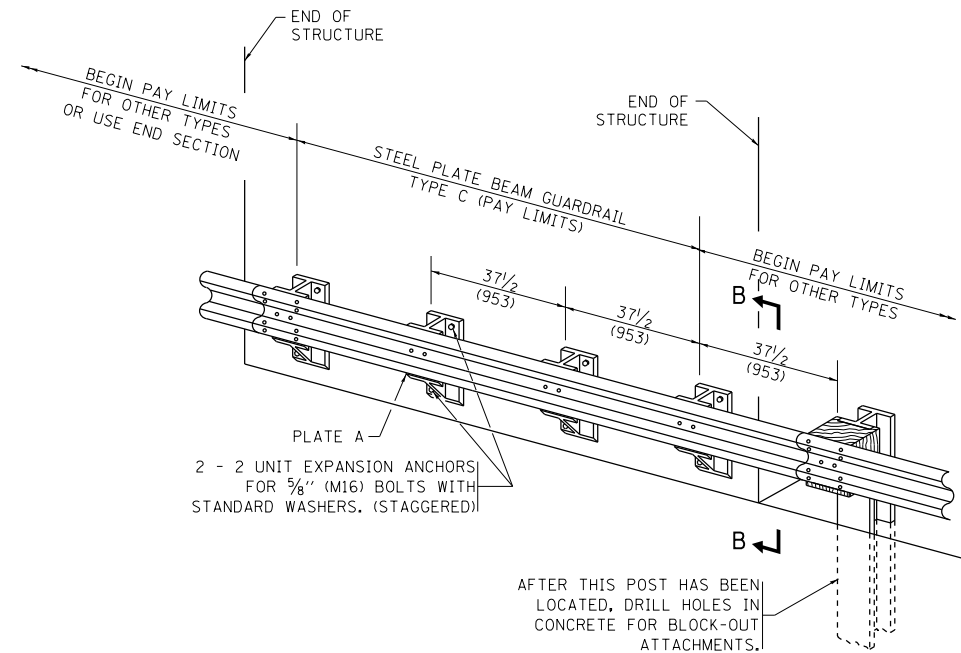
SECTION A-A



ELEVATION

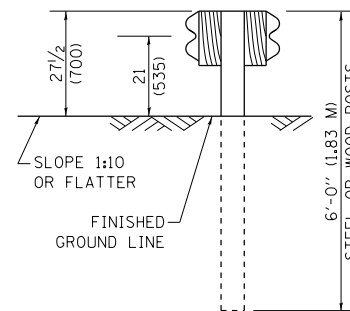
**TYPE A**

37 1/2 (953) CLOSED POST SPACING

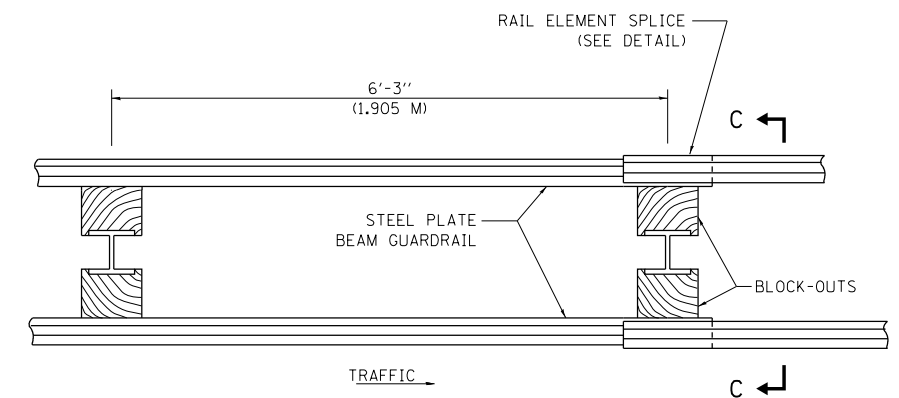


**TYPE C**

37 1/2 (953) BLOCK-OUT SPACING



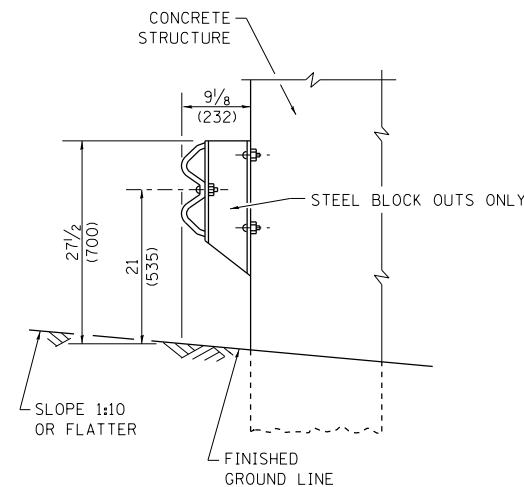
SECTION C-C



PLAN

**TYPE D**

DOUBLE STEEL PLATE BEAM GUARDRAIL  
6'-3" (1.905 M) TYPICAL POST SPACING



SECTION B-B

**GENERAL NOTES**

ALL SLOPE RATIOS ARE EXPRESSED AS UNITS OF VERTICAL DISPLACEMENT TO UNITS OF HORIZONTAL DISPLACEMENT (V:H).

ALL DIMENSIONS ARE IN INCHES (MILLIMETERS) UNLESS OTHERWISE SHOWN.

THE EXISTING STEEL POSTS MAY BE DRILLED TO MATCH THE BOLT PATTERN SHOWN HEREIN FOR THE WOOD BLOCK-OUT, OR A NEW STEEL POST SHALL BE PROVIDED.

THIS DETAIL IS APPLICABLE TO THE GUARDRAIL SYSTEM USED PRIOR TO JANUARY 1, 2007. FOR DETAILS ON THE MIDWEST GUARDRAIL SYSTEM, SEE STANDARD 630001.

FILE NAME =	USER NAME = SEYMORECP	DESIGNED -	REVISED - 10-31-06
et:\pw\work\p\id\seymorecp\d0348982\Std.dgn		DRAWN -	REVISED -
Default	PLOT SCALE = 100.0000' / 1in.	CHECKED -	REVISED -
	PLOT DATE = 7/11/2013	DATE -	REVISED -

**STATE OF ILLINOIS  
DEPARTMENT OF TRANSPORTATION**

<b>REMOVE AND REERECT STEEL PLATE BEAM GUARDRAIL</b>			
SCALE: NONE	SHEET NO. 1 OF 4 SHEETS	STA.	TO STA.

F.A. RTE.	SECTION	COUNTY	TOTAL SHEETS	SHEET NO.
VARIES	2013-0411	VARIES	44	36
<b>BM-21</b>		CONTRACT NO. 60W86		
FED. ROAD DIST. NO. 1 ILLINOIS FED. AID PROJECT				