
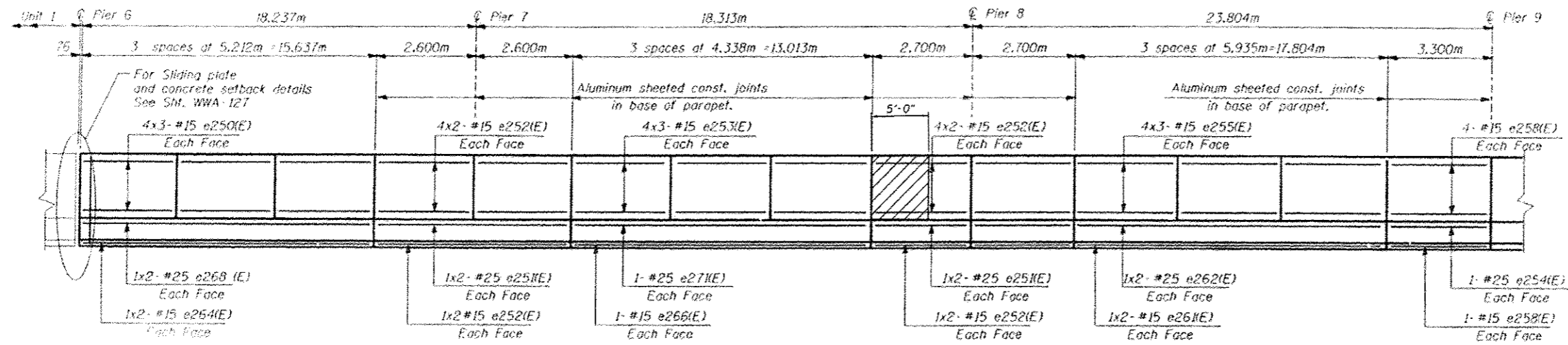


LEGEND

 HATCHED AREA INDICATES CONCRETE REMOVAL

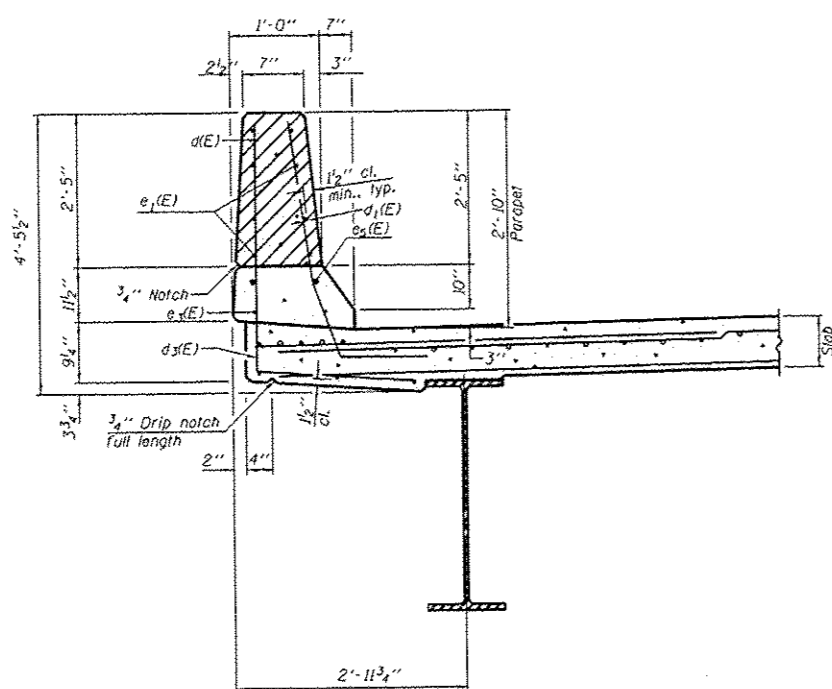


INSIDE ELEVATION OF PARAPET

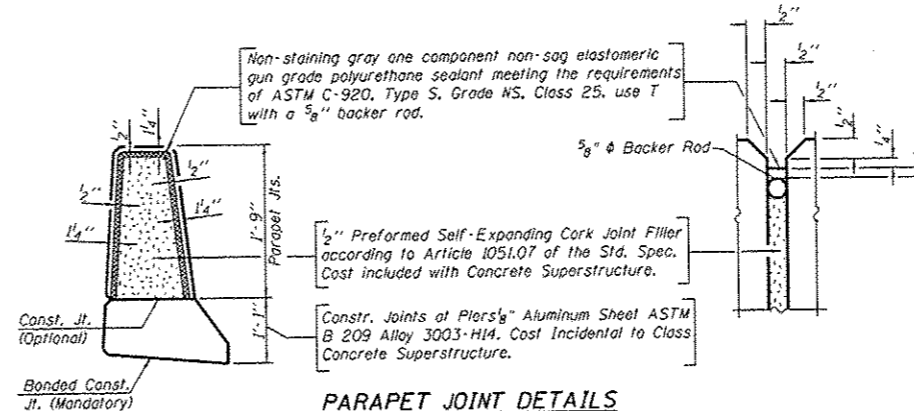
MINIMUM BAR LAP
(Parapet)

#4 bar = 2'-0"

ELEVATION



EXISTING SECTION THRU PARAPET



PARAPET JOINT DETAILS

SUPERSTRUCTURE BILL OF MATERIAL

Bar No.	Size	Length	Shape
e1(E)	#4	4'-10"	
REINFORCEMENT BARS, EPOXY COATED			
			Pound 26
CONCRETE SUPERSTRUCTURE			
			Cu. Yds. 0.7
CONCRETE REMOVAL			
			Cu. Yds. 0.4
SAW CUTS			
			Foot 10
PROTECTIVE COAT			
			Sq. Yds. 2.4

NOTE:
All edges shall have 3/4" chamfer.

PARAPET DETAILS
STRUCTURE NO. 016-1083

FILE NAME :	USER NAME :	DESIGNED :	REVISED :
ct:\pvc\work\pvc\dot\seymore\ep\08240902\08013-sh\alndgn	SEYMORECP	-	-
PLOT SCALE :	CHECKED :	DATE :	REVISED :
100.0000' / in.	-	-	-
PLOT DATE :	DATE :	REVISED :	-
7/23/2013	-	-	-

STATE OF ILLINOIS
DEPARTMENT OF TRANSPORTATION

LOCATION 6 (SN 016-1083), WB NORTH PARAPET
I-55 (STEVENSON EXPRESSWAY)

SCALE: SHEET 2 OF 2 SHEETS STA. TO STA.

F.A. RTE.	SECTION	COUNTY	TOTAL SHEETS	SHEET NO.
VAR.	2013-0411	VARIOUS	44	20
			CONTRACT NO. 60W86	
ILLINOIS FED. AID PROJECT				