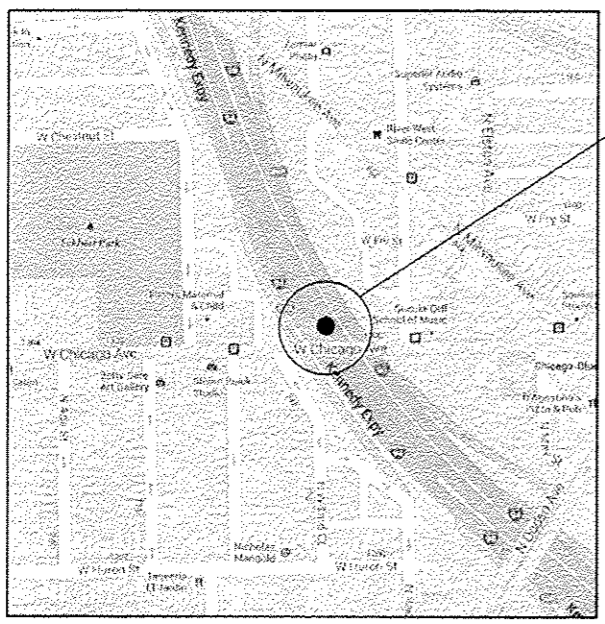




R14E

T39N



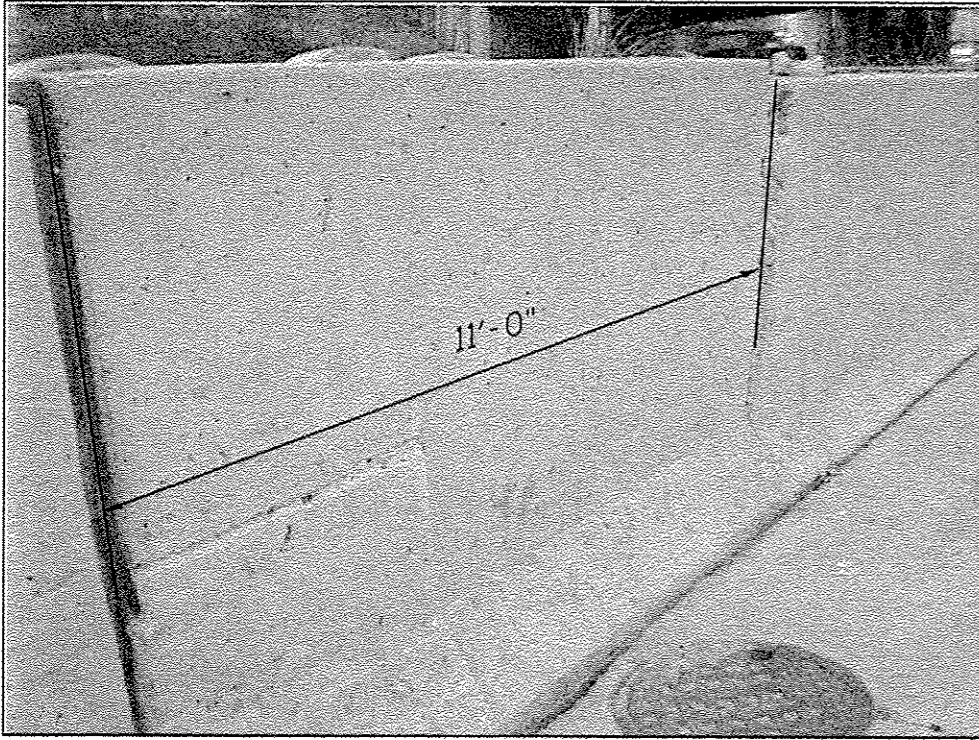
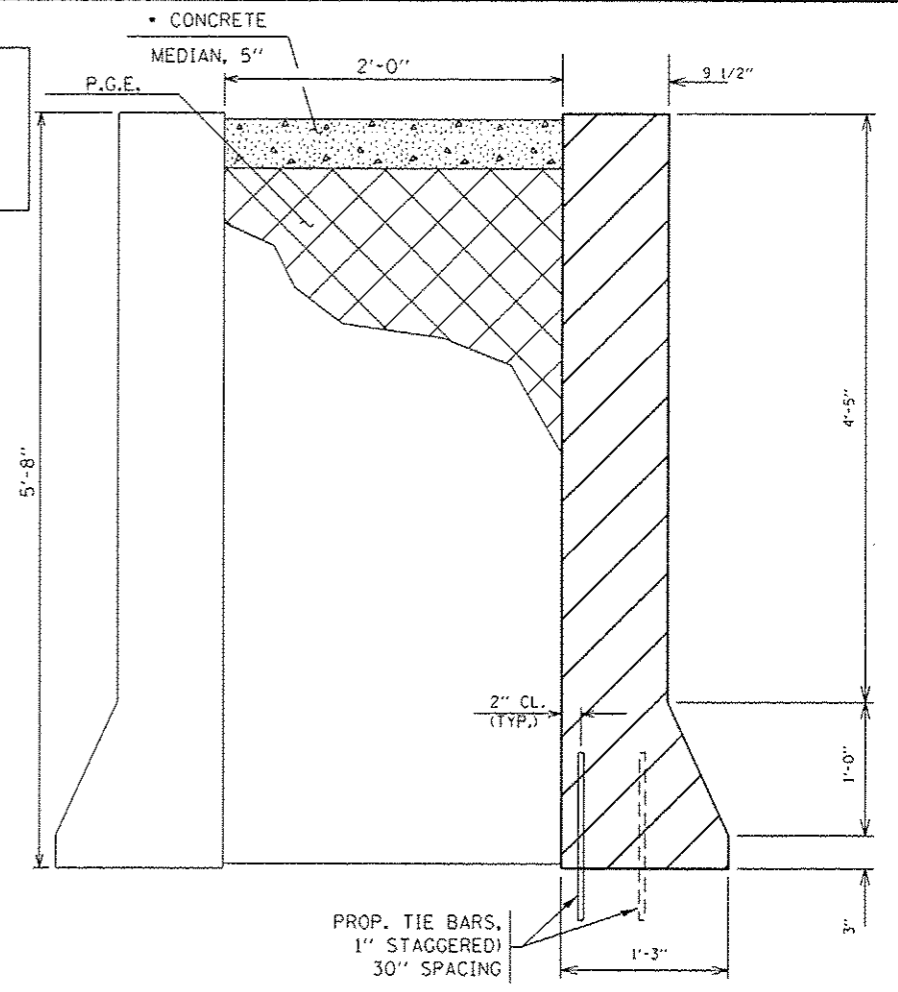
LOCATION 12: I-90/I-94 (KENNEDY EXPRESSWAY), SB
122' NORTH OF CHICAGO AVE. OVERPASS, LEFT SIDE

CITY OF CHICAGO
WEST CHICAGO TOWNSHIP
COOK COUNTY

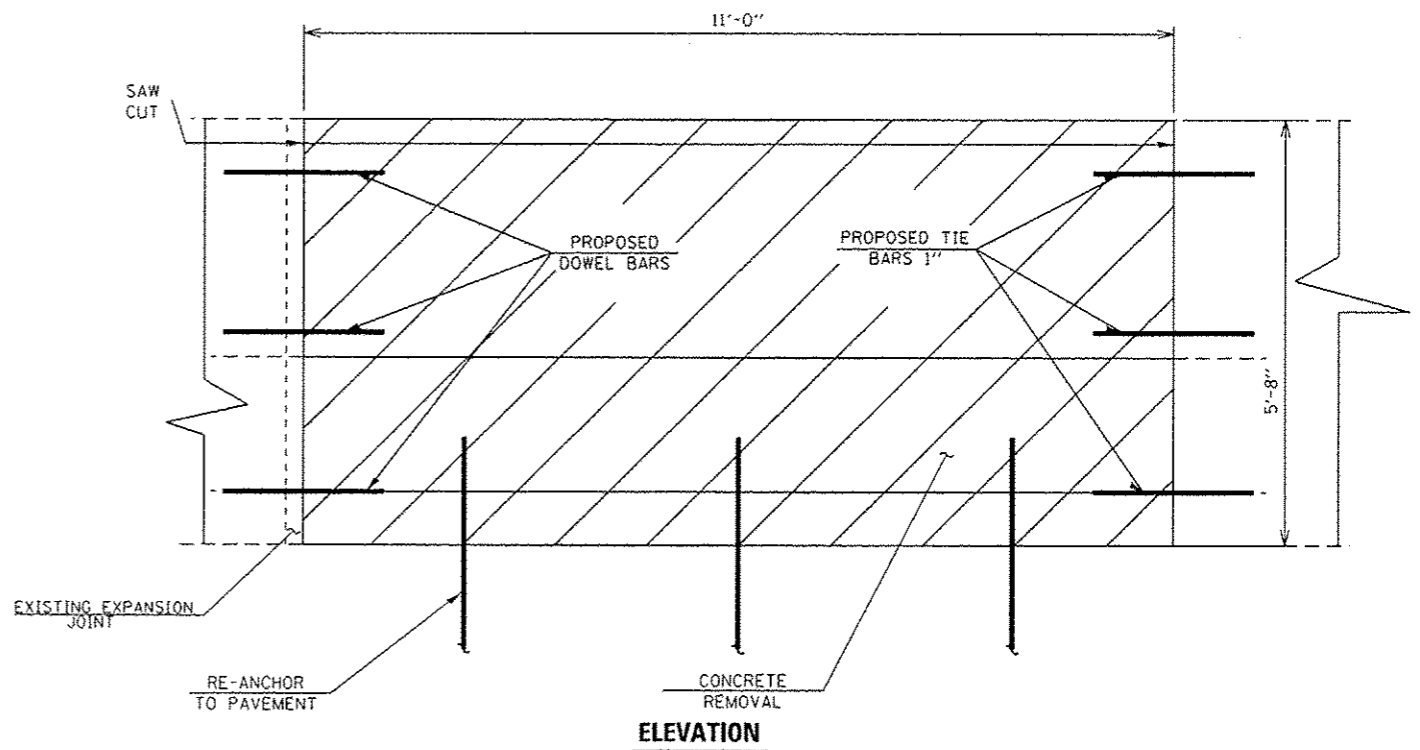
BILL OF MATERIAL

ITEM	UNIT	QUANTITY
CONCRETE REMOVAL	Cu. Yds.	2.0
CONCRETE STRUCTURE	Cu. Yds.	2.0
TIE BARS	Each	8
DOWEL BARS	Each	3
SAW CUTS	Foot	11
PROTECTIVE COAT	Sq. Yds.	10.5
POROUS GRANULAR EMBANKMENT	Cu. Yds.	2.0

* Cost of "Concrete Median, 5'" is included in "Concrete Structure"



FULL DEPTH REPAIR
REPLACE 11' OF BARRIER WALL
FOR MORE DETAILS, SEE SHEET #5



TRAFFIC DATA:

SPEED LIMIT: 55 MPH
2012 ADT: 287400

FILE NAME :	USER NAME : SEYHORECP	DESIGNED -	REVISED -
c:\pw_work\pavdot\seymorecp\d0348982\0158013-shl-plan.dgn		DRAWN -	REVISED -
Default	PLT SCALE * 1/80.0000' / in.	CHECKED -	REVISED -
	PLT DATE * 7/23/2013	DATE -	REVISED -

STATE OF ILLINOIS
DEPARTMENT OF TRANSPORTATION

LOCATION 12		F.A. RTE.	SECTION	COUNTY	TOTAL SHEETS	SHEET NO.
I-90/I-94 (KENNEDY EXPRESSWAY)		VAR.	2013-0411	VARIOUS	44	28
SCALE:	SHEET OF SHEETS	STA. TO STA.	CONTRACT NO. 60WB6			

[ILLINOIS] FED. AID PROJECT	
-----------------------------	--