

F.A.P. RTE.	SECTION	COUNTY	TOTAL SHEETS	SHEET NO.
306	106M-3	JoDAVISS	12	1
		ILLINOIS	CONTRACT NO. 64H82	

STATE OF ILLINOIS
DEPARTMENT OF TRANSPORTATION
DIVISION OF HIGHWAYS

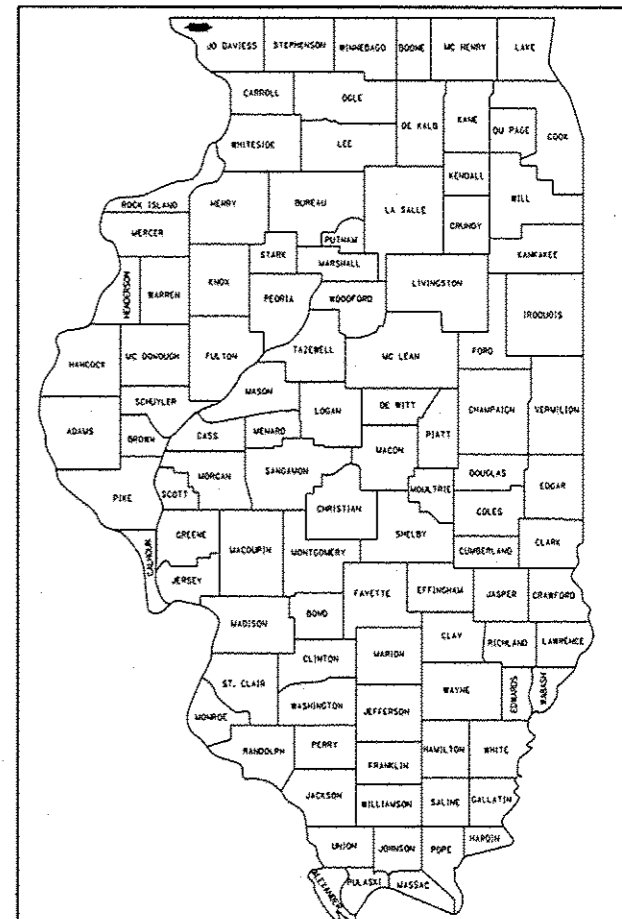
**PROPOSED
HIGHWAY PLANS**

FAP ROUTE 306 (IL 35)
SECTION 106M-3

**STORM SEWER REPLACEMENT
JoDAVISS COUNTY**

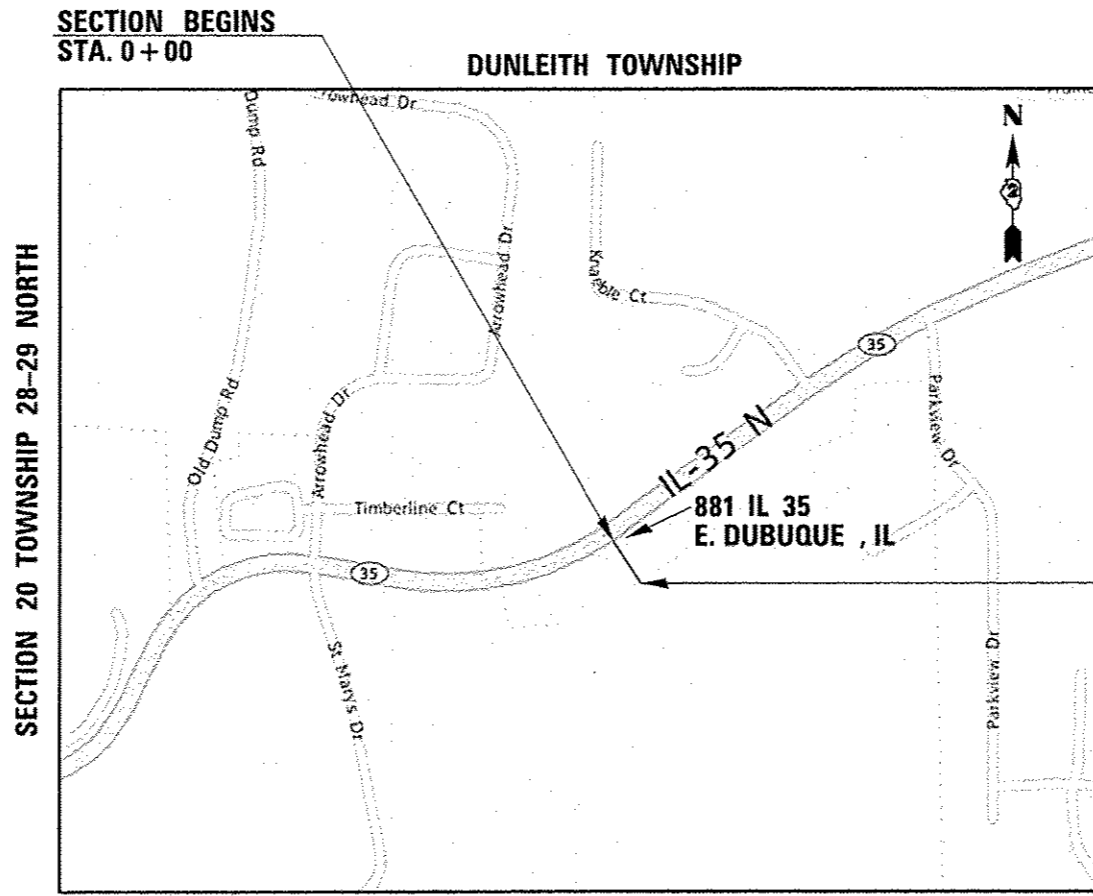
C-92-095-12

D92-057-12



LOCATION OF SECTION INDICATED THUS: - - -

FOR INDEX OF SHEETS, SEE SHEET NO. 2



SECTION 20 TOWNSHIP 28-29 NORTH

SECTION ENDS
STA. 2 + 50

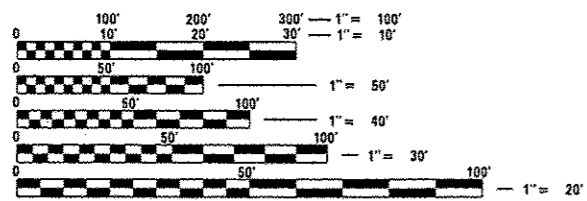
STATE OF ILLINOIS
DEPARTMENT OF TRANSPORTATION
DIVISION OF HIGHWAYS

SUBMITTED JUNE 21 20 13
Paul A. Rosta
DEPUTY DIRECTOR OF HIGHWAYS, REGION ENGINEER

Aug 16 20 13
John D. Baramelli, P.E.
ENGINEER OF DESIGN AND ENVIRONMENT

Aug 16 20 13
Orhan Osman, P.E.
DIRECTOR OF HIGHWAYS, CHIEF ENGINEER

DUNLEITH TOWNSHIP, SECTION 20



FULL SIZE PLANS HAVE BEEN PREPARED USING STANDARD ENGINEERING SCALES. REDUCED SIZED PLANS WILL NOT CONFORM TO STANDARD SCALES. IN MAKING MEASUREMENTS ON REDUCED PLANS, THE ABOVE SCALES MAY BE USED.

J.U.L.I.E.
JOINT UTILITY LOCATION INFORMATION FOR EXCAVATION
1-800-892-0123
OR 811

PROJECT ENGINEER: Masood Ahmad
PROJECT MANAGER: Sam Abdullah 1-815-284-5935

CONTRACT NO. 64H82

RANGE 2 WEST OF THE THIRD PRINCIPAL MERIDIAN

GROSS LENGTH = 250 FT.
NET LENGTH = 250 FT.

**PRINTED BY THE AUTHORITY
OF THE STATE OF ILLINOIS**