

09-20-13 LETTING ITEM 072

STATE OF ILLINOIS
DEPARTMENT OF TRANSPORTATION
DIVISION OF HIGHWAYS

**PROPOSED
HIGHWAY PLANS**

FAI ROUTE 94: INT 94/US 41
AT RUSSELL ROAD
SECTION: 49-1-A
EMBANKMENT CORRECTION
LAKE COUNTY
C-91-420-13

F.A.I. RTE.	SECTION	COUNTY	TOTAL SHEETS	SHEET NO.
94	49-1-A	LAKE	110	1
		ILLINOIS	CONTRACT NO. 60X05	

D-91-019-11

FOR INDEX OF SHEETS, SEE SHEET NO. 2

TRAFFIC DATA

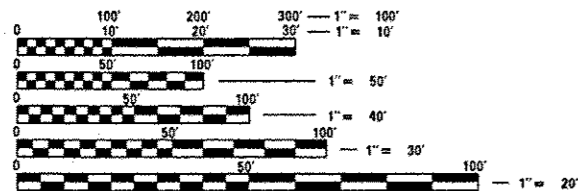
RUSSELL ROAD
EXISTING ADT: 3,900 (2011)
SPEED LIMIT: 45 MPH

I-94 SB EXIT RAMP
EXISTING ADT: 4,100 (2012)
SPEED LIMIT: 30 MPH

IMPROVEMENT LOCATED IN THE VILLAGE OF WADSWORTH

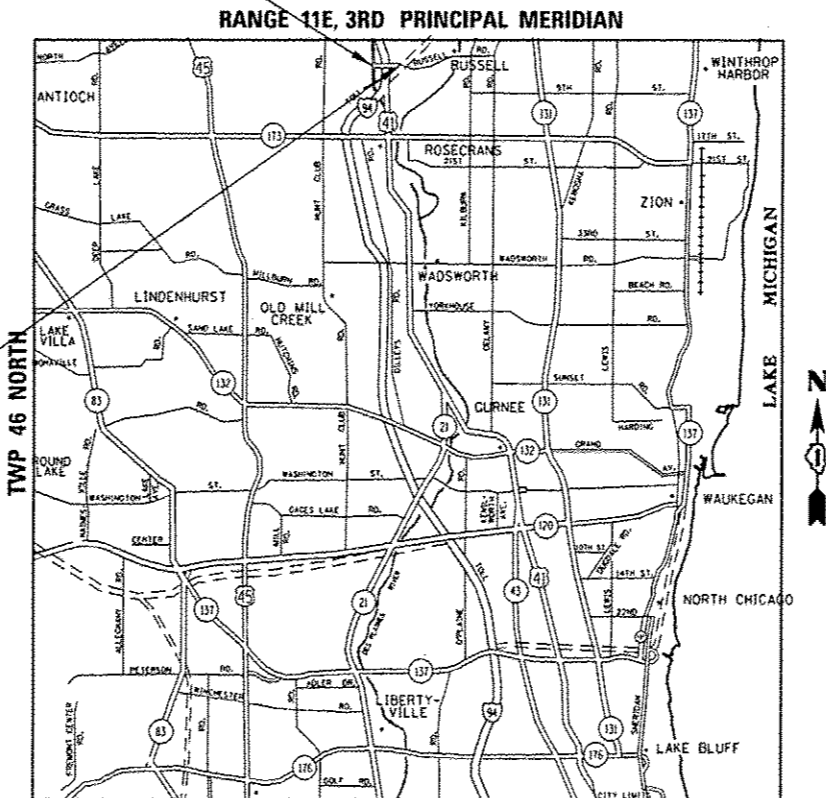
IMPROVEMENT BEGINS
STA. 3 + 87

IMPROVEMENT ENDS
STA. 26 + 39



FULL SIZE PLANS HAVE BEEN PREPARED USING STANDARD ENGINEERING SCALES. REDUCED SIZED PLANS WILL NOT CONFORM TO STANDARD SCALES. IN MAKING MEASUREMENTS ON REDUCED PLANS, THE ABOVE SCALES MAY BE USED.

J.U.L.I.E.
JOINT UTILITY LOCATION INFORMATION FOR EXCAVATION
1-800-892-0123
OR 811



GROSS LENGTH = 2252.00 FT. = 0.426 MILE
NET LENGTH = 1389.02 FT. = 0.263 MILE

STATE OF ILLINOIS
DEPARTMENT OF TRANSPORTATION
DIVISION OF HIGHWAYS

SUBMITTED July 17, 2013
[Signature]
DEPUTY DIRECTOR OF HIGHWAYS, REGION ENGINEER

Aug 16, 2013
[Signature]
ENGINEER OF DESIGN AND ENVIRONMENT

Aug 16, 2013
[Signature]
DIRECTOR OF HIGHWAYS, CHIEF ENGINEER

PRINTED BY THE AUTHORITY
OF THE STATE OF ILLINOIS

PROJECT ENGINEER: ALAIN MIDY (847) 221-3056
PROJECT MANAGER: ISSAM RAYYAN (847) 705-4178
CONTRACT NO. 60X05

INDEX OF SHEETS

1. COVER SHEET
2. INDEX OF SHEETS, GENERAL NOTES
3. SUMMARY OF QUANTITIES
4. EROSION CONTROL
6. LANDSCAPING PLAN
8. BENCHING DETAIL FOR EMBANKMENT WIDENING (BD-51)
9. TRAFFIC CONTROL DETAILS FOR FREEWAY SHOULDER CLOSURES AND PARTIAL RAMP CLOSURES (TC-17)
10. ARTERIAL ROAD INFORMATION SIGN (TC-22)
11. CROSS SECTION SHEET

HIGHWAY STANDARDS

- 280001-07 TEMPORARY EROSION CONTROL SYSTEMS
- 701001-02 OFF-RD OPERATIONS, 2L, 2W, MORE THAN 15' AWAY
- 701006-04 OFF-RD OPERATIONS, 2L, 2W, 15' TO 24' FROM PAVEMENT EDGE
- 701301-04 LANE CLOSURE, 2L, 2W SHORT TIME OPERATIONS
- 701502-05 URBAN LANE CLOSURE, 2L, 2W, WITH BIDIRECTIONAL LEFT TURN LANE
- 701901-02 TRAFFIC CONTROL DEVICES

GENERAL NOTES

1. BEFORE STARTING ANY EXCAVATION, THE CONTRACTOR SHALL CALL "J.U.L.I.E." AT (800) 892-0123 OR 811 FOR FIELD LOCATIONS OF BURIED ELECTRIC, TELEPHONE AND GAS UTILITIES. 48 HOUR NOTIFICATION IS REQUIRED.
2. THE CONTRACTOR SHALL COORDINATE CONSTRUCTION ACTIVITIES WITH UTILITY COMPANIES, AND THE VILLAGE OF WADSWORTH.
3. THE CONTRACTOR WILL NOT BE ALLOWED TO SET UP A YARD OR FIELD OFFICE ON STATE (OR TOLLWAY) PROPERTY WITHOUT WRITTEN PERMISSION FROM THE DEPARTMENT (OR ISTHA).
4. IT SHALL BE THE CONTRACTOR'S RESPONSIBILITY TO VERIFY ALL DIMENSIONS AND CONDITIONS EXISTING IN THE FIELD PRIOR TO CONSTRUCTION AND ORDERING OF MATERIALS.
5. THE CONTRACTOR SHALL TAKE ALL NECESSARY SAFETY PRECAUTIONS TO PROTECT AND PROVIDE ACCESS TO ADJUTING PROPERTY, UTILITIES, PEDESTRIANS, AND VEHICULAR TRAFFIC.
6. THE CONTRACTOR SHALL CONTACT THE DISTRICT ONE TRAFFIC CONTROL SUPERVISOR AT (847)705-4470, AND THE EXPRESSWAY TRAFFIC CONTROL SUPERVISOR AT (847)705-4151 A MINIMUM OF 72 HOURS IN ADVANCE OF BEGINNING WORK.
7. IT SHALL BE THE CONTRACTOR'S RESPONSIBILITY TO VERIFY THE LOCATION OF ALL ISTHA FIBER UTILITIES PRIOR TO STARTING CONSTRUCTION. THE CONTRACTOR SHALL INITIATE THE LOCATION PROCESS FOR THE FIBER OPTIC CABLE BY COMPLETING A "REQUEST TOLLWAY UTILITIES LOCATE" FORM FILLED IN ONLINE AT THE TOLLWAY WEBSITE UNDER "DOING BUSINESS" AT LEAST FOUR BUSINESS DAYS PRIOR TO STARTING ANY UNDERGROUND OPERATIONS WITHIN 200' OF I-94.
8. WHERE SECTION OR SUB-SECTION MONUMENTS ARE ENCOUNTERED, THE ENGINEER SHALL BE NOTIFIED BEFORE SUCH MONUMENTS ARE REMOVED. THE CONTRACTOR SHALL PROTECT AND CAREFULLY PRESERVE ALL PROPERTY MARKERS AND MONUMENTS UNTIL THE OWNER, AN AUTHORIZED SURVEYOR OR AGENT HAS WITNESSED THEIR LOCATION.
9. THESE PLANS HAVE BEEN PREPARED FROM NOTES RECEIVED FROM THE BUREAU OF CONSTRUCTION.
10. DO NOT SCALE PLANS FOR CONSTRUCTION DIMENSIONS.
11. VILLAGE WATER AND SEWER MAINS MAY BE LOCATED IN THE LANDSCAPE AREA.
12. THE ACTUAL LOCATION OF PROPOSED LANDSCAPING WILL BE ADJUSTED IN THE FIELD TO AVOID UTILITIES.
13. UNDERBRUSH OR DEBRIS AT WORKZONE LOCATIONS SHALL BE REMOVED AND DISPOSED OF ACCORDING TO SECTION 201 OF THE STANDARD SPECIFICATIONS. THIS WORK WILL NOT BE PAID FOR SEPARATELY, BUT THE COSTS SHALL BE CONSIDERED AS INCLUDED IN THE CONTRACT UNIT PRICES FOR THE CONSTRUCTION ITEMS INVOLVED, AND NO ADDITIONAL COMPENSATION WILL BE ALLOWED.
14. THE CONTRACTOR SHALL TAKE ALL NECESSARY PRECAUTIONS FOR THE PROTECTION OF EXISTING PLANT MATERIAL FOR WHICH THE CONTRACT DOES NOT PROVIDE REMOVAL. THE PROTECTION OF EXISTING PLANT MATERIAL AND THE REPAIR OR REPLACEMENT OF EXISTING PLANT MATERIAL DAMAGED BY THE CONTRACTOR SHALL BE DONE IN ACCORDANCE WITH THE REQUIREMENTS OF SECTION 201 OF THE STANDARD SPECIFICATIONS.
15. THIS PROJECT WILL REQUIRE A PERMIT IN ACCORDANCE WITH GENERAL NPDES PERMIT NO. ILR10 BY THE ILLINOIS ENVIRONMENTAL PROTECTION AGENCY. SEE CONTRACT SPECIFICATIONS FOR SPECIFIC REQUIREMENTS.

THE GENERAL CONTRACTOR IS REQUIRED TO HIRE AN ENVIROMENTAL FIRM WITH AT LEAST FIVE (5) DOCUMENTED LEAKING UNDERGROUND STORAGE TANK CLEANUPS OR THAT IS PRE-QUALIFIED IN HAZARDOUS WASTE BY THE DEPARTMENT TO REMEDIATE THE SOIL CONTAMINATION AND MONITOR FOR WORKER PROTECTION.

OFFSITE BORROW, WASTE, USE AREAS: PRIOR TO WORKING IN AREAS APPROVED FOR BWU BY THE BDE 2290 PROCEDURES, THE CONTRACTOR WILL NEED TO SUBMIT A BWU SITE WORK PLAN TO THE DEPARTMENT FOR APPROVAL. GUIDELINES ON ACCEPTABLE BWU SITE WORK TECHNIQUES CAN BE FOUND IN SECTION II.5 a. and b. OF THE SWPPP. THE COST OF ALL MATERIALS AND LABOR NECESSARY TO COMPLY WITH THE ABOVE PROVISIONS TO PREPARE AND IMPLEMENT A BWU SITE WORK PLAN WILL NOT BE PAID FOR SEPERATELY, BUT SHALL BE CONSIDERED AS INCLUDED IN THE UNIT BID PRICES OF THE CONTRACT AND NO ADDITIONAL COMPENSATION WILL BE ALLOWED.

FILE NAME *	USER NAME * MaldonadoHM	DESIGNED -	REVISED -	STATE OF ILLINOIS DEPARTMENT OF TRANSPORTATION	F.A.I. DATE	SECTION	COUNTY	TOTAL SHEETS	SHEET NO.
c:\pwwork\pwwork\maldonadohm\d0350654	940Russell-ht-cover.dgn	DRAWN -	REVISED -		94	49-1-A	LAKE	16	2
Default	PLOT SCALE * 1/8"=1'-0"	CHECKED -	REVISED -		CONTRACT NO. 60X05				
	PLOT DATE * 7/11/13	DATE -	REVISED -		SCALE:	SHEET	OF	SHEETS	STA.

ILLINOIS FED. AID PROJECT

SUMMARY OF QUANTITIES				CONSTRUCTION TYPE CODE					SUMMARY OF QUANTITIES				CONSTRUCTION TYPE CODE					
CODE NO	ITEM	UNIT	100% STATE TOTAL QUANTITIES	0021					CODE NO	ITEM	UNIT	100% STATE TOTAL QUANTITIES	0021	0021				
20200100	EARTH EXCAVATION	CU YD	2397	2397					70102622	TRAFFIC CONTROL AND PROTECTION, STANDARD 701502	L SUM	1	1					
21101505	TOPSOIL EXCAVATION AND PLACEMENT	CU YD	1964	1964					X7011015	TRAFFIC CONTROL AND PROTECTION (EXPRESSWAYS)	L SUM	1	1					
25000210	SEEDING, CLASS 2A	ACRE	0.12	0.12					Z0030850	TEMPORARY INFORMATION SIGNING	SO FT	51.4	51.4					
25000310	SEEDING, CLASS 4	ACRE	1.87	1.87					*66900200	NON-SPECIAL WASTE DISPOSAL	CU YD	1000	1000					
25000400	NITROGEN FERTILIZER NUTRIENT	POUND	200	200					*66900450	SPECIAL WASTE PLANS AND REPORTS	L SUM	1	1					
25000600	POTASSIUM FERTILIZER NUTRIENT	POUND	200	200					*66900530	SOIL DISPOSAL ANALYSIS	EACH	1	1					
25100105	MULCH, METHOD 1	ACRE	1.99	1.99														
25100630	EROSION CONTROL BLANKET	SO YD	9618	9618														
25200110	SODDING, SALT TOLERANT	SO YD	1158	1158														
25200200	SUPPLEMENTAL WATERING	UNIT	12	12														
28000250	TEMPORARY EROSION CONTROL SEEDING	POUND	223	223														
28000305	TEMPORARY DITCH CHECKS	FOOT	50	50														
28000400	PERIMETER EROSION BARRIER	FOOT	1422	1422														
28001100	TEMPORARY EROSION CONTROL BLANKET	SO YD	9618	9618														
63200310	GUARDRAIL REMOVAL	FOOT	756	756														
67100100	MOBILIZATION	L SUM	1	1														

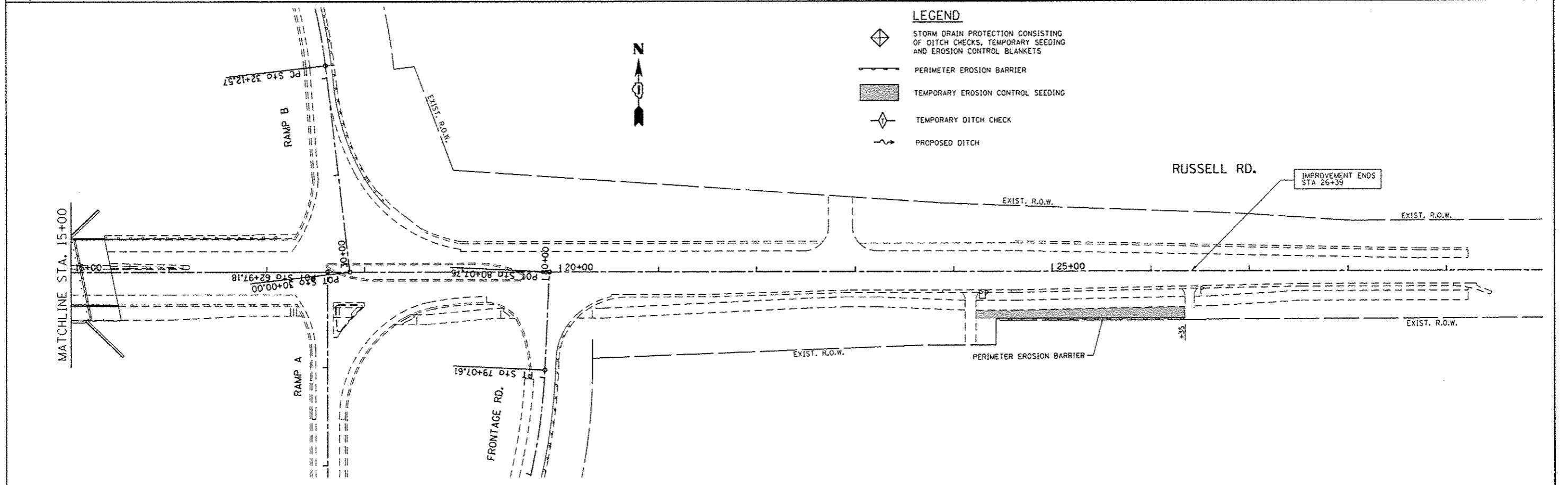
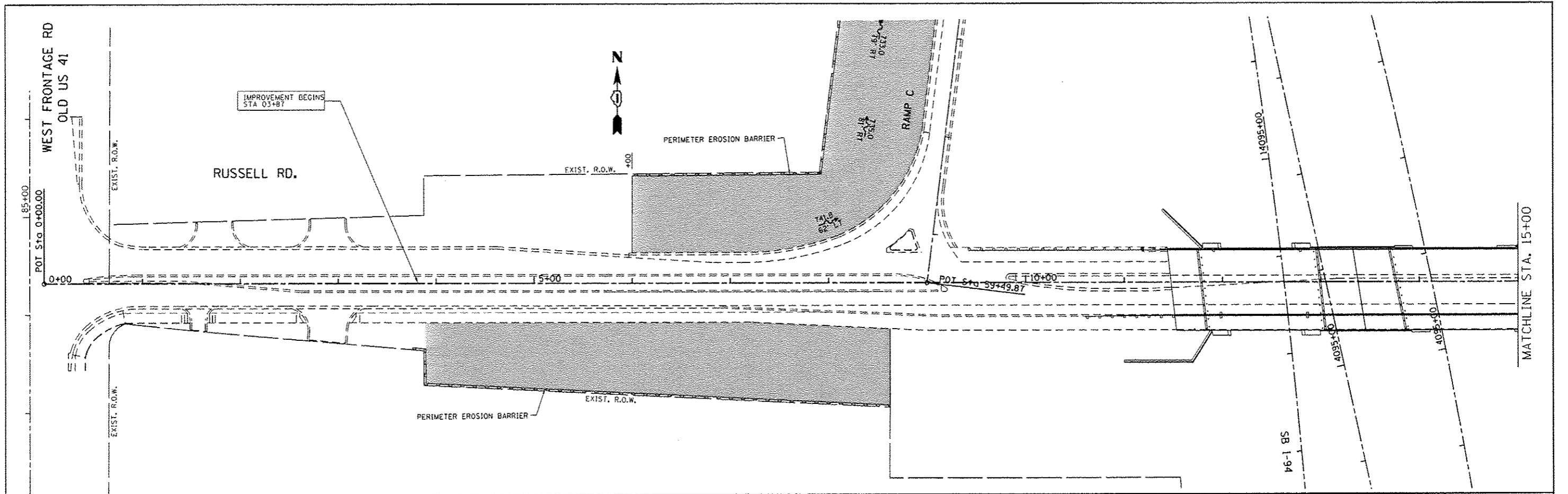
FILE NAME *	USER NAME * Maldonado	DESIGNED -	REVISED -
DRAWN * [unclear]	DATE	CHECKED -	REVISED -
PLOT SCALE * 100,000' = 1"	DATE	CHECKED -	REVISED -
PLOT DATE * 8/6/2003		CHECKED -	REVISED -

STATE OF ILLINOIS
DEPARTMENT OF TRANSPORTATION






SUMMARY OF QUANTITIES			
SCALE:	SHEET NO.	OF SHEETS	STA. TO STA.

F.A.I. RTE.	SECTION	COUNTY	TOTAL SHEETS	SHEET NO.
94	49-1-A	LAKE	16	3
CONTRACT NO. 60X05				
FED. ROAD DIST. NO. 1 ILLINOIS FED. AID PROJECT				

Rev.



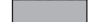




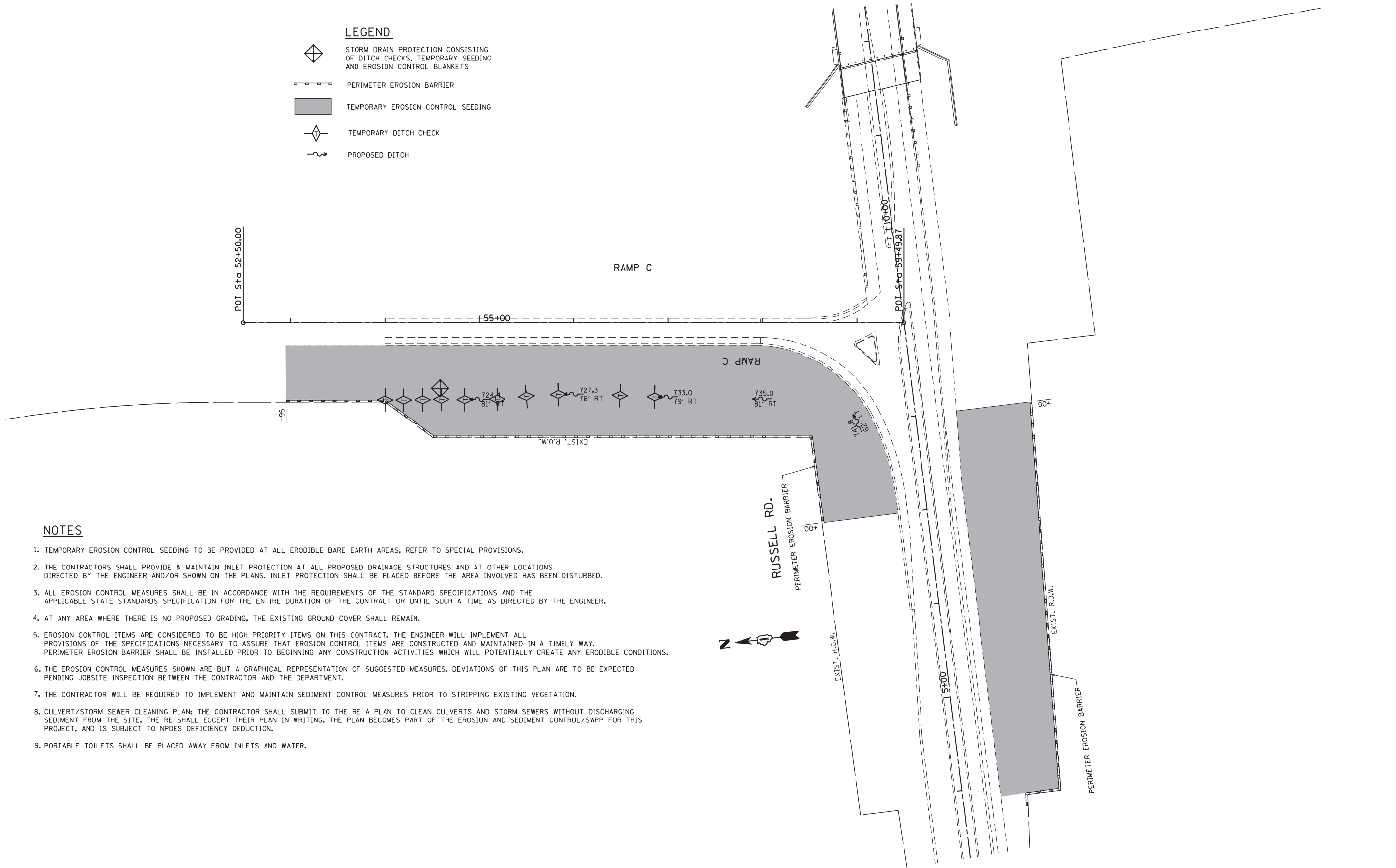
LEGEND

-  STORM DRAIN PROTECTION CONSISTING OF DITCH CHECKS, TEMPORARY SEEDING AND EROSION CONTROL BLANKETS
-  PERIMETER EROSION BARRIER
-  TEMPORARY EROSION CONTROL SEEDING
-  TEMPORARY DITCH CHECK
-  PROPOSED DITCH

FILE NAME c:\pwwork\pwwork\maldonado\maldonado\0358054\1-94Russell-shr-cover.dgn	USER NAME MaldonadoHM	DESIGNED -	REVISED -	STATE OF ILLINOIS DEPARTMENT OF TRANSPORTATION	EROSION CONTROL /DRAINAGE PLAN I-94 AT RUSSELL ROAD			F.A.I. RTE. 94	SECTION 49-1-A	COUNTY LAKE	TOTAL SHEETS 16	SHEET NO. 4
	PLOT SCALE 1/8" = 1'-0"	CHECKED -	REVISED -					SCALE: 1"=50'	SHEET	OF	SHEETS	STA.
Default	PLOT DATE 8/15/2013	DATE -	REVISED -	ILLINOIS FED. AID PROJECT								

LEGEND

-  STORM DRAIN PROTECTION CONSISTING OF DITCH CHECKS, TEMPORARY SEEDING AND EROSION CONTROL BLANKETS
-  PERIMETER EROSION BARRIER
-  TEMPORARY EROSION CONTROL SEEDING
-  TEMPORARY DITCH CHECK
-  PROPOSED DITCH



NOTES

1. TEMPORARY EROSION CONTROL SEEDING TO BE PROVIDED AT ALL ERODIBLE BARE EARTH AREAS, REFER TO SPECIAL PROVISIONS.
2. THE CONTRACTORS SHALL PROVIDE & MAINTAIN INLET PROTECTION AT ALL PROPOSED DRAINAGE STRUCTURES AND AT OTHER LOCATIONS DIRECTED BY THE ENGINEER AND/OR SHOWN ON THE PLANS. INLET PROTECTION SHALL BE PLACED BEFORE THE AREA INVOLVED HAS BEEN DISTURBED.
3. ALL EROSION CONTROL MEASURES SHALL BE IN ACCORDANCE WITH THE REQUIREMENTS OF THE STANDARD SPECIFICATIONS AND THE APPLICABLE STATE STANDARDS SPECIFICATION FOR THE ENTIRE DURATION OF THE CONTRACT OR UNTIL SUCH A TIME AS DIRECTED BY THE ENGINEER.
4. AT ANY AREA WHERE THERE IS NO PROPOSED GRADING, THE EXISTING GROUND COVER SHALL REMAIN.
5. EROSION CONTROL ITEMS ARE CONSIDERED TO BE HIGH PRIORITY ITEMS ON THIS CONTRACT. THE ENGINEER WILL IMPLEMENT ALL PROVISIONS OF THE SPECIFICATIONS NECESSARY TO ASSURE THAT EROSION CONTROL ITEMS ARE CONSTRUCTED AND MAINTAINED IN A TIMELY WAY. PERIMETER EROSION BARRIER SHALL BE INSTALLED PRIOR TO BEGINNING ANY CONSTRUCTION ACTIVITIES WHICH WILL POTENTIALLY CREATE ANY ERODIBLE CONDITIONS.
6. THE EROSION CONTROL MEASURES SHOWN ARE BUT A GRAPHICAL REPRESENTATION OF SUGGESTED MEASURES, DEVIATIONS OF THIS PLAN ARE TO BE EXPECTED PENDING JOBSITE INSPECTION BETWEEN THE CONTRACTOR AND THE DEPARTMENT.
7. THE CONTRACTOR WILL BE REQUIRED TO IMPLEMENT AND MAINTAIN SEDIMENT CONTROL MEASURES PRIOR TO STRIPPING EXISTING VEGETATION.
8. CULVERT/STORM SEWER CLEANING PLAN: THE CONTRACTOR SHALL SUBMIT TO THE RE A PLAN TO CLEAN CULVERTS AND STORM SEWERS WITHOUT DISCHARGING SEDIMENT FROM THE SITE. THE RE SHALL EXCEPT THEIR PLAN IN WRITING. THE PLAN BECOMES PART OF THE EROSION AND SEDIMENT CONTROL/SWPP FOR THIS PROJECT, AND IS SUBJECT TO NPDES DEFICIENCY DEDUCTION.
9. PORTABLE TOILETS SHALL BE PLACED AWAY FROM INLETS AND WATER.

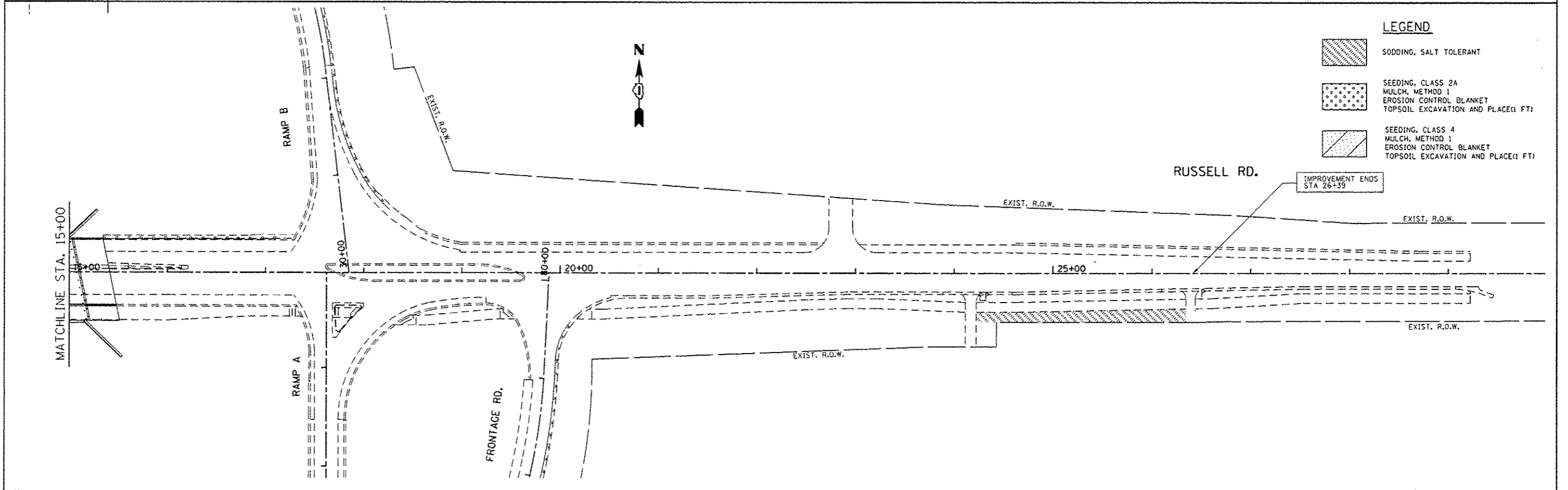
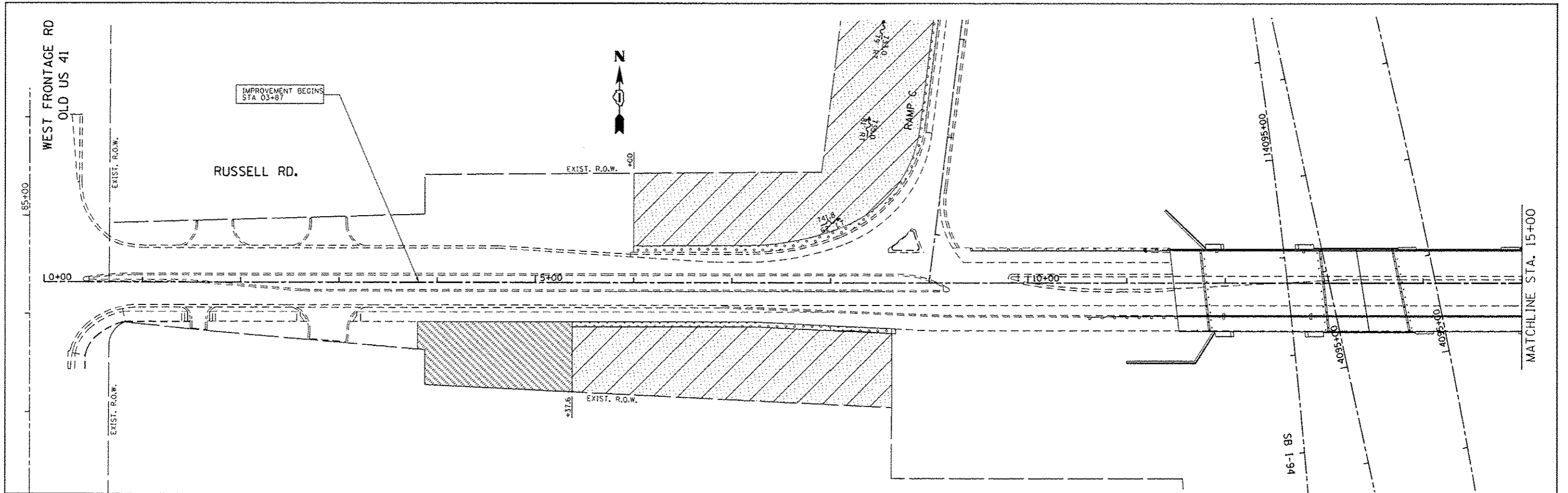
FILE NAME =	USER NAME = MaldonadoHM	DESIGNED -	REVISED -
et:\pw\work\p\dot\maldonadohm\d0350654\I-94@Russell-sht-cover.dgn	I-94@Russell-sht-cover.dgn	DRAWN -	REVISED -
Default	PLOT SCALE = 100.0000' / in.	CHECKED -	REVISED -
	PLOT DATE = 8/6/2013	DATE -	REVISED -




**STATE OF ILLINOIS
DEPARTMENT OF TRANSPORTATION**

**EROSION CONTROL /DRAINAGE PLAN
I-94 AT RUSSELL ROAD - RAMP C**

SCALE: 1"=50' SHEET OF SHEETS STA. TO STA.

F.A.I. RTE.	SECTION	COUNTY	TOTAL SHEETS	SHEET NO.
94	49-1-A	LAKE	16	5
CONTRACT NO. 60X05				
ILLINOIS FED. AID PROJECT				



- LEGEND**
-  SODDING, SALT TOLERANT
 -  SEEDING, CLASS 2A
MULCH, METHOD 1
EROSION CONTROL BLANKET
TOPSOIL EXCAVATION AND PLACE(1 FT)
 -  SEEDING, CLASS 4
MULCH, METHOD 1
EROSION CONTROL BLANKET
TOPSOIL EXCAVATION AND PLACE(1 FT)

FILE NAME *	USER NAME * MaldonadoH	DESIGNED -	REVISED -	STATE OF ILLINOIS DEPARTMENT OF TRANSPORTATION	LANDSCAPING PLAN I-94 AT RUSSELL ROAD			F.A.I. R.I.E.	SECTION	COUNTY	TOTAL SHEETS	SHEET NO.	
c:\pwork\pwork\maldonadoh\0330654	0-940Russell-shr-cover.dgn	DRAWN -	REVISED -					94	49-1-A	LAKE	16	6	
Default	PLOT SCALE * 1/80.0000 / in.	CHECKED -	REVISED -		SCALE: 1"=50'			SHEET OF SHEETS		STA. TO STA.		CONTRACT NO. 60X05	
	PLOT DATE * 8/15/2013	DATE -	REVISED -		ILLINOIS FED. AID PROJECT								

F.A.P. RTE.	SECTION	COUNTY	TOTAL SHEETS	SHEET NO.
306	106M-3	JoDAVISS	12	1
		ILLINOIS	CONTRACT NO. 64H82	

STATE OF ILLINOIS
DEPARTMENT OF TRANSPORTATION
DIVISION OF HIGHWAYS

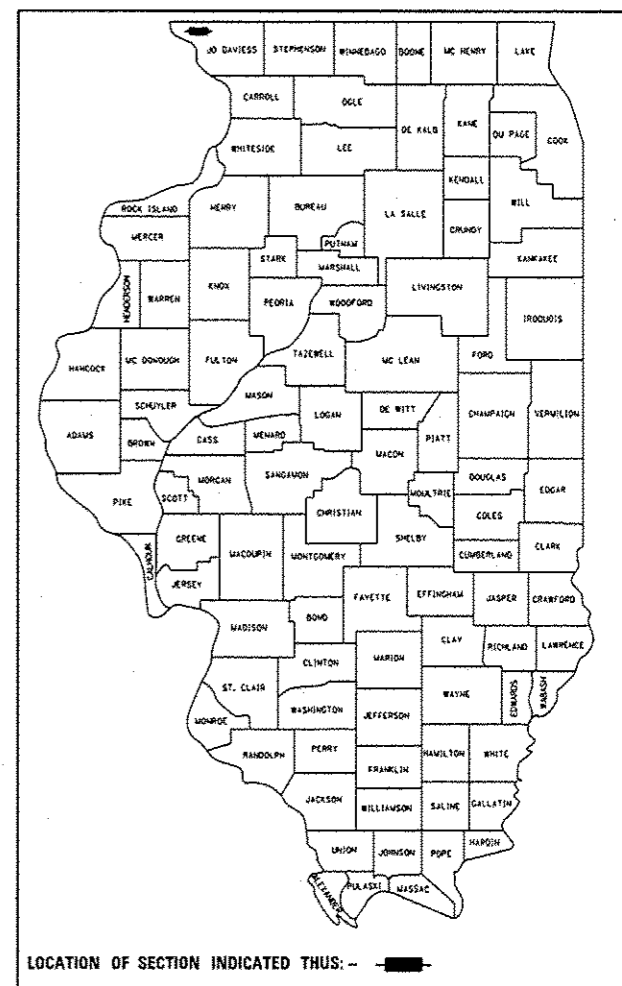
**PROPOSED
HIGHWAY PLANS**

FAP ROUTE 306 (IL 35)
SECTION 106M-3

**STORM SEWER REPLACEMENT
JoDAVISS COUNTY**

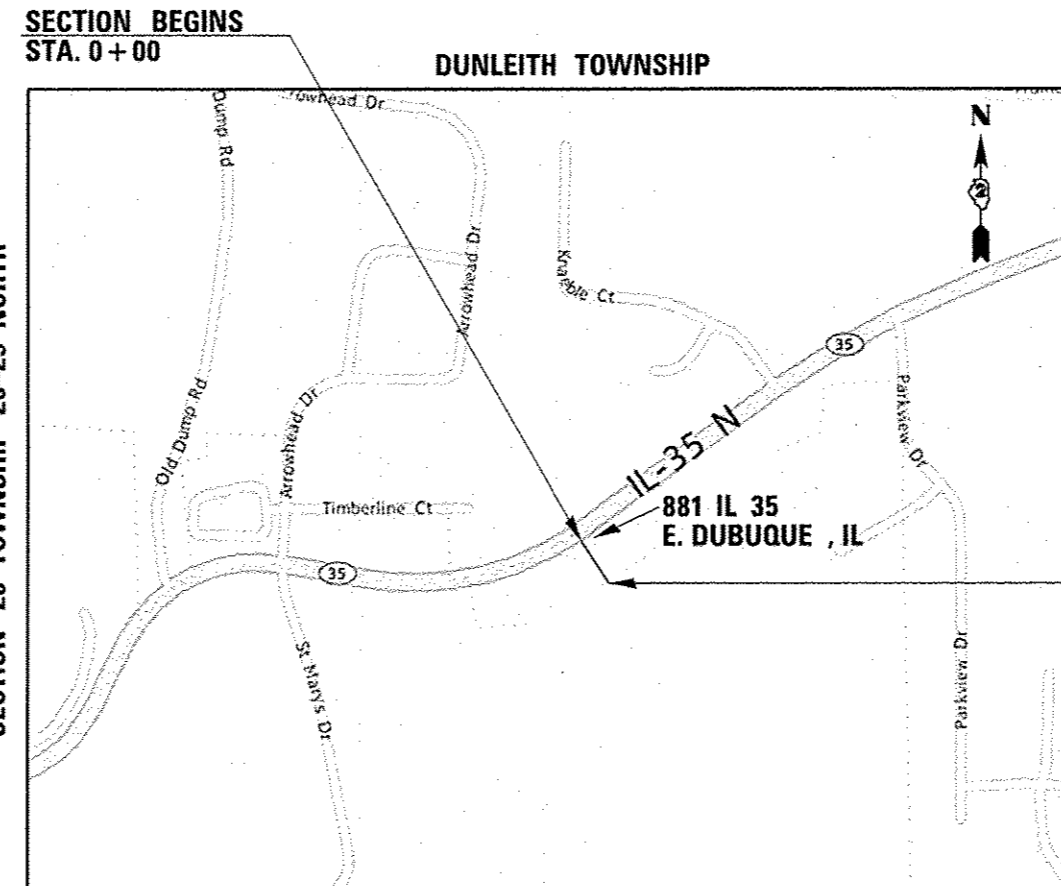
C-92-095-12

D92-057-12



LOCATION OF SECTION INDICATED THUS: - - -

FOR INDEX OF SHEETS, SEE SHEET NO. 2



SECTION 20 TOWNSHIP 28-29 NORTH

SECTION ENDS
STA. 2 + 50

STATE OF ILLINOIS
DEPARTMENT OF TRANSPORTATION
DIVISION OF HIGHWAYS

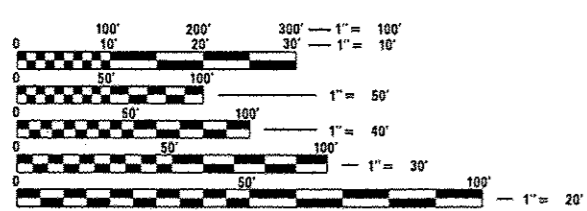
SUBMITTED JUNE 21 2013
Paul A. Rosta
DEPUTY DIRECTOR OF HIGHWAYS, REGION ENGINEER

Aug 16 2013
John D. Baramelli, P.E.
acting ENGINEER OF DESIGN AND ENVIRONMENT

Aug 16 2013
Orhan Osman, P.E.
DIRECTOR OF HIGHWAYS, CHIEF ENGINEER

**PRINTED BY THE AUTHORITY
OF THE STATE OF ILLINOIS**

DUNLEITH TOWNSHIP, SECTION 20



FULL SIZE PLANS HAVE BEEN PREPARED USING STANDARD ENGINEERING SCALES. REDUCED SIZED PLANS WILL NOT CONFORM TO STANDARD SCALES. IN MAKING MEASUREMENTS ON REDUCED PLANS, THE ABOVE SCALES MAY BE USED.

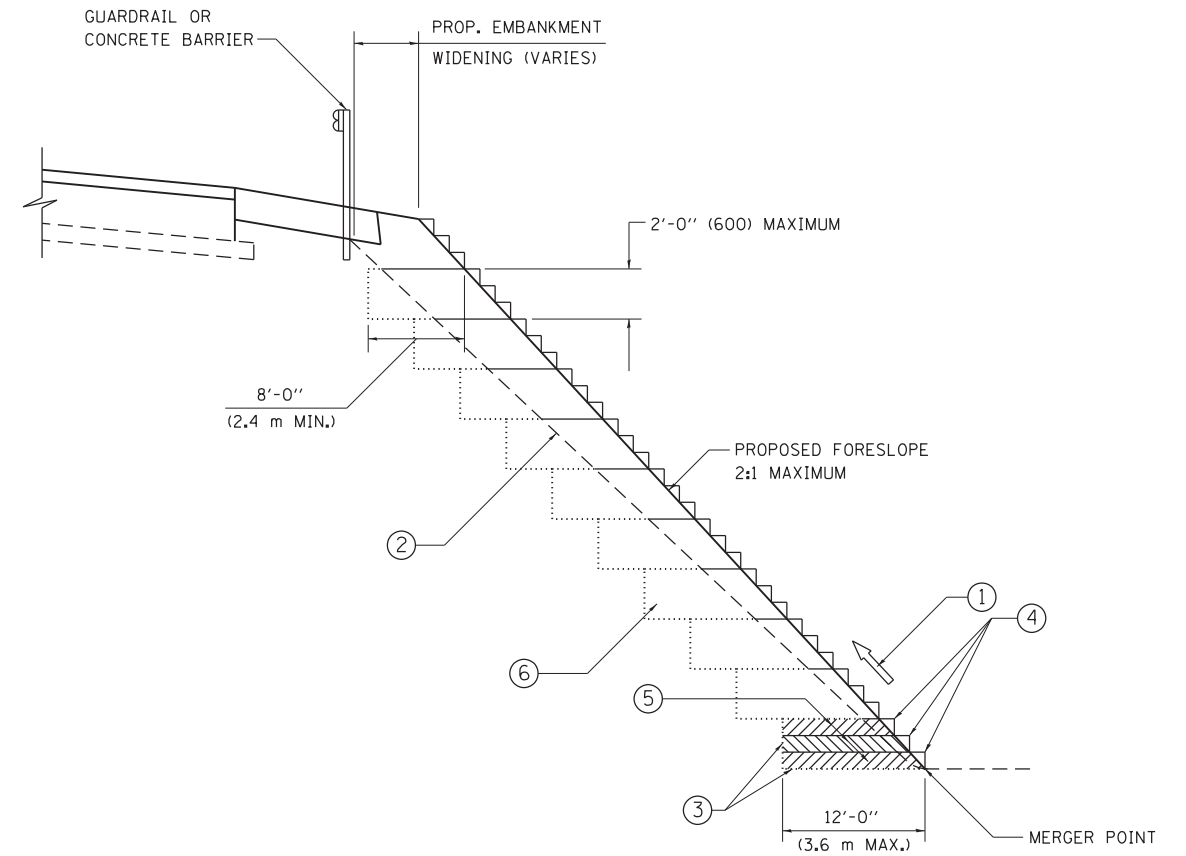
J.U.L.I.E.
JOINT UTILITY LOCATION INFORMATION FOR EXCAVATION
1-800-892-0123
OR 811

PROJECT ENGINEER: Masood Ahmad
PROJECT MANAGER: Sam Abdullah 1-815-284-5935

CONTRACT NO. 64H82

GROSS LENGTH = 250 FT.
NET LENGTH = 250 FT.

RANGE 2 WEST OF THE THIRD PRINCIPAL MERIDIAN



**TYPICAL BENCHING DETAIL
FOR EMBANKMENT**

NOTES:

- ① CONSTRUCT SUCCEEDING BENCH CUTS AND EMBANKMENT PLACEMENT AND COMPACTION FROM BOTTOM TO TOP IN STAIRSTEP FASHION.
- ② EXISTING FORESLOPE PREPARED IN ACCORDANCE WITH ARTICLE 205.03 OF THE STANDARD SPECIFICATIONS.
- ③ BENCH CUT EXISTING SLOPE TYPICAL FOR EACH STEP.
- ④ TRIM TO FINAL SLOPE.
- ⑤ EQUAL 8-INCH (200) LIFTS OF EMBANKMENT COMPACTED IN ACCORDANCE WITH ARTICLE 205.05 OF THE STANDARD SPECIFICATIONS.
- ⑥ EXCAVATION OF BENCH CUTS WITHIN EXISTING EMBANKMENT WILL BE PAID FOR AT THE CONTRACT UNIT PRICE PER CUBIC METER OR CUBIC YARD FOR "EARTH EXCAVATION". THIS PRICE WILL INCLUDE ALL LABOR AND MATERIAL, NO ADDITIONAL COMPENSATION WILL BE ALLOWED.
- ⑦ SLOPES SHALL BE BENCHED ACCORDING TO THIS DETAIL WHEN THE SLOPE IS STEEPER THAN 4:1 AND THE HEIGHT IS GREATER THAN 5' (1.5 m).

ALL DIMENSIONS ARE IN INCHES (MILLIMETERS)
UNLESS OTHERWISE SHOWN.

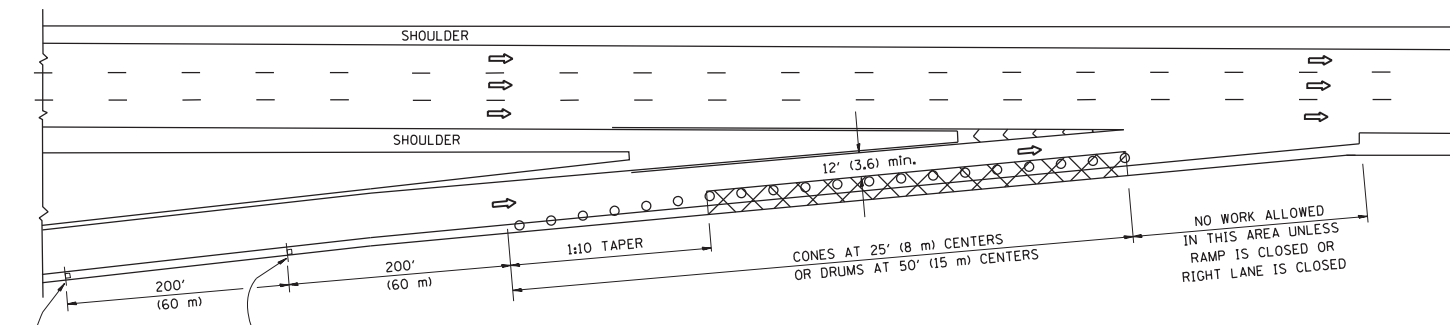
FILE NAME =	USER NAME = MaldonadoHM	DESIGNED -	REVISED -
et:\pw\work\p\idot\maldonadohm\d0350654\I-940Russell-sht-cover.dgn	I-940Russell-sht-cover.dgn	DRAWN - CADD	REVISED -
	PLOT SCALE = 100.0000' / in.	CHECKED - S.E.B.	REVISED -
	PLOT DATE = 7/18/2013	DATE - 06-16-04	REVISED -

**STATE OF ILLINOIS
DEPARTMENT OF TRANSPORTATION**

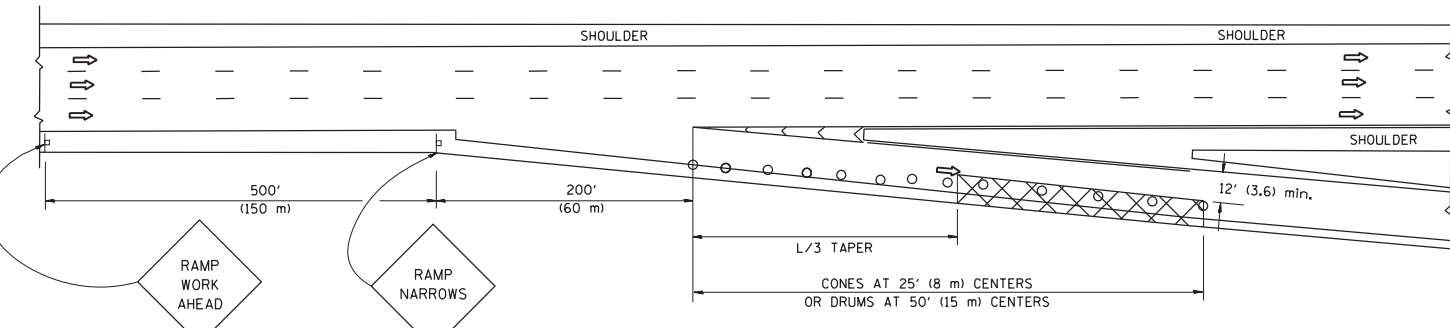
BENCHING DETAIL FOR EMBANKMENT WIDENING			
SCALE: NONE	SHEET NO. 1 OF 1 SHEETS	STA.	TO STA.

F.A. RTE.	SECTION	COUNTY	TOTAL SHEETS	SHEET NO.
94	49-1-A	LAKE	16	8
BD-51			CONTRACT NO. 60X05	
FED. ROAD DIST. NO. 1 ILLINOIS FED. AID PROJECT				

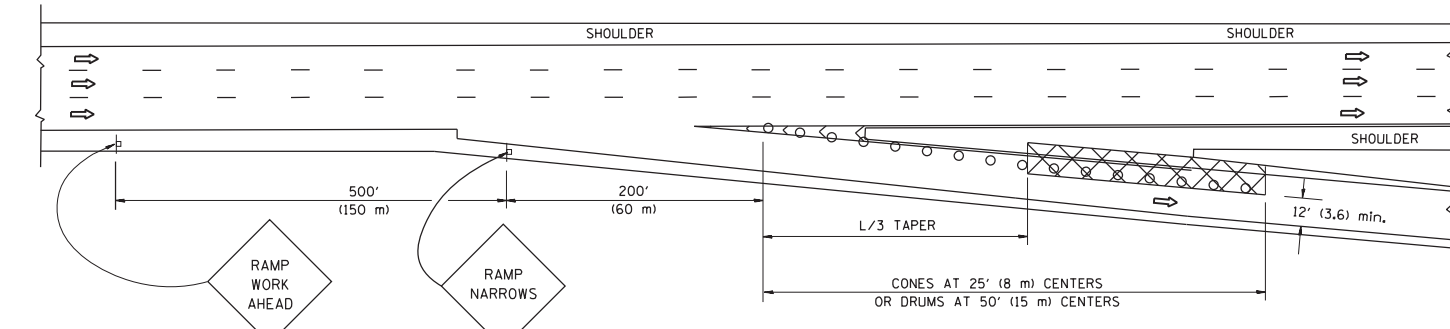
PARTIAL RAMP CLOSURE DETAILS



TYPICAL ENTRANCE RAMP



TYPICAL EXIT RAMP



TYPICAL EXIT RAMP

SYMBOLS

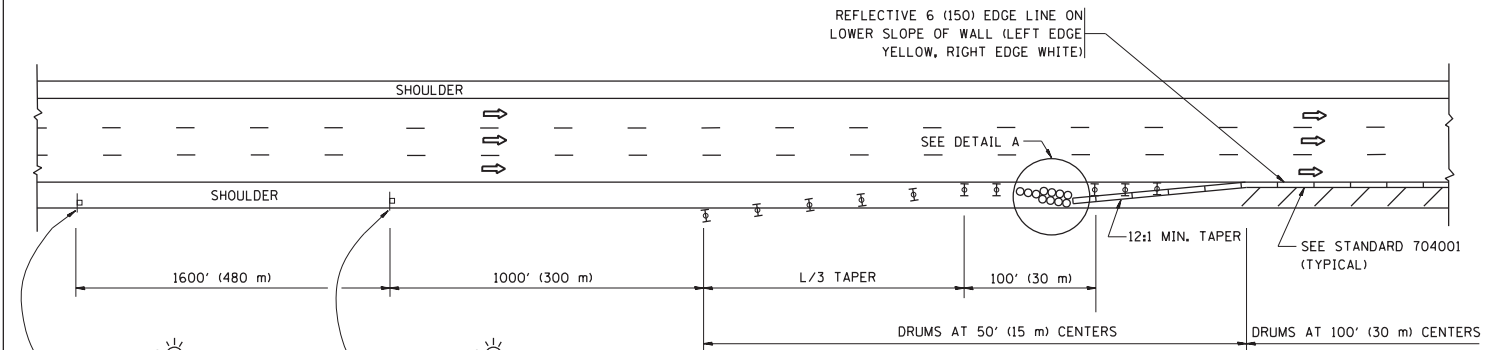
- ACTIVE WORK AREA
- SIGN ON PORTABLE OR PERMANENT SUPPORT
- FLAGGER WITH CONTROL SIGN
- TYPE II BARRICADE, DRUM OR VERTICAL BARRICADE WITH STEADY BURN MONO-DIRECTIONAL LIGHT
- CONE, DRUM OR BARRICADE

GENERAL NOTES

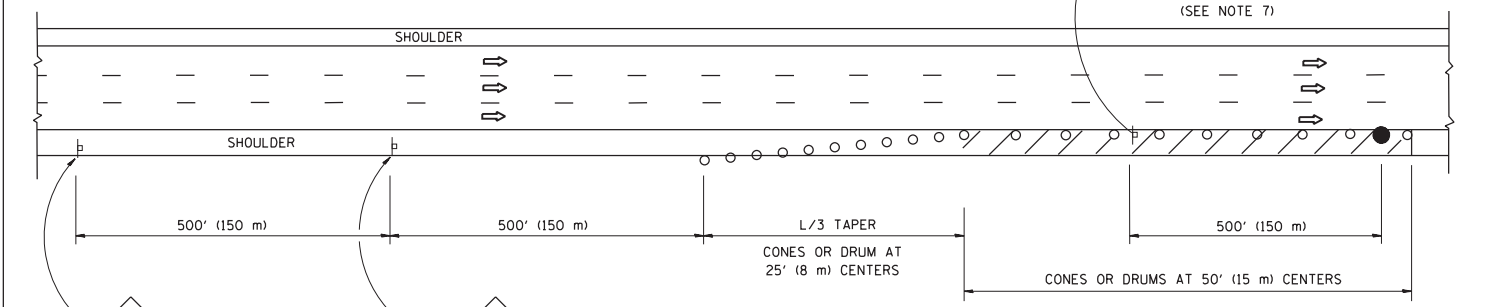
1. THE "L" DISTANCE EQUALS:

SPEED LIMIT	FORMULAS
45 mph (80 km/h) OR GREATER:	METRIC ENGLISH L=0.65(W)(S) L=(W)(S)
W = WIDTH OF OFFSET IN FEET (METERS)	
S = NORMAL POSTED SPEED MPH (KM/H)	
2. PLASTIC DRUMS WITH HIGH PERFORMANCE REFLECTIVE SHEETING AND STEADY BURNING LIGHTS ARE REQUIRED FOR ALL NIGHTTIME CLOSURES.
3. ALL SIGNS SHALL BE POST MOUNTED IF THE CLOSURE TIME EXCEEDS FOUR DAYS.
4. FLASHING LIGHTS SHALL BE USED DURING THE HOURS OF DARKNESS AND SHALL BE INSTALLED ABOVE THE FIRST TWO SETS OF SIGNS.

SHOULDER CLOSURE DETAILS

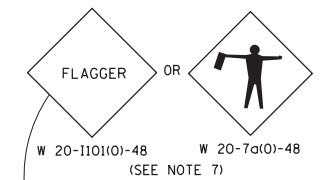


PERMANENT SHOULDER CLOSURE



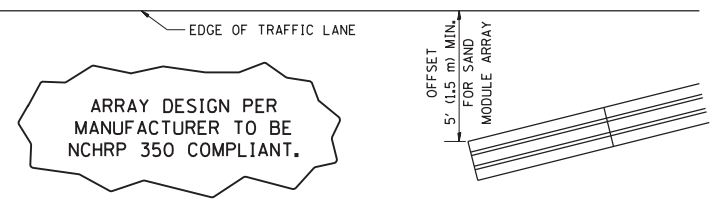
DAYTIME SHOULDER CLOSURE

OR WHEN SPECIFIED INSTALL TEMPORARY CONCRETE BARRIER WALL WITH BARRIER WALL REFLECTORS PER TRAFFIC CONTROL AND PROTECTION (EXPRESSWAYS).



THIS DETAIL IS USED WHERE:

1. VEHICLES, EQUIPMENT, WORKERS OR THEIR ACTIVITIES ENCRANCH IN AN AREA CLOSER THAN 15' (4.5 m) TO THE EDGE OF PAVEMENT FOR A PERIOD IN EXCESS OF 15 MINUTES.

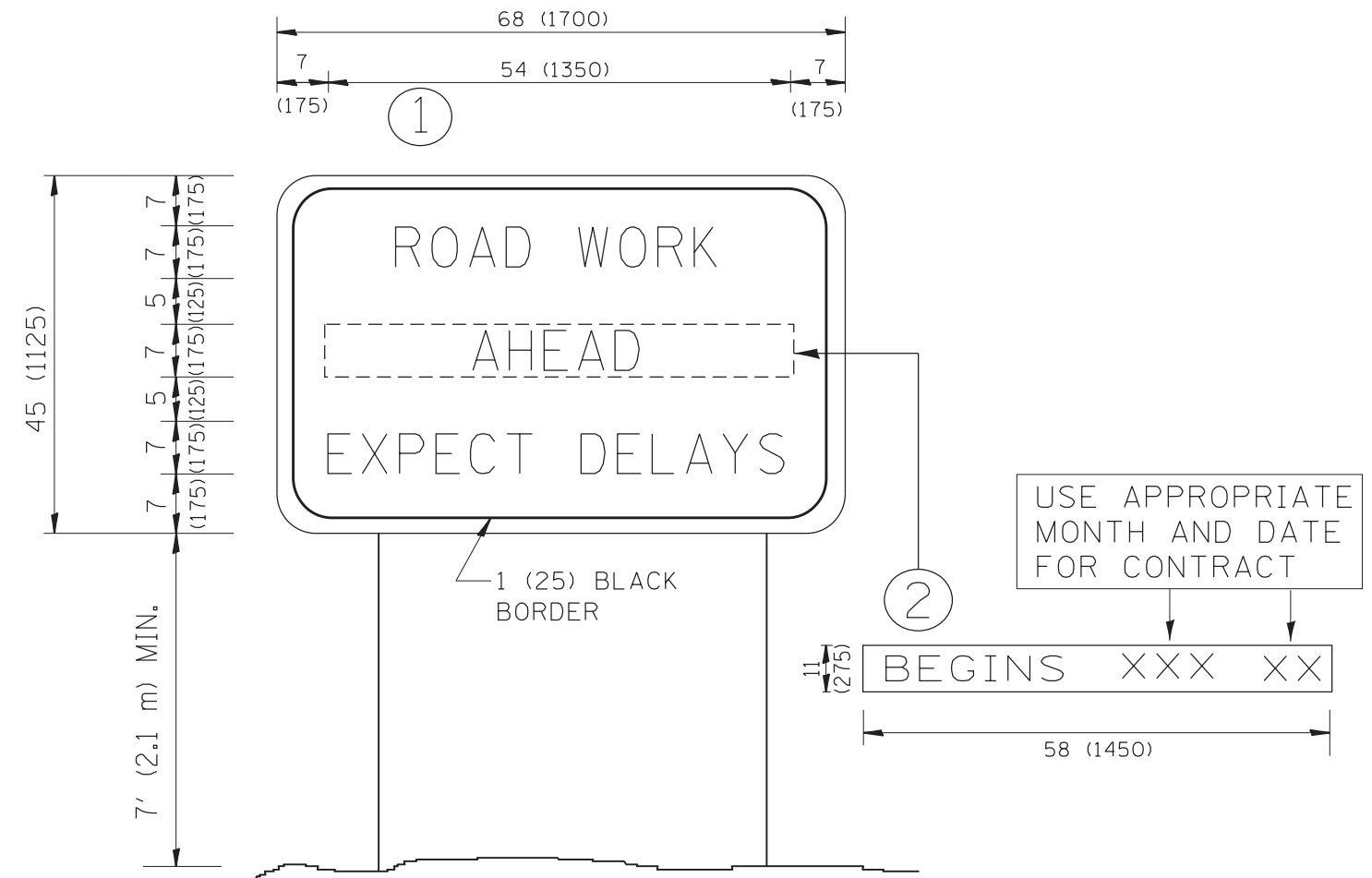


DETAIL "A" IMPACT ATTENUATOR, TEMPORARY (SEE NOTE 5)

5. THE IMPACT ATTENUATOR, TEMPORARY IS NOT REQUIRED WHEN THE TEMPORARY CONCRETE BARRIER WALL IS PROTECTED BY OR IS TIED INTO THE EXISTING GUARDRAIL. IF OFFSET IS LESS THAN 5 FEET USE NARROW USE TYPE DEVICE TO MEET NCHRP350.
6. AUTHORIZATION FROM THE DISTRICT'S BUREAU OF TRAFFIC IS REQUIRED FOR ALL FREEWAY CLOSURES.
7. THE FLAGGER AND FLAGGER SIGN ARE REQUIRED AT THE ABOVE WORK SITES WHEN:
 - a. FOUR OR MORE WORK VEHICLES ENTER THE TRAFFIC LANES IN A ONE HOUR PERIOD.
 - b. THE WORK AVTIVITY REQUIRES FREQUENT ENCRANCHMENT INTO THE LANE OPEN TO TRAFFIC.
 THE FLAGGER SHALL BE STATIONED APPROXIMATELY 100' (30 m) TO 200' (60 m) IN ADVANCE OF THE WORKERS.

ALL DIMENSIONS ARE IN INCHES (MILLIMETERS) UNLESS OTHERWISE SHOWN.

FILE NAME =	USER NAME = MaldonadoHM	DESIGNED -	REVISED - 04-03	STATE OF ILLINOIS DEPARTMENT OF TRANSPORTATION	TRAFFIC CONTROL DETAILS FOR FREEWAY SHOULDER CLOSURES AND PARTIAL RAMP CLOSURES	F.A. RTE. =	SECTION	COUNTY	TOTAL SHEETS	SHEET NO.	
et:\pw\work\p\dot\maldonadohm\d0350654\1-940Russell-sht-cover.dgn	1-940Russell-sht-cover.dgn	DRAWN - D.W.S.	REVISED - J.A.F. 12-06			94	49-1-A	LAKE	16	9	
PLOT SCALE = 100.0000' / 1"		CHECKED -	REVISED - S.P.B. 01-07			TC-17		CONTRACT NO. 60X05			
PLOT DATE = 7/18/2013		DATE - 11-96	REVISED - S.P.B. 12-09			SCALE: NONE	SHEET NO. 1 OF 1 SHEETS	STA.	TO STA.		FED. ROAD DIST. NO. 1 ILLINOIS FED. AID PROJECT



NOTES:

1. USE BLACK LETTERING ON ORANGE BACKGROUND.
2. ERECT SIGNS IN ADVANCE OF THE LOCATION FOR THE "ROAD CONSTRUCTION AHEAD" SIGN AT LOCATIONS AS DIRECTED BY THE ENGINEER.
3. ERECT SIGN ① WITH INSTALLED PANEL ② ONE WEEK PRIOR TO THE START OF CONSTRUCTION.
4. REMOVE PANEL ② SOON AFTER THE START OF CONSTRUCTION.
5. SEE SPECIAL PROVISION FOR "TEMPORARY INFORMATION SIGNING" FOR ADDITIONAL INFORMATION.
6. ONE SIGN ASSEMBLY EQUALS 25.70 SQ. FT. (2.3 SQ. M.)
7. SHALL BE PAID FOR AS TEMPORARY INFORMATION SIGNING.

ALL DIMENSIONS ARE IN INCHES (MILLIMETERS) UNLESS OTHERWISE SHOWN.

FILE NAME =	USER NAME = MaldonadoHM	DESIGNED -	REVISED - R. MIRS 09-15-97
ct:\pw_work\pwork\maldonado\0350654\1-940Russell-sht-cover.dgn		DRAWN -	REVISED - R. MIRS 12-11-97
	PLOT SCALE = 100.0000' / in.	CHECKED -	REVISED - T. RAMMACHER 02-02-99
	PLOT DATE = 7/18/2013	DATE -	REVISED - C. JUCIUS 01-31-07

**STATE OF ILLINOIS
DEPARTMENT OF TRANSPORTATION**

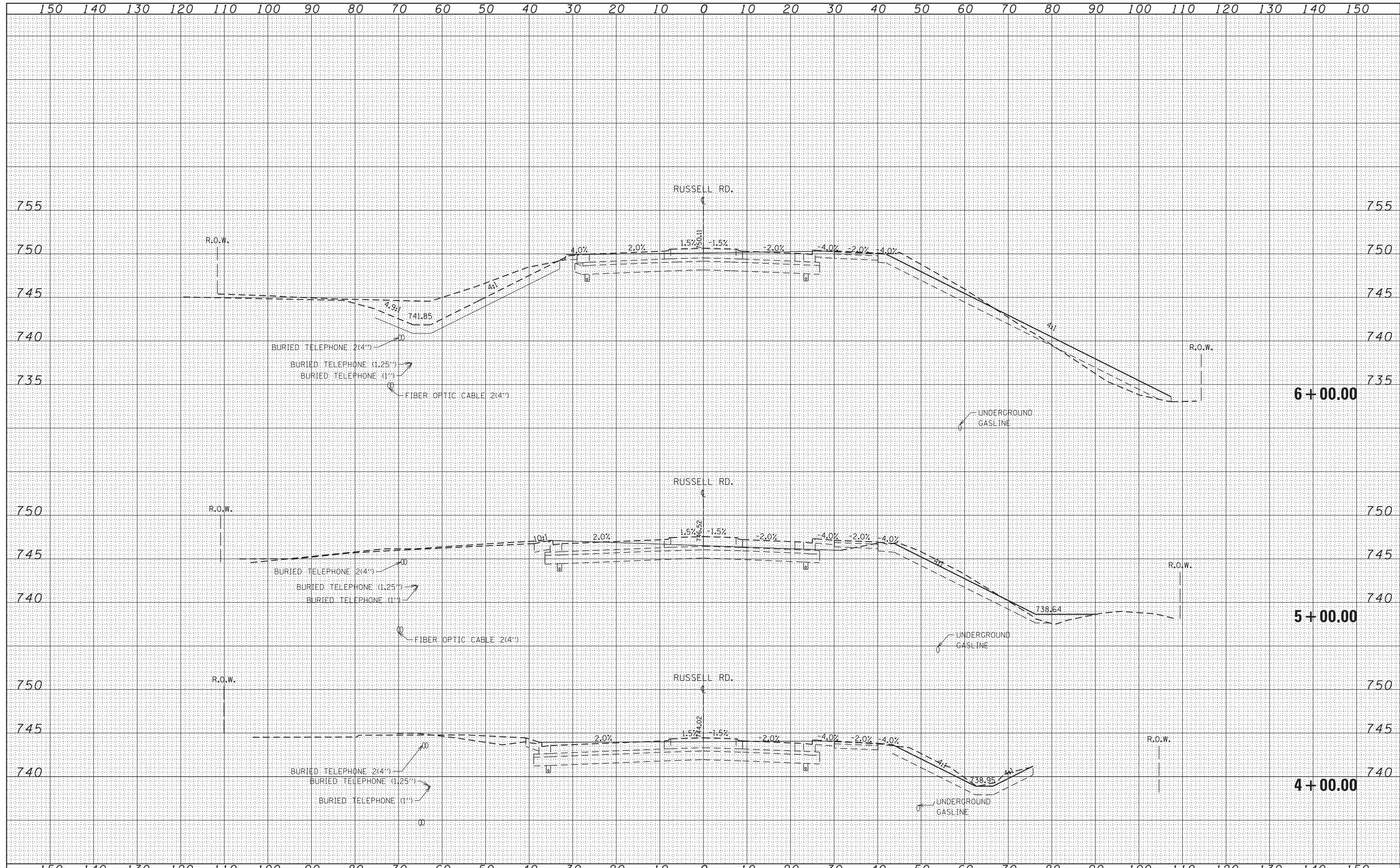
**ARTERIAL ROAD
INFORMATION SIGN**

SCALE: NONE SHEET NO. 1 OF 1 SHEETS STA. TO STA.

F.A. RTE.	SECTION	COUNTY	TOTAL SHEETS	SHEET NO.
94	49-1-A	LAKE	16	10
TC-22			CONTRACT NO. 60X05	
<small>FED. ROAD DIST. NO. 1 ILLINOIS FED. AID PROJECT</small>				

DATE	
BY	
SURVEYED	
PLOTTED	
TEMPLATE	
AREAS	
CHECKED	
FINISH	
NO.	

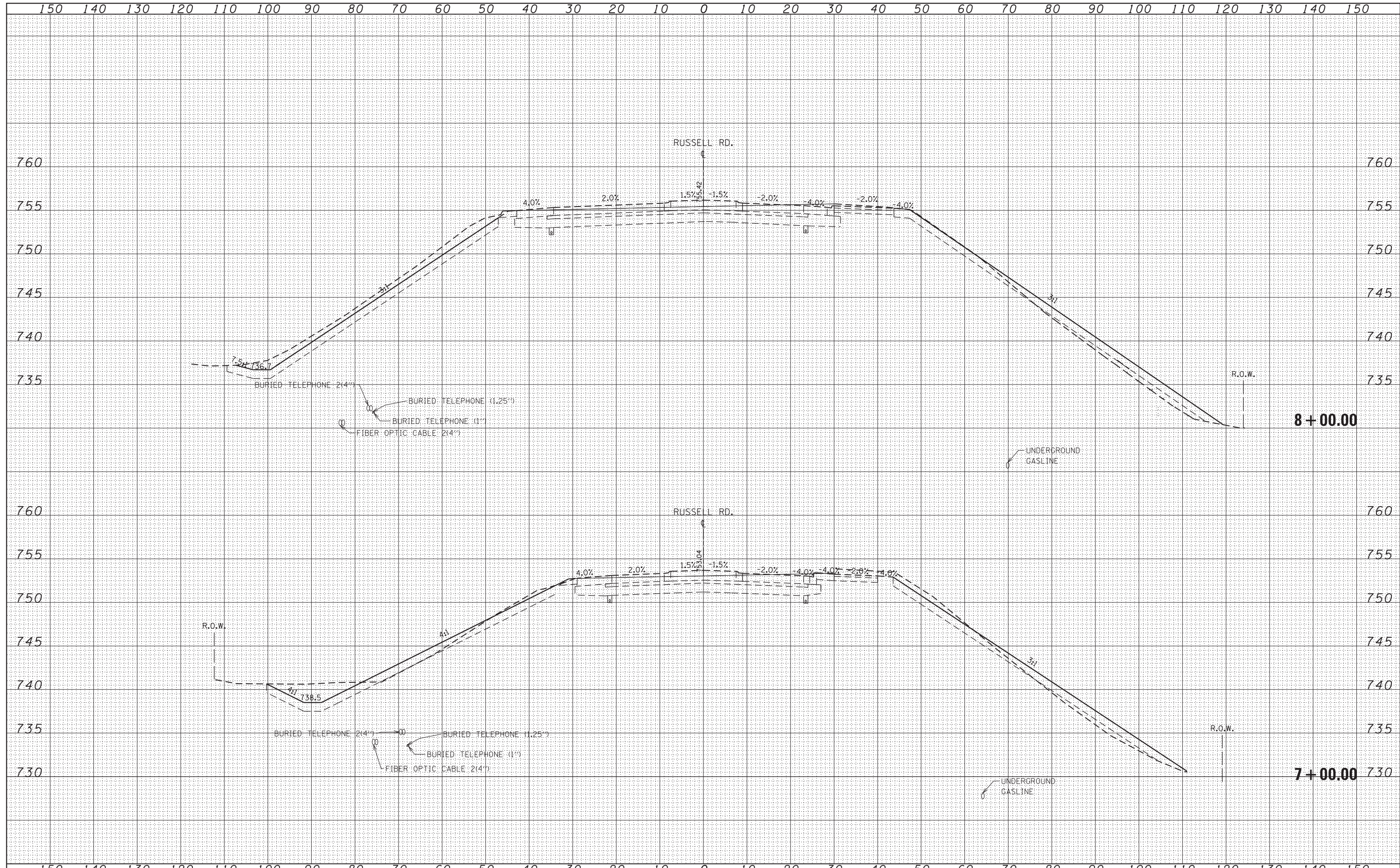
DATE	
BY	
SURVEYED	
PLOTTED	
TEMPLATE	
AREAS	
CHECKED	
ORIGINAL	
NO.	



FILE NAME =	USER NAME = MaldonadoHM	DESIGNED -	REVISED -	STATE OF ILLINOIS DEPARTMENT OF TRANSPORTATION	CROSS SECTIONS I-94 AT RUSSELL RD.			F.A.I. R.T.E.	SECTION	COUNTY	TOTAL SHEETS	SHEET NO.
cs:\pw_work\pwidot\maldonadohm\d0350654\DI01911	sh-t-xssht-Russell.emb.dgn	DRAWN -	REVISED -					94	49-1-A	LAKE	16	11
Default	PLOT SCALE = 20.0000' / in.	CHECKED -	REVISED -		CONTRACT NO. 60X05			ILLINOIS FED. AID PROJECT				
	PLOT DATE = 8/7/2013	DATE -	REVISED -		SCALE:	SHEET	OF	SHEETS	STA. 4+00.00	TO STA. 6+00.00		

DATE	
BY	
FINAL SURVEY NO.	
SURVEYED PLOTTED	
NOTE BOOK	
AREAS CHECKED	

DATE	
BY	
ORIGINAL SURVEY NO.	
SURVEYED PLOTTED	
NOTE BOOK	
AREAS CHECKED	



FILE NAME =
 c:\pw_work\pwidot\maldonado\0350654\0101911

USER NAME = MaldonadoHM
 DESIGNED -
 DRAWN -
 PLOT SCALE = 20.0000' / in.
 CHECKED -
 DATE -

REVISÉ -
 REVISÉ -
 REVISÉ -
 REVISÉ -

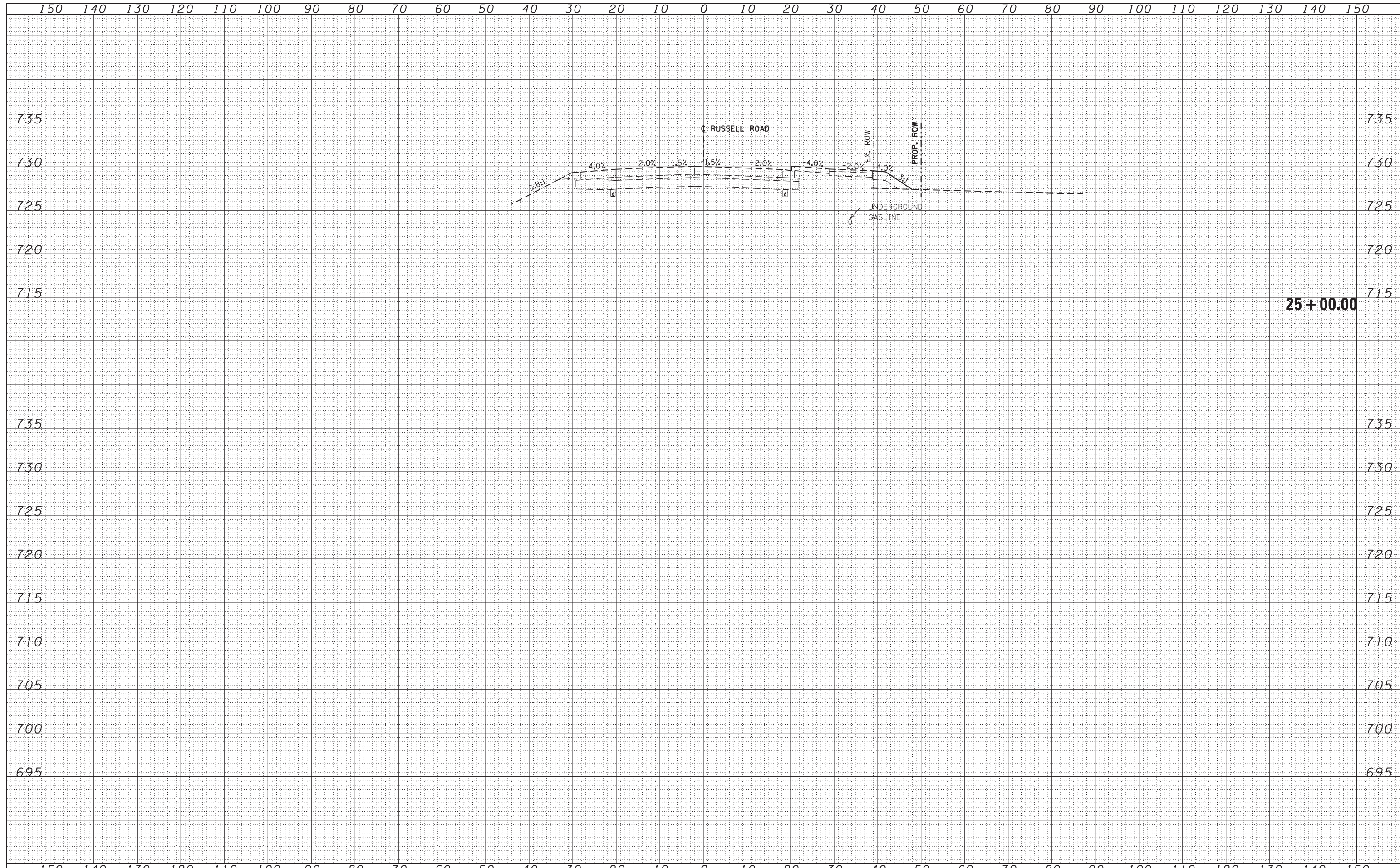
**STATE OF ILLINOIS
 DEPARTMENT OF TRANSPORTATION**

**CROSS SECTIONS
 I-94 AT RUSSELL RD.**
 SCALE: SHEET OF SHEETS STA. 7+00.00 TO STA. 8+00.00

F.A.I. RTE.	SECTION	COUNTY	TOTAL SHEETS	SHEET NO.
94	49-1-A	LAKE	16	12
CONTRACT NO. 60X05				
ILLINOIS FED. AID PROJECT				

DATE	
BY	
SURVEYED	
PLOTTED	
TEMPLATE	
AREAS	
CHECKED	
FINAL SURVEY	
NOTE BOOK	
NO.	

DATE	
BY	
SURVEYED	
PLOTTED	
TEMPLATE	
AREAS	
CHECKED	
ORIGINAL SURVEY	
NOTE BOOK	
NO.	

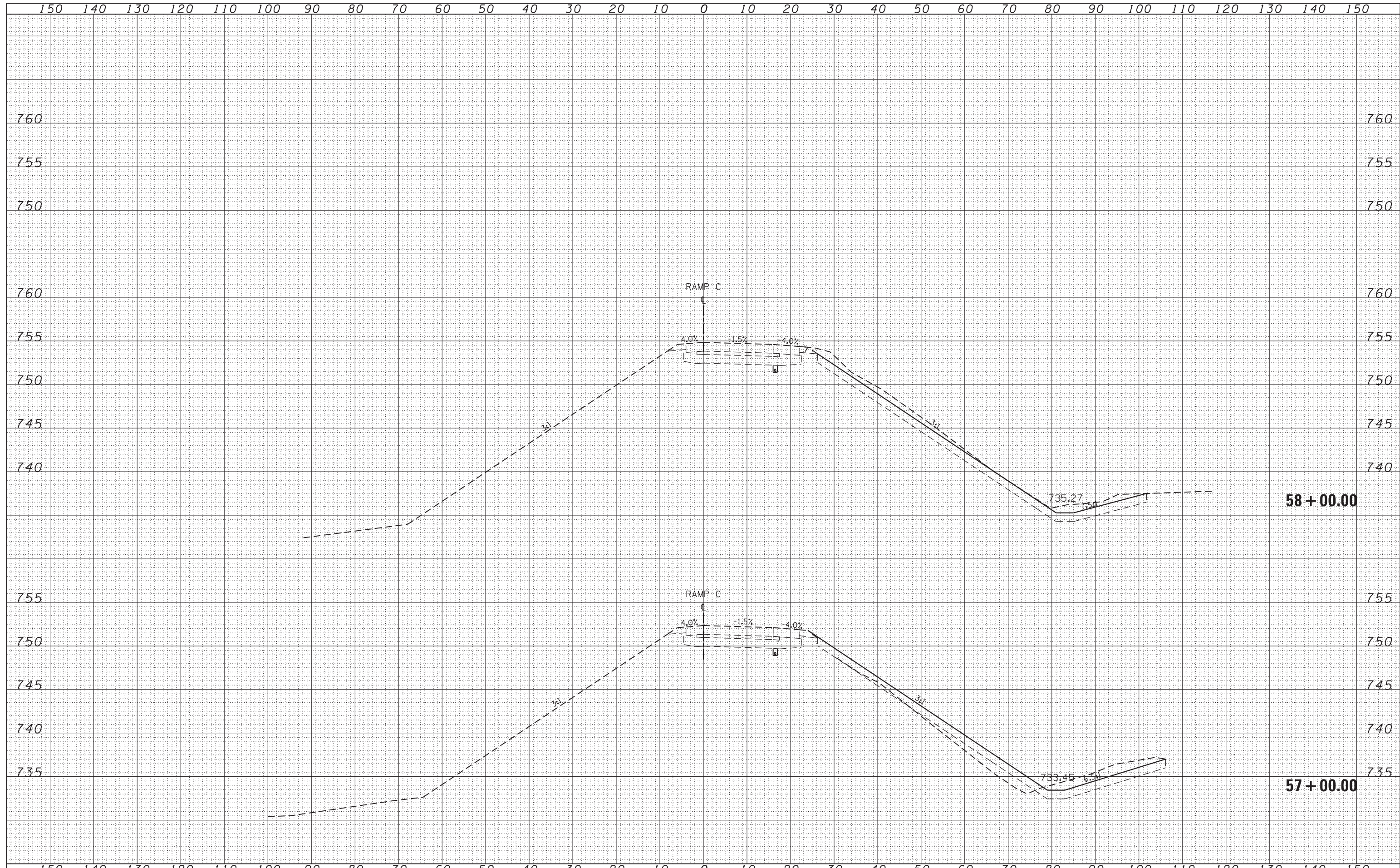


FILE NAME =	USER NAME = MaldonadoHM	DESIGNED -	REVISED -	<p align="center">STATE OF ILLINOIS DEPARTMENT OF TRANSPORTATION</p> <p align="center">CROSS SECTIONS I-94 AT RUSSELL RD.</p>	F.A.I. RTÉ.	SECTION	COUNTY	TOTAL SHEETS	SHEET NO.
es:\pw_work\pwidot\maldonadom\0350654\0101911	shht-xssht-Russell.dgn	DRAWN -	REVISED -		94	49-1-A	LAKE	16	13
Default	PLOT SCALE = 20.0000' / in.	CHECKED -	REVISED -		CONTRACT NO. 60X05				
	PLOT DATE = 7/17/2013	DATE -	REVISED -		SCALE:	SHEET	OF	SHEETS	STA. 24+17.05

ILLINOIS FED. AID PROJECT

DATE	
BY	
SURVEYED	
PLOTTED	
TEMPLATE	
AREAS	
CHECKED	
FINAL SURVEY	
NOTE BOOK	
NO.	

DATE	
BY	
SURVEYED	
PLOTTED	
TEMPLATE	
AREAS	
CHECKED	
ORIGINAL SURVEY	
NOTE BOOK	
NO.	



FILE NAME =
 c:\pw_work\pwidot\maldonado\0350654\0101911

USER NAME = MaldonadoHM
 DESIGNED -
 DRAWN -
 CHECKED -
 DATE -

REVISED -
 REVISED -
 REVISED -
 REVISED -

**STATE OF ILLINOIS
 DEPARTMENT OF TRANSPORTATION**

CROSS SECTIONS
I-94 AT RUSSELL RD. - RAMP C
 SCALE: SHEET OF SHEETS STA. 57+00.00 TO STA. 59+00.00

F.A.I. RTE.	SECTION	COUNTY	TOTAL SHEETS	SHEET NO.
94	49-1-A	LAKE	16	16
CONTRACT NO. 60X05			ILLINOIS FED. AID PROJECT	