

STATE OF ILLINOIS
DEPARTMENT OF TRANSPORTATION
DIVISION OF HIGHWAYS

**PROPOSED
HIGHWAY PLANS**

FAI ROUTE 55 (I-55)
I-94 (DAN RYAN EXPR.) TO US 41 (LAKE SHORE DRIVE)
SECTION: 2013-048I
PERMANENT PROTECTIVE SHIELDING
COOK COUNTY
C-91-425-13
SN 016-1055 AND SN 016-0036

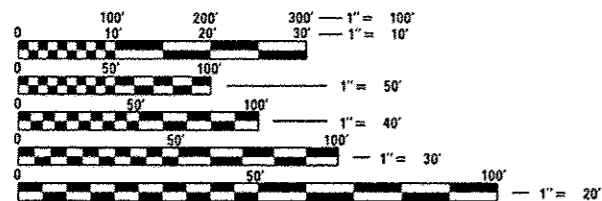
F.A.I. RTE.	SECTION	COUNTY	TOTAL SHEETS	SHEET NO.
55	2013-048I	COOK	8	1
		ILLINOIS	CONTRACT NO. 60X06	

FOR INDEX OF SHEETS, SEE SHEET NO. 2

IMPROVEMENTS ARE LOCATED IN THE CITY OF CHICAGO

TRAFFIC DATA

N / A



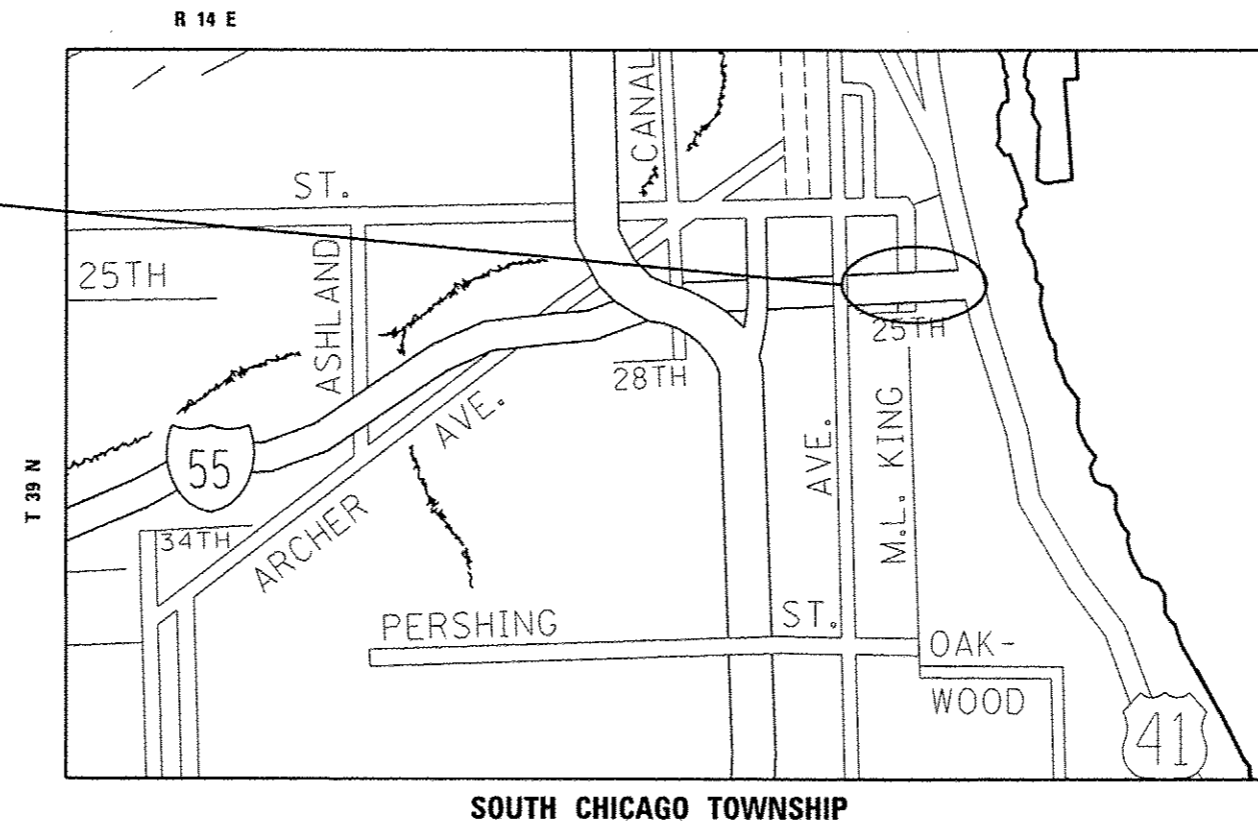
FULL SIZE PLANS HAVE BEEN PREPARED USING STANDARD ENGINEERING SCALES. REDUCED SIZED PLANS WILL NOT CONFORM TO STANDARD SCALES. IN MAKING MEASUREMENTS ON REDUCED PLANS, THE ABOVE SCALES MAY BE USED.

C.U.A.N.
CHICAGO UTILITY ALERT NETWORK
1-312-744-7000

PROJECT ENGINEER J. ALAIN MIDY (847) 221-3056
PROJECT MANAGER ISSAM RAYYAN (847) 705-4178

CONTRACT NO. 60X06

LOCATION OF IMPROVEMENT



LOCATION OF SECTION INDICATED THUS: - [Symbol]

STATE OF ILLINOIS
DEPARTMENT OF TRANSPORTATION
DIVISION OF HIGHWAYS

SUBMITTED July 9 2013
John Frimman, Jr.
DEPUTY DIRECTOR OF HIGHWAYS, REGION ENGINEER

Aug 16 2013
John D. Baranzelli, PE, Esq.
ENGINEER OF DESIGN AND ENVIRONMENT

Aug 16 2013
Chris Osman, PE, Esq.
DIRECTOR OF HIGHWAYS, CHIEF ENGINEER

PRINTED BY THE AUTHORITY OF THE STATE OF ILLINOIS

INDEX OF SHEETS

1	TITLE SHEET
2	INDEX OF SHEETS, STATE STANDARDS, AND GENERAL NOTES
3	SUMMARY OF QUANTITIES
4	GENERAL BRIDGE PLAN
5-7	BRIDGE PLANS
8	PERMANENT PROTECTIVE SHIELD

STATE STANDARDS

STANDARD NO	DESCRIPTION
701006-04	OFF-ROAD OPERATIONS, (15') TO (24") FROM PAVEMENT EDGE
701901-02	TRAFFIC CONTROL DEVICES

GENERAL NOTES

BEFORE STARTING ANY EXCAVATION, THE CONTRACTOR SHALL CALL C.U.A.N. AT 312-744-7000 FOR FIELD LOCATIONS OF BURIED ELECTRIC, TELEPHONE AND GAS UTILITIES (48 HOURS NOTIFICATION IS REQUIRED).

THE CONTRACTOR WILL NOT BE ALLOWED TO SET UP A YARD OR FIELD OFFICE ON STATE PROPERTY WITHOUT WRITTEN PERMISSION FROM THE DEPARTMENT

THE CONTRACTOR SHALL BE AWARE THAT SOME LOCATIONS MAY HAVE ELECTRICAL CONDUITS AND/ OR FIBERGLASS DRAIN PIPES

TO COORDINATE ACCESS TO THE McCORMICK PLACE PARKING LOT CALL (312)791-6081 TWO (2) WEEKS BEFORE START OF WORK

DO NOT SCALE PLANS FOR CONSTRUCTION DIMENSIONS

THE CONTRACTOR SHALL COORDINATE CONSTRUCTION ACTIVITIES WITH UTILITY COMPANIES

THE CONTRACTOR SHALL ADJUST THE PROTECTIVE SHIELDING TO RIDE ABOVE THE EXISTING LIGHTING FIXTURES IN ORDER TO MAINTAIN THE EXISTING LEVEL OF LIGHTING OF THE ROADWAY UNDERNEATH. DETAILS SHALL BE APPROVED BY THE ENGINEER BEFORE INSTALLATION. A CLEARANCE OF 1 1/2" "+" OR "-" 1/4" AROUND THE FIXTURE SHALL BE PROVIDED FOR THE FUTURE MAINTENANCE

ANY DAMAGES TO THE CONDUITS OR PIPES CAUSED BY THE CONTRACTOR'S OPERATIONS SHALL BE REPLACED OR REPAIRED BY THE CONTRACTOR AT HIS/HER EXPENSE.

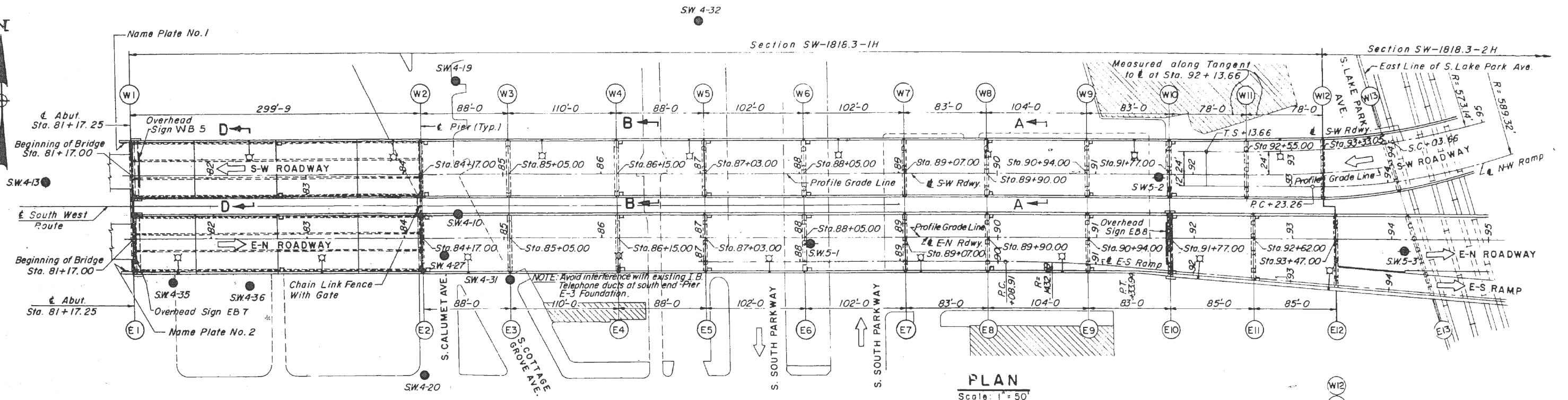
PLAN DIMENSIONS AND DETAILS RELATIVE TO EXISTING STRUCTURES HAVE BEEN TAKEN FROM EXISTING PLANS AND ARE SUBJECT TO NOMINAL CONSTRUCTION VARIATIONS. IT SHALL BE THE CONTRACTOR'S RESPONSIBILITY TO VERIFY SUCH DIMENSIONS IN THE FIELD AND MAKE NECESSARY ADJUSTMENTS PRIOR TO ORDERING OF MATERIALS. SUCH VARIATIONS SHALL NOT BE CAUSE FOR ADDITIONAL COMPENSATION FOR A CHANGE IN THE SCOPE OF THE WORK, HOWEVER, THE CONTRACTOR WILL BE PAID FOR THE QUANTITY ACTUALLY FURNISHED AT THE UNIT PRICE BID FOR THE WORK.

TO COORDINATE ACCESS TO STRUCTURES SN 016-1055 AND SN 016-0036 THE CONTRACTOR SHALL MAKE ARRANGEMENTS WITH THE STEVENSON YARD AT (708)485-2446 TO GET THE KEYS TO THE GATES.

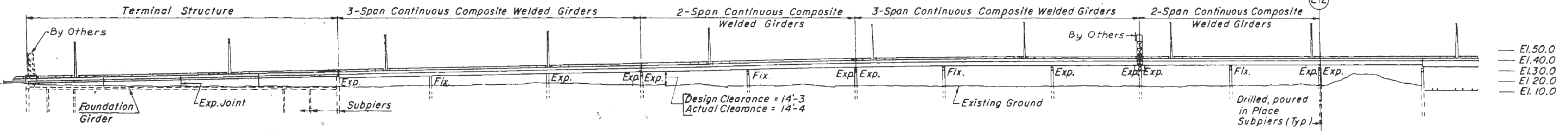
WHEN ARTIFICIAL LIGHTING IS UTILIZED IN NIGHT OPERATIONS, THE CONTRACTOR SHALL EXERCISE THE UTMOST PRECAUTIONS IN PREVENTING ADVERSE VISIBILITY TO THE MOTORING PUBLIC AND ADJOINING RESIDENTIAL AREAS.

THE CONTRACTOR SHALL PROTECT THE WORK ZONE AREA FROM VEHICLES AND PEDESTRIANS, COST INCLUDED IN THE CONTRACT.

FILE NAME : c:\p\work\puidot\fooster_j\d8351547\0142513-Design.dgn	USER NAME : fooster_j	DESIGNED -	REVISED -	STATE OF ILLINOIS DEPARTMENT OF TRANSPORTATION	INDEX OF SHEETS, STATE STANDARDS, AND GENERAL NOTES	F.A.I. RTE.	SECTION	COUNTY	TOTAL SHEETS	SHEET NO.
PLOT SCALE : 100.0000 / 1 in.	CHECKED -	REVISED -	55			2013-0481	COOK	8	2	
PLOT DATE : 7/12/2013	DATE -	REVISED -	CONTRACT NO. 60X06							
Default			ILLINOIS FED. AID PROJECT							
					SCALE:	SHEET	OF	SHEETS	STA.	TO STA.



PLAN
Scale: 1" = 50'

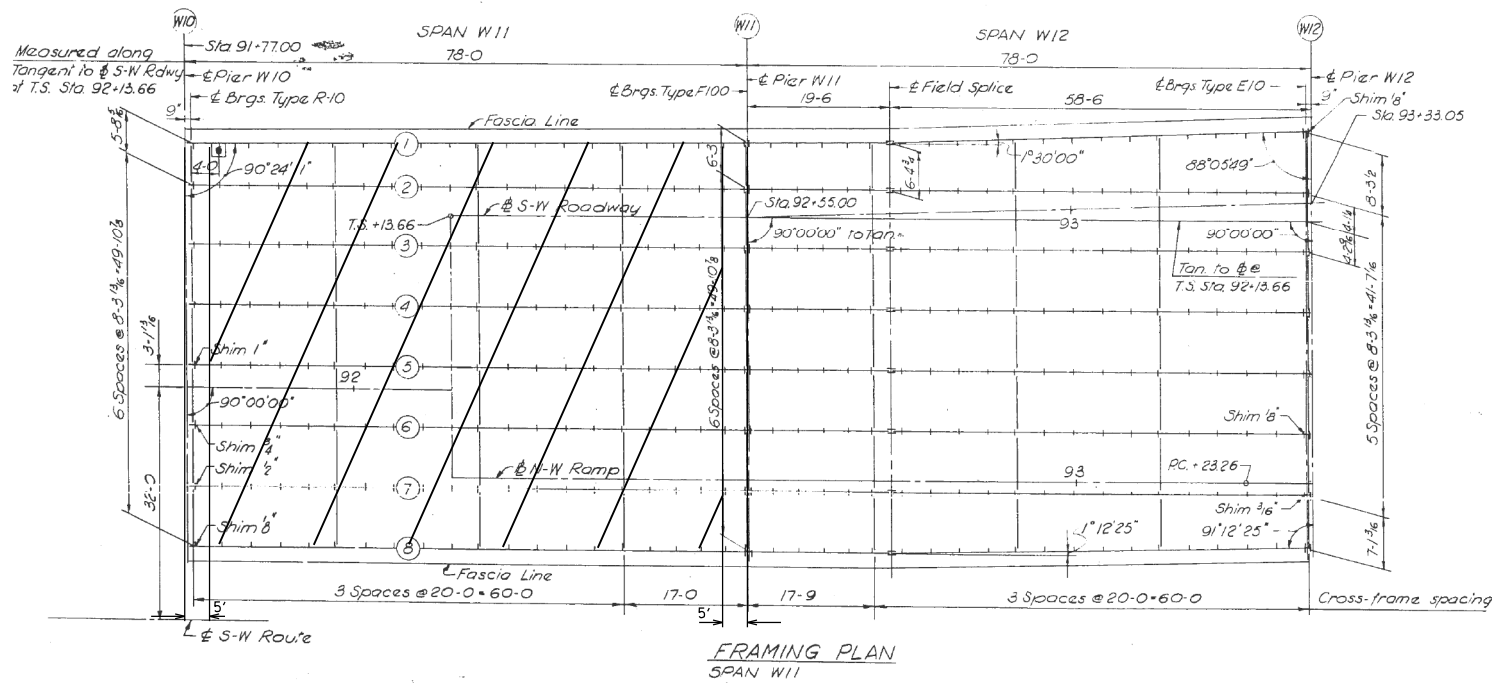
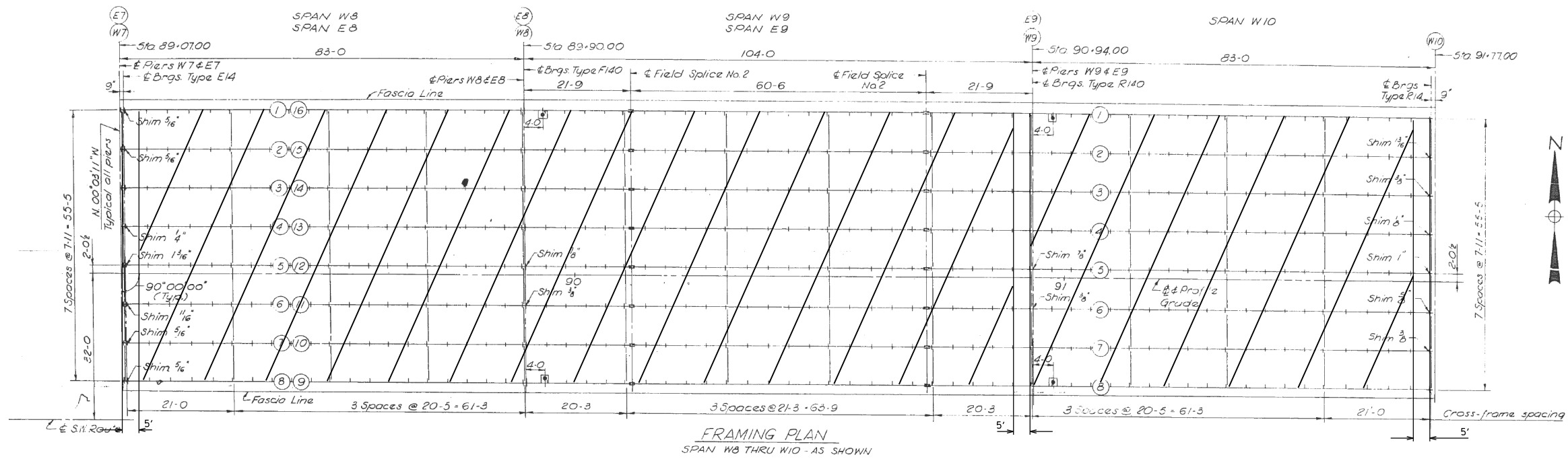


ELEVATION
Scale: 1" = 50'

NOTE: For Dimensions see Typical Section A-A

FOR INFORMATION ONLY

FILE NAME =	USER NAME = fosterjr	DESIGNED -	REVISED -	STATE OF ILLINOIS DEPARTMENT OF TRANSPORTATION	BRIDGE PLAN			F.A.I. RTE.	SECTION	COUNTY	TOTAL SHEETS	SHEET NO.			
Default	et:\pw\work\p\midot\Fosterjr\d0351547\0142513-Design.dgn	DRAWN -	REVISED -		SCALE:	SHEET	OF	SHEETS	STA.	TO STA.	55	2013-0481	COOK	8	5
	PLOT SCALE = 100.0000' / in.	CHECKED -	REVISED -		CONTRACT NO. 60X06										
	PLOT DATE = 7/12/2013	DATE -	REVISED -		ILLINOIS FED. AID PROJECT										

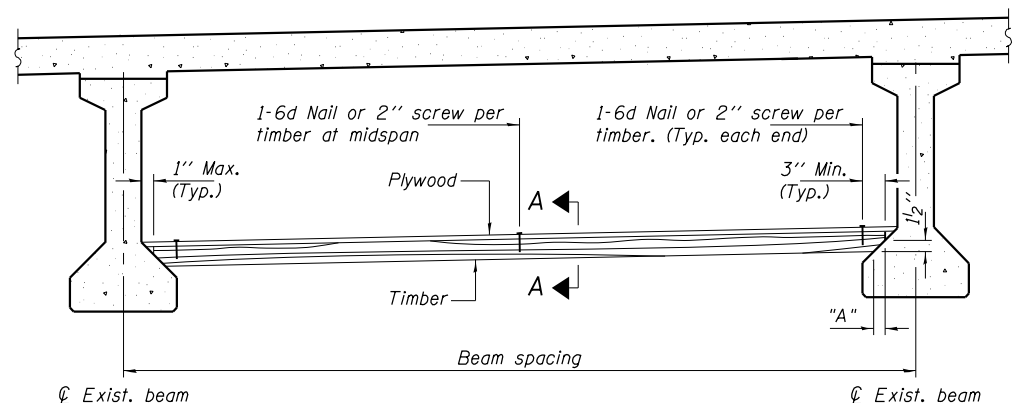


 HATCHED AREA INDICATES PERMANENT PROTECTIVE SHIELDING

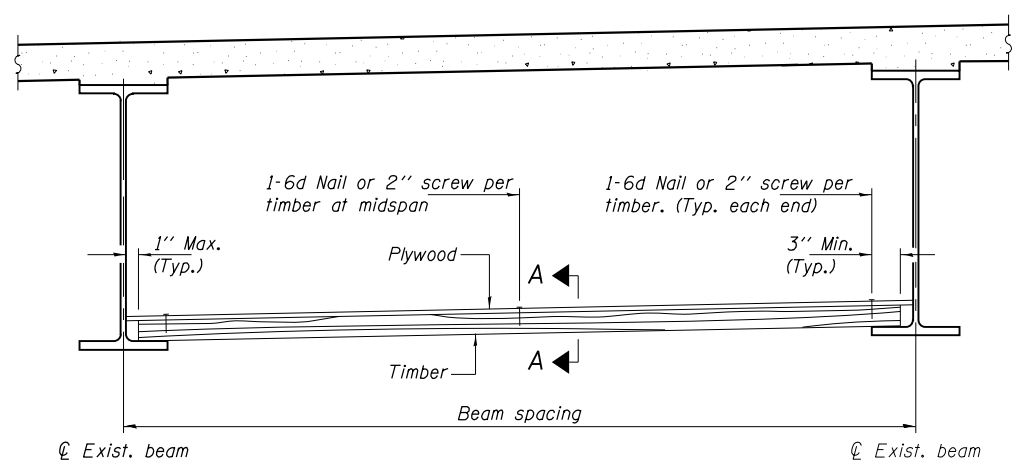
SN 016-1055

Item	Unit	Total
Protective Shield (Permanent)	Sq. Yd.	1947.2

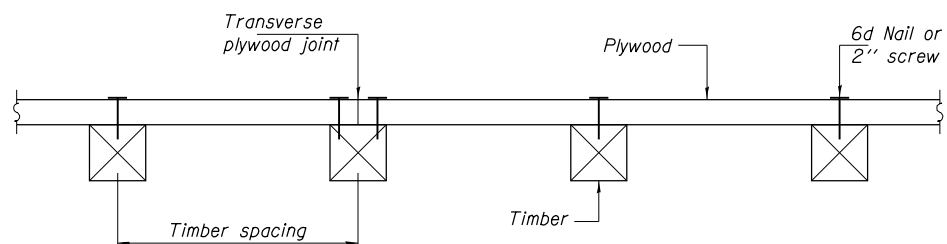
STATE OF ILLINOIS
DEPARTMENT OF TRANSPORTATION



PPC I-BEAMS AND BULB-T's



STEEL BEAMS



SECTION A-A

Notes: See special provision for Permanent Protective Shield System.

Timber sizes shown are nominal sizes. Rough sawn timber of the dimensions shown will also be considered acceptable.

The minimum Fb and Fv values shown are the tabulated design values given in the National Design Specification for Wood Construction for No. 2 Spruce-Pine-Fir without adjustment factors applied. Better grades or other species with equal or higher allowable stresses will also be considered acceptable.

The timber spacings shown have been determined using allowable stresses with all adjustment factors necessary for the anticipated service conditions. All timber shall be treated.

Plywood shall be $\frac{5}{8}$ " rated Exterior type plywood by APA.

Plywood shall be placed such that the face grain is perpendicular to the timber supports. When less than a full sheet (4' width) of plywood is used, the width of the strip used shall not be less than 2'.

Transverse plywood joints shall be supported by timbers.

When 4" x 6" timbers are used, they shall be placed such that the wide face is horizontal and the narrow face is vertical.

Design load = 200 psf.

TIMBER SPACING

Beam Spacing (ft.)	Timber Sizes (in.)		
	4" x 4" with min. Fb=775 psi Fv=135 psi	4" x 6" with min. Fb=775 psi Fv=135 psi	6" x 6" with min. Fb=575 psi Fv=125 psi
	Maximum Timber Spacing (in.)		
4.5	16	16	16
4.75	16	16	16
5.0	16	16	16
5.25	16	16	16
5.5	16	16	16
5.75	16	16	16
6.0	16	16	16
6.25	12	16	16
6.5	12	16	16
6.75	12	16	16
7.0	8	16	16
7.25	8	16	16
7.5	8	16	16
7.75	8	16	16
8.0	8	12	16
8.25	8	12	16
8.5	6	12	12
8.75	6	12	12
9.0	6	8	12

PPC I-BEAMS AND BULB-T's

BEAM	"A"
36" I-Beam	1 1/2"
42" I-Beam	1 1/2"
48" I-Beam	1 1/2"
54" I-Beam	1 5/8"
63" Bulb-T	3 3/8"
72" Bulb-T	3 3/8"

BILL OF MATERIAL

Item	Unit	Total
Protective Shield (Permanent)	Sq. Yd.	3992.5

PPS-1 01-22-09

PERMANENT PROTECTIVE SHIELD

FILE NAME = c:\pwwork\pwwidot\foosterjr\d0351547\0142513-Design.dgn Default	USER NAME = foosterjr 01-22-09	DESIGNED - DRAWN - CHECKED - DATE -	REVISED - REVISED - REVISED - REVISED -	STATE OF ILLINOIS DEPARTMENT OF TRANSPORTATION	PERMANENT PROTECTIVE SHIELD	F.A.I. RTE. 55	SECTION 2013-0481	COUNTY COOK	TOTAL SHEETS 8	SHEET NO. 8
						SCALE:	SHEET OF SHEETS STA. TO STA.	CONTRACT NO. 60X06 ILLINOIS FED. AID PROJECT		