

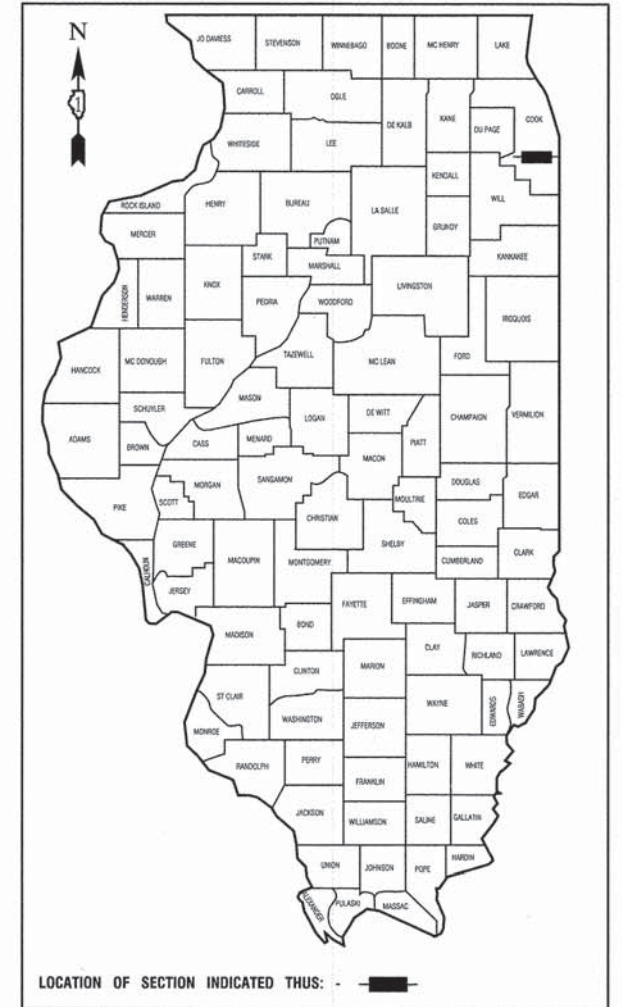
STATE OF ILLINOIS
DEPARTMENT OF TRANSPORTATION
DIVISION OF HIGHWAYS

**PLANS FOR PROPOSED
FEDERAL AID HIGHWAY**

91ST STREET
88TH AVENUE TO ROBERTS ROAD
SIDEWALK CONSTRUCTION
SECTION NO.: 12-00063-00-SW
PROJECT NO. : SRTS-4009(176)
CITY of HICKORY HILLS
COOK COUNTY
JOB NO. C-91-481-12

F. A. DIST.	SECTION	COUNTY	TOTAL SHEETS	SHEET NO.
	12-00063-00-SW	COOK	15	1
STA.		TO STA.		
FED. ROAD DIST. NO. 1		ILLINOIS	FED. AID PROJECT SRTS-4009(176)	

CONTRACT #63855



LOCATION OF SECTION INDICATED THIS: -

STATE OF ILLINOIS DEPARTMENT OF TRANSPORTATION
DIVISION OF HIGHWAYS

Approved: June 17, 2013
Michael Housley
Mayor, City of Hickory Hills

Passed: July 22, 2013
C. Holt
District 1 Engineer of Local Roads & Streets

Released for Bid Based on Limited Review: July 29, 2013
John F. ...
Deputy Director of Highways, Region 1 Engineer

PRINTED BY THE AUTHORITY OF
THE STATE OF ILLINOIS

PREPARED BY OR UNDER THE
DIRECT SUPERVISION OF:
Thomas R. Jiang
6/18/13
THOMAS R. JIANG
62-3845
REGISTERED
PROFESSIONAL
ENGINEER
STATE OF ILLINOIS
LICENSE EXPIRES: 11/30/13



INDEX OF SHEETS

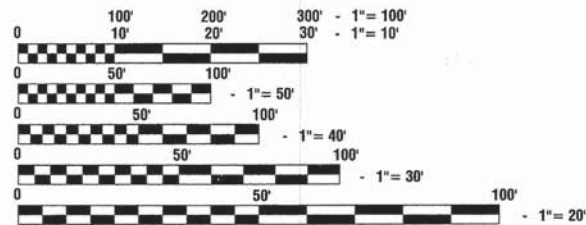
1. COVER SHEET, INDEX OF SHEETS & STATE STANDARDS
2. SUMMARY OF QUANTITIES & GENERAL NOTES
3. TYPICAL CROSS SECTIONS
- 4.-8. PLAN & PROFILE
9. RETAINING WALL PROFILE
- 10.-13. CROSS SECTIONS
- 14.-15. IDOT DISTRICT 1 STANDARD DETAILS

HIGHWAY STANDARDS

- | | |
|-----------|---|
| 000001-06 | STANDARD SYMBOLS, ABBREVIATIONS AND PATTERNS |
| 424001-07 | PERPENDICULAR CURB RAMPS |
| 424021-01 | DEPRESSED CORNER FOR SIDEWALKS |
| 424026-01 | ENTRANCE / ALLEY PEDESTRIAN CROSSINGS |
| 442201-03 | CLASS C AND D PATCHES |
| 606001-05 | CONCRETE CURB TYPE B AND COMBINATION CONCRETE CURB AND GUTTER |
| 701501-06 | URBAN LANE CLOSURE, 2L, 2W, UNDIVIDED |
| 701701-08 | URBAN LANE CLOSURE, MULTILANE INTERSECTION |
| 701801-05 | SIDEWALK, CORNER OR CROSSWALK CLOSURE |
| 701901-02 | TRAFFIC CONTROL DEVICES |
| 720001-01 | SIGN PANEL MOUNTING DETAILS |
| 720006-03 | SIGN PANEL ERECTION DETAILS |
| 720011-01 | METAL POST FOR SIGNS, MARKERS AND DELINEATORS |
| 728001-01 | TELESCOPING STEEL SIGN SUPPORT |
| 729001-01 | APPLICATIONS OF TYPES A & B METAL POSTS (FOR SIGNS AND MARKERS) |
| 731001-01 | BASE FOR TELESCOPING STEEL SIGN SUPPORT |

DESIGN DESIGNATION - LOCAL ROAD
POSTED SPEED LIMIT - 20 MPH
TRAFFIC = 1750 VPD

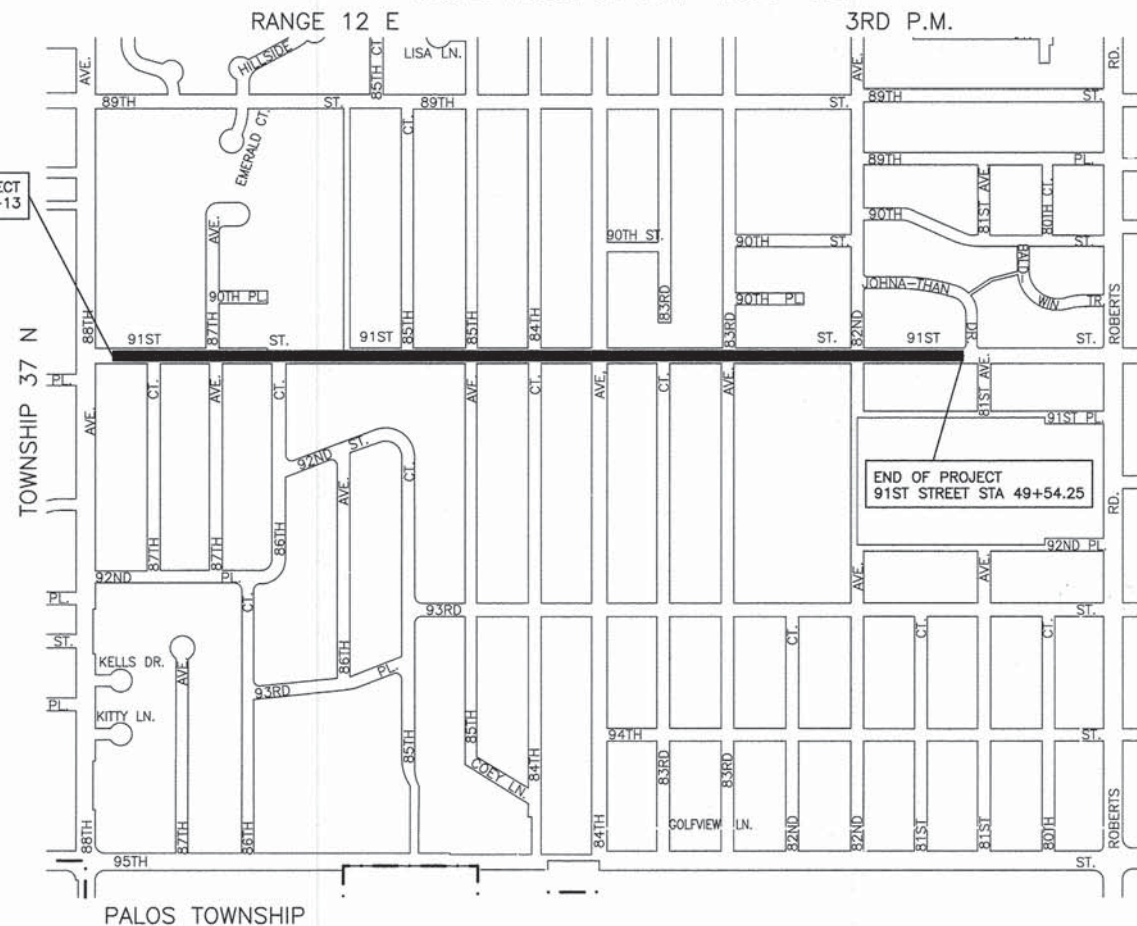
SCALES
PLAN - 1"=50'
PROFILE HORIZ. - 1"=50'
PROFILE VERT. - 1"=5'
CROSS SECTIONS - 1"=10'



FULL SIZE PLANS HAVE BEEN PREPARED USING STANDARD
ENGINEERING SCALES, REDUCED SIZED PLANS WILL NOT
CONFORM TO STANDARD SCALES, IN MAKING MEASUREMENTS
ON REDUCED PLANS, THE ABOVE SCALES MAY BE USED.

J. U. L. I. E.
JOINT UTILITY LOCATION INFORMATION FOR EXCAVATION
1-800-892-0123 or 811

CONTRACT NO. 63855



LOCATION MAP

GROSS LENGTH=4,441.25 FEET=0.84 MILES
NET LENGTH=4,441.25 FEET=0.84 MILES

PROGRAM AND OFFICE ENGINEER: CHARLES F. RIDDLE, PE (847)705-4406 SCHAUMBURG, IL
CONSULTANTS: ROBINSON ENGINEERING, LTD. 708-331-6700

SUMMARY OF QUANTITIES					CONSTRUCTION TYPE CODE
S.I.	CODE NO.	PAY ITEM	UNIT	TOTAL QUANTITY	0021
	20100110	TREE REMOVAL (6 TO 15 UNITS DIAMETER)	UNIT	47	47
	20100210	TREE REMOVAL (OVER 15 UNITS DIAMETER)	UNIT	24	24
	20200100	EARTH EXCAVATION	CU YD	809	809
*	21101615	TOPSOIL FURNISH AND PLACE, 4"	SQ YD	1877	1877
*	25000400	NITROGEN FERTILIZER NUTRIENT	POUND	25	25
*	25000500	PHOSPHORUS FERTILIZER NUTRIENT	POUND	25	25
*	25000600	POTASSIUM FERTILIZER NUTRIENT	POUND	25	25
*	25200100	SODDING	SQ YD	1877	1877
*	25200200	SUPPLEMENTAL WATERING	UNIT	15	15
	31101200	SUB-BASE GRANULAR MATERIAL, TYPE B 4"	SQ YD	1940	1940
	40201000	AGGREGATE FOR TEMPORARY ACCESS	TON	130	130
	42300300	PORTLAND CEMENT CONCRETE DRIVEWAY PAVEMENT 7 INCH	SQ YD	41	41
	42400200	PORTLAND CEMENT CONCRETE SIDEWALK 5 INCH	SQ FT	15715	15715
	42400400	PORTLAND CEMENT CONCRETE SIDEWALK 7 INCH	SQ FT	1715	1715
	42400800	DETECTABLE WARNINGS	SQ FT	192	192
	44000200	DRIVEWAY PAVEMENT REMOVAL	SQ YD	634	634
	44000300	CURB REMOVAL	FOOT	50	50
	44000600	SIDEWALK REMOVAL	SQ FT	965	965
	44201737	CLASS D PATCHES, TYPE I, 8 INCH	SQ YD	33	33
*	56500600	DOMESTIC WATER SERVICE BOXES TO BE ADJUSTED	EACH	5	5
*	60265700	VALVE VAULTS TO BE ADJUSTED	EACH	1	1
*	60266600	VALVE BOXES TO BE ADJUSTED	EACH	6	6
	60600605	CONCRETE CURB, TYPE B	FOOT	50	50
	67100100	MOBILIZATION	L SUM	1	1

* - INDICATES SPECIALTY ITEMS
~ - INDICATES SPECIAL PROVISIONS

SUMMARY OF QUANTITIES					CONSTRUCTION TYPE CODE
S.I.	CODE NO.	PAY ITEM	UNIT	TOTAL QUANTITY	0021
	70102620	TRAFFIC CONTROL AND PROTECTION, STANDARD 701501	L SUM	1	1
	70102635	TRAFFIC CONTROL AND PROTECTION, STANDARD 701701	L SUM	1	1
	70102640	TRAFFIC CONTROL AND PROTECTION, STANDARD 701801	L SUM	1	1
	72400100	REMOVE SIGN PANEL ASSEMBLY - TYPE A	EACH	5	5
	72400500	RELOCATE SIGN PANEL ASSEMBLY - TYPE A	EACH	5	5
	72800100	TELESCOPING STEEL SIGN SUPPORT	FOOT	43	43
	72900100	METAL POST - TYPE A	FOOT	26	26
~	Z0004562	COMBINATION CONCRETE CURB AND GUTTER REMOVAL AND REPLACEMENT	FOOT	150	150
~	Z0018905	DRILL AND GROUT BARS	EACH	195	195
~	Z0064560	SEGMENTAL BLOCK RETAINING WALL	SQ FT	394	394
~	Z0066600	STABILIZED DRIVEWAYS 8"	SQ YD	352	352
*	A2004816	TREE, GLEDITSIA TRIACANTHOS INERMIS SKYLINE (SKYLINE THORNLESS COMMON HONEYLOCUST), 2" CALIPER, BALLED AND BURLAPPED	EACH	2	2
*	A2008116	TREE, TILIA CORDATA GREENSPIRE (GREENSPIRE LITTLE LEAF LINDEN), 2" CALIPER, BALLED AND BURLAPPED	EACH	2	2
*	B2004484	TREE, PYRUS CALLERYANA AUTMUN BLAZE (AUTUMN BLAZE CALLERY PEAR), 3" CALIPER, TREE FORM, BALLED AND BURLAPPED	EACH	3	3
*	B2006316	TREE, SYRINGA RETICULATA IVORY SILK (IVORY SILK JAPANESE TREE LILAC), 2" CALIPER, BALLED AND BURLAPPED	EACH	2	2

* - INDICATES SPECIALTY ITEMS
~ - INDICATES SPECIAL PROVISIONS

GENERAL NOTES

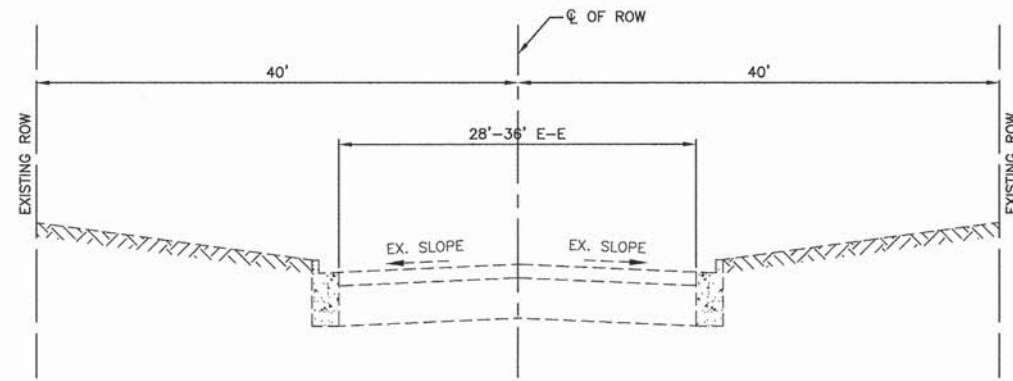
- BEFORE STARTING ANY EXCAVATION THE CONTRACTOR SHALL CALL "J.U.L.I.E." AT (800) 892-0123 AND (312) 744-7000 FOR FIELD LOCATIONS OF BURIED ELECTRIC, TELEPHONE AND GAS UTILITIES. (48 HOUR NOTIFICATION REQUIRED)
- UTILITIES INDICATED ON THE PLANS ARE PROVIDED FOR THE CONTRACTORS USE AND ARE BASED UPON INFORMATION AVAILABLE AT THE TIME OF THE ADVERTISEMENT FOR BIDS. THE OWNER AND ENGINEER DO NOT GUARANTEE THE ACCURACY OF UTILITY INFORMATION.
- IT SHALL BE THE CONTRACTOR'S RESPONSIBILITY TO VERIFY ALL DIMENSIONS AND CONDITIONS EXISTING IN THE FIELD PRIOR TO CONSTRUCTION AND ORDERING OF MATERIALS.
- THE REMOVAL AND/OR REPLACEMENT OF ANY DRIVEWAYS, PAVEMENT, CURB, SIDEWALK, ETC. SHALL BE ACCOMPLISHED BY MEANS OF A SAW CUT JOINT, AT THE DIRECTION OF THE ENGINEER. THIS WORK WILL NOT BE PAID FOR SEPARATELY, BUT SHALL BE INCLUDED IN THE UNIT PRICE FOR THE VARIOUS ITEMS.
- ANY LOOSE MATERIAL DEPOSITED IN THE FLOW LINE OF DITCHES, GUTTERS OR OTHER DRAINAGE STRUCTURES SHALL BE REMOVED BY THE END OF EACH DAY BY THE CONTRACTOR AT THEIR EXPENSE.
- PLANTER BLOCKS THAT ARE INDICATED TO BE REMOVED, OR FALL WITHIN THE PROPOSED SIDEWALK LIMITS, SHALL BE PLACED ON THE RIGHT-OF-WAY FOR THE PROPERTY OWNER TO USE. THIS WORK WILL NOT BE PAID FOR SEPARATELY BUT SHALL BE INCLUDED IN THE UNIT PRICE FOR EARTH EXCAVATION.
- SIX INCH BY SIX INCH BLOCK-OUTS SHALL BE PROVIDED FOR ANY POST MAIL BOX. THIS WORK WILL NOT BE PAID FOR SEPARATELY BUT SHALL BE INCLUDED IN THE UNIT PRICE FOR PORTLAND CEMENT CONCRETE SIDEWALK, 5 INCH.
- EXISTING TREES 6 INCH OR SMALLER, IF IN CONFLICT AND DETERMINED BY THE ENGINEER, SHALL BE REMOVED AND STORED ON THE PARKWAY FOR THE OWNER TO USE AS THEY DETERMINE. THE WORK WILL NOT BE PAID FOR SEPARATELY BUT SHALL BE INCLUDED IN THE UNIT PRICE FOR TREE REMOVAL, 6 TO 15 UNITS DIAMETER..

FILE NAME = 12261_02-QUAN-01 - P01

USER NAME =	DESIGNED -- TRL	REVISED --
	CHECKED -- TRL	REVISED --
PLOT SCALE =	DRAWN -- RG / PS	REVISED --
PLOT DATE = 6-17-13	CHECKED -- AG	REVISED --

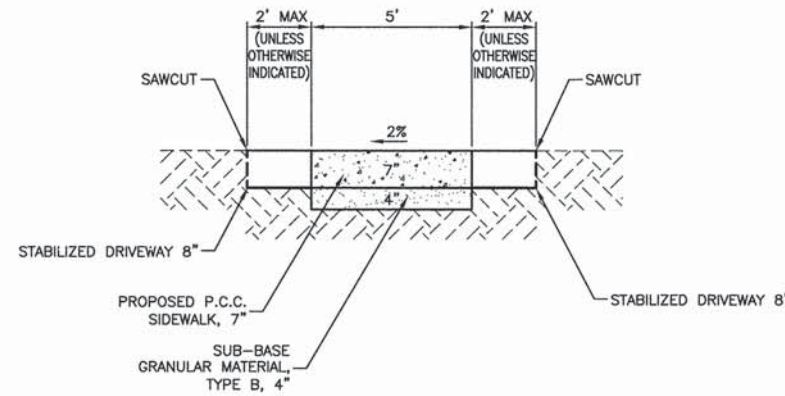
STATE OF ILLINOIS
DEPARTMENT OF TRANSPORTATION

91ST STREET SIDEWALK CONSTRUCTION SUMMARY OF QUANTITIES		F.A. RTE.	SECTION	COUNTY	TOTAL SHEETS	SHEET NO.
SCALE: NONE		SHEET NO. 2	12-00063-00-SW	COOK	15	2
SHEET NO. 2 OF 15 SHEETS		STA.	FED. ROAD DIST. NO. 1 ILLINOIS		CONTRACT NO. 63855	
TO STA.		FED. AID PROJECT: SRTS-4009(176)				

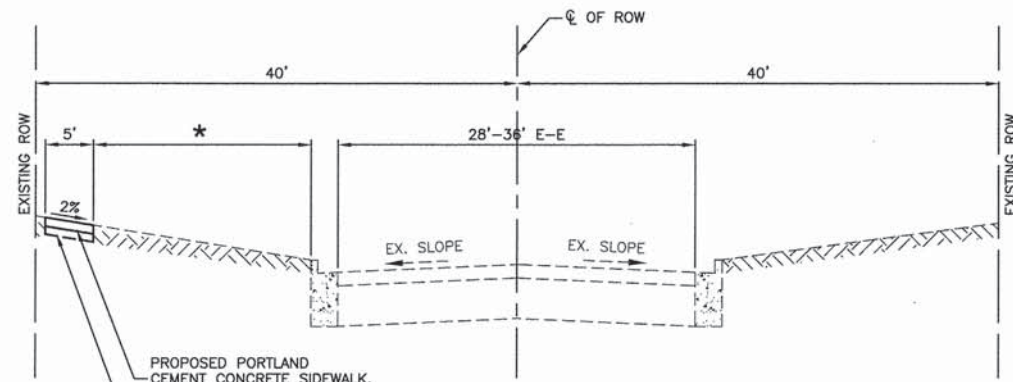


EXISTING TYPICAL SECTION

STA 5+13 TO STA 49+54.25, 91ST STREET

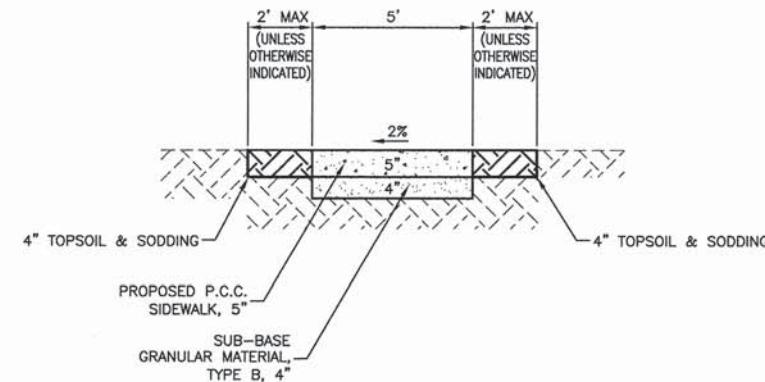


TYPICAL SIDEWALK DETAIL THROUGH DRIVEWAY

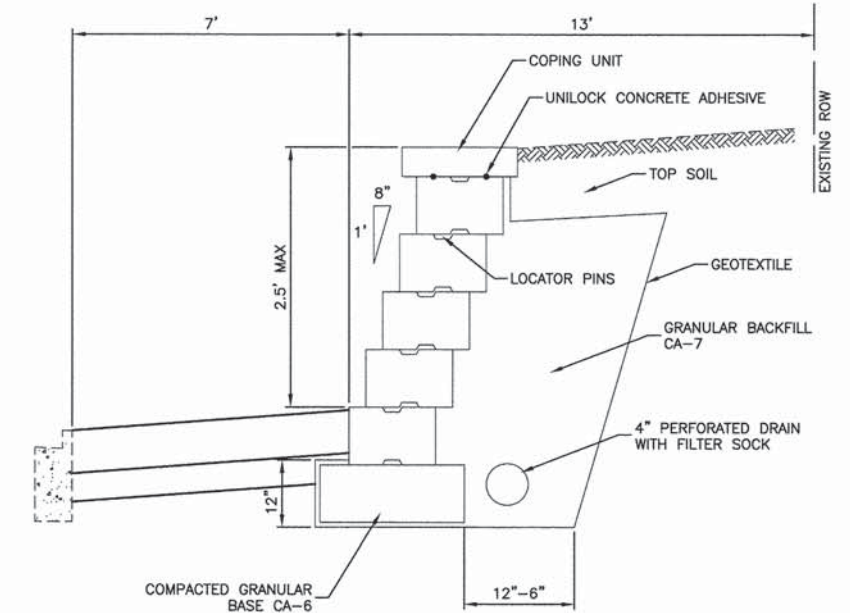


PROPOSED TYPICAL SECTION

SIDEWALK LOCATED AWAY FROM CURB
 STA 5+13 TO STA 13+75, 91ST STREET
 STA 22+16 TO STA 27+40, 91ST STREET
 STA 30+41 TO STA 49+54.25, 91ST STREET



TYPICAL SIDEWALK DETAIL THROUGH PARKWAY



RETAINING WALL TYPICAL SECTION

COPING UNIT: 12"x3"x12"
 LARGE WEDGE: 16"x6"x9"

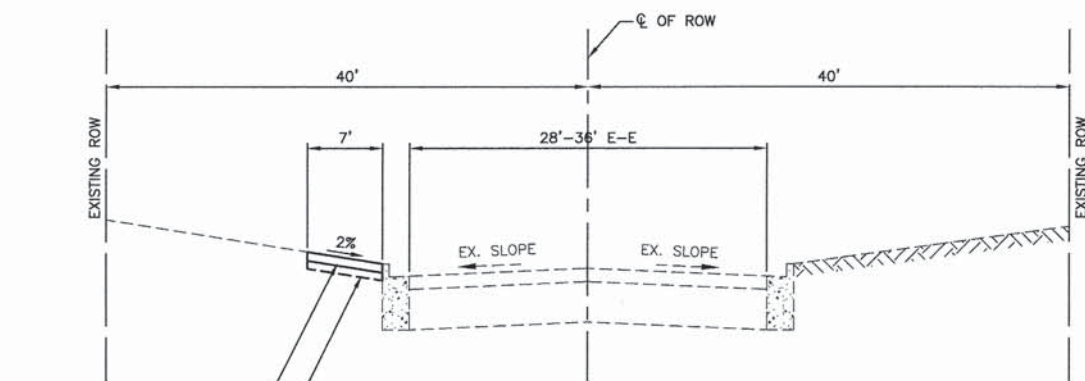
HOT-MIX ASPHALT MIXTURE REQUIREMENTS

ITEM	AIR VOIDS @ Ndes
DRIVEWAYS	
HOT-MIX ASPHALT SURFACE COURSE, MIX D, N50, (IL 9.5mm) 2"	4% @ 50 GYR
PATCHING - CURB PATCHES	
CLASS D PATCHES, TYPE I, (HMA BINDER IL-19mm) 6" (2 LIFTS)	4% @ 70 GYR
HOT-MIX ASPHALT SURFACE COURSE, MIX D, N50 (IL-9.5mm) 2"	4% @ 50 GYR

EARTHWORK SCHEDULE

LOCATION	EARTH EXCAVATION	EARTH EXCAVATION ADJUSTED FOR SHRINKAGE	EMBANKMENT	EARTHWORK BALANCE WASTE (+)OR SHORTAGE(-)
	CUBIC YARD	CUBIC YARD	CUBIC YARD	CUBIC YARD
STA 5+13 TO STA 15+00	78	0	0	78
STA 15+00 TO STA 25+00	250	0	0	250
STA 25+00 TO STA 35+00	315	0	0	315
STA 35+00 TO STA 49+54.25	166	0	0	166
TOTAL	809	0	0	809

NOTES:
 THE UNIT WEIGHT USED TO CALCULATE ALL HMA SURFACE MIXTURE QUANTITIES IS 112 LBS/SY/IN.
 THE 'AC TYPE' FOR POLYMERIZED HMA MIXES SHALL BE 'SBS/SBR PG 76-22' AND FOR NON-POLYMERIZED HMA THE 'AC-TYPE' SHALL BE 'PG 64-22' UNLESS MODIFIED BY DISTRICT ONE SPECIAL PROVISIONS. FOR USE OF RECYCLED MATERIALS SEE SPECIAL PROVISIONS.



PROPOSED TYPICAL SECTION

SIDEWALK ADJACENT TO CURB
 STA 13+75 TO STA 22+16, 91ST STREET
 STA 27+40 TO STA 30+41, 91ST STREET

FILE NAME = 12261_02-TYPX01 - P01

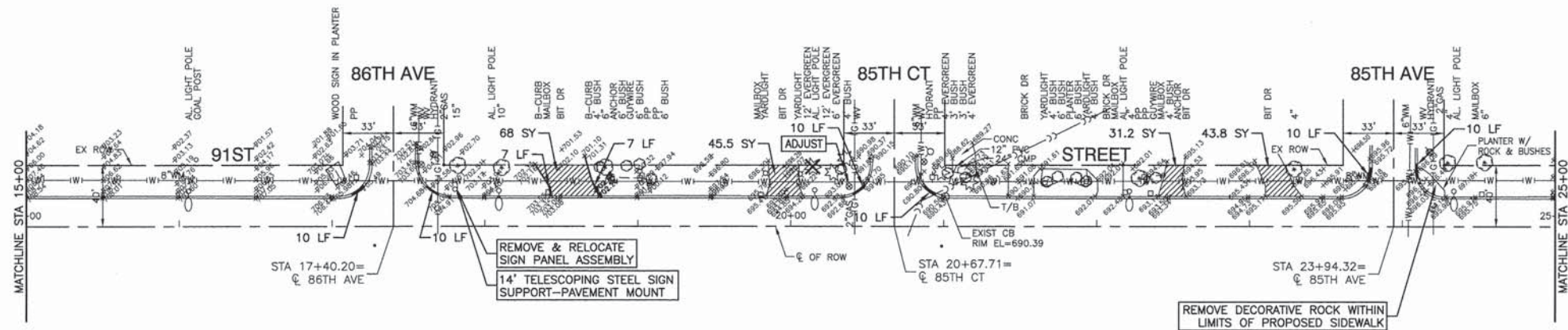
USER NAME =	DESIGNED -- TRL	REVISIONS --
PLOT SCALE =	CHECKED -- TRL	REVISIONS --
PLOT DATE = 6-17-13	DRAWN -- RG / PS	REVISIONS --
	CHECKED -- AG	REVISIONS --

STATE OF ILLINOIS
 DEPARTMENT OF TRANSPORTATION

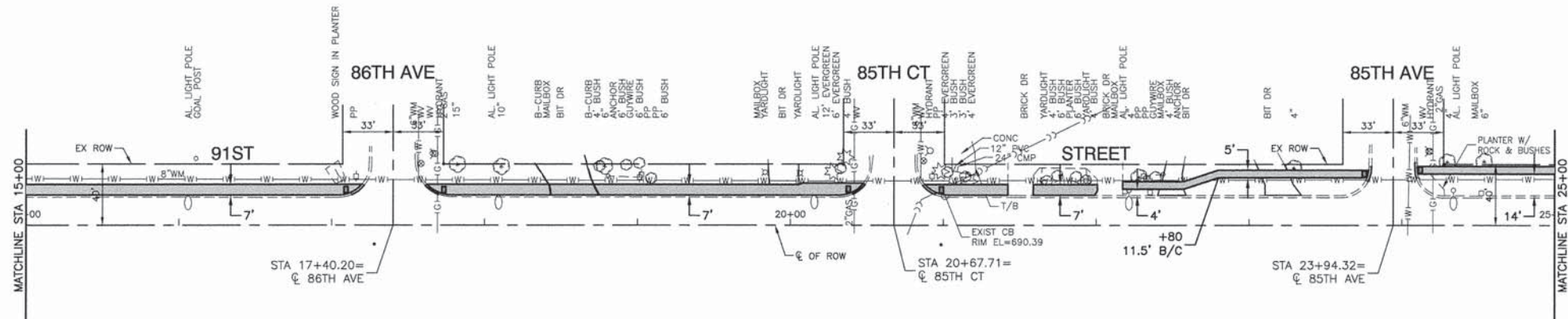
91ST STREET
 SIDEWALK CONSTRUCTION
 TYPICAL CROSS SECTIONS

F.A. RTE.	SECTION	COUNTY	TOTAL SHEETS	SHEET NO.
	12-00063-00-SW	COOK	15	3
FED. ROAD DIST. NO. 1 ILLINOIS			CONTRACT NO. 63855	
FED. AID PROJECT SRTS-4009(176)				

SCALE: NONE SHEET NO. 3 OF 15 SHEETS STA. TO STA.



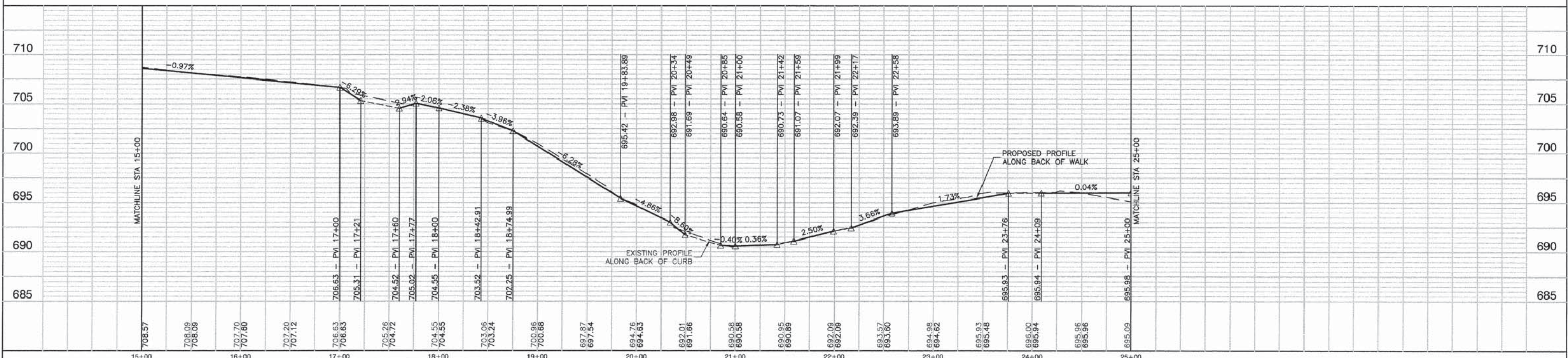
EXISTING CONDITIONS

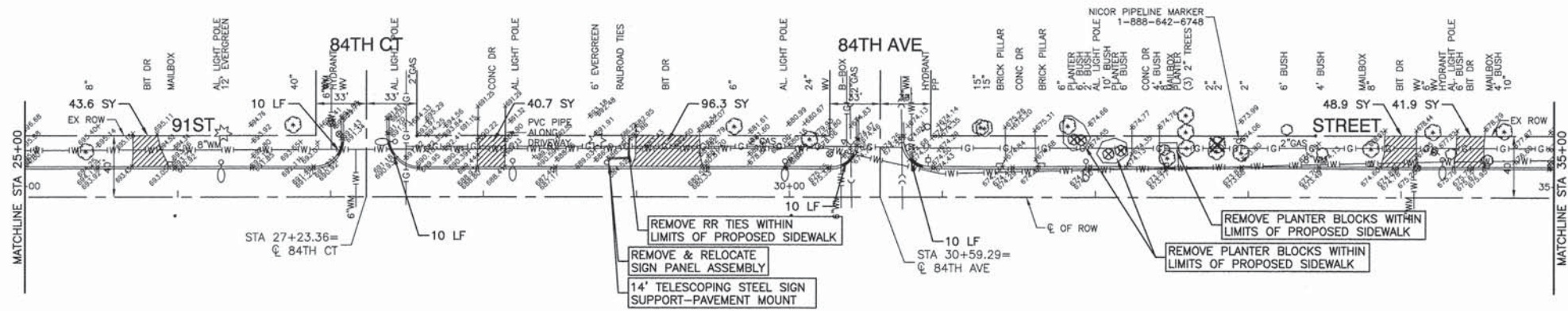


PROPOSED IMPROVEMENT

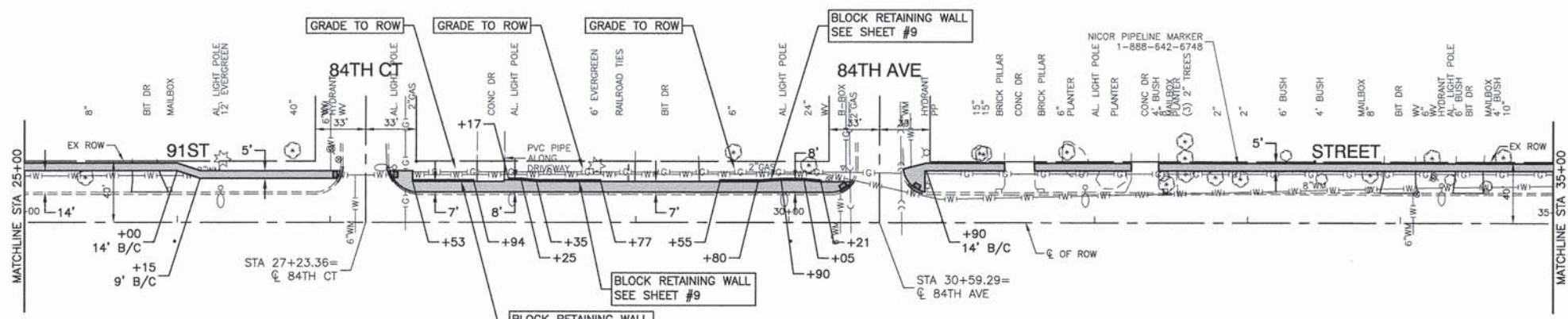


- LEGEND**
- SIDEWALK REMOVAL
 - DRIVEWAY PAVEMENT REMOVAL
 - PORTLAND CEMENT CONCRETE SIDEWALK, 5" (7" THROUGH DRIVEWAYS)
AGGREGATE BASE COURSE, TYPE B, 4"
 - COMBINATION CONCRETE CURB & GUTTER /
CONCRETE CURB REMOVAL & REPLACEMENT
 - TREE REMOVAL
 - DETECTABLE WARNINGS



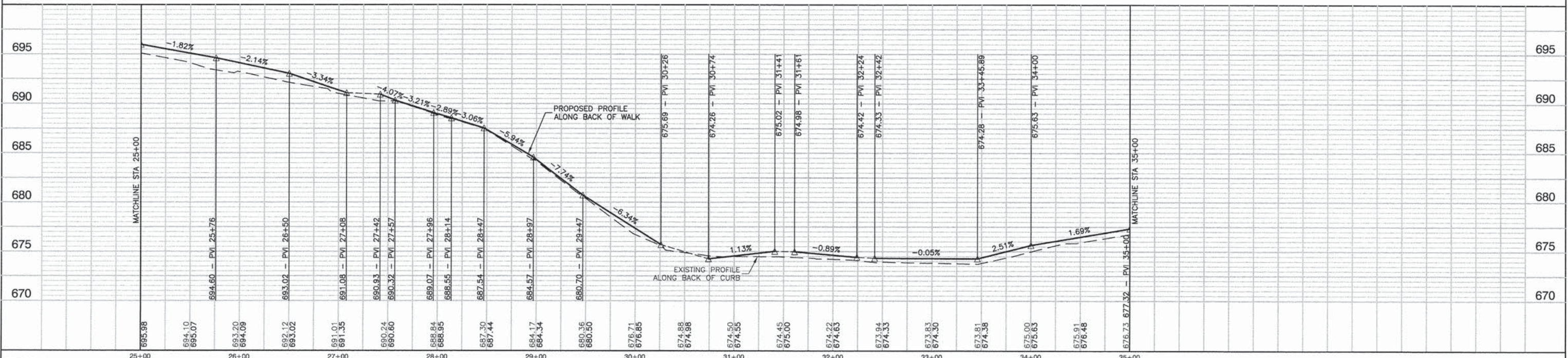


EXISTING CONDITIONS

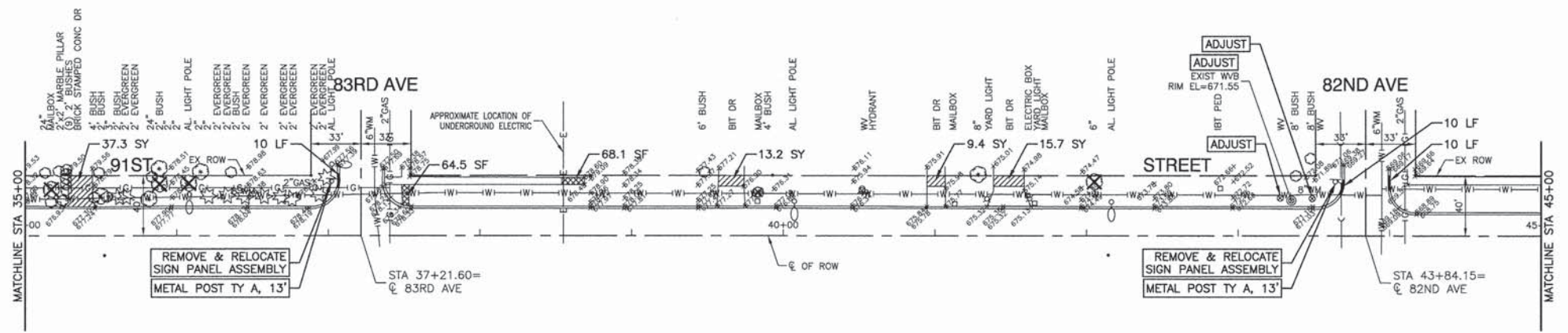


PROPOSED IMPROVEMENT

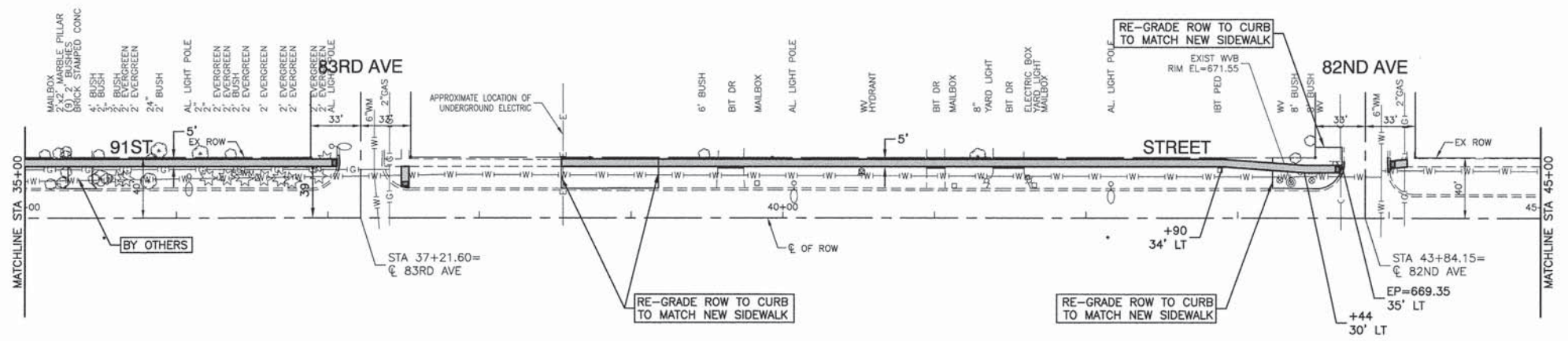
- LEGEND**
- SIDEWALK REMOVAL
 - DRIVEWAY PAVEMENT REMOVAL
 - PORTLAND CEMENT CONCRETE SIDEWALK, 5" (7" THROUGH DRIVEWAYS) AGGREGATE BASE COURSE, TYPE B, 4"
 - COMBINATION CONCRETE CURB & GUTTER / CONCRETE CURB REMOVAL & REPLACEMENT
 - TREE REMOVAL
 - DETECTABLE WARNINGS



FILE NAME = 12261_02-PLPR-01 - IDOT P03	USER NAME =	DESIGNED =	TRL	REVISED =		STATE OF ILLINOIS DEPARTMENT OF TRANSPORTATION	91ST STREET SIDEWALK CONSTRUCTION PLAN & PROFILE				F.A. RTE.	SECTION	COUNTY	TOTAL SHEETS	SHEET NO.
	PLOT SCALE =	CHECKED =	TRL	REVISED =			SCALE: H 1"=50' V 1"=5'	SHEET NO. 6 OF 15 SHEETS				12-00063-00-SW	COOK	15	6
	PLOT DATE = 6-17-13	CHECKED =	LTL / PS	REVISED =			STA. 25+00 TO STA. 35+00	FED. ROAD DIST. NO. 1				ILLINOIS	FED. AID PROJECT SRTS-4009(176)		
			AG	REVISED =				CONTRACT NO. 63855							

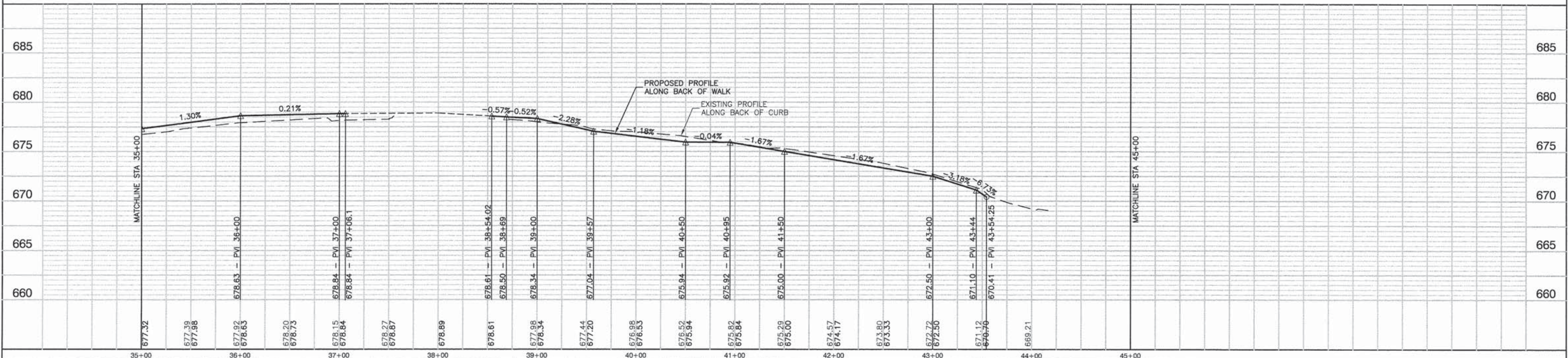


EXISTING CONDITIONS

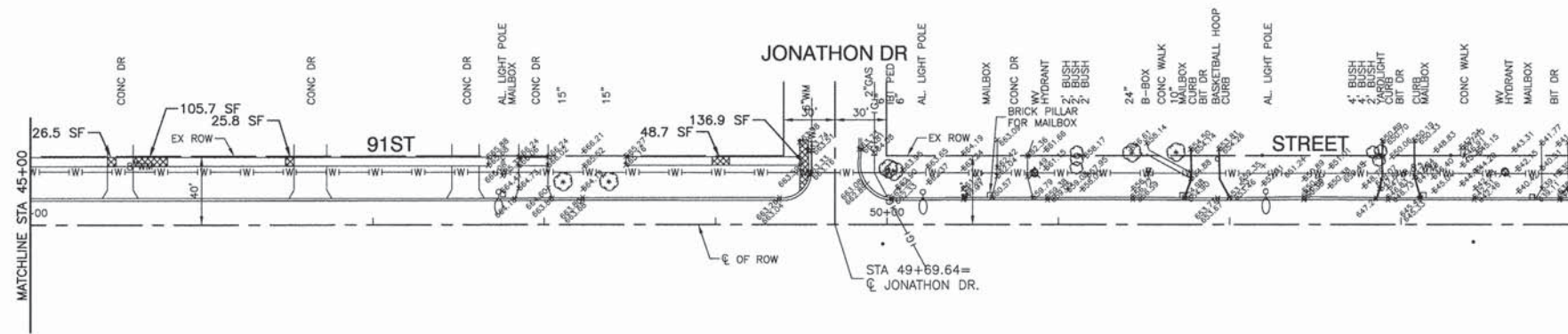


PROPOSED IMPROVEMENT

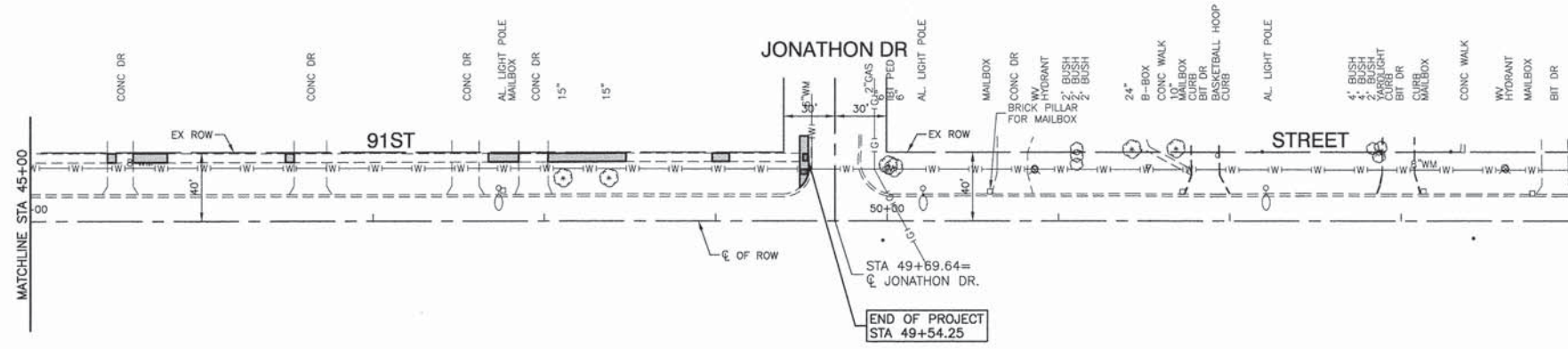
- LEGEND**
- SIDEWALK REMOVAL
 - DRIVEWAY PAVEMENT REMOVAL
 - PORTLAND CEMENT CONCRETE SIDEWALK, 5" (7" THROUGH DRIVEWAYS) AGGREGATE BASE COURSE, TYPE B, 4"
 - COMBINATION CONCRETE CURB & GUTTER / CONCRETE CURB REMOVAL & REPLACEMENT
 - TREE REMOVAL
 - DETECTABLE WARNINGS



FILE NAME = 12261_02-PLPR-01 - IDOT P04	USER NAME =	DESIGNED -- TRL	REVISED --	STATE OF ILLINOIS DEPARTMENT OF TRANSPORTATION	91ST STREET SIDEWALK CONSTRUCTION PLAN & PROFILE		F.A. RTE.	SECTION	COUNTY	TOTAL SHEETS	SHEET NO.
	PLOT SCALE =	CHECKED -- TRL	REVISED --		SCALE: H 1"=50' V 1"=5'			12-00063-00-SW	COOK	15	7
	PLOT DATE = 6-17-13	DRAWN -- LTL / PS	REVISED --		SHEET NO. 7 OF 15 SHEETS						
		CHECKED -- AG	REVISED --		STA. 35+00 TO STA. 45+00						
							CONTRACT NO. 63855		FED. ROAD DIST. NO. 1 ILLINOIS FED. AID PROJECT SRTS-4009(176)		

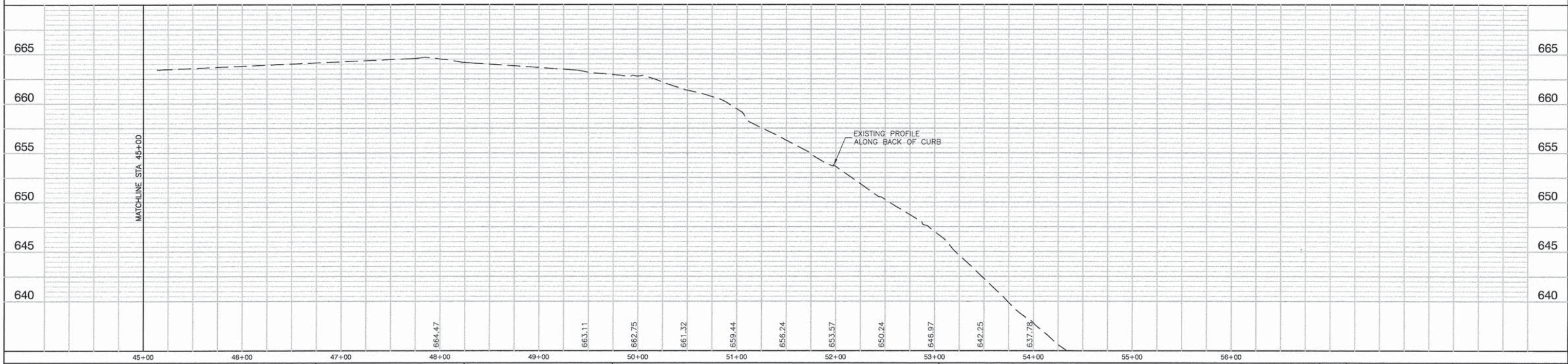


EXISTING CONDITIONS

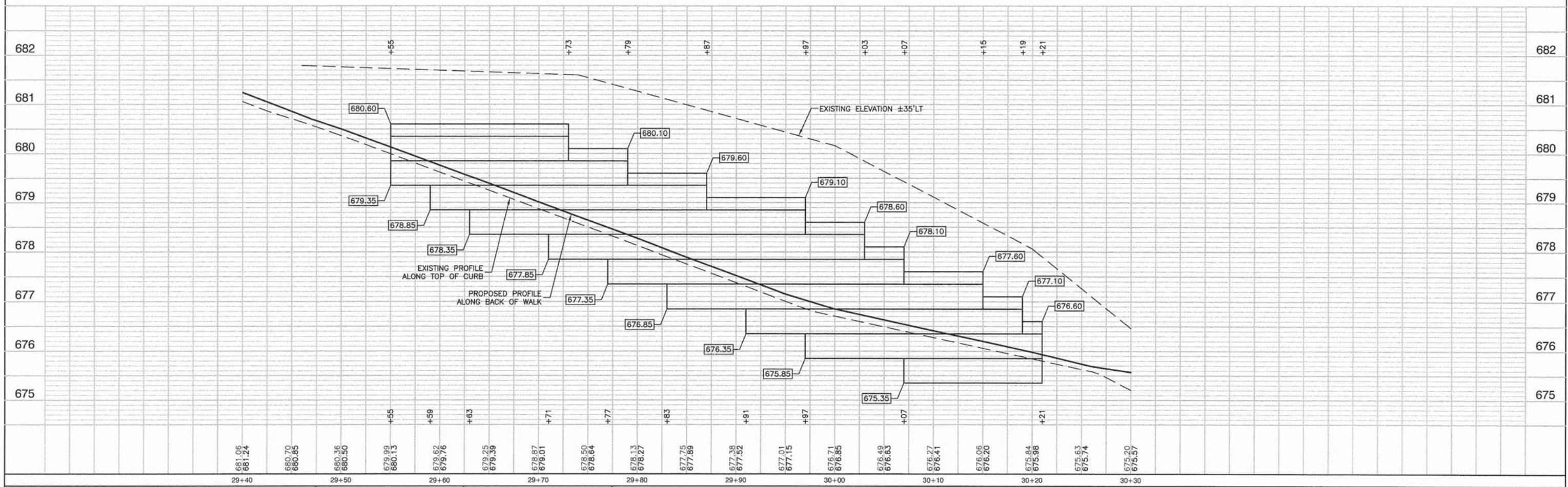
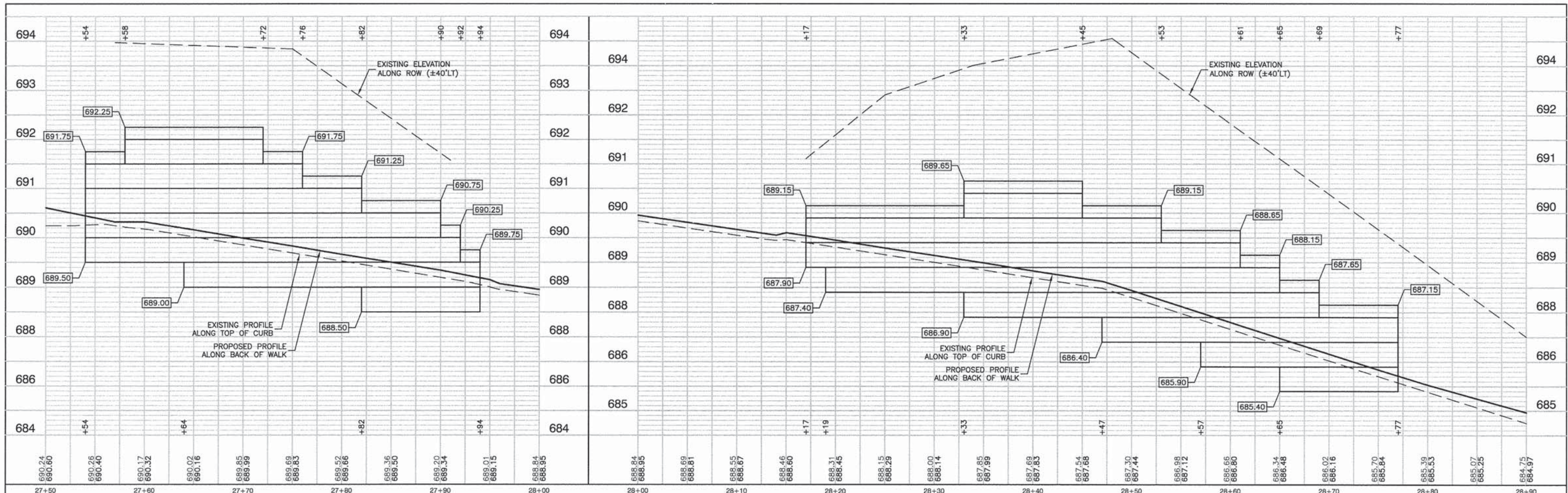


PROPOSED IMPROVEMENT

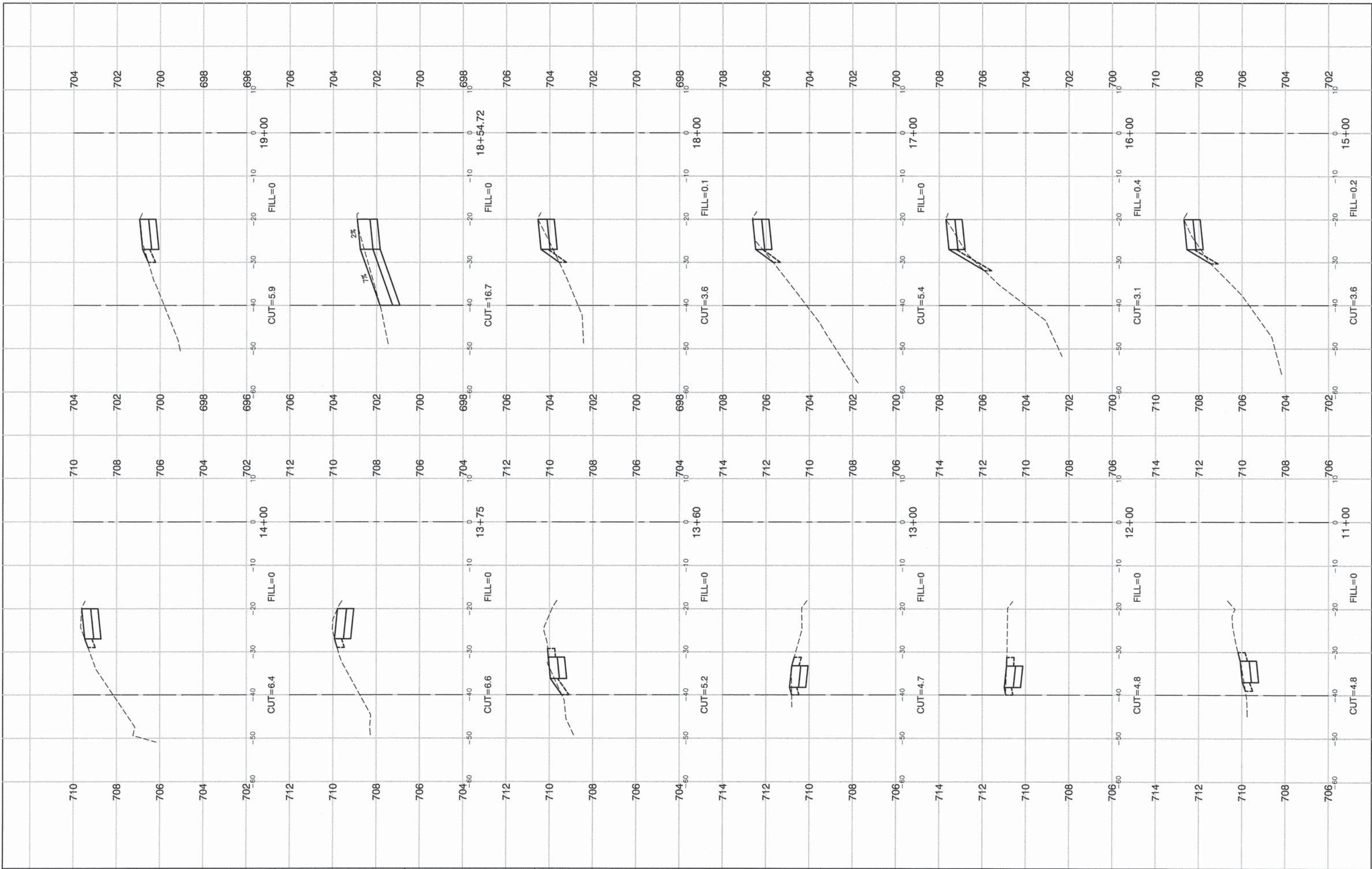
- LEGEND**
- SIDEWALK REMOVAL
 - DRIVEWAY PAVEMENT REMOVAL
 - PORTLAND CEMENT CONCRETE SIDEWALK, 5" (7" THROUGH DRIVEWAYS)
AGGREGATE BASE COURSE, TYPE B, 4"
 - COMBINATION CONCRETE CURB & GUTTER /
CONCRETE CURB REMOVAL & REPLACEMENT
 - TREE REMOVAL
 - DETECTABLE WARNINGS



FILE NAME = 12261_02-PLPR-01 - IDOT P05	USER NAME =	DESIGNED -- TRL	REVISED --	STATE OF ILLINOIS DEPARTMENT OF TRANSPORTATION	91ST STREET SIDEWALK CONSTRUCTION PLAN & PROFILE		F.A. RTE.	SECTION	COUNTY	TOTAL SHEETS	SHEET NO.
	PLOT SCALE =	CHECKED -- TRL	REVISED --		SCALE: H 1"=50' V 1"=5'		12-00063-00-SW	COOK	15	8	
	PLOT DATE = 6-17-13	DRAWN -- LTL / PS	REVISED --		SHEET NO. 8 OF 15 SHEETS	STA. 45+00 TO STA.	CONTRACT NO. 63855				
		CHECKED -- AG	REVISED --		FED. ROAD DIST. NO. 1	ILLINOIS	FED. AID PROJECT SRTS-4009(176)				



FILE NAME = 12261_02-WALL-01 - IDOT P01	USER NAME =	DESIGNED -- TRL	REVISED --	STATE OF ILLINOIS DEPARTMENT OF TRANSPORTATION	91ST STREET SIDEWALK CONSTRUCTION RETAINING WALL PROFILES				F.A. RTE.	SECTION	COUNTY	TOTAL SHEETS	SHEET NO.
	PLOT SCALE =	CHECKED -- TRL	REVISED --		SCALE: H 1"=5' V 1"=1'				12-00063-00-SW	COOK	15	9	
	PLOT DATE = 6-17-13	DRAWN -- PS	REVISED --		SHEET NO. 9 OF 15 SHEETS				CONTRACT NO.				
		CHECKED -- AG	REVISED --		STA. TO STA.				FED. ROAD DIST. NO. 1 ILLINOIS		FED. AID PROJECT SRTS-4009(176)		



FILE NAME = 12261_02.XSCT-01 - P01
 USER NAME =
 PLOT SCALE =
 PLOT DATE = 6-17-13

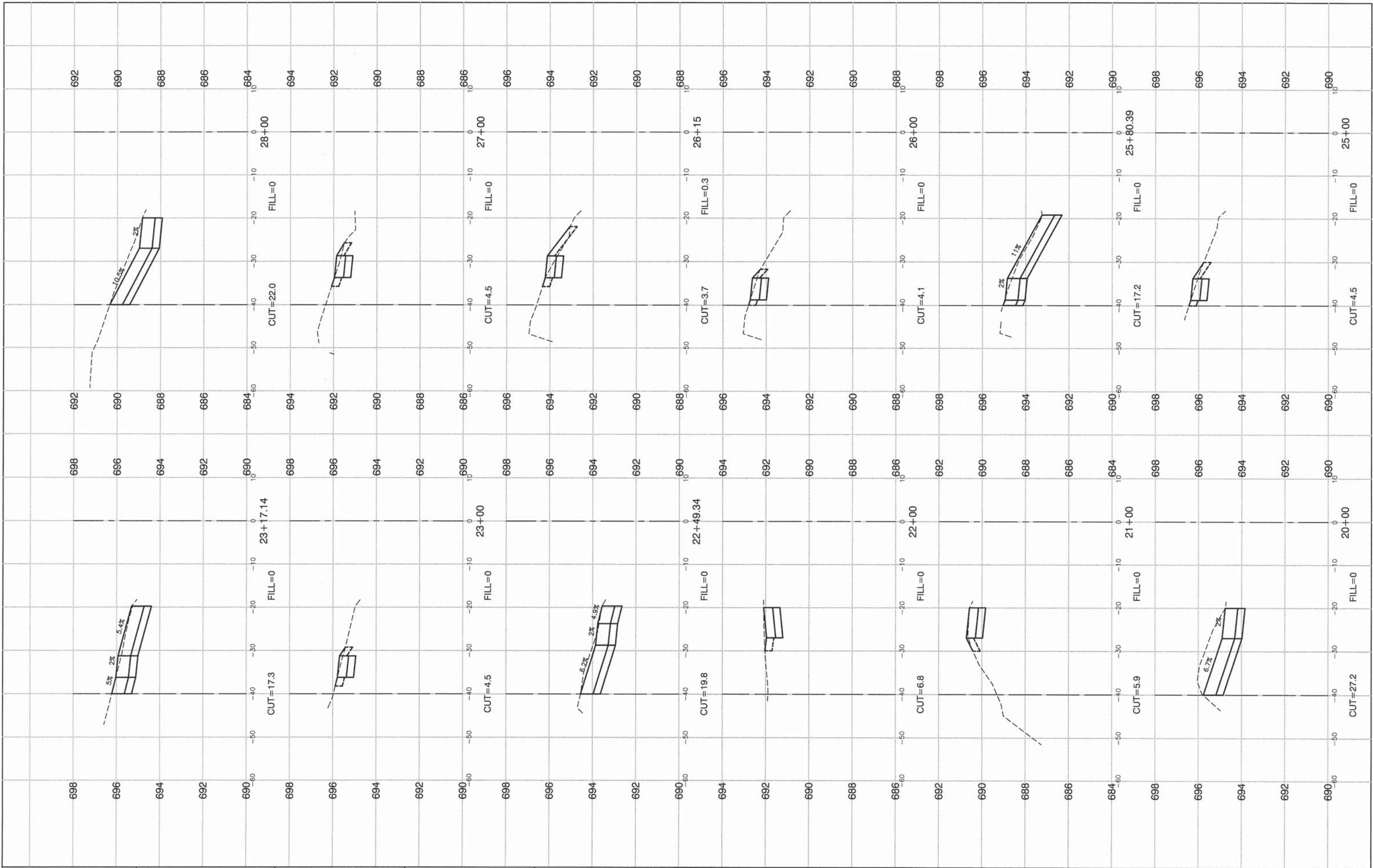
DESIGNED	TRL	REVIS	-
CHECKED	TRL	REVIS	-
DRAWN	PS	REVIS	-
CHECKED	AG	REVIS	-

**STATE OF ILLINOIS
 DEPARTMENT OF TRANSPORTATION**

**91ST STREET
 SIDEWALK CONSTRUCTION
 CROSS SECTIONS**

SCALE: H 1"=10' V 1"=2' SHEET NO. 10 OF 15 SHEETS STA. TO STA.

F.A. RTE.	SECTION	COUNTY	TOTAL SHEETS	SHEET NO.
	12-00063-00-SW	COOK	15	10
CONTRACT NO.				
FED. ROAD DIST. NO. 1 ILLINOIS FED. AID PROJECT SRTS-4009(176)				



FILE NAME = 12261_02-XSCT-01 - P02
 USER NAME =
 PLOT SCALE =
 PLOT DATE = 6-17-13

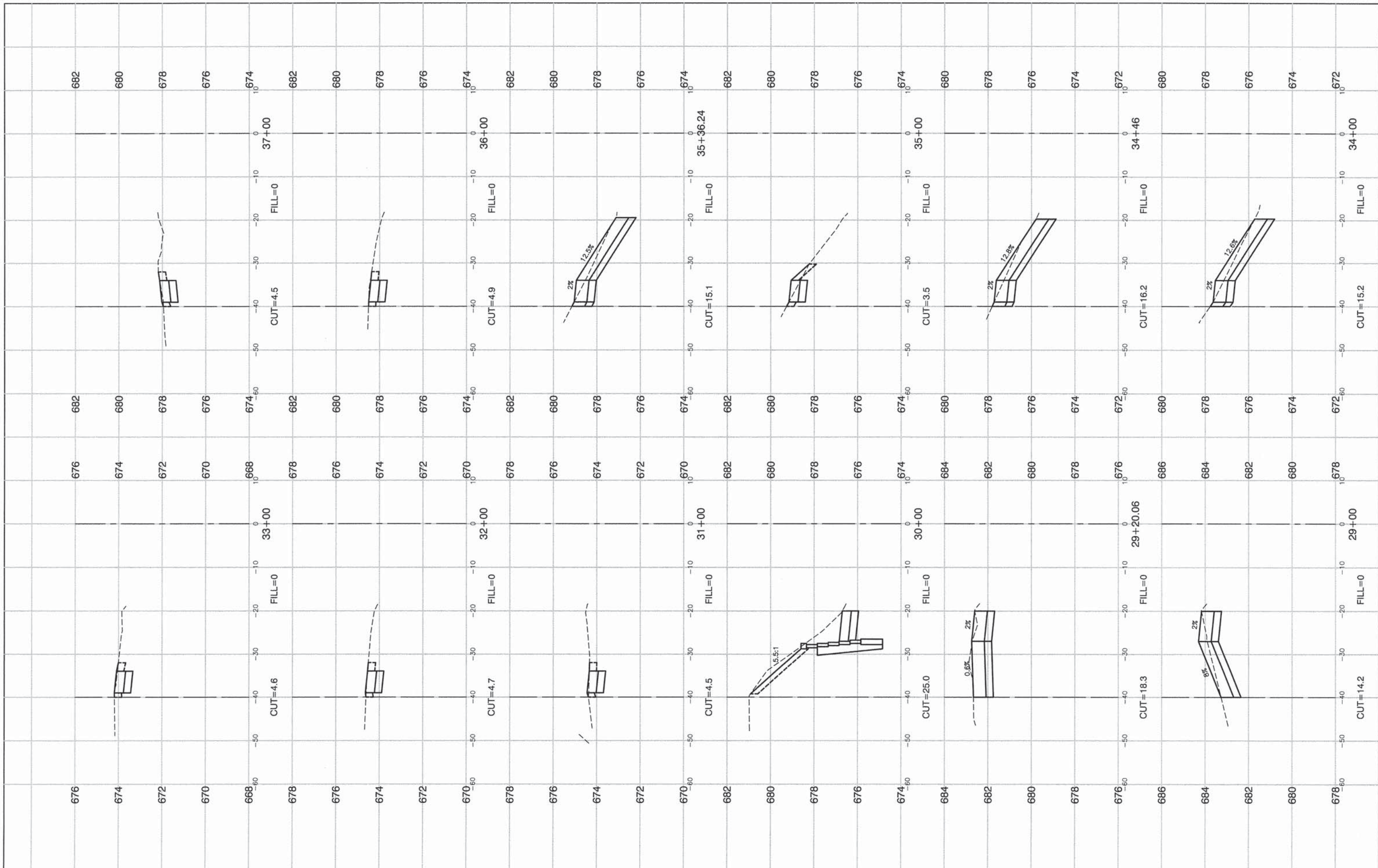
DESIGNED -	TRL	REVISED -	
CHECKED -	TRL	REVISED -	
DRAWN -	PS	REVISED -	
CHECKED -	AG	REVISED -	

**STATE OF ILLINOIS
 DEPARTMENT OF TRANSPORTATION**

**91ST STREET
 SIDEWALK CONSTRUCTION
 CROSS SECTIONS**

SCALE: H 1"=10' V 1"=2' SHEET NO. 11 OF 15 SHEETS STA. TO STA.

F.A. RTE.	SECTION	COUNTY	TOTAL SHEETS	SHEET NO.
	12-00063-00-SW	COOK	15	11
CONTRACT NO.				
FED. ROAD DIST. NO. 1 ILLINOIS FED. AID PROJECT SRTS-4009(176)				



FILE NAME = 12261_02.XSCT-01 - P03
 USER NAME =
 PLOT SCALE =
 PLOT DATE = 6-17-13

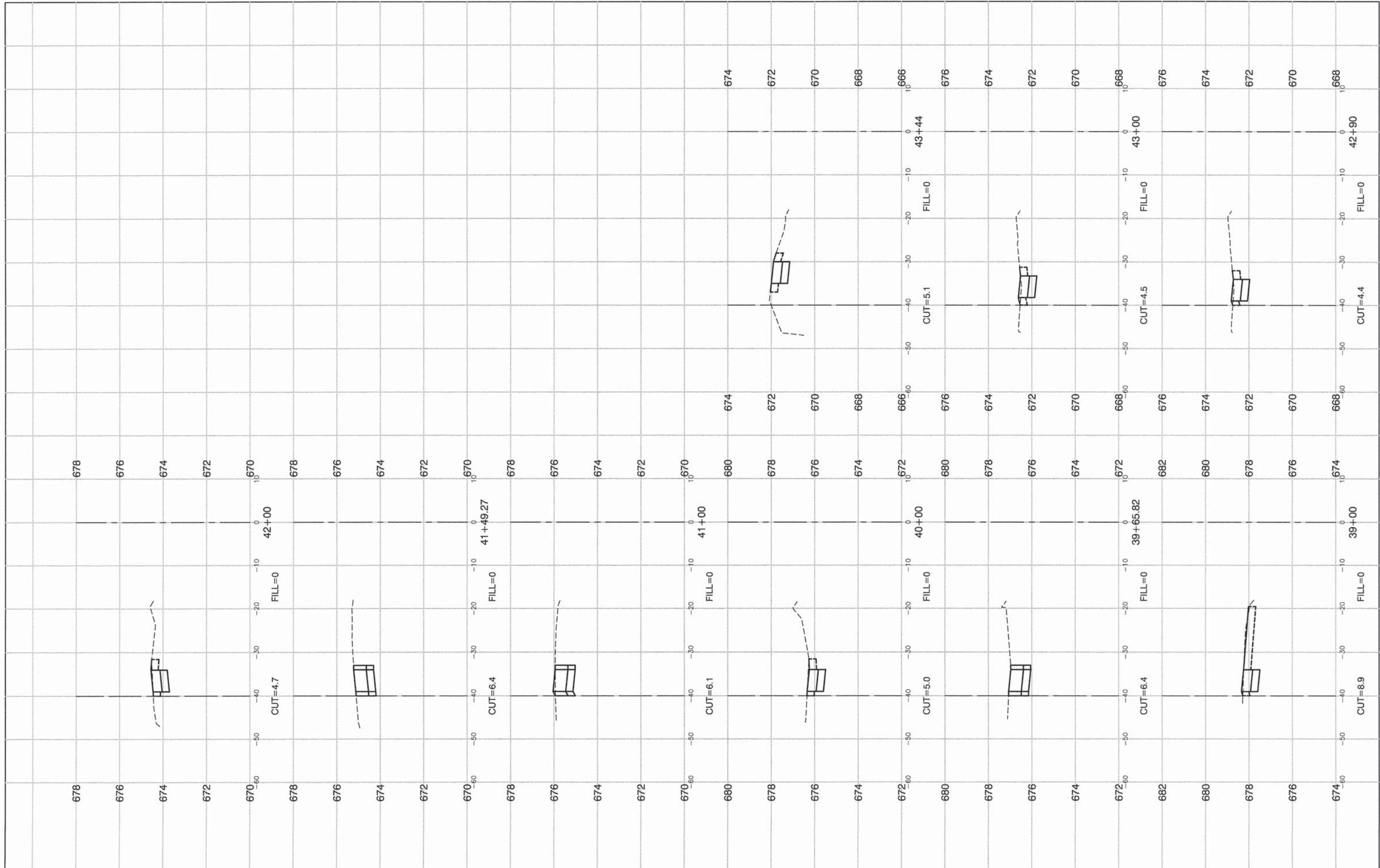
DESIGNED -	TRL	REVISED -	
CHECKED -	TRL	REVISED -	
DRAWN -	PS	REVISED -	
CHECKED -	AG	REVISED -	

**STATE OF ILLINOIS
 DEPARTMENT OF TRANSPORTATION**

**91ST STREET
 SIDEWALK CONSTRUCTION
 CROSS SECTIONS**

SCALE: H 1"=10' V 1"=2' SHEET NO. 12 OF 15 SHEETS STA. TO STA.

F.A. RATE	SECTION	COUNTY	TOTAL SHEETS	SHEET NO.
	12-00063-00-SW	COOK	15	12
CONTRACT NO.				
FED. ROAD DIST. NO. 1 ILLINOIS FED. AID PROJECT SRTS-4009(176)				



FILE NAME = 12261_02-XSCT-01 - P04
 USER NAME =
 PLOT SCALE =
 PLOT DATE = 6-17-13

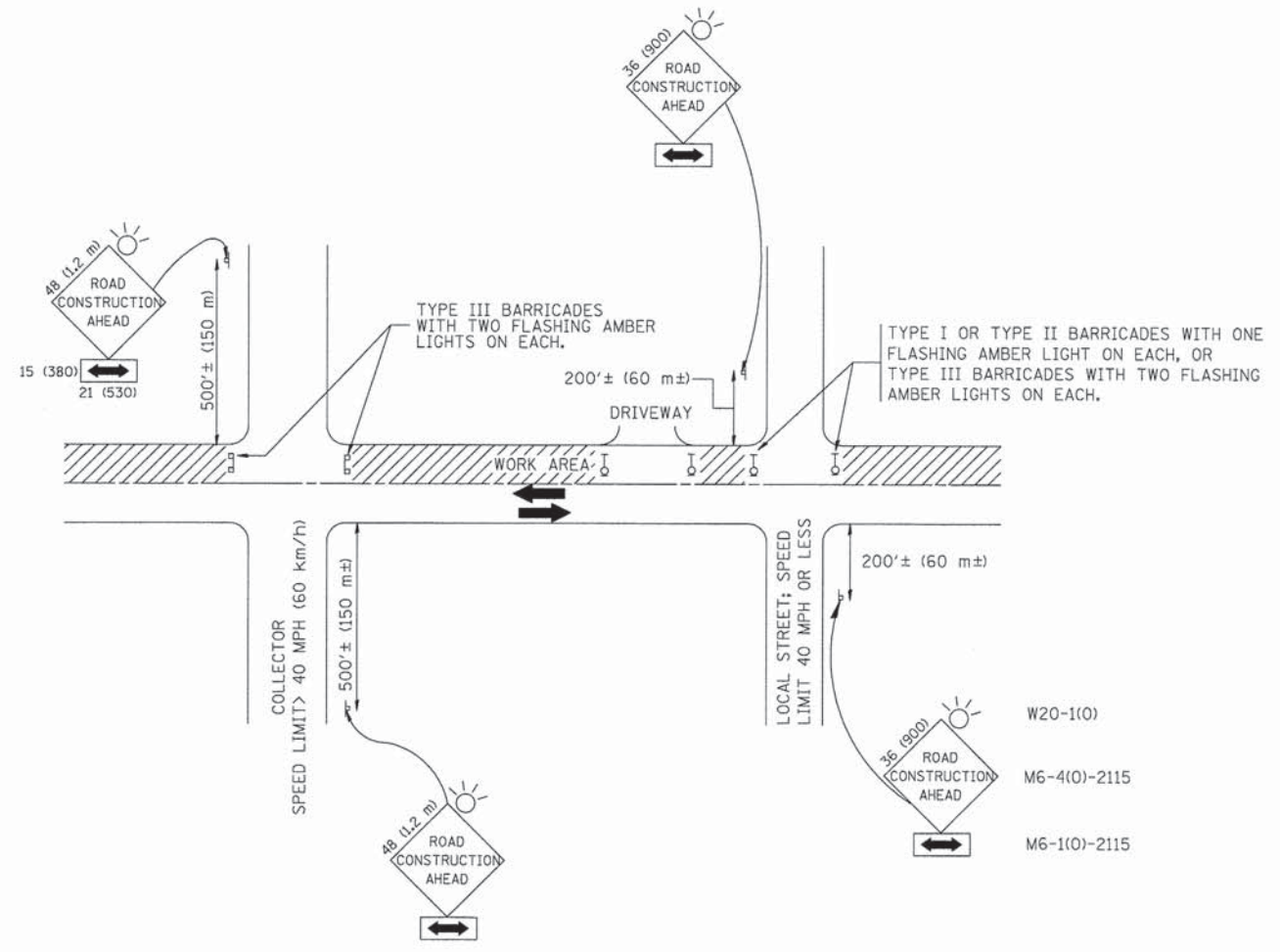
DESIGNED --	TRL	REVISED --	
CHECKED --	TRL	REVISED --	
DRAWN --	PS	REVISED --	
CHECKED --	AG	REVISED --	

**STATE OF ILLINOIS
 DEPARTMENT OF TRANSPORTATION**

**91ST STREET
 SIDEWALK CONSTRUCTION
 CROSS SECTIONS**

SCALE: H 1"=10' V 1"=2'
 SHEET NO. 13 OF 15 SHEETS
 STA. TO STA.

F.A. RTE.	SECTION	COUNTY	TOTAL SHEETS	SHEET NO.
	12-00063-00-SW	COOK	15	13
CONTRACT NO.				
FED. ROAD DIST. NO. 1 ILLINOIS FED. AID PROJECT SRTS-4009(176)				



TRAFFIC CONTROL AND PROTECTION FOR SIDE ROADS, INTERSECTIONS, AND DRIVEWAYS

NOTES:

A. FOR NO LANE RESTRICTION ON THE SIDE ROAD OR DRIVEWAYS

1. SIDE ROAD WITH A SPEED LIMIT OF 40 MPH (60 km/h) OR LESS AS SHOWN ON THE DRAWING AND AS DIRECTED BY THE ENGINEER:
 - a) ONE **ROAD CONSTRUCTION AHEAD** SIGN 36 x 36 (900x900) WITH A FLASHER AND FLAG MOUNTED ON IT APPROXIMATELY 200' (60 m) IN ADVANCE OF THE MAIN ROUTE.
 - b) THE CLOSED PORTION OF THE MAIN ROUTE SHALL BE PROTECTED BY BLOCKING WITH TYPE I, TYPE II OR TYPE III BARRICADES, 1/3 OF THE CROSS SECTION OF THE CLOSED PORTION.
2. SIDE ROAD WITH A SPEED LIMIT GREATER THAN 40 MPH (60 km/h) AS SHOWN ON THE DRAWING AND AS DIRECTED BY THE ENGINEER:
 - a) ONE **ROAD CONSTRUCTION AHEAD** SIGN 48 x 48 (1.2 m x 1.2 m) WITH A FLASHER MOUNTED ON IT APPROXIMATELY 500' (150 m) IN ADVANCE OF THE MAIN ROUTE.
 - b) THE CLOSED PORTION OF THE MAIN ROUTE SHALL BE PROTECTED BY BLOCKING WITH TYPE III BARRICADES, 1/2 OF THE CROSS SECTION OF THE CLOSED PORTION.
3. WHEN THE SIDE ROAD LIES BETWEEN THE BEGINNING OF THE MAINLINE SIGNING AND THE WORK ZONE, A SINGLE HEADED ARROW (M6-1) SHALL BE USED IN LIEU OF THE DOUBLE HEADED ARROW (M6-4).

B. FOR A LANE CLOSURE ON A SIDE ROAD OR DRIVEWAY:

USE APPLICABLE PORTIONS OF THE TYPICAL APPLICATION OF TRAFFIC CONTROL DEVICES (STD. 701501, STD. 701606 OR THE APPROPRIATE STANDARD). THE SPACING OF SIGNS AND BARRICADES SHALL BE ADJUSTED FOR FIELD CONDITIONS AS DIRECTED BY THE ENGINEER. THE DIRECTIONAL ARROW SHALL BE COVERED OR REMOVED WHEN NO LONGER CONSISTENT WITH THE SIDE ROAD LANE CLOSURE.

C. ADVANCE WARNING SIGNS ARE TO BE OMITTED ON DRIVEWAY UNLESS OTHERWISE NOTED.

D. THE TRAFFIC CONTROL AND PROTECTION FOR SIDE ROADS, INTERSECTIONS, AND DRIVEWAYS SHALL BE INCIDENTAL TO THE COST OF SPECIFIED TRAFFIC CONTROL STANDARDS OR ITEMS.

All dimensions are in millimeters (inches) unless otherwise shown.

FILE NAME = 12261_02-DTLS-01-TC10 - TC-10	USER NAME = gaglianobt	DESIGNED -- LHA	REVISED -- J. OBERLE 10-18-95
		CHECKED --	REVISED -- A. HOUSEH 03-06-96
	PLOT SCALE = 50.000' / IN.	DRAWN --	REVISED -- A. HOUSEH 10-15-96
	PLOT DATE = 1/4/2008	CHECKED -- 06-89	REVISED -- T. RAMMACHER 01-06-00

STATE OF ILLINOIS
DEPARTMENT OF TRANSPORTATION

TRAFFIC CONTROL AND PROTECTION FOR
SIDE ROADS, INTERSECTIONS, AND DRIVEWAYS

SCALE: SHEET NO. 14 OF 15 SHEETS STA. TO STA.

F.A. RTE.	SECTION	COUNTY	TOTAL SHEETS	SHEET NO.
	12-00063-00-SW	COOK	15	14
TC-10			CONTRACT NO. 63855	
FED. ROAD DIST. NO. 1 ILLINOIS FED. AID PROJECT SRTS-4009(176)				

VARIABLE - TO MEET EXISTING DIMENSIONS AND FIELD CONDITIONS (SEE NOTE ②)

PROP. CONC. CURB OR CURB AND GUTTER REPLACEMENT IN ACCORDANCE WITH STATE STANDARD 606001. (SEE NOTE ②)

SAW CUT FULL DEPTH - INCLUDED IN THE COST OF SIDEWALK, DRIVEWAY OR MEDIAN SURFACE REMOVAL PAY ITEM.

SEE STATE STANDARD 606001
EXISTING OR PROPOSED HMA SURFACE (IF APPLICABLE)

18" (450) MAX.

1/4" (5) **

EXISTING SIDEWALK, DRIVEWAY, MEDIAN SURFACE, SOD OR GROUND.

PROPOSED SIDEWALK, DRIVEWAY PAVEMENT, MEDIAN SURFACE OR SODDING SALT TOLERANT WITH TOP SOIL, 4" (100) SOD RESTORATION (SEE NOTE ①).

EXISTING CONCRETE PAVEMENT, CONCRETE BASE COURSE OR FLEXIBLE PAVEMENT

3" (75) MIN.

SUITABLE BACKFILL MATERIAL (INCLUDED IN THE COST OF CURB OR CURB AND GUTTER REMOVAL AND REPLACEMENT)

PROPOSED 3/4" (20) PREFORMED EXPANSION JOINT AT CONCRETE SIDEWALKS, DRIVEWAYS, AND MEDIANS. (INCLUDED IN THE COST OF CURB OR CURB AND GUTTER REMOVAL AND REPLACEMENT.)

* 3" (75) MINIMUM FROM TOP AND BOTTOM OF THE CONCRETE PAVEMENT OR BASE COURSE.

** IF THE FINAL SURFACE OF THE PAVEMENT IS CONCRETE, THE GUTTER IS TO BE FLUSH WITH THE PAVEMENT.

NOTE: ① SIDEWALK, DRIVEWAY PAVEMENT OR MEDIAN SURFACE SHALL BE SIMILAR TO THE MATERIAL BEING REMOVED AND WILL BE PAID FOR SEPARATELY.

SODDING, SALT TOLERANT AND TOP SOIL, FURNISH AND PLACE 4" WILL BE PAID FOR SEPARATELY,

② FERTILIZER FOR THE PLACEMENT OF THE SOD IS NOT REQUIRED

③ CURB OR CURB AND GUTTER REPLACEMENT SHALL MATCH THE SHAPE OF THE EXISTING CURB OR CURB AND GUTTER UNLESS OTHERWISE SPECIFIED.

④ FOR CURB OR CURB AND GUTTER REMOVAL AND REPLACEMENT ADJACENT TO FLEXIBLE PAVEMENT DELETE EPOXY COATED TIE BARS.

⑤ LONGITUDINAL BARS, IF ENCOUNTERED IN THE EXISTING CURB OR CURB AND GUTTER, ARE NOT TO BE REPLACED. CUTTING AND REMOVING LONGITUDINAL BARS SHALL BE INCLUDED IN THE COST OF CURB OR CURB AND GUTTER REMOVAL AND REPLACEMENT.

⑥ THE COST OF HMA SURFACE REMOVAL IN THE EXISTING GUTTER FLAG SHALL BE INCLUDED IN THE COST OF THE CURB AND GUTTER REMOVAL AND REPLACEMENT.

⑦ THE REMOVAL AND REPLACEMENT OF THE EXISTING CURB OR CURB AND GUTTER SHALL BE DONE IN ACCORDANCE WITH THE APPLICABLE PORTIONS OF SECTION 440 AND 606 OF THE STANDARD SPECIFICATIONS.

⑧ THE LOCATIONS OF REMOVAL AND REPLACEMENT OF EXISTING CURB OR CURB AND GUTTER SHALL BE DETERMINED BY THE RESIDENT ENGINEER AT THE TIME OF CONSTRUCTION.

UNSUITABLE SUB-BASE MATERIAL TO BE REMOVED, IF DIRECTED BY THE ENGINEER, SHALL BE REPLACED WITH EITHER SUB-BASE GRANULAR MATERIAL, TYPE B OR ADDITIONAL THICKNESS OF CONCRETE.

REMOVAL AND REPLACEMENT 4" (100) OR LESS IS INCLUDED IN THE COST OF CURB OR CURB AND GUTTER REMOVAL AND REPLACEMENT.

REMOVAL AND REPLACEMENT IN EXCESS OF 4" (100) WILL BE PAID FOR IN ACCORDANCE WITH ARTICLE 109.04 OF THE STANDARD SPECIFICATIONS.

PROPOSED #6 (20) EPOXY COATED TIE BARS 24" (600) LONG AT 24" (600) CENTERS WILL NOT BE PAID FOR SEPARATELY. DELETE EPOXY COATED TIE BARS IF EXISTING TIE BARS ARE USUABLE AS DETERMINED BY THE ENGINEER. (SEE NOTE ③).

BASIS OF PAYMENT:

THIS WORK WILL BE PAID FOR AT THE CONTRACT UNIT PRICE PER FOOT (METER) FOR "CURB REMOVAL AND REPLACEMENT" OR "COMBINATION CONCRETE CURB AND GUTTER REMOVAL AND REPLACEMENT".

CURB OR CURB AND GUTTER REMOVAL AND REPLACEMENT

ALL DIMENSIONS ARE IN INCHES (MILLIMETERS) UNLESS OTHERWISE SHOWN.

FILE NAME = 12261_02-DTIS-01-8024 - BD-24

USER NAME = dr-ivakoejn

DESIGNED - A. HOUSEH

REVISED - R. SHAH 10-03-96

CHECKED -

CHECKED -

REVISED - A. ABBAS 03-21-97

PLOT SCALE = 5/8" = 1' / IN.

DRAWN -

REVISED - M. GOMEZ 01-22-01

PLOT DATE = 12/15/2009

CHECKED - 03-11-94

REVISED - R. BORO 12-15-09

STATE OF ILLINOIS
DEPARTMENT OF TRANSPORTATION

**CURB OR CURB AND GUTTER
REMOVAL AND REPLACEMENT**

F.A. RTE.	SECTION	COUNTY	TOTAL SHEETS	SHEET NO.
	12-00063-00-SW	COOK	15	15
BD600-06 (BD-24)			CONTRACT NO. 63855	
FED. ROAD DIST. NO. 1 ILLINOIS FED. AID PROJECT SRTS-4009(176)				

SCALE: SHEET NO. 15 OF 15 SHEETS STA. TO STA.