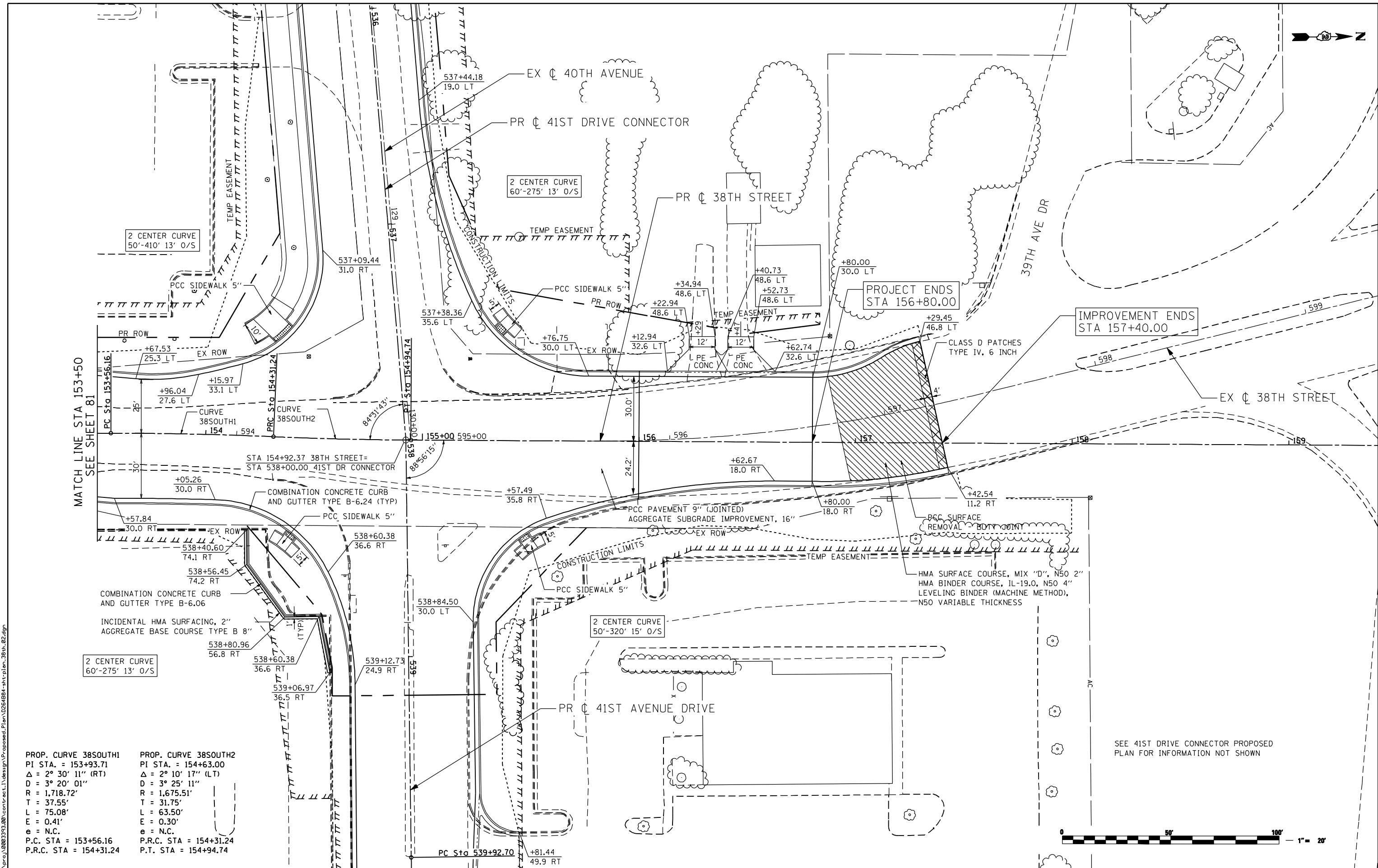


FILE NAME: c:\projects\080313\08\contract\1\design\proposed\Plan\026484-38th-plan\_38th\_02.dgn



<b>PROP. CURVE 38SOUTH1</b> PI STA. = 153+93.71 $\Delta = 2^\circ 30' 11''$ (RT) $D = 3^\circ 20' 01''$ $R = 1,718.72'$ $T = 37.55'$ $L = 75.08'$ $E = 0.41'$ $e = \text{N.C.}$ P.C. STA = 153+56.16 P.R.C. STA = 154+31.24	<b>PROP. CURVE 38SOUTH2</b> PI STA. = 154+63.00 $\Delta = 2^\circ 10' 17''$ (LT) $D = 3^\circ 25' 11''$ $R = 1,675.51'$ $T = 31.75'$ $L = 63.50'$ $E = 0.30'$ $e = \text{N.C.}$ P.R.C. STA = 154+31.24 P.T. STA = 154+94.74
---	---

SEE 41ST DRIVE CONNECTOR PROPOSED PLAN FOR INFORMATION NOT SHOWN



**Ciorba Group, Inc.**  
 CONSULTING ENGINEERS  
 6507 North Cumberland Avenue, Suite 402  
 Chicago, Illinois 60656  
 Tel. 773.776.4009 Fax 773.776.4014

USER NAME = espino	DESIGNED -	REVISED -
PLOT SCALE = 48.00' / IN.	DRAWN -	REVISED -
PLOT DATE = 3/11/2013	CHECKED -	REVISED -
DATE = 3/11/2013	REVISIONS -	REVISED -

**STATE OF ILLINOIS  
 DEPARTMENT OF TRANSPORTATION**

**38TH STREET  
 PROPOSED PLAN**

SCALE:	SHEET NO.	OF SHEETS	STA.	TO STA.
--------	-----------	-----------	------	---------

F.A.P. RTE.	SECTION	COUNTY	TOTAL SHEETS	SHEET NO.
595	(142-1)R & 142-1)B	ROCK ISLAND	507	82
CONTRACT NO. 64B84				
ILLINOIS FED. AID PROJECT				