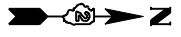
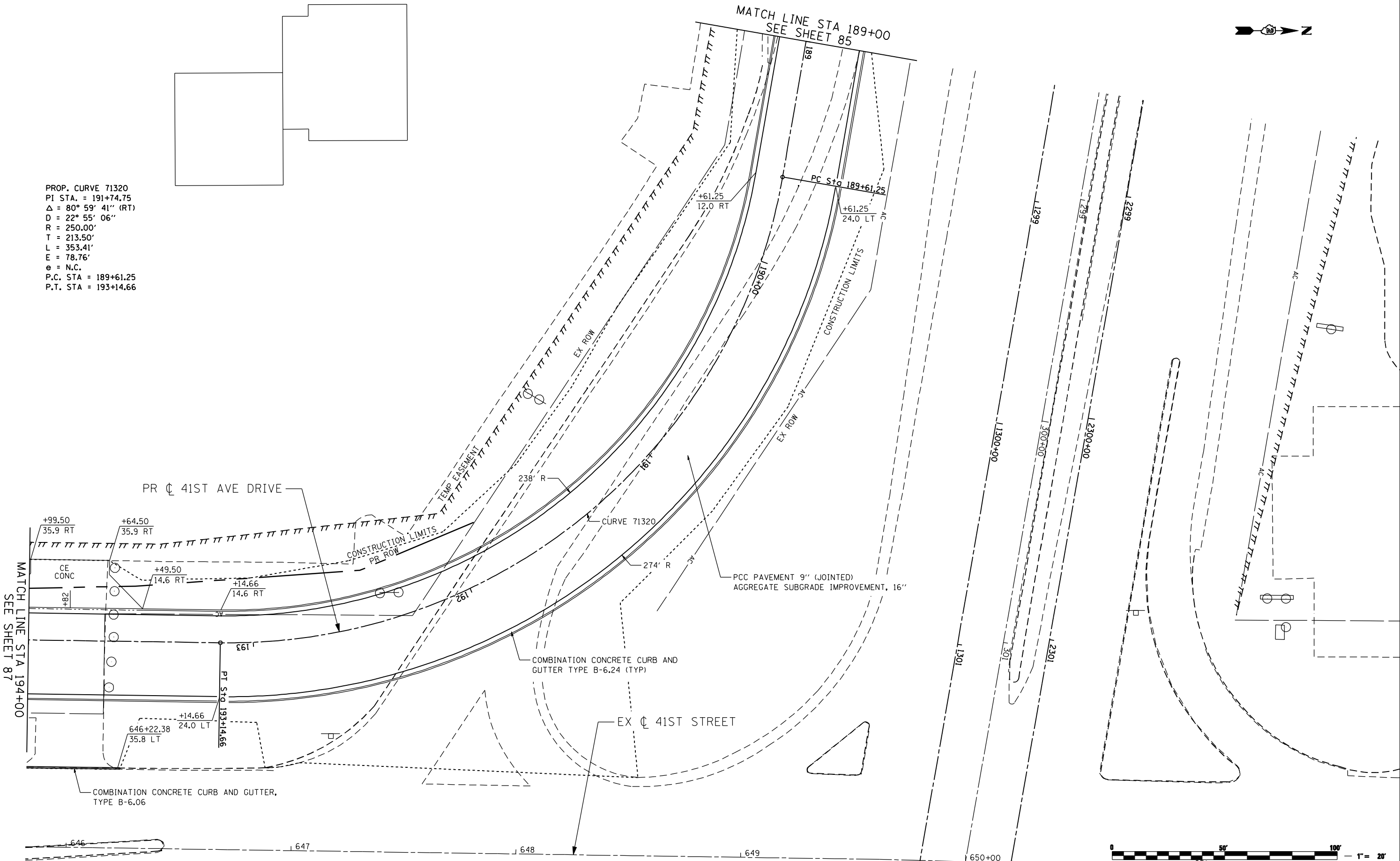


PROP. CURVE 71320
 PI STA. = 191+74.75
 $\Delta = 80^\circ 59' 41''$ (RT)
 $D = 22^\circ 55' 06''$
 $R = 250.00'$
 $T = 213.50'$
 $L = 353.41'$
 $E = 78.76'$
 $e = N.C.$
 P.C. STA = 189+61.25
 P.T. STA = 193+14.66



MATCH LINE STA 189+00
 SEE SHEET 85



MATCH LINE STA 194+00
 SEE SHEET 87



FILE NAME: c:\p\proj\080319\08\cortr\act\1\design\p\proposed\plan\0264884-shr-plan-41staveDr_82.dgn

Ciorba Group, Inc.
 CONSULTING ENGINEERS
 6507 North Cumberland Avenue, Suite 402
 Chicago, Illinois 60656
 Tel. 773.776.4009 Fax 773.776.4014

USER NAME = espino	DESIGNED -	REVISED -
PLOT SCALE = 48.0000" / IN.	DRAWN -	REVISED -
PLOT DATE = 3/11/2013	CHECKED -	REVISED -
	DATE = 3/11/2013	REVISED -

**STATE OF ILLINOIS
 DEPARTMENT OF TRANSPORTATION**

41ST AVENUE DRIVE PROPOSED PLAN				
SCALE:	SHEET NO.	OF SHEETS	STA.	TO STA.

F.A.P. RTE.	SECTION	COUNTY	TOTAL SHEETS	SHEET NO.
595	(142-1)R & 142-1HB	ROCK ISLAND	507	86
CONTRACT NO. 64B84				
ILLINOIS FED. AID PROJECT				