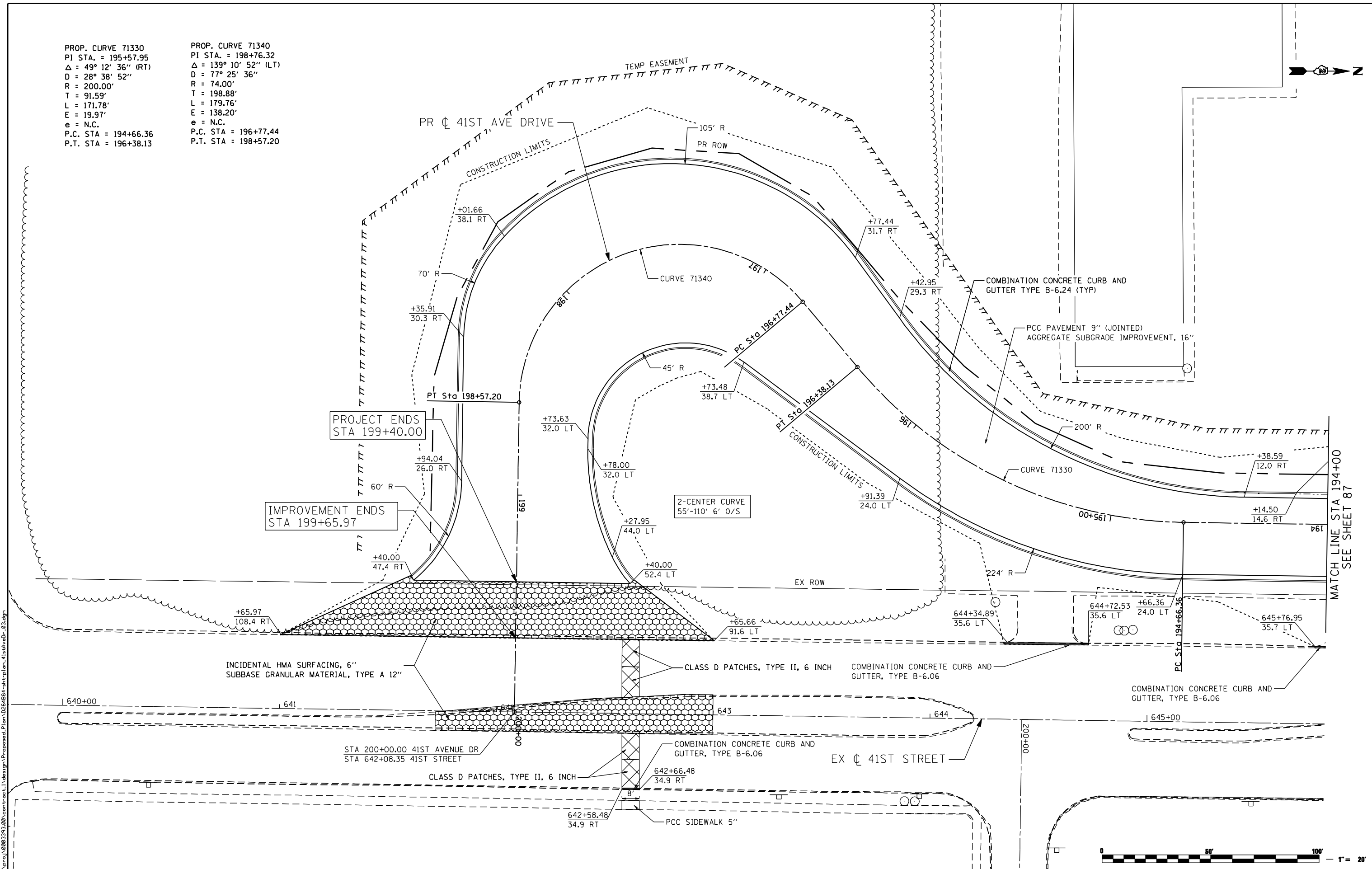


PROP. CURVE 71330
 PI STA. = 195+57.95
 $\Delta = 49^\circ 12' 36''$ (RT)
 $D = 28^\circ 38' 52''$
 $R = 200.00'$
 $T = 91.59'$
 $L = 171.78'$
 $E = 19.97'$
 $e = N.C.$
 P.C. STA = 194+66.36
 P.T. STA = 196+38.13

PROP. CURVE 71340
 PI STA. = 198+76.32
 $\Delta = 139^\circ 10' 52''$ (LT)
 $D = 77^\circ 25' 36''$
 $R = 74.00'$
 $T = 198.88'$
 $L = 179.76'$
 $E = 138.20'$
 $e = N.C.$
 P.C. STA = 196+77.44
 P.T. STA = 198+57.20



FILE NAME: c:\projects\080313\08\contract\1\design\proposed\plan\0264884-shr-plan-41stAveDr_83.dgn

Ciorba Group, Inc.
 CONSULTING ENGINEERS
 6507 North Cumberland Avenue, Suite 402
 Chicago, Illinois 60656
 Tel. 773.776.4009 Fax 773.776.4014

USER NAME = espino	DESIGNED - DJO/BVS	REVISED -
PLOT SCALE = 48.0000' / IN.	DRAWN - NT	REVISED -
PLOT DATE = 3/11/2013	CHECKED - DJO	REVISED -
	DATE - 3/11/2013	REVISED -

**STATE OF ILLINOIS
 DEPARTMENT OF TRANSPORTATION**

**41ST AVENUE DRIVE
 PROPOSED PLAN**

SCALE: 1 : 20 SHEET NO. OF SHEETS STA. TO STA.

F.A.P. RTE.	SECTION	COUNTY	TOTAL SHEETS	SHEET NO.
595	(142-1)R & 142-1)B	ROCK ISLAND	507	87
CONTRACT NO. 64B84				
ILLINOIS FED. AID PROJECT				