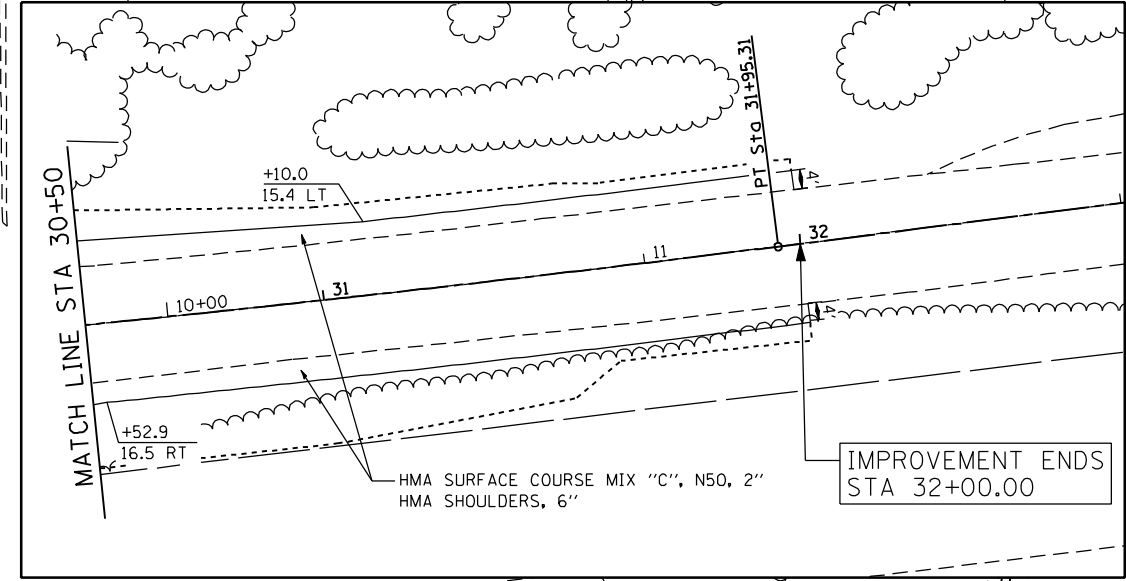
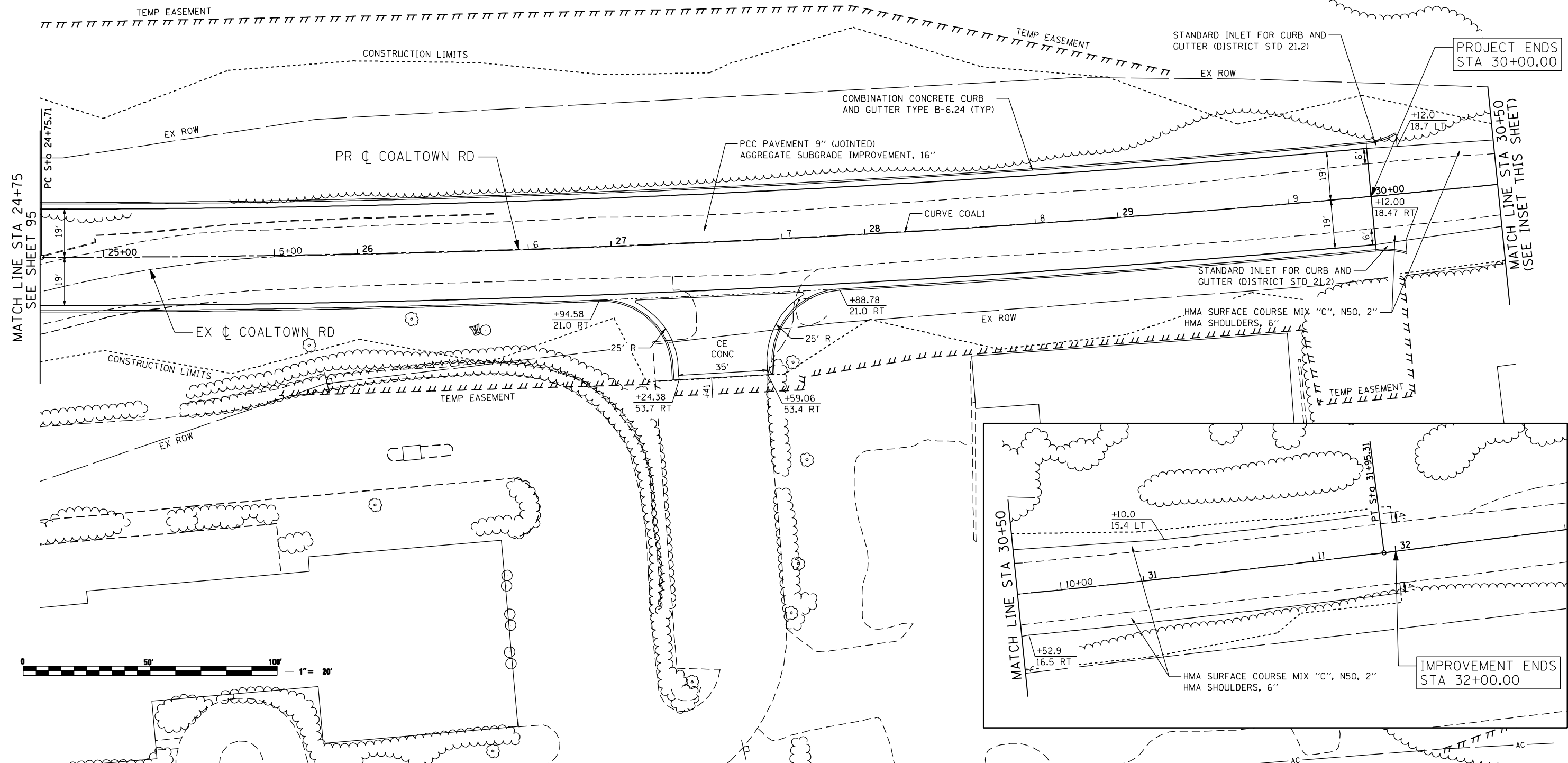


PROP. CURVE COAL1
 PI STA. = 28+35.98
 $\Delta = 7^\circ 11' 46''$ (LT)
 $D = 1^\circ 00' 00''$
 $R = 5,729.58'$
 $T = 360.27'$
 $L = 719.60'$
 $e = 11.32'$
 $e = N.C.$
 P.C. STA = 24+75.71
 P.T. STA = 31+95.31



FILE NAME: c:\projects\08031913\08\contract\1\design\proposed\Plan\0264884-ent-plan-CTR.dgn

Ciorba Group, Inc.
 CONSULTING ENGINEERS
 6507 North Cumberland Avenue, Suite 402
 Chicago, Illinois 60656
 Tel. 773.776.4009 Fax 773.776.4014

USER NAME = espino	DESIGNED -	REVISED -
PLOT SCALE = 48.0000" / IN.	DRAWN -	REVISED -
PLOT DATE = 3/11/2013	CHECKED -	REVISED -
	DATE = 3/11/2013	REVISED -

**STATE OF ILLINOIS
 DEPARTMENT OF TRANSPORTATION**

**COALTOWN ROAD
 PROPOSED PLAN**

SCALE: SHEET NO. OF SHEETS STA. TO STA.

F.A.P. RTE.	SECTION	COUNTY	TOTAL SHEETS	SHEET NO.
595	(142-1)R & 142-1)B	ROCK ISLAND	507	96
CONTRACT NO. 64B84				
ILLINOIS FED. AID PROJECT				