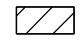


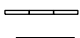
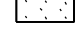


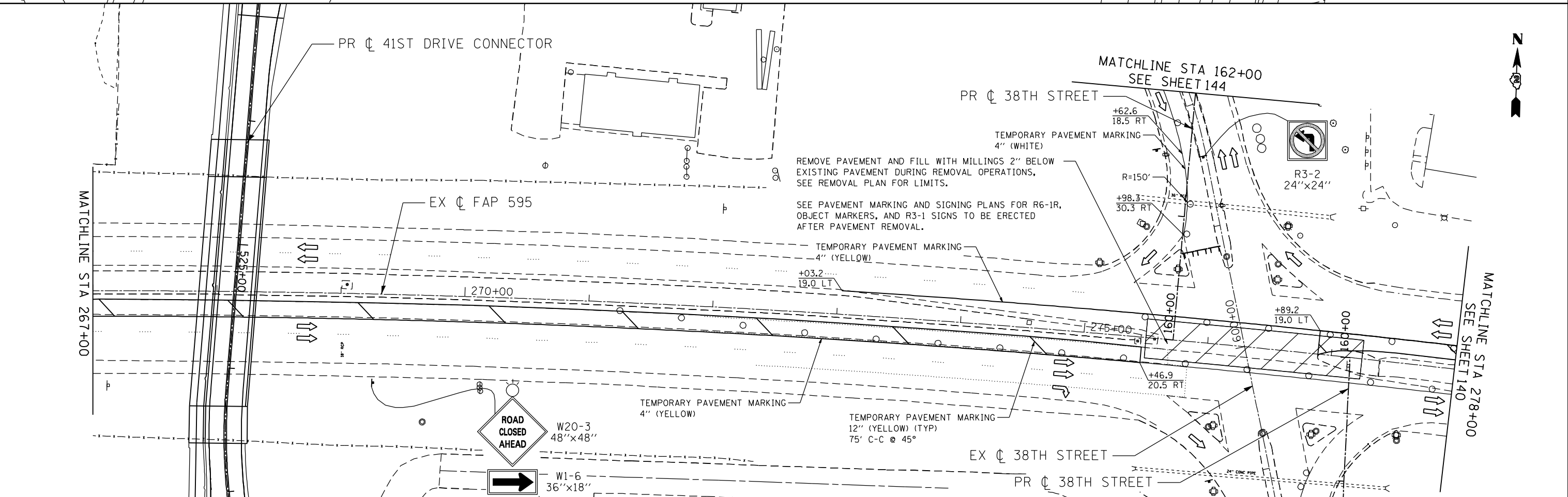
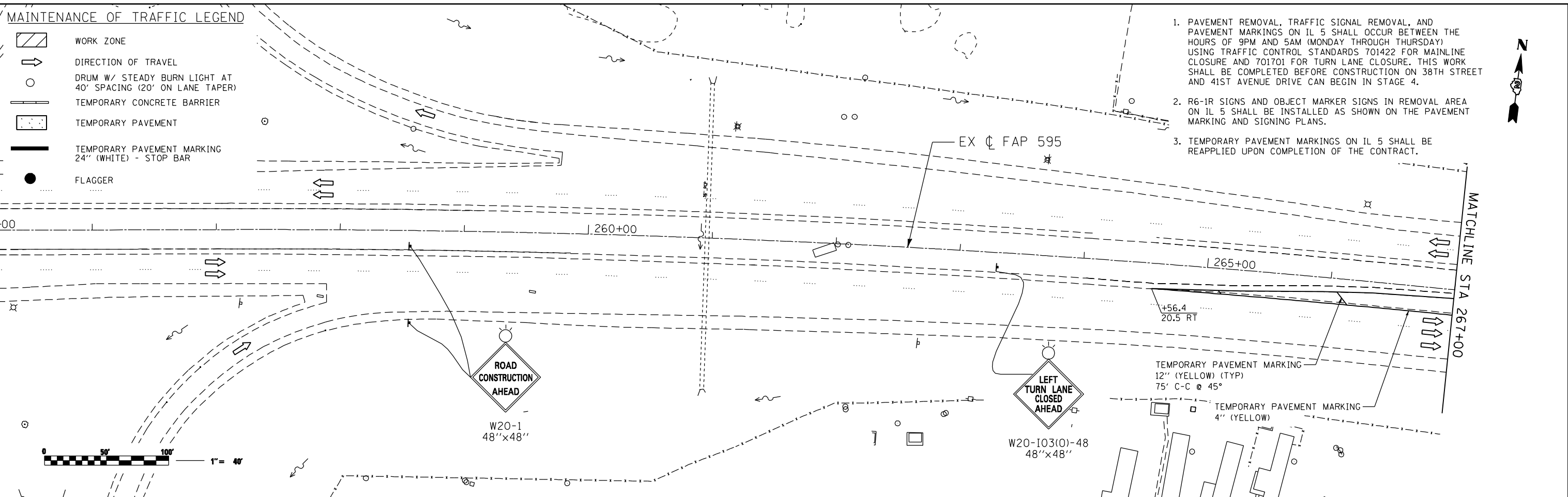


MAINTENANCE OF TRAFFIC LEGEND

-  WORK ZONE
-  DIRECTION OF TRAVEL
-  DRUM W/ STEADY BURN LIGHT AT 40' SPACING (20' ON LANE TAPER)
-  TEMPORARY CONCRETE BARRIER
-  TEMPORARY PAVEMENT
-  TEMPORARY PAVEMENT MARKING 24" (WHITE) - STOP BAR
-  FLAGGER

1. PAVEMENT REMOVAL, TRAFFIC SIGNAL REMOVAL, AND PAVEMENT MARKINGS ON IL 5 SHALL OCCUR BETWEEN THE HOURS OF 9PM AND 5AM (MONDAY THROUGH THURSDAY) USING TRAFFIC CONTROL STANDARDS 701422 FOR MAINLINE CLOSURE AND 701701 FOR TURN LANE CLOSURE. THIS WORK SHALL BE COMPLETED BEFORE CONSTRUCTION ON 38TH STREET AND 41ST AVENUE DRIVE CAN BEGIN IN STAGE 4.
2. R6-1R SIGNS AND OBJECT MARKER SIGNS IN REMOVAL AREA ON IL 5 SHALL BE INSTALLED AS SHOWN ON THE PAVEMENT MARKING AND SIGNING PLANS.
3. TEMPORARY PAVEMENT MARKINGS ON IL 5 SHALL BE REAPPLIED UPON COMPLETION OF THE CONTRACT.



FILE NAME: c:\projects\0803193\08\contract\1\design\DOT\Sheet Files\0264884-ent-stage 4_01.dgn

Ciorba Group, Inc.
 CONSULTING ENGINEERS
 5507 North Cumberland Avenue, Suite 402
 Chicago, Illinois 60656
 Tel. 773.776.4009 Fax 773.776.4014

USER NAME = espino	DESIGNED -	REVISED -
PLOT SCALE = 88.0000 "/>		

**STATE OF ILLINOIS
 DEPARTMENT OF TRANSPORTATION**

**MAINTENANCE OF TRAFFIC - STAGE 4
 JOHN DEERE ROAD TRAFFIC CONTROL SETUP**

F.A.P. RTE.	SECTION	COUNTY	TOTAL SHEETS	SHEET NO.
595	(142-1)R & 142-1)B	ROCK ISLAND	507	139
CONTRACT NO. 64B84				
ILLINOIS FED. AID PROJECT				

SCALE: 1 : 40 SHEET NO. OF SHEETS STA. TO STA.