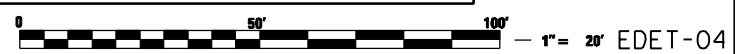
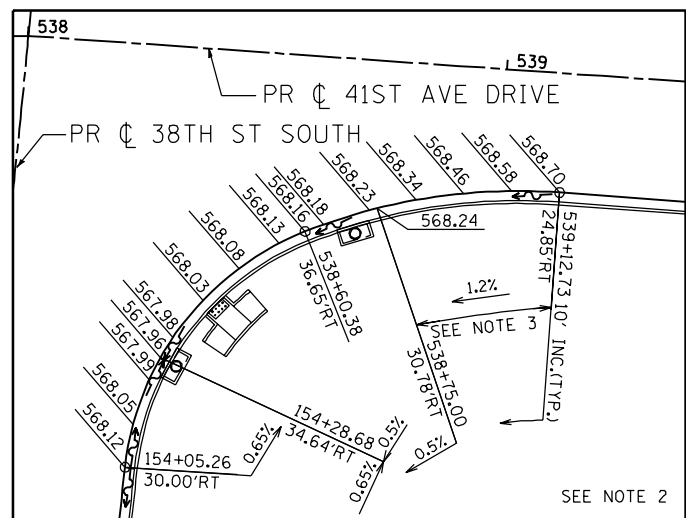
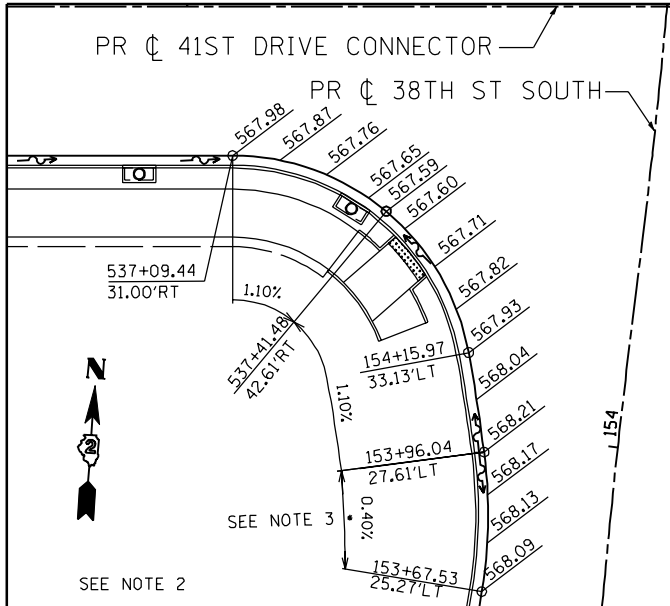
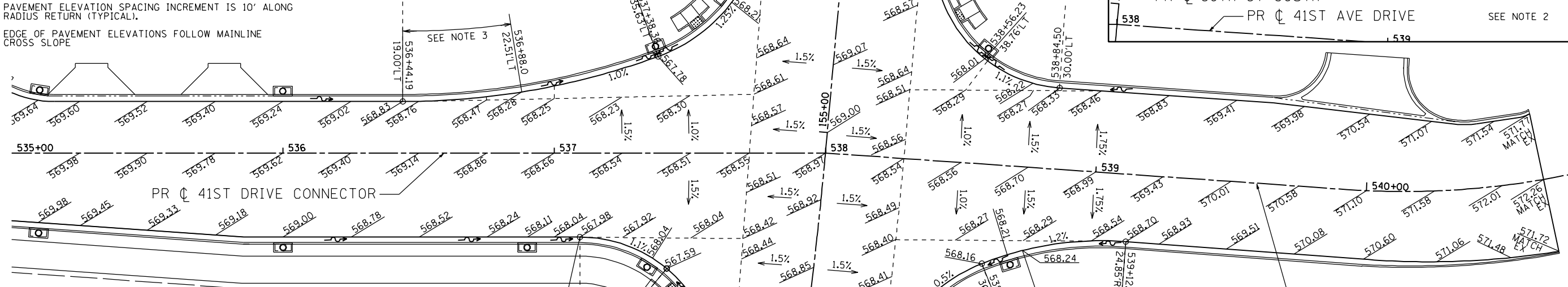


- NOTES:
1. PAVEMENT ELEVATION SPACING INCREMENT IS 25' ALONG MAINLINE (TYPICAL).
  2. PAVEMENT ELEVATION SPACING INCREMENT IS 10' ALONG RADIUS RETURN (TYPICAL).
  3. EDGE OF PAVEMENT ELEVATIONS FOLLOW MAINLINE CROSS SLOPE



2600 Warrenville Road, Suite 203, Downers Grove, IL 60515  
 630.705.0110 voice, 630.839.3566 fax  
 www.mps-il.com  
**MILLENNIA PROFESSIONAL SERVICES**

DESIGNED - TVN	REVISED -
DRAWN - CJD	REVISED -
CHECKED - RPD	REVISED -
DATE - 3/11/2013	REVISED -

**STATE OF ILLINOIS  
 DEPARTMENT OF TRANSPORTATION**

<b>38TH STREET AT 41ST DRIVE CONNECTOR PAVEMENT ELEVATION DETAIL</b>			
SCALE: 1"=20'	SHEET NO. OF SHEETS	STA. TO STA.	

F.A.P. RTE. 595	SECTION (142-1JR & 142-1HB)	COUNTY ROCK ISLAND	TOTAL SHEETS 507	SHEET NO. 236
CONTRACT NO. 648B4				
FED. ROAD DIST. NO. 1   ILLINOIS FED. AID PROJECT				

Pr\2011\ME11008\_PTB155-26\_IL5\_JDR\_Corba\CADD\Shets\02648B4-shr-elev.04.dgn