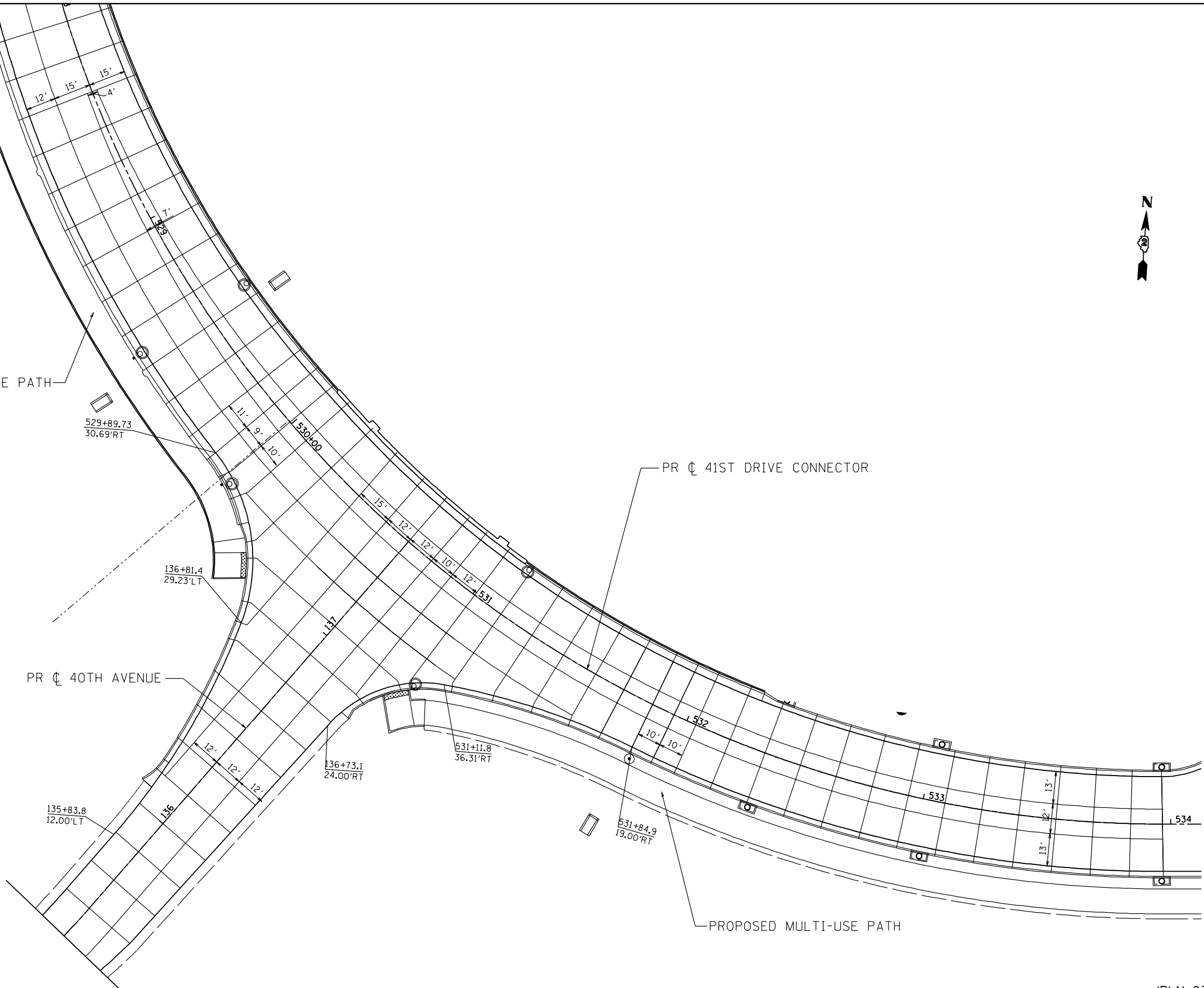




PROPOSED MULTI-USE PATH



- NOTES:
1. TRANSVERSE JOINT SPACING IS 15' UNLESS OTHERWISE NOTED.
 2. CONTRACTOR SHALL ADJUST JOINTS TO ACCOMMODATE UTILITY CASTINGS, SEE STANDARD 420111.
 3. PAVEMENT JOINT STUBS SHALL BE 1' MINIMUM.
 4. JOINTS IN THE ADJACENT PAVEMENT SHALL BE IN LINE WITH THE ANCHORAGE SLAB JOINTS OF THE MSE WALL.

JPLN-03



2600 Warrenville Road, Suite 203, Downers Grove, IL 60515
 630.705.0110 voice, 630.839.3566 fax
 www.mps-il.com
MILLENNIA PROFESSIONAL SERVICES

DESIGNED - TVN	REVISED -
DRAWN - CJD	REVISED -
CHECKED - RPD	REVISED -
DATE - 3/11/2013	REVISED -

**STATE OF ILLINOIS
 DEPARTMENT OF TRANSPORTATION**

**41ST DRIVE CONNECTOR AT 40TH AVENUE
 JOINTING PLAN**

SCALE: 1=20 SHEET NO. OF SHEETS STA. TO STA.

F.A.P. RTE.	SECTION	COUNTY	TOTAL SHEETS	SHEET NO.
595	(142-1)R & 142-1)B	ROCK ISLAND	507	240
CONTRACT NO. 64B84				

FED. ROAD DIST. NO. 1 | ILLINOIS FED. AID PROJECT
 P:\2011\ME11008_PTB155-26_IL5_JDR_Ciorba\CADD\Shets\0264B84-sh1-joint.03.dgn