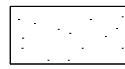
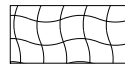
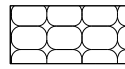

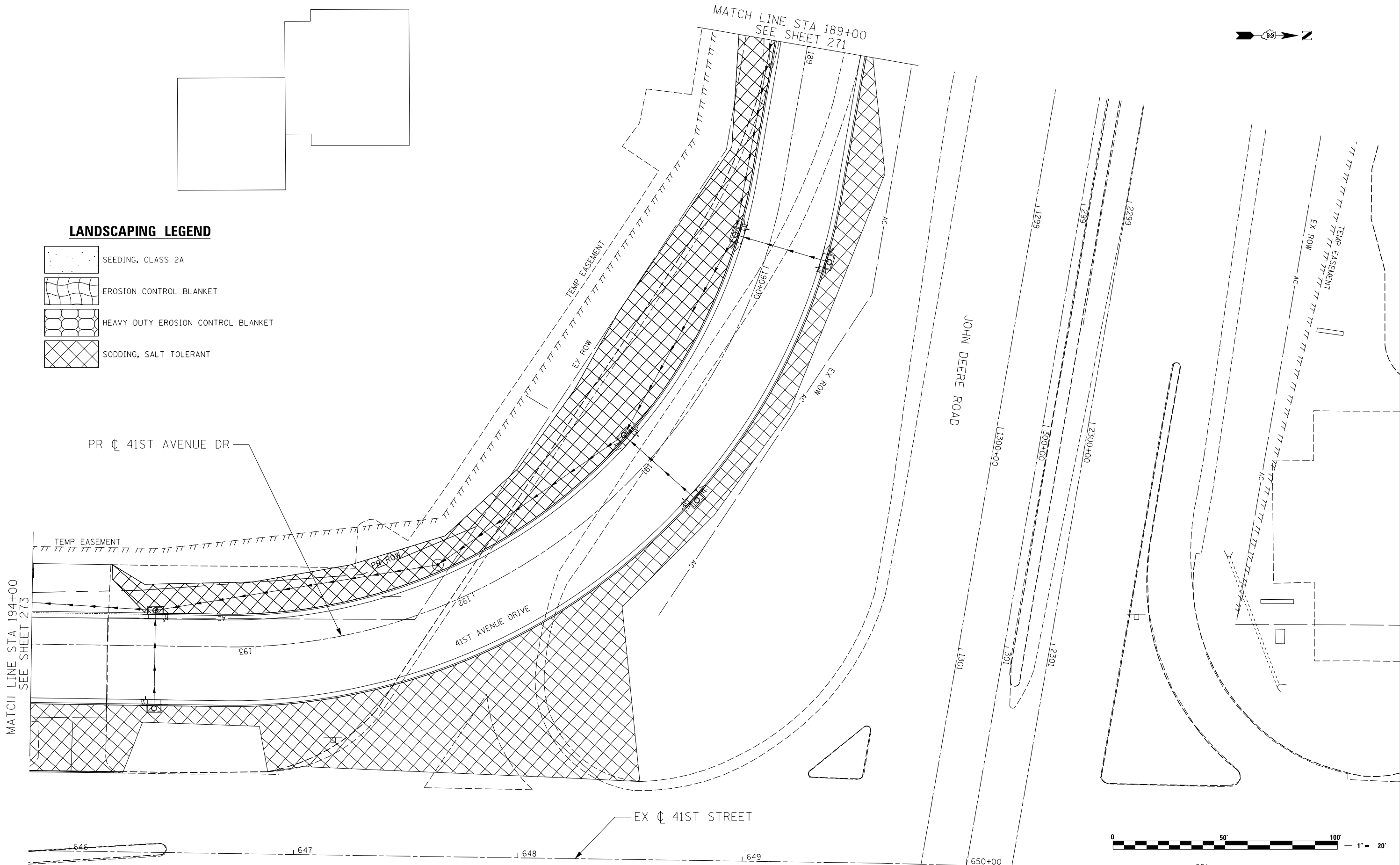


LANDSCAPING LEGEND

-  SEEDING, CLASS 2A
-  EROSION CONTROL BLANKET
-  HEAVY DUTY EROSION CONTROL BLANKET
-  SODDING, SALT TOLERANT



LE LIN ENGINEERING, LTD.
Consulting Engineers
Springfield, Illinois

| | | |
|------------------------------|------------------|-----------|
| USER NAME = Plotted by Lin21 | DESIGNED - RWK | REVISED - |
| PLOT SCALE = 40.0000' / in. | DRAWN - RWK | REVISED - |
| PLOT DATE = 3/11/2013 | CHECKED - ST | REVISED - |
| | DATE - 3/11/2013 | REVISED - |

**STATE OF ILLINOIS
DEPARTMENT OF TRANSPORTATION**

**41ST AVENUE DRIVE
PERMANENT EROSION CONTROL AND LANDSCAPING PLANS**

SCALE: 1"=20' SHEET NO. 6 OF 17 SHEETS STA. 189+00 TO STA. 194+00

| F.A.P. RTE. | SECTION | COUNTY | TOTAL SHEETS | SHEET NO. |
|--|---------------------|-------------|--------------|-----------|
| 595 | (142-1R-1, 142-1HB) | ROCK ISLAND | 507 | 272 |
| CONTRACT NO. 64B84 | | | | |
| FED. ROAD DIST. NO. 2 ILLINOIS FED. AID PROJECT | | | | |