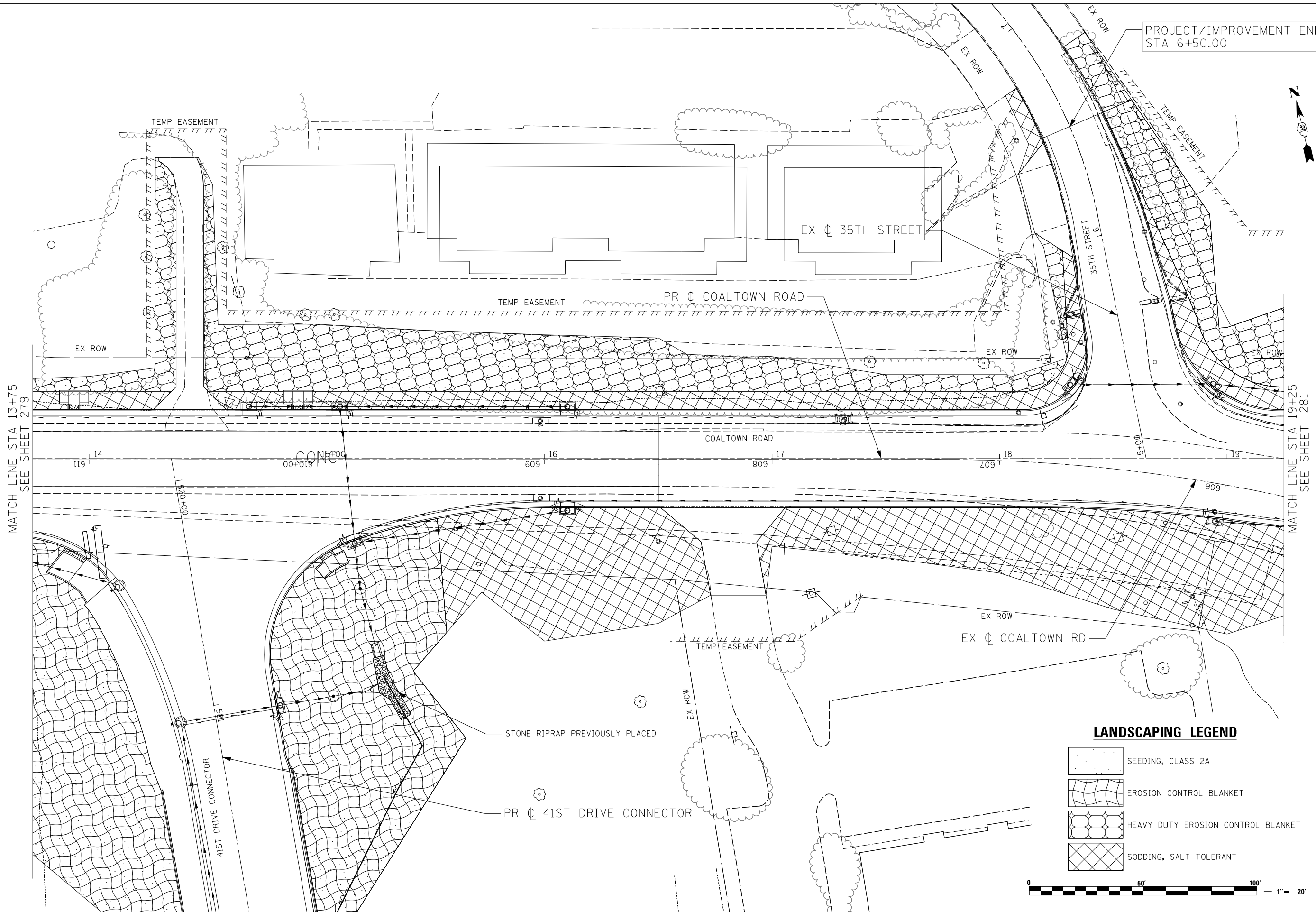
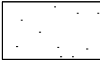
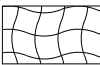




PROJECT/IMPROVEMENT ENDS
STA 6+50.00



LANDSCAPING LEGEND

-  SEEDING, CLASS 2A
-  EROSION CONTROL BLANKET
-  HEAVY DUTY EROSION CONTROL BLANKET
-  SODDING, SALT TOLERANT



LIN ENGINEERING, LTD.
Consulting Engineers
Springfield, Illinois

USER NAME = Plotted by LinZl
DESIGNED - RWK
DRAWN - RWK
CHECKED - ST
DATE - 3/11/2013

REVISED -
REVISED -
REVISED -
REVISED -

**STATE OF ILLINOIS
DEPARTMENT OF TRANSPORTATION**

**COALTOWN ROAD
PERMANENT EROSION CONTROL AND LANDSCAPING PLANS**

SCALE: 1"=20' SHEET NO. 14 OF 17 SHEETS STA. 13+75 TO STA. 19+25

F.A.P. R.T.E.	SECTION	COUNTY	TOTAL SHEETS	SHEET NO.
595	(142-11R-1, 142-11B)	ROCK ISLAND	507	280
CONTRACT NO. 64B84				

FED. ROAD DIST. NO. 2 ILLINOIS FED. AID PROJECT