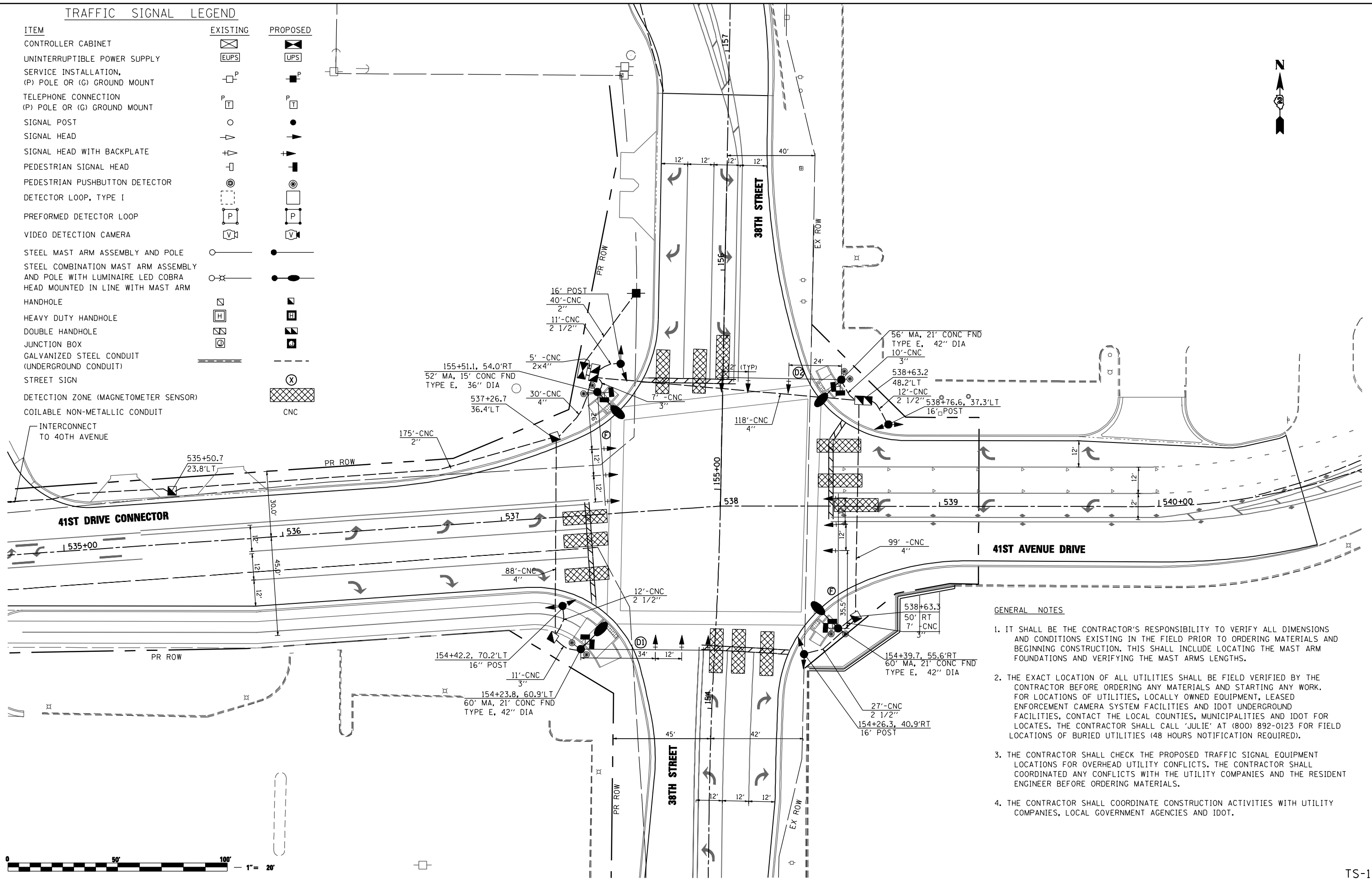


TRAFFIC SIGNAL LEGEND

ITEM	EXISTING	PROPOSED
CONTROLLER CABINET		
UNINTERRUPTIBLE POWER SUPPLY		
SERVICE INSTALLATION, (P) POLE OR (G) GROUND MOUNT		
TELEPHONE CONNECTION (P) POLE OR (G) GROUND MOUNT		
SIGNAL POST		
SIGNAL HEAD		
SIGNAL HEAD WITH BACKPLATE		
PEDESTRIAN SIGNAL HEAD		
PEDESTRIAN PUSHBUTTON DETECTOR		
DETECTOR LOOP, TYPE I		
PERFORMED DETECTOR LOOP		
VIDEO DETECTION CAMERA		
STEEL MAST ARM ASSEMBLY AND POLE		
STEEL COMBINATION MAST ARM ASSEMBLY AND POLE WITH LUMINAIRE LED COBRA HEAD MOUNTED IN LINE WITH MAST ARM		
HANDHOLE		
HEAVY DUTY HANDHOLE		
DOUBLE HANDHOLE		
JUNCTION BOX		
GALVANIZED STEEL CONDUIT (UNDERGROUND CONDUIT)		
STREET SIGN		
DETECTION ZONE (MAGNETOMETER SENSOR)		
COILABLE NON-METALLIC CONDUIT		



GENERAL NOTES

- IT SHALL BE THE CONTRACTOR'S RESPONSIBILITY TO VERIFY ALL DIMENSIONS AND CONDITIONS EXISTING IN THE FIELD PRIOR TO ORDERING MATERIALS AND BEGINNING CONSTRUCTION. THIS SHALL INCLUDE LOCATING THE MAST ARM FOUNDATIONS AND VERIFYING THE MAST ARMS LENGTHS.
- THE EXACT LOCATION OF ALL UTILITIES SHALL BE FIELD VERIFIED BY THE CONTRACTOR BEFORE ORDERING ANY MATERIALS AND STARTING ANY WORK. FOR LOCATIONS OF UTILITIES, LOCALLY OWNED EQUIPMENT, LEASED ENFORCEMENT CAMERA SYSTEM FACILITIES AND IDOT UNDERGROUND FACILITIES, CONTACT THE LOCAL COUNTIES, MUNICIPALITIES AND IDOT FOR LOCATES. THE CONTRACTOR SHALL CALL 'JULIE' AT (800) 892-0123 FOR FIELD LOCATIONS OF BURIED UTILITIES (48 HOURS NOTIFICATION REQUIRED).
- THE CONTRACTOR SHALL CHECK THE PROPOSED TRAFFIC SIGNAL EQUIPMENT LOCATIONS FOR OVERHEAD UTILITY CONFLICTS. THE CONTRACTOR SHALL COORDINATE ANY CONFLICTS WITH THE UTILITY COMPANIES AND THE RESIDENT ENGINEER BEFORE ORDERING MATERIALS.
- THE CONTRACTOR SHALL COORDINATE CONSTRUCTION ACTIVITIES WITH UTILITY COMPANIES, LOCAL GOVERNMENT AGENCIES AND IDOT.



2600 Warrenville Road, Suite 203, Downers Grove, IL 60515
630.705.0110 voice, 630.839.3566 fax
www.mps-il.com

MILLENNIA PROFESSIONAL SERVICES

DESIGNED - TVN	REVISED -
DRAWN - CJD	REVISED -
CHECKED - RPD	REVISED -
DATE - 3/11/2013	REVISED -

**STATE OF ILLINOIS
DEPARTMENT OF TRANSPORTATION**

**TRAFFIC SIGNAL PLAN
38TH STREET AND 41ST DRIVE CONNECTOR**

SCALE: 1"=20' SHEET NO. OF SHEETS STA. TO STA.

F.A.P. RTE.	SECTION	COUNTY	TOTAL SHEETS	SHEET NO.
595	(142-1JR & 142-1HB)	ROCK ISLAND	507	292
CONTRACT NO. 64B84				

TS-11

P:\2011\ME11008_PTB155-26_IL5-JDR_Ciorba\CADD\Shets\0264B84-sht-TS11.385T_41DR.dgn