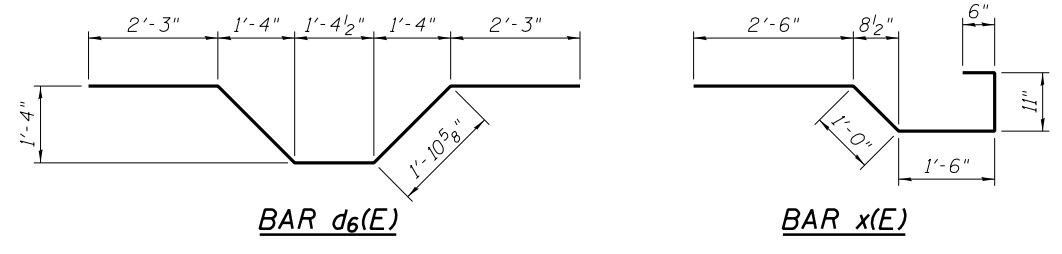
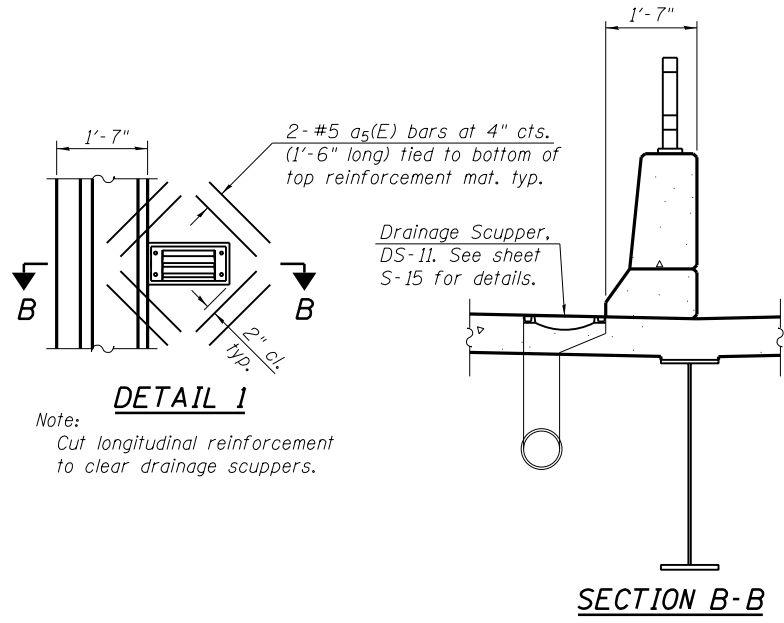


d3(E) bar is not included in the Bill of Materials. This bar substitutes d2(E) bar if the alternate shown on sheet S-8 is used.

SUPERSTRUCTURE BILL OF MATERIAL

Bar	No.	Size	Length	Shape
a(E)	780	# 5	24'-8"	—
a1(E)	732	# 5	17'-7"	—
a2(E)	398	# 6	6'-6"	—
a3(E)	398	# 6	14'-6"	—
a4(E)	200	# 5	3'-3"	—
a5(E)	16	# 5	1'-6"	—
a6(E)	16	# 5	24'-9"	—
a7(E)	2	# 5	39'-0"	—
a8(E)	30	# 5	8'-9"	—
b(E)	343	# 5	28'-10"	—
b1(E)	368	# 5	25'-7"	—
b2(E)	141	# 6	23'-5"	—
d(E)	400	# 5	5'-7"	—
d1(E)	200	# 5	8'-4"	—
d2(E)	200	# 5	7'-4"	—
d5(E)	9	# 6	4'-5"	—
d6(E)	15	# 6	9'-8"	—
e(E)	32	# 4	17'-1"	—
e1(E)	4	# 8	17'-1"	—
e2(E)	112	# 4	18'-1"	—
e3(E)	16	# 8	22'-3"	—
e4(E)	16	# 4	19'-10"	—
x(E)	80	# 5	6'-5"	—
Reinforcement Bars, Epoxy Coated			Pound	82,090
Concrete Superstructure			Cu. Yds.	271.9



NOTES:
Work this sheet with Sheets S-7 and S-8.

N:\PROJ\00033333\CONTRACT\1\Design\Structure\1\CAD\081-0176-D264884-09-Superstructure_Details_2.dgn



USER NAME = mteng	DESIGNED - MHT	REVISED -
PLOT SCALE = 0:2.0000 1" = 1'-0"	CHECKED - BWS	REVISED -
PLOT DATE = 3/11/2013	DRAWN - SMY	REVISED -
	CHECKED - BWS	REVISED -

STATE OF ILLINOIS DEPARTMENT OF TRANSPORTATION

SUPERSTRUCTURE DETAILS - 2
STRUCTURE NO. 081-0176
SHEET NO. S-9 OF S-27 SHEETS

F.A.P. RTE.	SECTION	COUNTY	TOTAL SHEETS	SHEET NO.
595	(142-1JR & 142-1HB)	ROCK ISLAND	507	308
CONTRACT NO. 64B84			ILLINOIS FED. AID PROJECT	