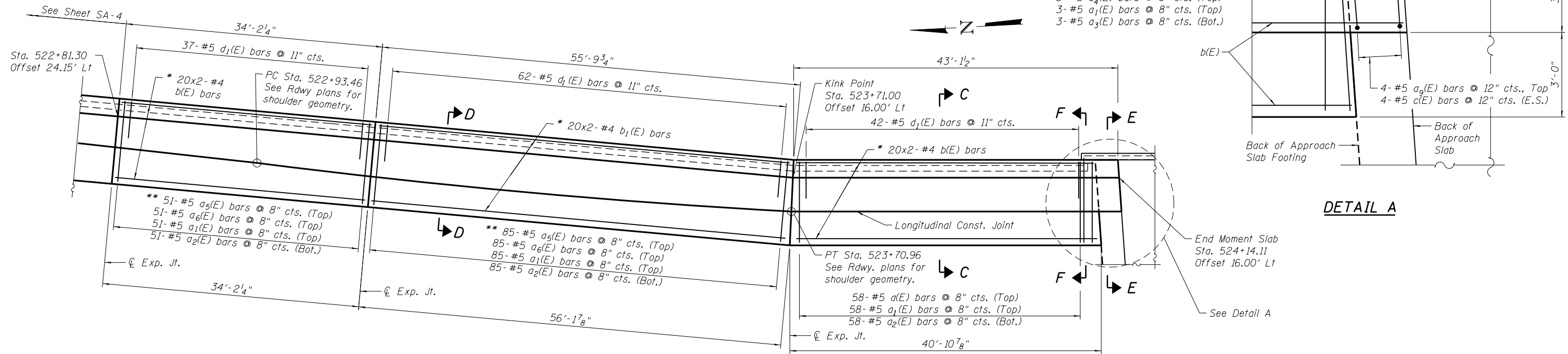
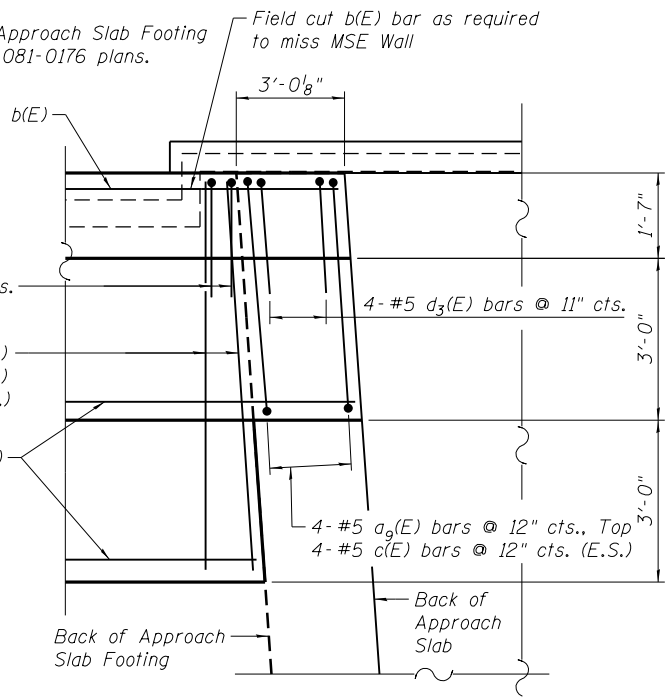


ELEVATION
(Looking East)



PLAN



DETAIL A

* See cross section for placement.
** Field cut to fit as required.

MIN. BAR LAP
#4 bar = 2'-11"
#8 bar = 6'-9"

- NOTES:**
1. Bars indicated thus 7x2-#5 etc. indicates 7 lines of bars with 2 lengths per line.
 2. E.S. = Each Side, F.F. = Front Face, B.F. = Back Face, E.S. = Each Side.
 3. Offsets are to front face of parapet.
 4. For sections C-C, D-D, E-E & F-F, see Sheet SA-9.
 5. For Bar Bending Diagrams and Bill of Materials, see Sheet SA-11.
 6. For Parapet Joint details, see Sheet SA-9.
 7. Bend b₁(E) bars in field to match curve.
 8. For Transverse Contraction Joint details, see Sheet SA-10.
 9. For Expansion Joint details, see Sheet SA-9.

I:\PROJECTS\081-7002\081-7002_05_East_Moment_Slab.dgn



| | | |
|----------------------------|----------------|-----------|
| USER NAME = mteng | DESIGNED - APD | REVISED - |
| PLOT SCALE = 1/4" = 1' in. | CHECKED - BWS | REVISED - |
| PLOT DATE = 3/11/2013 | DRAWN - RD | REVISED - |
| | CHECKED - BWS | REVISED - |

STATE OF ILLINOIS
DEPARTMENT OF TRANSPORTATION

EAST MOMENT SLAB PLAN & ELEVATION (2 OF 2)
STRUCTURE NO. 081-7002

| | | | | |
|---------------------------|------------------------|-------------|--------------------|-----------|
| F.A.P. RTE. | SECTION | COUNTY | TOTAL SHEETS | SHEET NO. |
| 595 | (142-1)R-1 AND 142-1HB | ROCK ISLAND | 507 | 331 |
| ILLINOIS FED. AID PROJECT | | | CONTRACT NO. 64B84 | |

SHEET NO. SA-5 OF SA-16 SHEETS