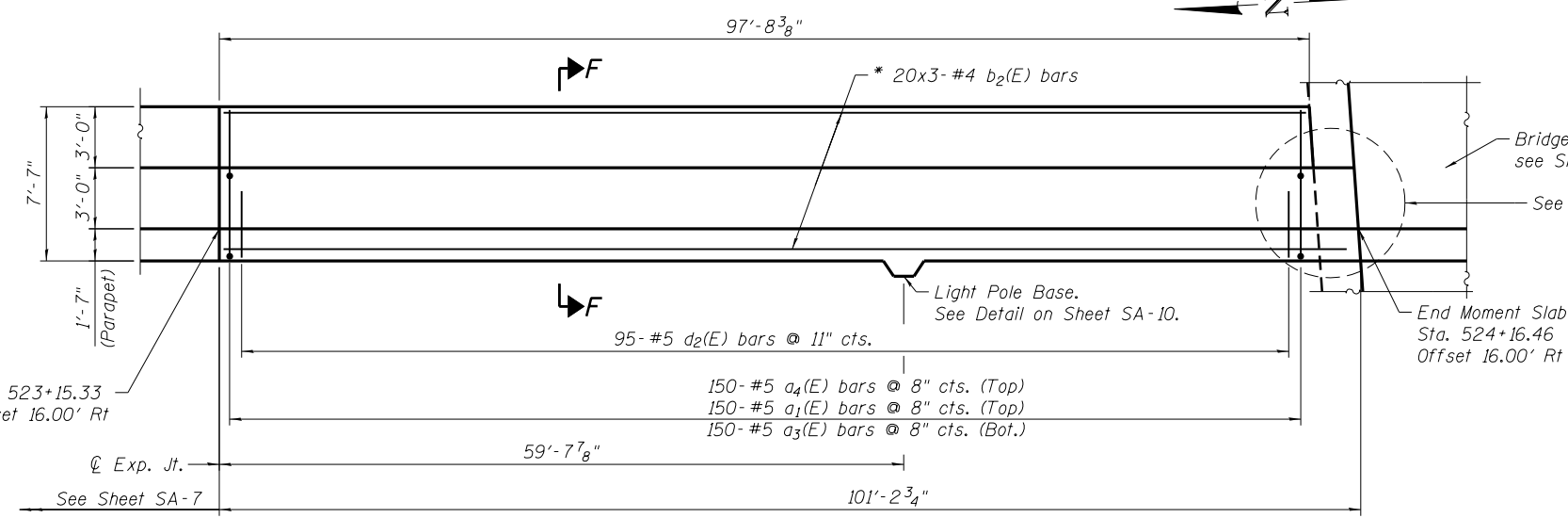
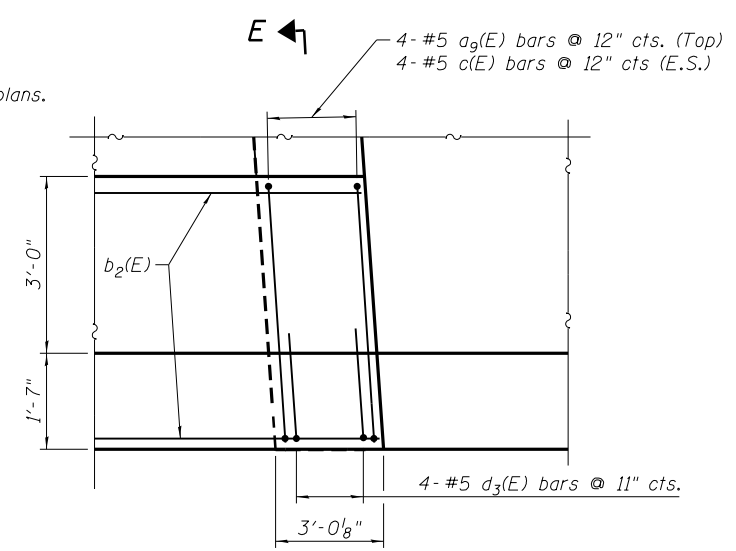


**ELEVATION - WEST MOMENT SLAB**  
(Looking East)

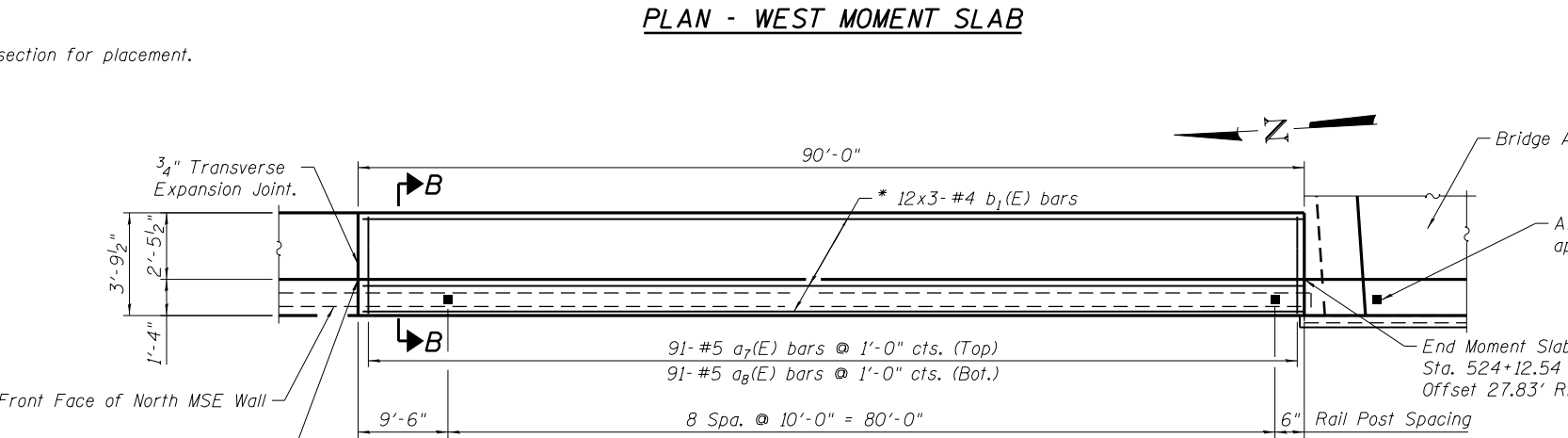
**MIN. BAR LAP**  
#4 bar = 2'-11"  
#8 bar = 6'-9"



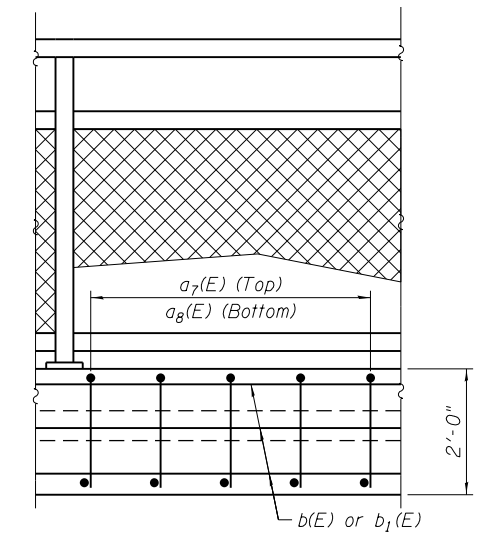
**PLAN - WEST MOMENT SLAB**



**DETAIL A**



**PLAN - MULTI-USE PATH MOMENT SLAB**



**TYPICAL ELEVATION - MULTI-USE PATH MOMENT SLAB**

**NOTES:**

1. Bars indicated thus 7x2-#5 etc. indicates 7 lines of bars with 2 lengths per line.
2. F.F. = Front Face, B.F. = Back Face, E.S. = Each Side.
3. Offsets are to front face of parapet.
4. For sections B-B, E-E and F-F, see Sheet SA-9.
5. For Bar Bending Diagrams and Bill of Materials, see Sheet SA-11.
6. For Parapet Joint details, see Sheet SA-9.
7. For Transverse Contraction Joint details, see Sheet SA-10.
8. For Expansion Joint details, see Sheet SA-9.

N:\PROJECTS\030333\CONTRACT\1\Design\Structure\CAD\Retaining Wall 081-7002\081-7002\_08 West\_Moment\_Slab-2.dgn



USER NAME = mteng  
DESIGNED - APD  
CHECKED - BWS  
DRAWN - RD  
CHECKED - BWS  
PLOT SCALE = 1/4" = 1' / in.  
PLOT DATE = 3/11/2013

DESIGNED - APD  
CHECKED - BWS  
DRAWN - RD  
CHECKED - BWS  
REVISED -  
REVISED -  
REVISED -  
REVISED -

**STATE OF ILLINOIS**  
**DEPARTMENT OF TRANSPORTATION**

**WEST AND MULTI-USE PATH MOMENT SLABS (2 of 2)**  
**STRUCTURE NO. 081-7002**

F.A.P. RTE.	SECTION	COUNTY	TOTAL SHEETS	SHEET NO.
595	(142-1)R-1 AND 142-1)B	ROCK ISLAND	507	334
				CONTRACT NO. 64B84

SHEET NO. SA-8 OF SA-16 SHEETS

ILLINOIS FED. AID PROJECT