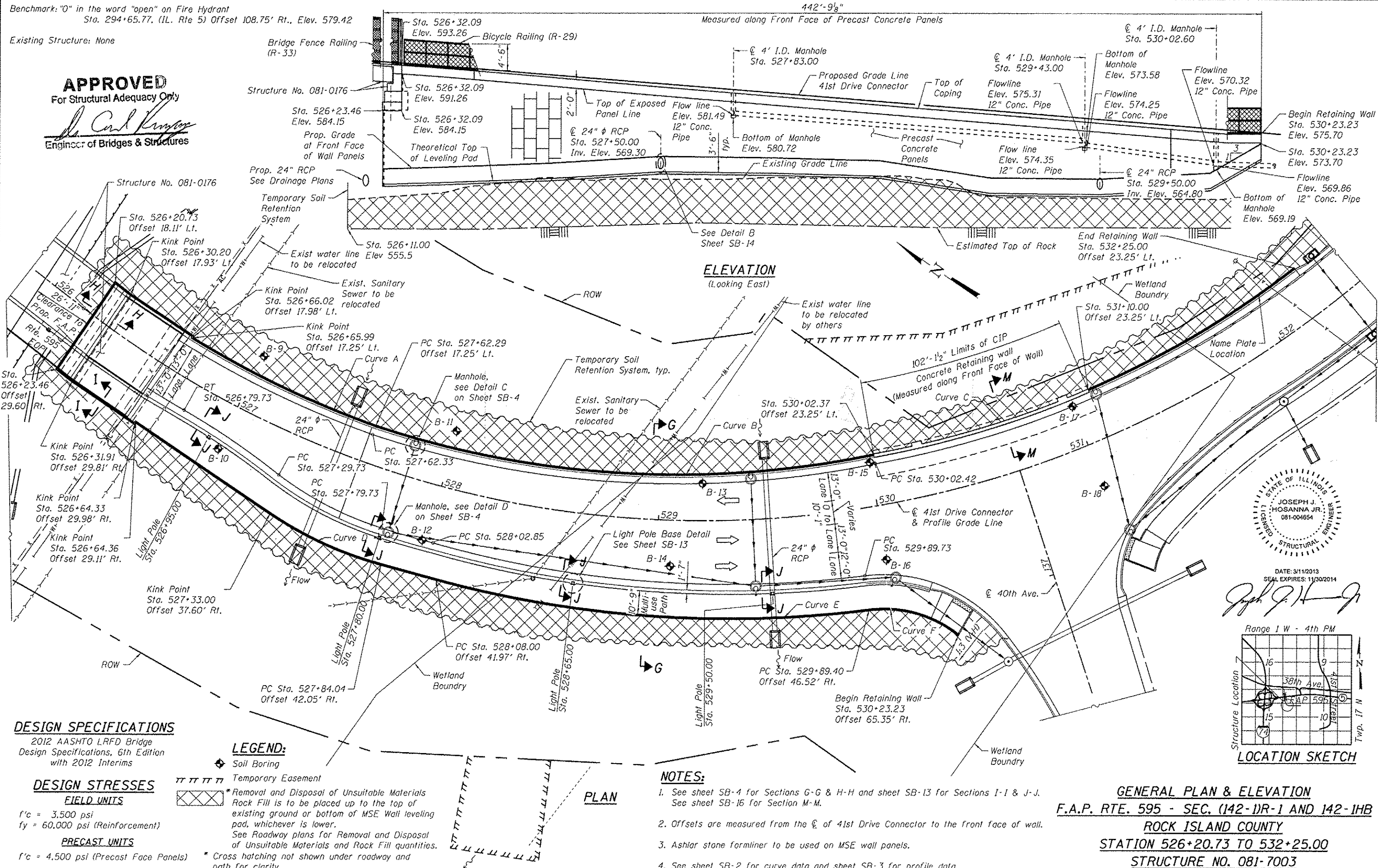


Benchmark: "O" in the word "open" on Fire Hydrant
Sta. 294+65.77. (IL. Rte 5) Offset 108.75' Rt., Elev. 579.42

Existing Structure: None

APPROVED
For Structural Adequacy Only

Carl Kingston
Engineer of Bridges & Structures



ELEVATION
(Looking East)

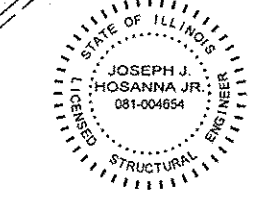
PLAN

DESIGN SPECIFICATIONS
2012 AASHTO LRFD Bridge
Design Specifications, 6th Edition
with 2012 Interims

DESIGN STRESSES
FIELD UNITS
f'c = 3,500 psi
fy = 60,000 psi (Reinforcement)
PRECAST UNITS
f'c = 4,500 psi (Precast Face Panels)

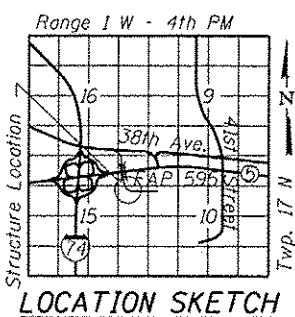
LEGEND:
Soil Boring
Temporary Easement
Removal and Disposal of Unsuitable Materials
Rock Fill is to be placed up to the top of existing ground or bottom of MSE Wall leveling pad, whichever is lower.
See Roadway plans for Removal and Disposal of Unsuitable Materials and Rock Fill quantities.
Cross hatching not shown under roadway and path for clarity.

NOTES:
1. See sheet SB-4 for Sections G-G & H-H and sheet SB-13 for Sections I-I & J-J. See sheet SB-16 for Section M-M.
2. Offsets are measured from the centerline of 41st Drive Connector to the front face of wall.
3. Ashlar stone formliner to be used on MSE wall panels.
4. See sheet SB-2 for curve data and sheet SB-3 for profile data.



DATE: 3/11/2013
SEAL EXPIRES: 11/30/2014

Joseph J. Hosanna Jr.



GENERAL PLAN & ELEVATION
F.A.P. RTE. 595 - SEC. (142-11R-1 AND 142-11B)
ROCK ISLAND COUNTY
STATION 526+20.73 TO 532+25.00
STRUCTURE NO. 081-7003



USER NAME: rdonley
DESIGNED: SMY
CHECKED: BWS
DRAWN: RD
CHECKED: BWS
PLOT SCALE: 4800" = 1"
PLOT DATE: 3/21/2013

REVISIONS:
REVISIONS:
REVISIONS:
REVISIONS:

STATE OF ILLINOIS
DEPARTMENT OF TRANSPORTATION

SHEET NO. SB-1 OF SB-21 SHEETS

F.A.P. RTE.	SECTION	COUNTY	TOTAL SHEETS	SHEET NO.
595	(142-11R-1 and 142-11B)	ROCK ISLAND	507	343

CONTRACT NO. 64884
ILLINOIS FED. AID PROJECT