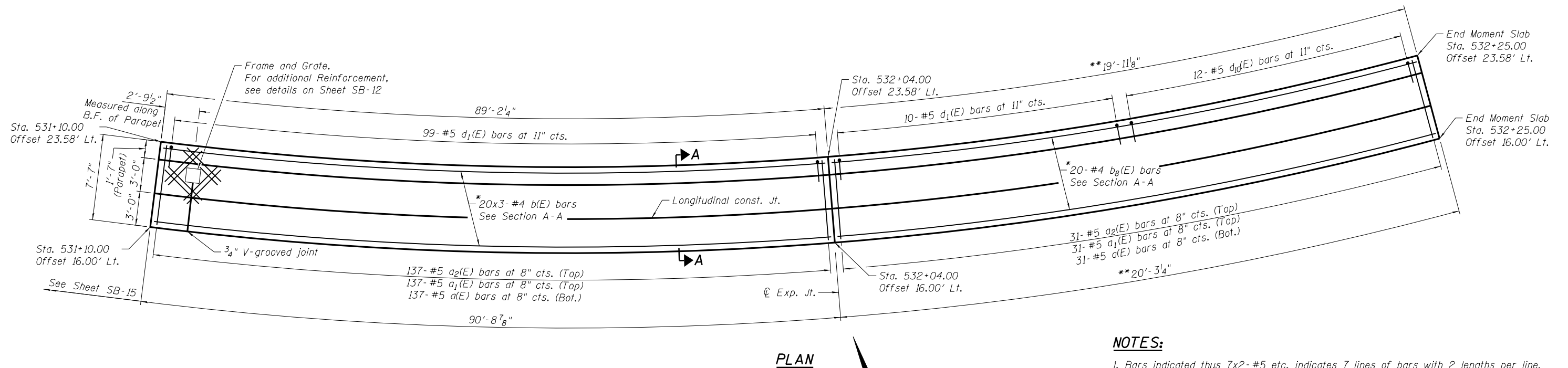


ELEVATION
Looking East



PLAN

MIN. BAR LAP

#4 bar = 2'-11"
#8 bar = 6'-9"

* Bend and cut in field as required.

** Drawing is stretched to show reinforcement detailing more clearly.

NOTES:

1. Bars indicated thus 7x2-#5 etc. indicates 7 lines of bars with 2 lengths per line.
2. F.F. = Front Face & B.F. = Back Face.
3. For Section A-A, see Sheet SB-12. For Sections Q-Q, R-R & S-S, see Sheet SB-14.
4. For Section thru Parapet, Bar Diagrams and Bill of Materials, see Sheet SB-14.
5. For Parapet Joint details, see Sheet SB-12.
6. Cut e15(E) bars as needed to alleviate congestion near end of parapet.
7. For Expansion Joint details, see Sheet SB-12.
8. For Transverse Contraction Joint details, see Sheet SB-13.

N:\PROJECTS\030333\CONTRACT\1\Design\Structure\CAD\Retaining Wall\081-7003\081-7003_07_East_Moment_Slab_3.dgn



USER NAME = mteng	DESIGNED - SMY	REVISED -
	CHECKED - BWS	REVISED -
PLOT SCALE = 1/4" = 1' / in.	DRAWN - SRG	REVISED -
PLOT DATE = 3/11/2013	CHECKED - BWS	REVISED -

**STATE OF ILLINOIS
DEPARTMENT OF TRANSPORTATION**

**EAST MOMENT SLAB PLAN & ELEVATION (3 OF 3)
STRUCTURE NO. 081-7003**

SHEET NO. SB-7 OF SB-21 SHEETS

F.A.P. RTE.	SECTION	COUNTY	TOTAL SHEETS	SHEET NO.
595	(142-11R-1 and 142-11B)	ROCK ISLAND	507	349
CONTRACT NO. 64B84				

ILLINOIS FED. AID PROJECT