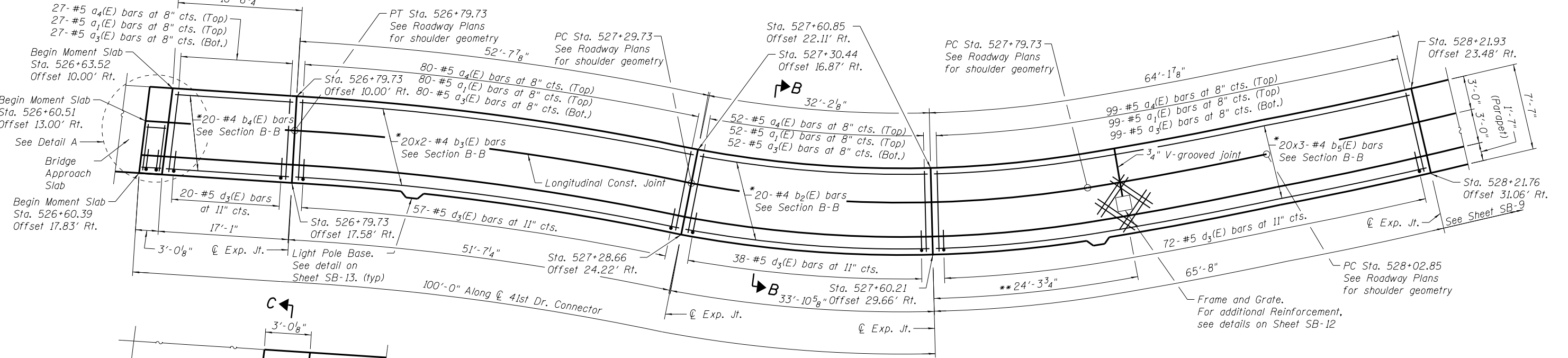
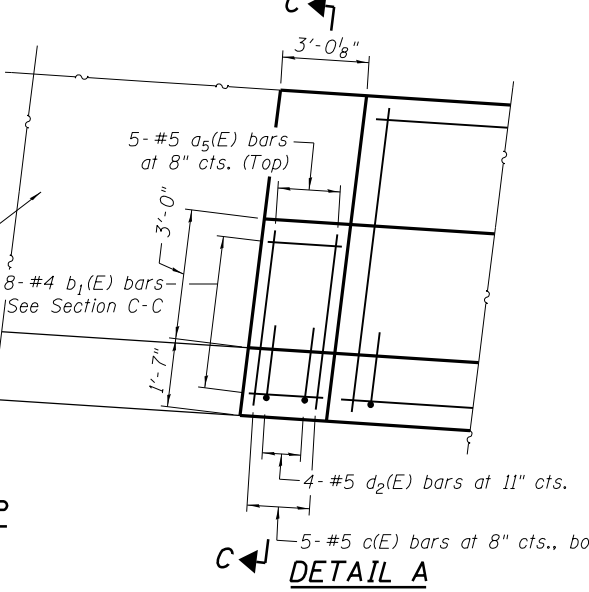


**ELEVATION**  
Looking East



**PLAN**



**DETAIL A**

**MIN. BAR LAP**  
#4 bar = 2'-11"  
#8 bar = 6'-9"

\* Bend and cut in field as required.  
\*\* Measured along back face of parapet.

**NOTES:**

1. Bars indicated thus 7x2-#5 etc. indicates 7 lines of bars with 2 lengths per line.
2. F.F. = Front Face & B.F. = Back Face.
3. For Sections B-B & C-C, see Sheet SB-12.
4. For Section thru Parapet, Bar Diagrams and Bill of Materials, see Sheet SB-14.
5. For Parapet Joint details, see Sheet SB-12.
6. For Expansion Joint details, see Sheet SB-12.
7. For Transverse Contraction Joint details, see Sheet SB-13.

N:\PROJECTS\081-7003\CONTRACT\1\Design\Structure\CAD\Retaining Wall 081-7003\081-7003\_08\_West\_Moment\_Slab.dgn



USER NAME = mteng	DESIGNED - SMY	REVISED -
	CHECKED - BWS	REVISED -
PLOT SCALE = 1/4" = 1' / in.	DRAWN - SRG	REVISED -
PLOT DATE = 3/11/2013	CHECKED - BWS	REVISED -

**STATE OF ILLINOIS**  
**DEPARTMENT OF TRANSPORTATION**

**WEST MOMENT SLAB PLAN & ELEVATION (1 OF 3)**  
**STRUCTURE NO. 081-7003**  
SHEET NO. SB-8 OF SB-21 SHEETS

F.A.P. RTE.	SECTION	COUNTY	TOTAL SHEETS	SHEET NO.
595	(142-11R-1 and 142-11B)	ROCK ISLAND	507	350
				CONTRACT NO. 64B84
ILLINOIS FED. AID PROJECT				