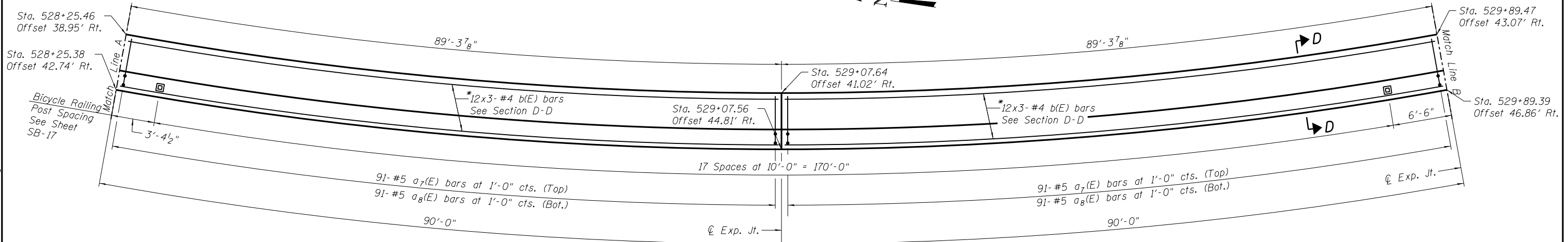
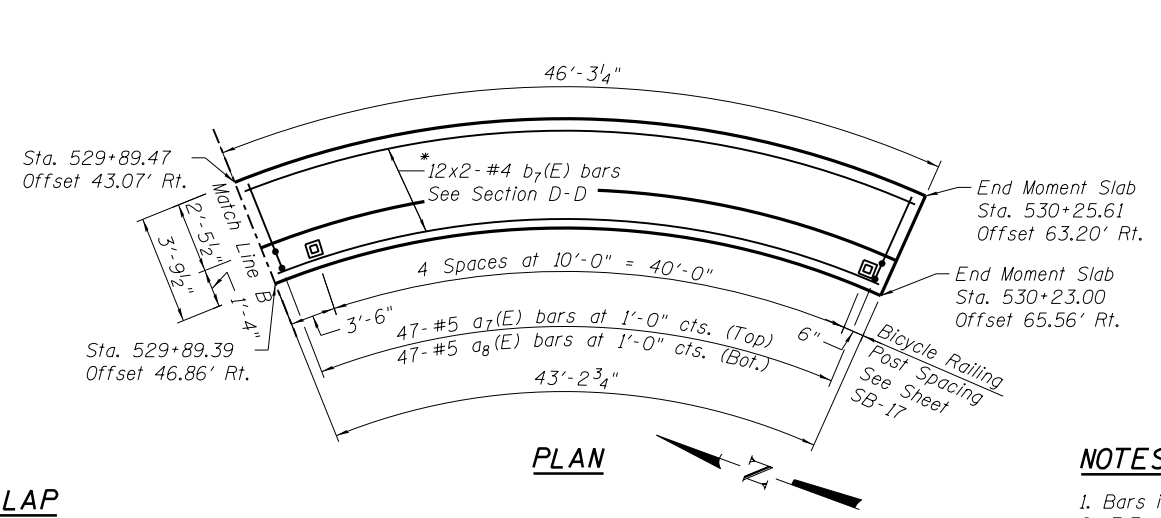


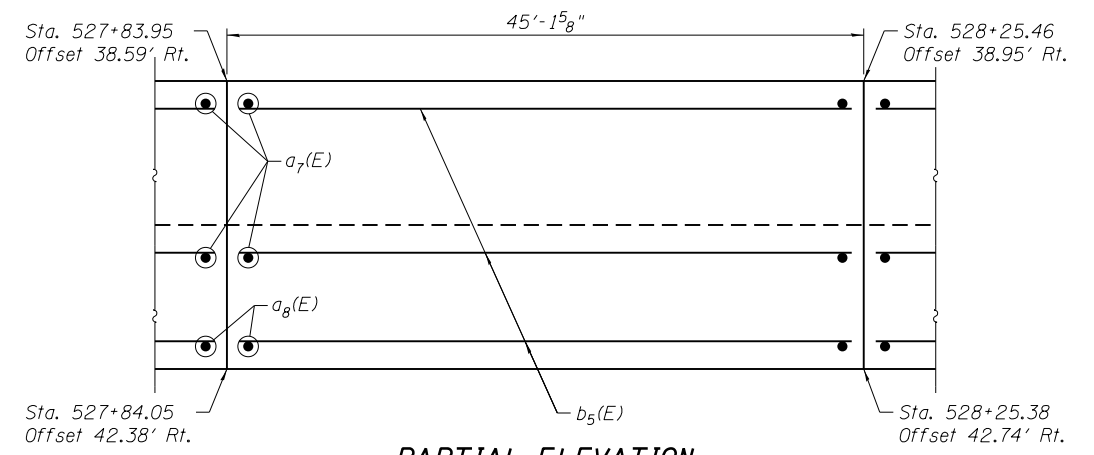
**PLAN**



**PLAN**



**PLAN**



**PARTIAL ELEVATION**

45'-1<sup>5</sup>/<sub>8</sub>" Section Shown  
Typical for full-length of  
Multi-use Moment Slab

**NOTES:**

1. Bars indicated thus 7x2-#5 etc. indicates 7 lines of bars with 2 lengths per line.
2. F.F. = Front Face & B.F. = Back Face.
3. For Section D-D, see Sheet SB-12.
4. For Bar Diagrams and Bill of Materials, see Sheet SB-14.
5. For Expansion Joint details, see Sheet SB-12.

**MIN. BAR LAP**  
#4 bar = 2'-11"

\* Bend and cut in field as required.

N:\PROJECTS\030333\03\CONTRACT\1\Design\Structure\CAD\Retaining Wall 081-7003\081-7003.11\_MUPPath\_Moment\_Slab.dgn



USER NAME = mteng	DESIGNED - SMY	REVISED -
PLOT SCALE = 1/4" = 1' in.	CHECKED - BWS	REVISED -
PLOT DATE = 3/11/2013	DRAWN - SRG	REVISED -
	CHECKED - BWS	REVISED -

**STATE OF ILLINOIS**  
**DEPARTMENT OF TRANSPORTATION**

**MULTI-USE PATH MOMENT SLAB PLAN**  
**STRUCTURE NO. 081-7003**

SHEET NO. SB-11 OF SB-21 SHEETS

F.A.P. RTE.	SECTION	COUNTY	TOTAL SHEETS	SHEET NO.
595	(142-11R-1 and 142-11B)	ROCK ISLAND	507	353
				CONTRACT NO. 64B84
ILLINOIS FED. AID PROJECT				