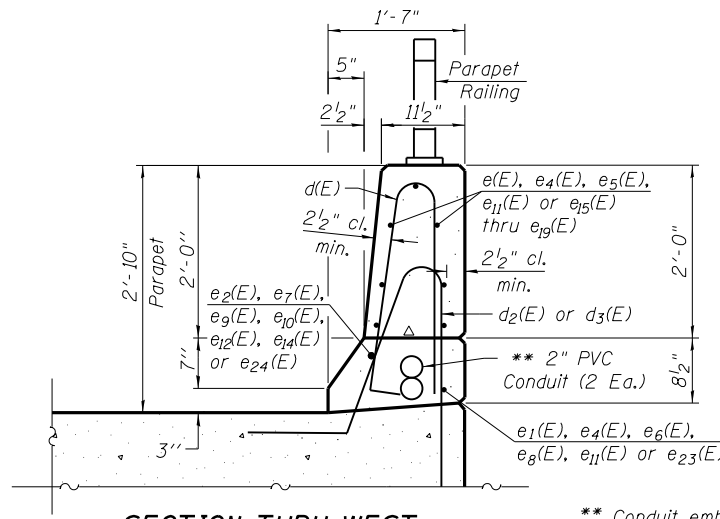
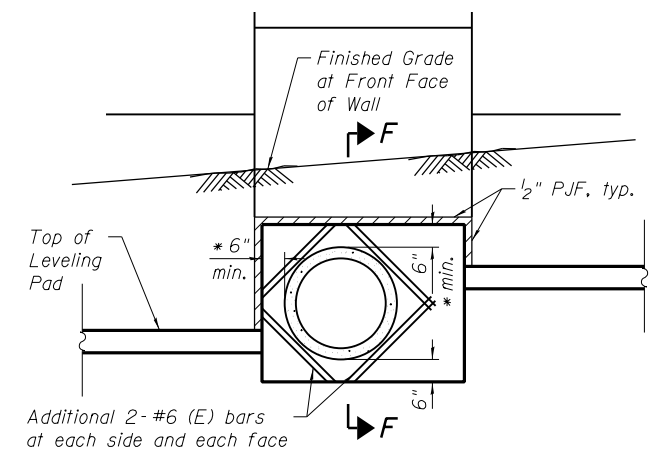


SECTION THRU EAST MOMENT SLAB PARAPET

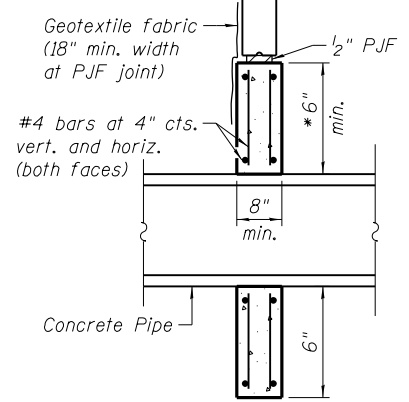


SECTION THRU WEST MOMENT SLAB PARAPET

** Conduit embedded in structure, 2" Dia., PVC



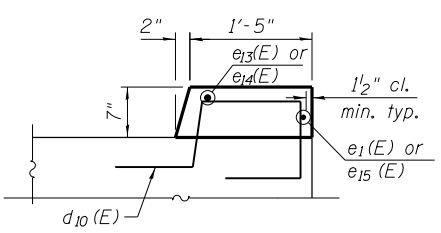
DETAIL B



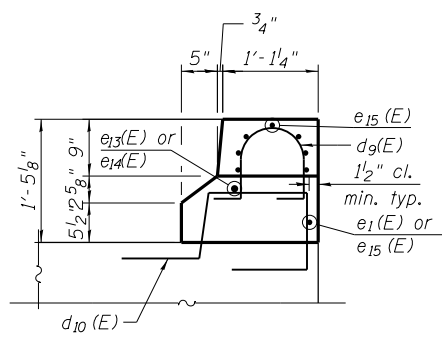
SECTION F-F

* Cast-in-place (C.I.P.) panel dimensions to be determined by precast panel supplier. Cost of C.I.P. panels including reinforcement in the C.I.P. panel and geotextile fabric is included in the pay item "Mechanically Stabilized Earth Retaining Wall".

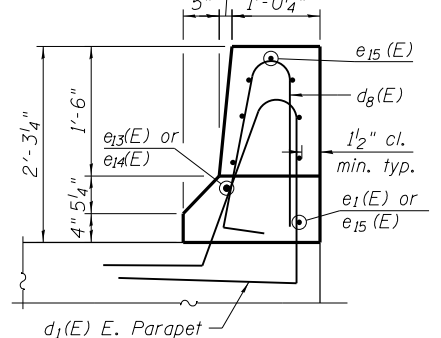
*** See Traffic Signal Plans



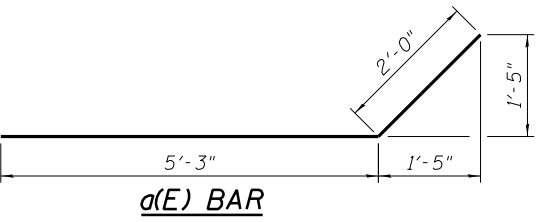
SECTION S-S



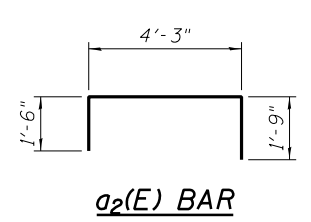
SECTION R-R



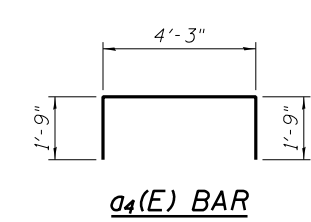
SECTION Q-Q



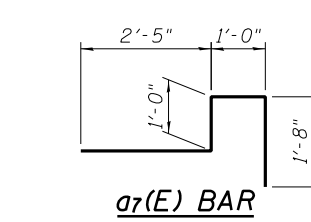
a(E) BAR



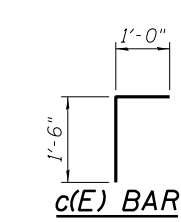
a2(E) BAR



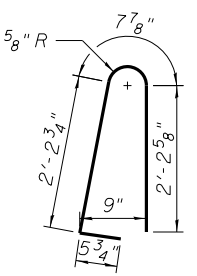
a4(E) BAR



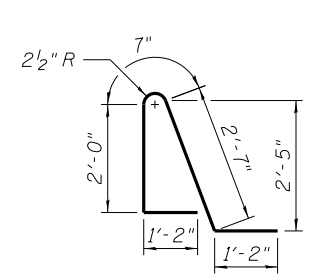
a7(E) BAR



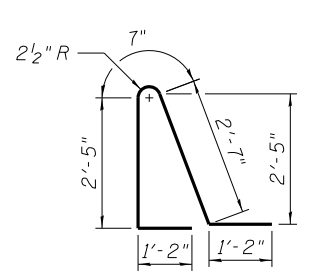
c(E) BAR



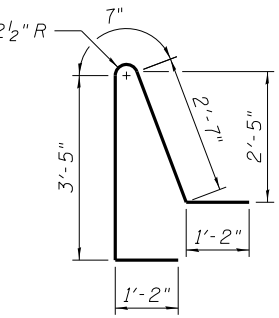
d(E) BAR



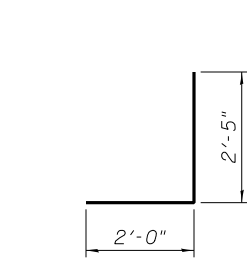
d1(E) BAR



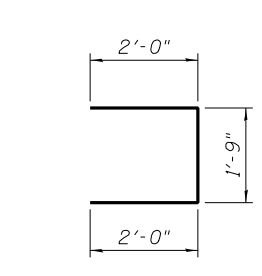
d2(E) BAR



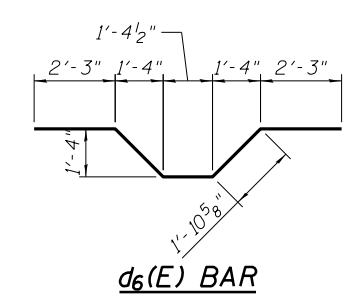
d3(E) BAR



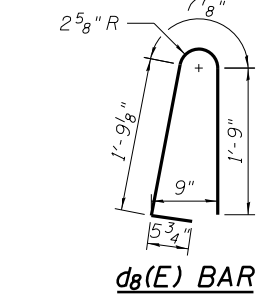
d4(E) BAR



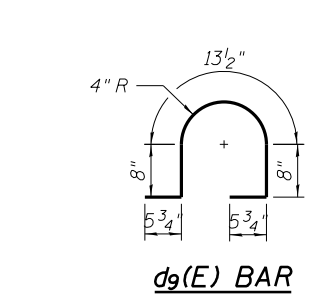
d5(E) BAR



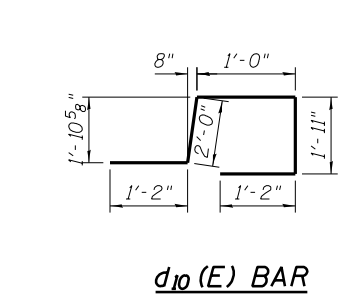
d6(E) BAR



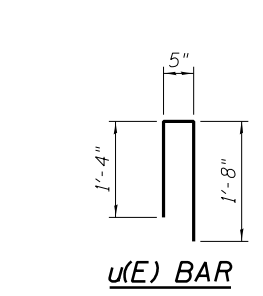
d8(E) BAR



d9(E) BAR



d10(E) BAR



u(E) BAR

NOTES:

- See Sheets SB-5 thru SB-10 for d1(E), d2(E), d3(E) & d10(E) spacing.
- Protective Coat is applied to top of exposed moment slabs, top & inside vertical faces of parapets and top of exposed multi-use path moment slab.

BILL OF MATERIAL

Bar	No.	Size	Length	Shape
a(E)	663	# 5	7'-3"	—
a1(E)	1245	# 5	4'-10"	—
a2(E)	663	# 5	7'-6"	—
a3(E)	582	# 5	7'-3"	—
a4(E)	582	# 5	7'-9"	—
a5(E)	10	# 5	4'-3"	—
a6(E)	96	# 5	4'-8"	—
a7(E)	409	# 5	6'-1"	—
a8(E)	409	# 5	2'-8"	—
b(E)	432	# 4	32'-1"	—
b1(E)	16	# 4	2'-8"	—
b2(E)	20	# 4	33'-7"	—
b3(E)	76	# 4	27'-2"	—
b4(E)	20	# 4	16'-9"	—
b5(E)	84	# 4	23'-11"	—
b6(E)	24	# 4	29'-4"	—
b7(E)	24	# 4	24'-6"	—
b8(E)	20	# 4	19'-11"	—
b9(E)	40	# 4	28'-9"	—
b10(E)	20	# 4	34'-11"	—
c(E)	20	# 5	2'-6"	—
d(E)	863	# 5	5'-7"	—
d1(E)	467	# 5	7'-6"	—
d2(E)	8	# 5	7'-11"	—
d3(E)	408	# 5	8'-11"	—
d4(E)	12	# 6	4'-5"	—
d5(E)	12	# 6	5'-9"	—
d6(E)	32	# 6	9'-8"	—
d8(E)	8	# 5	4'-8"	—
d9(E)	8	# 5	3'-5"	—
d10(E)	24	# 5	7'-3"	—
e(E)	182	# 4	14'-8"	—
e1(E)	18	# 4	32'-1"	—
e2(E)	17	# 8	34'-7"	—
e3(E)	28	# 4	15'-1"	—
e4(E)	15	# 4	16'-9"	—
e5(E)	14	# 4	16'-7"	—
e6(E)	3	# 4	34'-5"	—
e7(E)	2	# 8	36'-1"	—
e8(E)	2	# 4	27'-2"	—
e9(E)	2	# 8	29'-1"	—
e10(E)	1	# 8	16'-9"	—
e11(E)	8	# 4	2'-8"	—
e12(E)	1	# 8	2'-8"	—
e13(E)	1	# 8	19'-8"	—
e14(E)	1	# 8	29'-1"	—
e15(E)	36	# 4	19'-8"	—
e16(E)	7	# 4	9'-1"	—
e17(E)	7	# 4	11'-4"	—
e18(E)	7	# 4	12'-8"	—
e19(E)	28	# 4	16'-1"	—
e20(E)	14	# 4	17'-1"	—
e21(E)	21	# 4	17'-8"	—
e22(E)	2	# 4	28'-4"	—
e23(E)	1	# 4	33'-7"	—
e24(E)	1	# 8	33'-7"	—
e25(E)	2	# 8	30'-3"	—
e26(E)	1	# 8	34'-5"	—
e27(E)	7	# 4	9'-8"	—
Concrete Superstructure		Cu. Yd.	542.5	
Protective Coat		Sq. Yd.	930	
Reinforcement Bars, Epoxy Coated		Pound	65,140	

COPING BILL OF MATERIAL

(For Information Only)

Bar	No.	Size	Length	Shape
d11(E)	81	# 4	1'-5"	—
h5(E)	10	# 4	25'-7"	—
h6(E)	20	# 4	18'-9"	—
h7(E)	10	# 4	9'-2"	—
u(E)	81	# 4	3'-5"	—
v11(E)	10	# 4	8'-9"	—

N:\PROJECTS\081-7003\CONTRACT\1\Design\Structure\CAD\Retaining Wall_081-7003\081-7003_14_Details-3.dgn

Clorba Group, Inc.
CONSULTING ENGINEERS
6501 North Cumberland Avenue
Suite 202 Chicago, Illinois 60656
Tel: 773-774-0057
Fax: 773-774-0114
Email: clorba@clorba.com

USER NAME = mteng	DESIGNED - SMY	REVISED -
PLOT SCALE = 2/8" 1" = 10'	CHECKED - BWS	REVISED -
PLOT DATE = 3/11/2013	DRAWN - RD	REVISED -
	CHECKED - BWS	REVISED -

**STATE OF ILLINOIS
DEPARTMENT OF TRANSPORTATION**

**DETAILS - 3
STRUCTURE NO. 081-7003**
SHEET NO. SB-14 OF SB-21 SHEETS

F.A.P. RTE.	SECTION	COUNTY	TOTAL SHEETS	SHEET NO.
595	(142-11R-1 and 142-11B)	ROCK ISLAND	507	356
				CONTRACT NO. 64B84
ILLINOIS FED. AID PROJECT				