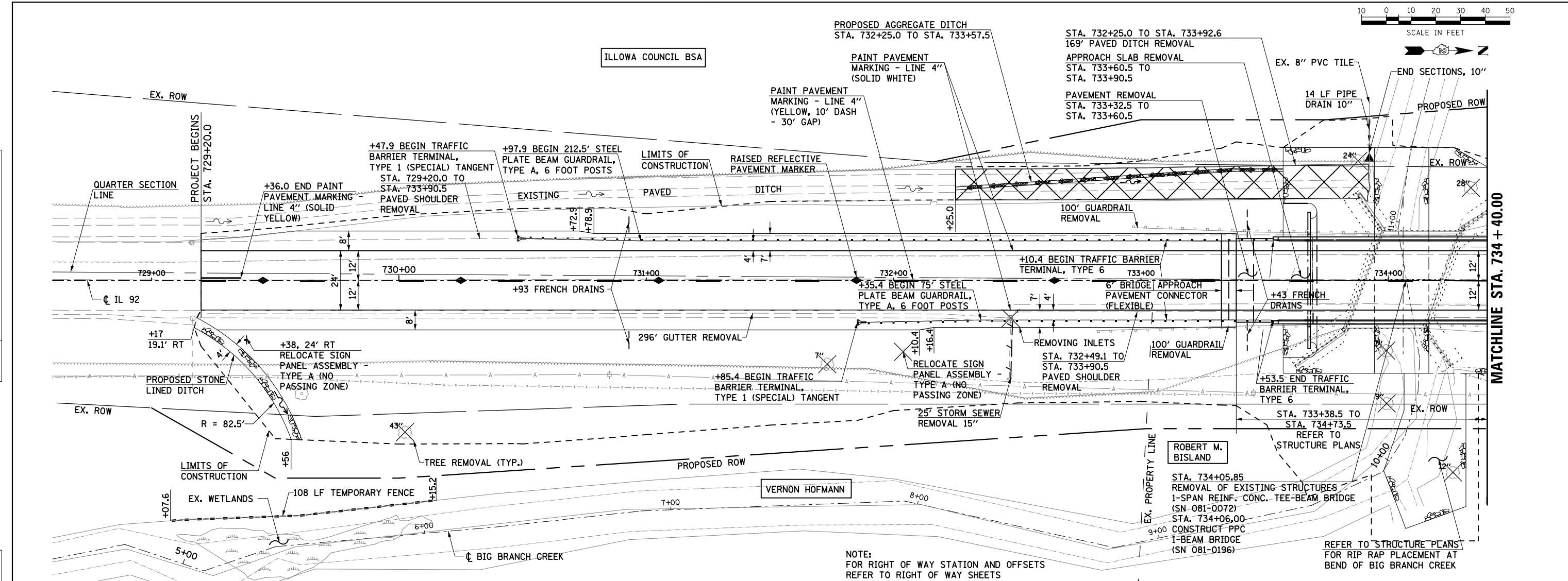
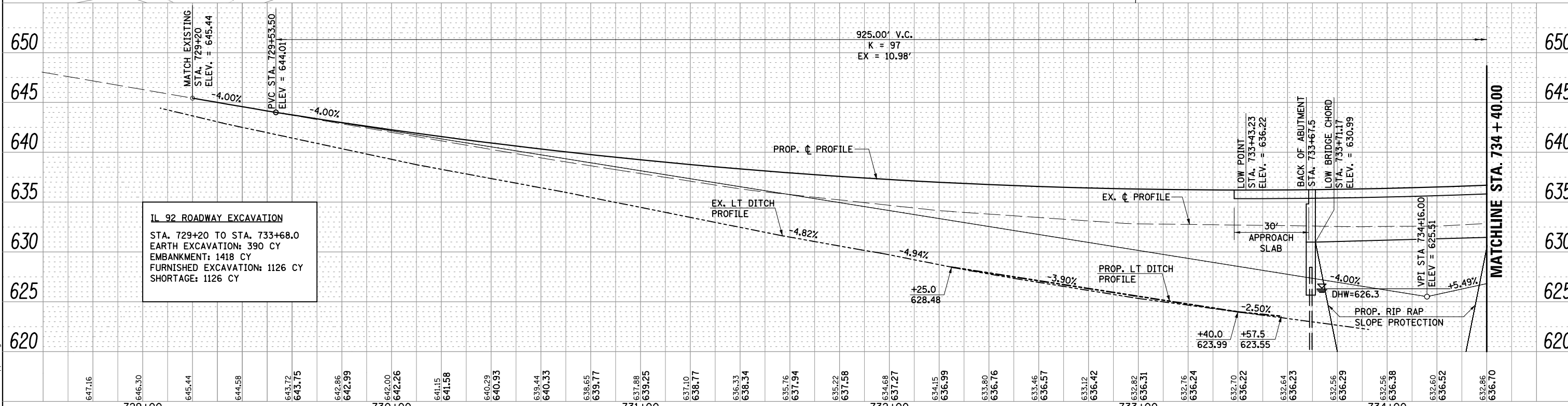


PLAN	SURVEYED	BY	DATE
	PLOTTED		
	ALIGNED		
	CHECKED		
	NOTED		
	FILE NAME		

PROFILE	SURVEYED	BY	DATE
	PLOTTED		
	GRADES CHECKED		
	STRUCTURE		
	NOTATIONS CHKD		



NOTE:  
FOR RIGHT OF WAY STATION AND OFFSETS  
REFER TO RIGHT OF WAY SHEETS



**IL 92 ROADWAY EXCAVATION**  
 STA. 729+20 TO STA. 733+68.0  
 EARTH EXCAVATION: 390 CY  
 EMBANKMENT: 1418 CY  
 FURNISHED EXCAVATION: 1126 CY  
 SHORTAGE: 1126 CY

FILE NAME = D206907\_sht-pp-01.dgn



USER NAME = mszmur-lo	DESIGNED KAC	REVISED
	DRAWN KMB	REVISED
PLOT SCALE = 40.0000' / in.	CHECKED KAC	REVISED
PLOT DATE = 6/19/2013	DATE 05-03-2013	REVISED

**STATE OF ILLINOIS  
DEPARTMENT OF TRANSPORTATION**

<b>IL 92 OVER BIG BRANCH CREEK IL 92 PLAN &amp; PROFILE</b>	
SCALE: 1" = 20'	SHEET NO. 1 OF 2 SHEETS
STA. 728+40	TO STA. 734+40

F.A.P. RT. 599	SECTION 103MFT-BR	COUNTY ROCK ISLAND	TOTAL SHEETS 88	SHEET NO. 21
FED. ROAD DIST. NO. ILLINOIS		FED. AID PROJECT		

MATCHLINE STA. 734 + 40.00