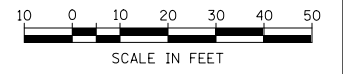
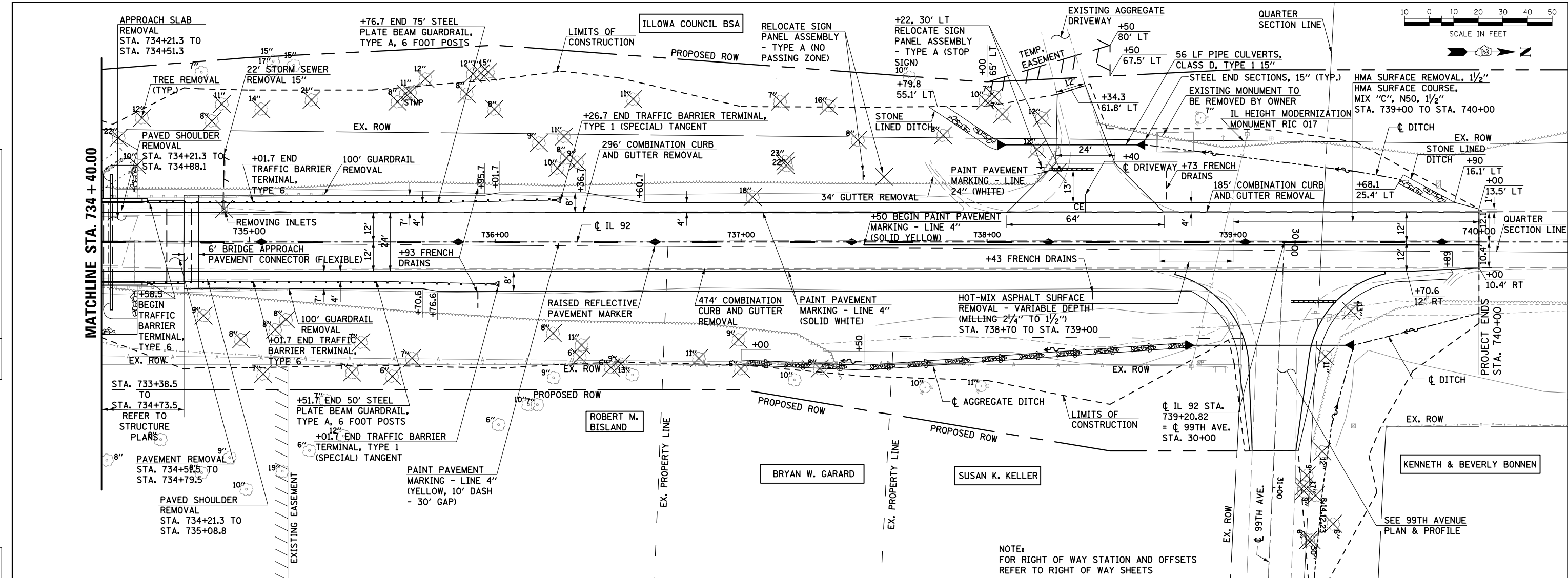
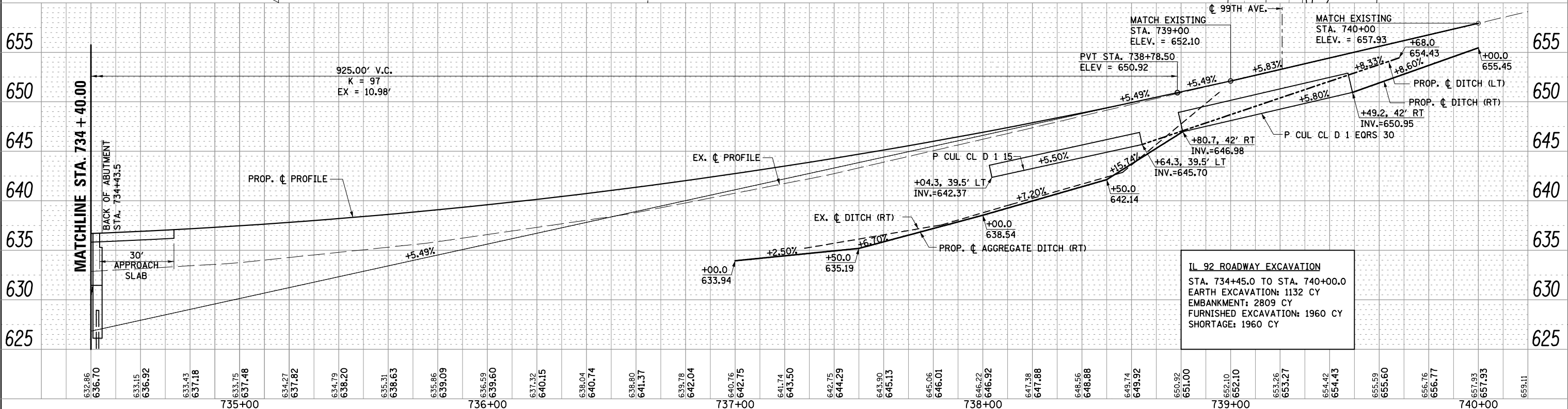


PLAN	SURVEYED	DATE
	PLOTTED	
	ALIGNED	
	CHECKED	
	NOTED	
	FILED	
	NO.	

PROFILE	SURVEYED	DATE
	PLOTTED	
	GRADES	
	CHECKED	
	STRUCTURE	
	NOTATIONS	
	CHKD	
	NO.	



NOTE:
FOR RIGHT OF WAY STATION AND OFFSETS
REFER TO RIGHT OF WAY SHEETS



IL 92 ROADWAY EXCAVATION
STA. 734+45.0 TO STA. 740+00.0
EARTH EXCAVATION: 1132 CY
EMBANKMENT: 2809 CY
FURNISHED EXCAVATION: 1960 CY
SHORTAGE: 1960 CY

FILE NAME = D206907_sht_pp_02.dgn



USER NAME = mszmurlo	DESIGNED KAC	REVISED
	DRAWN KMB	REVISED
PLOT SCALE = 40.0000' / in.	CHECKED KAC	REVISED
PLOT DATE = 6/19/2013	DATE 05-03-2013	REVISED

STATE OF ILLINOIS
DEPARTMENT OF TRANSPORTATION

IL 92 OVER BIG BRANCH CREEK
IL 92 PLAN & PROFILE
SCALE: 1" = 20' SHEET NO. 2 OF 2 SHEETS STA. 734+40 TO STA. 740+40

F.A.P. RTE. 599	SECTION 103MFT-BR	COUNTY ROCK ISLAND	TOTAL SHEETS 88	SHEET NO. 22
CONTRACT NO. 64D18			FED. ROAD DIST. NO. ILLINOIS FED. AID PROJECT	