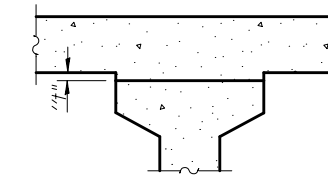


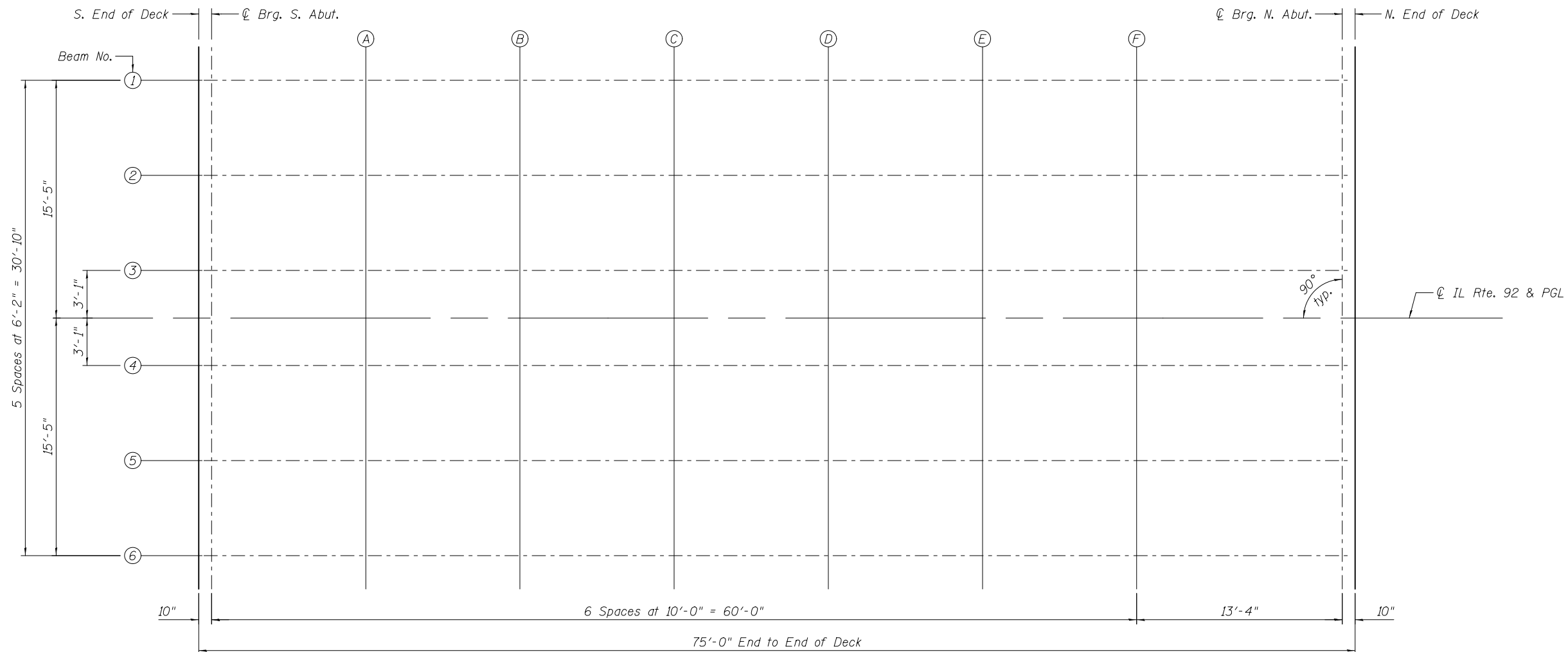
DEAD LOAD DEFLECTION DIAGRAM
(Includes weight of concrete, excluding beams).

Note:
The above deflections are not to be used in the field if the engineer is working from the grade elevations adjusted for dead load deflections as shown on Sheets 5 and 6 of 20.



To determine "t": After all precast prestressed beams have been erected, elevations of the top flanges of the beams shall be taken at intervals shown below. These elevations subtracted from the "Theoretical Grade Elevations Adjusted for Dead Load Deflections" shown on Sheets 5 and 6 of 20, minus slab thickness, equals the fillet heights "t" above top flanges of beams.

FILLET HEIGHTS



PLAN

(Sheet 1 of 3)

6/19/2013 5:32:03 PM 0810196_64D18_004_T0501.dgn



DESIGNED - MWS	REVISED -
CHECKED - TAY	REVISED -
DRAWN - MWS	REVISED -
CHECKED - BJM	REVISED -
PLOT DATE = 6/19/2013	

**STATE OF ILLINOIS
DEPARTMENT OF TRANSPORTATION**

**TOP OF SLAB ELEVATIONS
STRUCTURE NO. 081-0196**

SHEET NO. 4 OF 20 SHEETS

F.A.P.	SECTION	COUNTY	TOTAL SHEETS	SHEET NO.
599	103MFT-BR	ROCK ISLAND	88	35
CONTRACT NO. 64D18				
ILLINOIS FED. AID PROJECT				