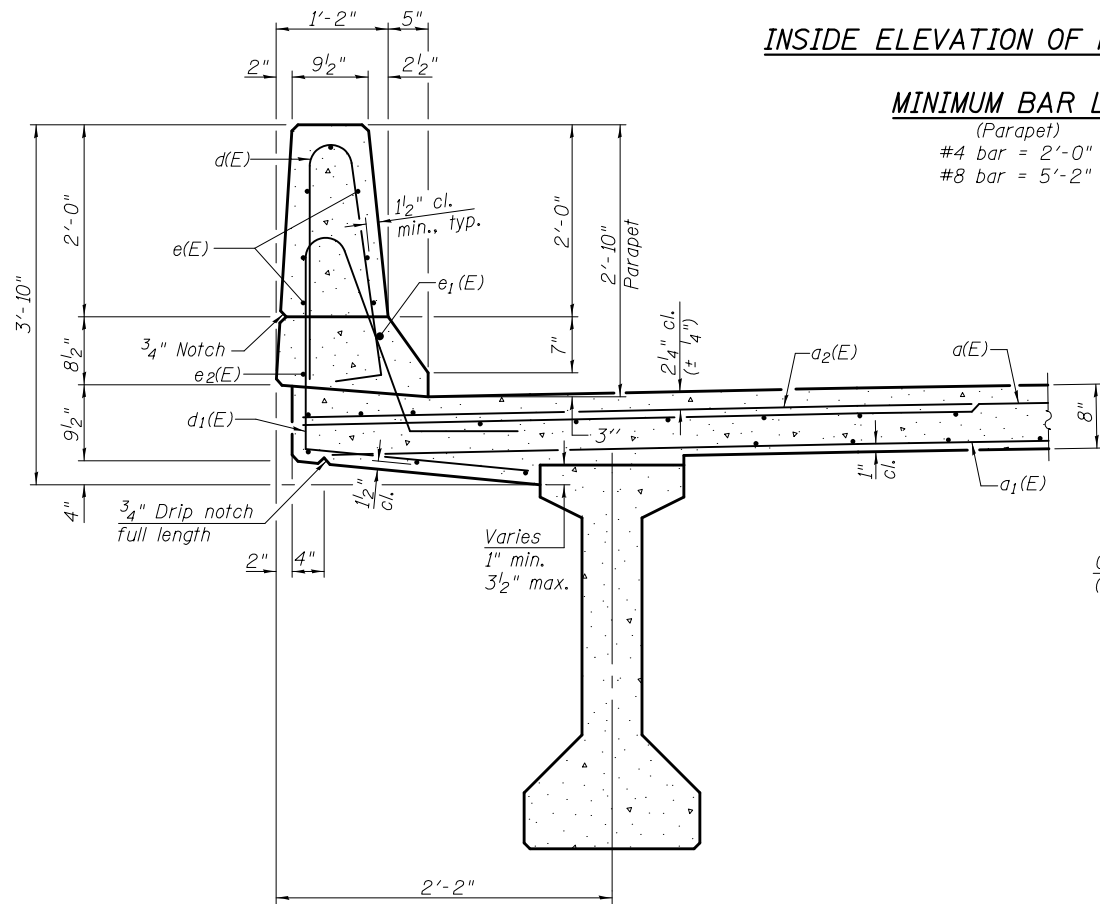


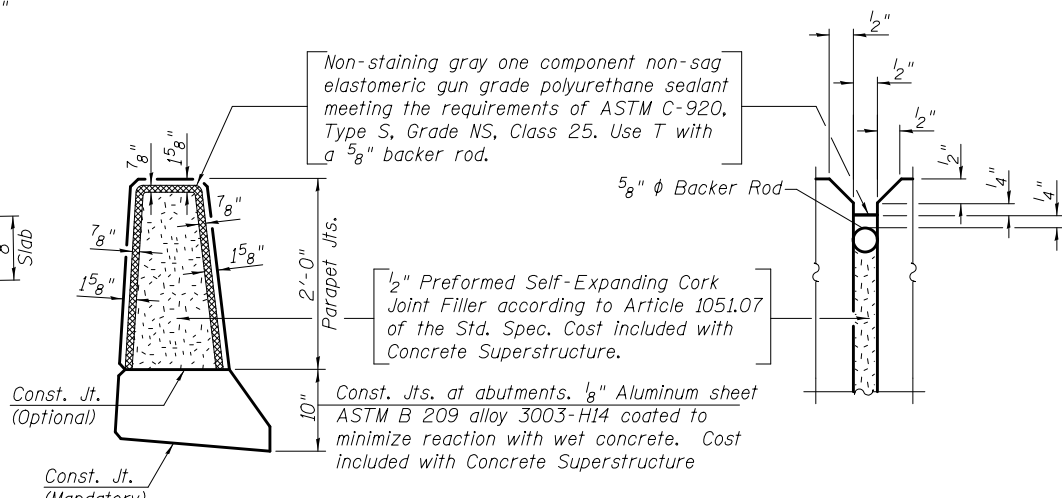
INSIDE ELEVATION OF PARAPET

MINIMUM BAR LAP

(Parapet)
 #4 bar = 2'-0"
 #8 bar = 5'-2"

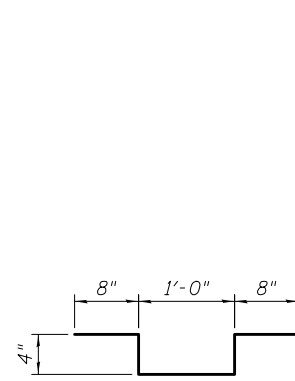


SECTION THRU PARAPET

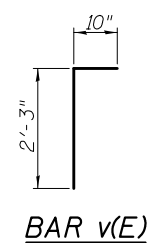


PARAPET JOINT DETAILS

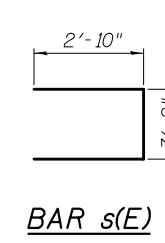
SECTION THRU FILLET NEAR ABUTMENT



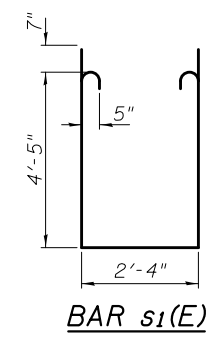
BAR z(E)



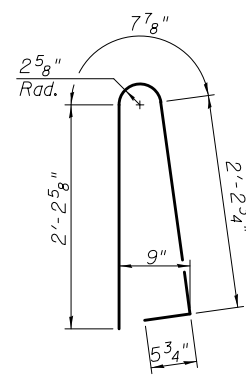
BAR v(E)



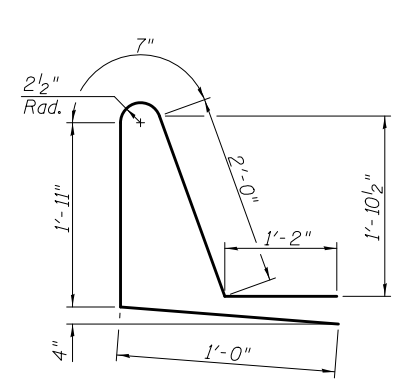
BAR s(E)



BAR s1(E)



BAR d(E)



BAR d1(E)

SUPERSTRUCTURE BILL OF MATERIAL

Bar	No.	Size	Length	Shape
a(E)	129	#5	34'-6"	—
a1(E)	91	#5	32'-10"	—
a2(E)	258	#6	6'-6"	—
b(E)	114	#5	26'-8"	—
b1(E)	124	#5	20'-8"	—
b2(E)	24	#4	10'-0"	—
d(E)	166	#5	5'-7"	⌋
d1(E)	166	#5	6'-8"	⌋
e(E)	56	#4	18'-5"	—
e1(E)	6	#8	28'-4"	—
e2(E)	6	#4	26'-3"	—
m(E)	10	#6	34'-10"	—
m1(E)	30	#6	5'-2"	—
m2(E)	12	#6	1'-7"	—
m3(E)	10	#6	4'-0"	—
m4(E)	4	#6	0'-11"	—
m5(E)	24	#5	4'-0"	—
s(E)	58	#5	8'-10"	⌋
s1(E)	58	#5	12'-4"	⌋
v(E)	72	#5	3'-1"	⌋
z(E)	120	#4	3'-0"	⌋
Concrete Superstructure		Cu. Yd.	89.1	
Bridge Deck Grooving		Sq. Yd.	250	
Protective Coat		Sq. Yd.	330	
Reinforcement Bars, Epoxy Coated		Pound	22,350	

Bars indicated thus 1 x 2-#8 etc. indicates 1 line of bars with 2 lengths per line.

6/19/2013 5:32:07 PM 0810196_64D18_010_SUP02.dgn



DESIGNED - MWS	REVISED -
CHECKED - TAY	REVISED -
DRAWN - MWS	REVISED -
CHECKED - BJM	REVISED -

**STATE OF ILLINOIS
DEPARTMENT OF TRANSPORTATION**

**SUPERSTRUCTURE DETAILS
STRUCTURE NO. 081-0196**

SHEET NO. 10 OF 20 SHEETS

F.A.P.	SECTION	COUNTY	TOTAL SHEETS	SHEET NO.
599	103MFT-BR	ROCK ISLAND	88	41
CONTRACT NO. 64D18				
ILLINOIS FED. AID PROJECT				