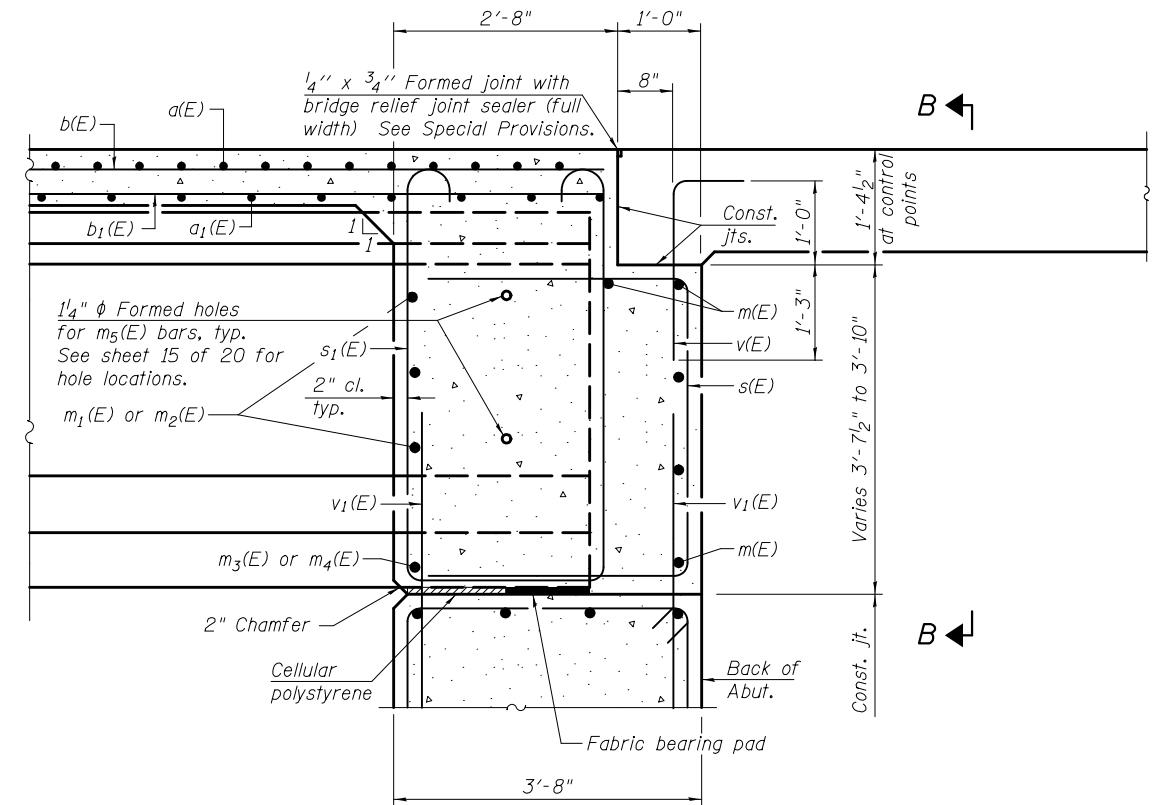
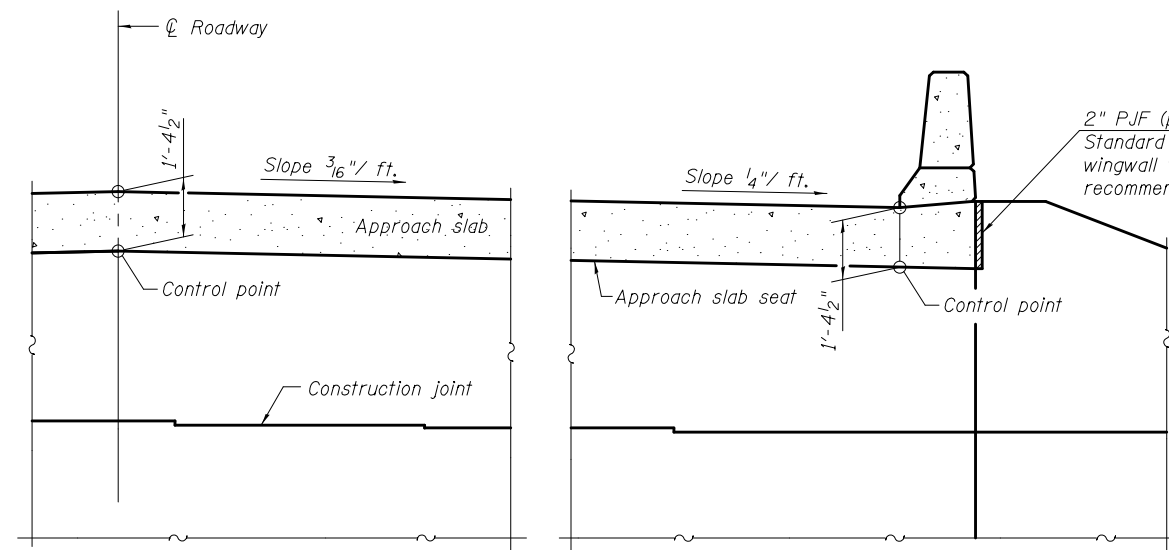


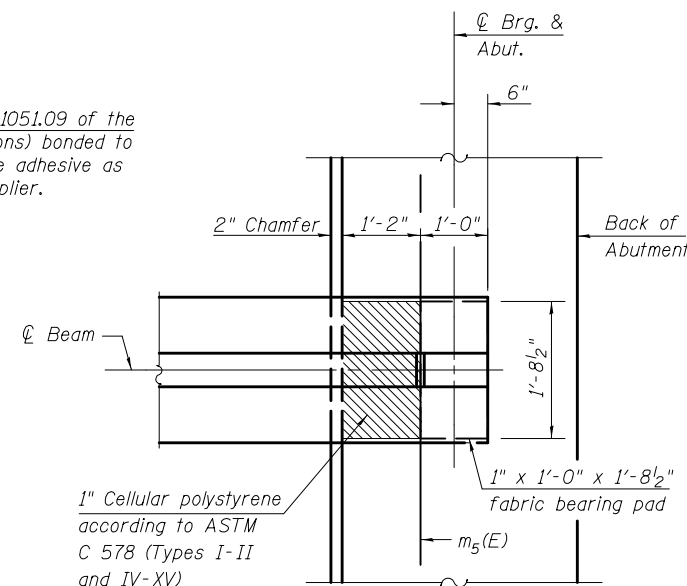
DIAPHRAGM ELEVATION AT ABUTMENT



SECTION A-A



SECTION B-B



PARTIAL PLAN AT ABUTMENT
(Showing bottom flange of beam)

Notes:
 Reinforcement bars in diaphragm are billed with superstructure on sheet 10 of 20.
 Concrete in diaphragm is included with Concrete Superstructure on sheet 10 of 20.
 For details of bars s(E), s1(E) and v(E), see sheet 10 of 20.
 The approach slab seat shall have a constant slope determined from the control points shown.
 Cost of cellular polystyrene is included with Concrete Superstructure.

6/19/2013 5:32:07 PM 0810196_64018_011_DIA01.dgn



DESIGNED - MWS	REVISED -
CHECKED - TAY	REVISED -
DRAWN - MWS	REVISED -
CHECKED - BJM	REVISED -

**STATE OF ILLINOIS
DEPARTMENT OF TRANSPORTATION**

**DIAPHRAGM DETAILS
STRUCTURE NO. 081-0196**

SHEET NO. 11 OF 20 SHEETS

F.A.P.	SECTION	COUNTY	TOTAL SHEETS	SHEET NO.
599	103MFT-BR	ROCK ISLAND	88	42
CONTRACT NO. 64D18				
ILLINOIS FED. AID PROJECT				