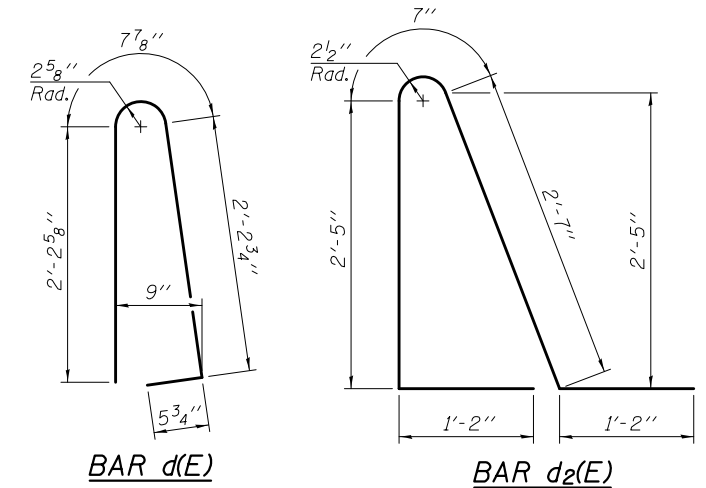


SECTION C-C

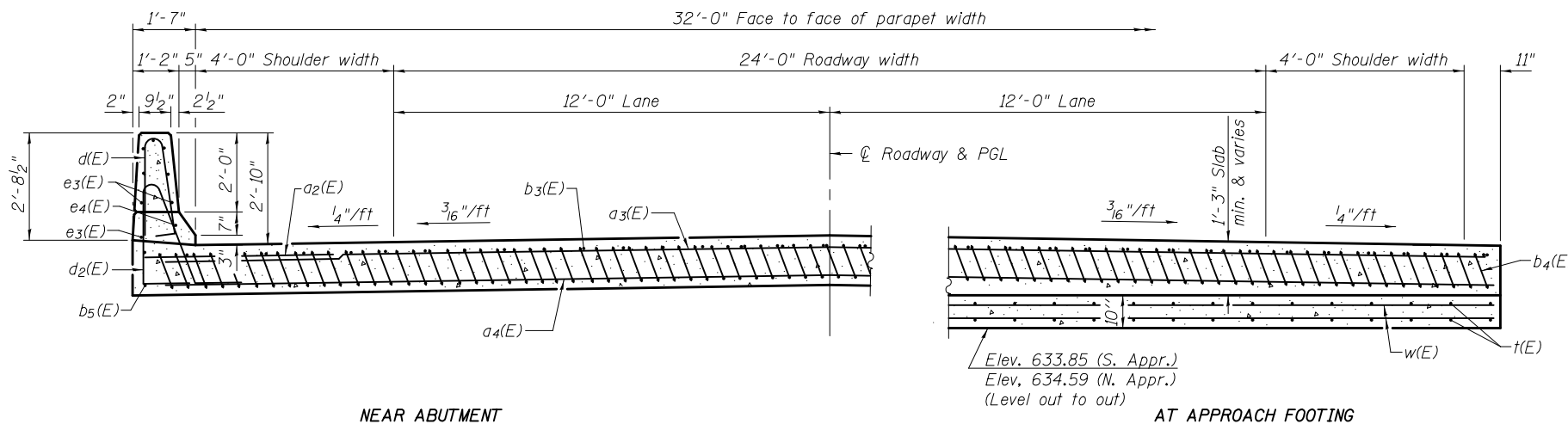
Notes:

See sheet 12 of 20 for Detail A and View B-B.
 Approach slab and parapet concrete shall be paid for as Concrete Superstructure.
 Approach footing concrete shall be paid for as Concrete Structures.
 Reinforcement shall be paid for as Reinforcement Bars, Epoxy Coated.
 For v(E) bar details, see sheet 10 of 20.
 The approach footing maximum applied service bearing pressure (Q_{max}) = 2.0 ksf.
 Cost of excavation for approach footing included with Concrete Structures.
 For Granular Backfill for Structures and drainage treatment details, see sheet 2 of 20.
 For additional parapet details, see sheet 10 of 20.



* Tilt #9 b3(E) bars as required to maintain clearance.

*** Cost included with Concrete Superstructure.

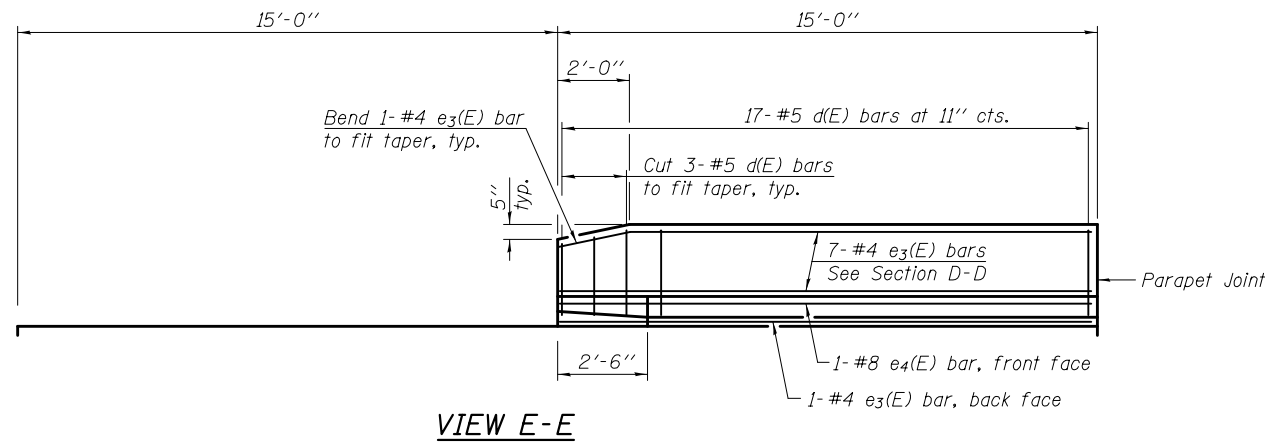


NEAR ABUTMENT

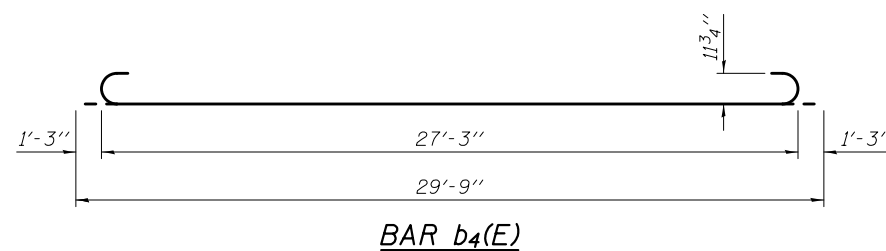
SECTION D-D

(See Plan for dimensions not shown)

AT APPROACH FOOTING



VIEW E-E



BAR b4(E)

TWO APPROACHES
 BILL OF MATERIAL

Bar	No.	Size	Length	Shape
a2(E)	48	#6	6'-6"	—
a3(E)	50	#4	33'-6"	—
a4(E)	92	#5	33'-6"	—
b3(E)	54	#4	29'-8"	—
b4(E)	162	#9	29'-9"	—
b5(E)	4	#4	14'-8"	—
d(E)	68	#5	5'-7"	U
d2(E)	68	#5	7'-11"	U
e3(E)	32	#4	14'-8"	—
e4(E)	4	#8	14'-8"	—
t(E)	140	#4	9'-8"	—
w(E)	80	#5	33'-6"	—
Concrete Structures		Cu. Yd.	41.6	
Concrete Superstructure		Cu. Yd.	110.2	
Bridge Deck Grooving		Sq. Yd.	214	
Protective Coat		Sq. Yd.	246	
Reinforcement Bars, Epoxy Coated		Pound	27,430	

(Sheet 2 of 2)

6/19/2013 5:32:10 PM 0810196_64D18_013_APPR02.dgn



DESIGNED - MWS	REVISED -
CHECKED - TAY	REVISED -
DRAWN - MWS	REVISED -
CHECKED - BJM	REVISED -

STATE OF ILLINOIS
 DEPARTMENT OF TRANSPORTATION

BRIDGE APPROACH SLAB DETAILS
 STRUCTURE NO. 081-0196

SHEET NO. 13 OF 20 SHEETS

F.A.P.	SECTION	COUNTY	TOTAL SHEETS	SHEET NO.
599	103MFT-BR	ROCK ISLAND	88	44
CONTRACT NO. 64D18				
ILLINOIS FED. AID PROJECT				