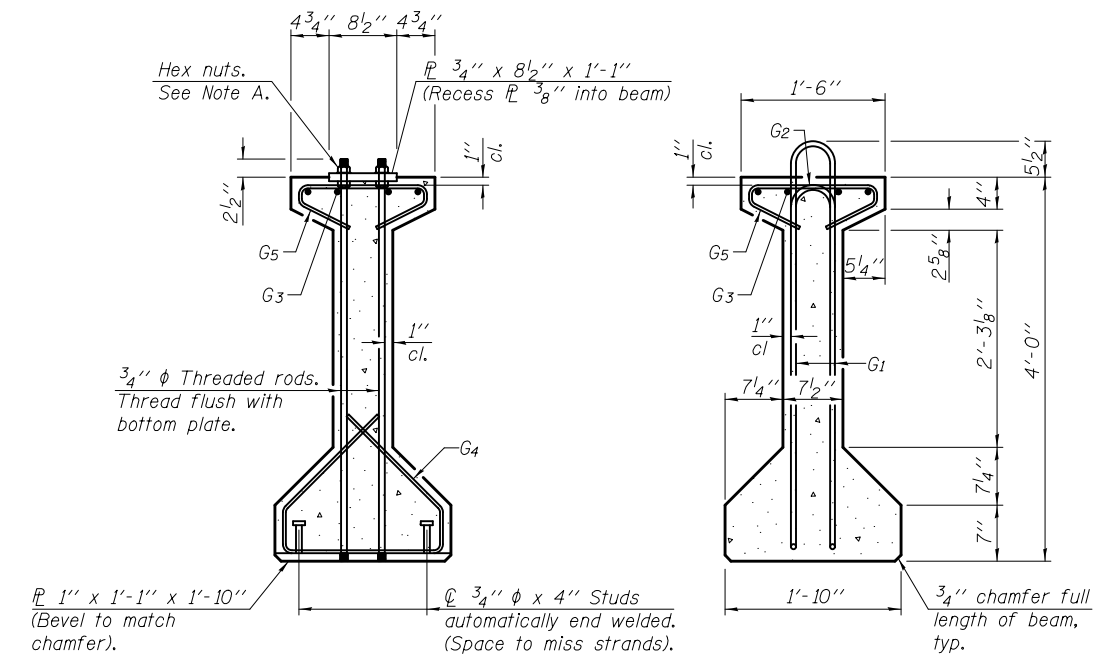


ELEVATION OF BEAM
(Showing reinforcement & dimensions)

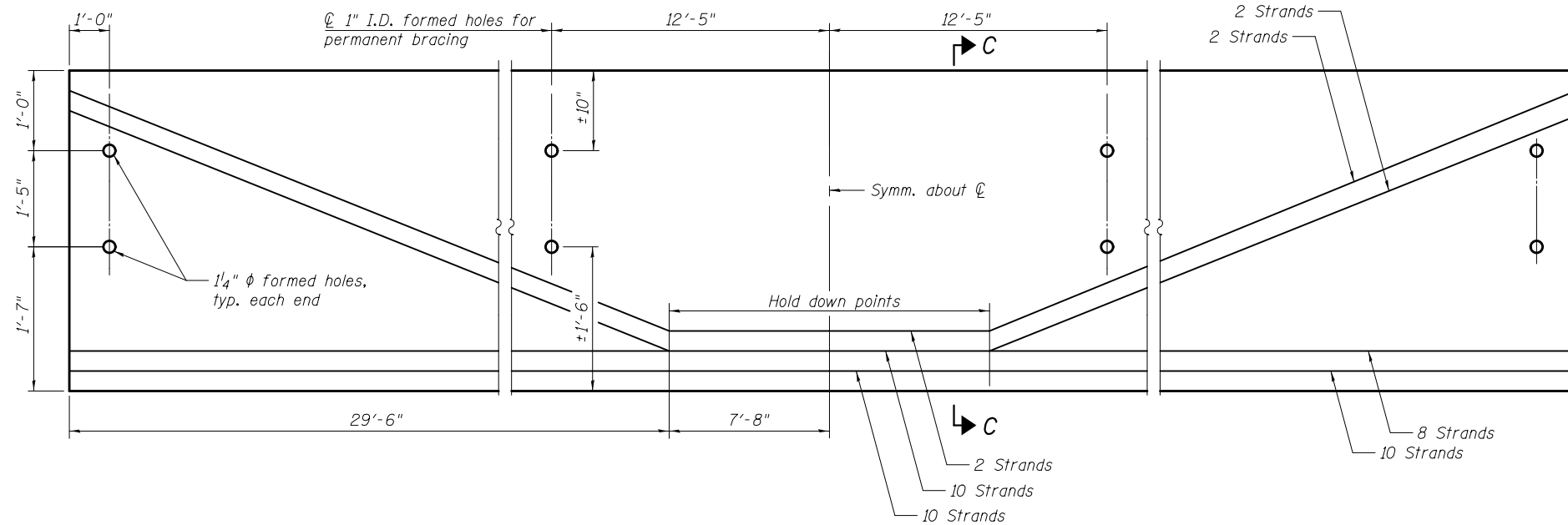
* 3 spaces at 3" = 9".
** 4-3/4" φ threaded dowel rods at 3" cts., Each Face.

Note A:
Hex nuts (top and bottom) with lock washers (top). Only tighten sufficiently to compress lock washers.

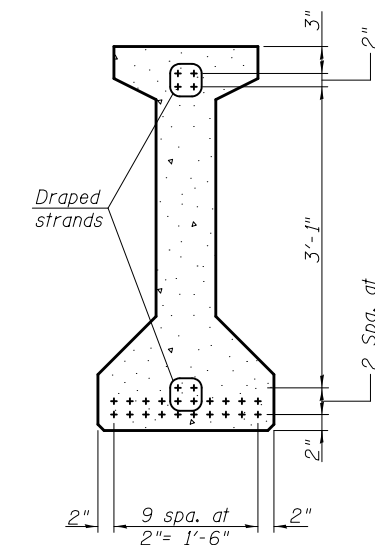


SECTION A-A

SECTION B-B



ELEVATION OF BEAM
(Showing prestressing steel)



SECTION C-C

*****BAR LIST
ONE BEAM ONLY**

Bar	No.	Size	Length	Shape
G ₁	117	#4	9'-8"	⊓
G ₂	12	#4	7'-11"	⊓
G ₃	8	#7	39'-0"	⊓
G ₄	38	#3	5'-3"	⊓
G ₅	74	#3	2'-9"	⊓

***For information only

Notes:
See sheet 16 of 20 for additional details and Bill of Material.
Required release strength, f'ci, shall be 5000 psi.

6/19/2013 5:32:11 PM 0810196_64D18_015_BMD01.dgn

Wight

DESIGNED -	BJM	REVISED -	
CHECKED -	MAS	REVISED -	
DRAWN -	MWS	REVISED -	
CHECKED -	BJM	REVISED -	

**STATE OF ILLINOIS
DEPARTMENT OF TRANSPORTATION**

**48" PPC I-BEAM
STRUCTURE NO. 081-0196**

SHEET NO. 15 OF 20 SHEETS

F.A.P.	SECTION	COUNTY	TOTAL SHEETS	SHEET NO.
599	103MFT-BR	ROCK ISLAND	88	46
CONTRACT NO. 64D18				
ILLINOIS FED. AID PROJECT				