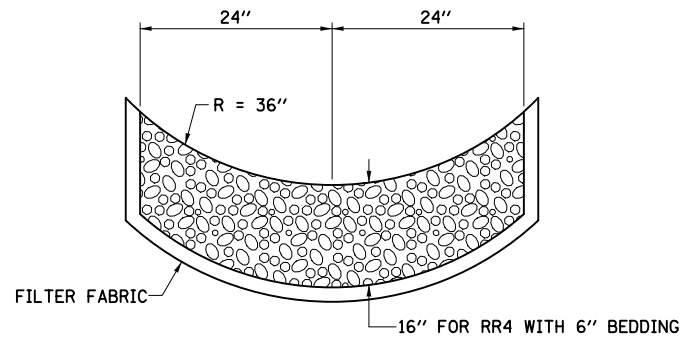


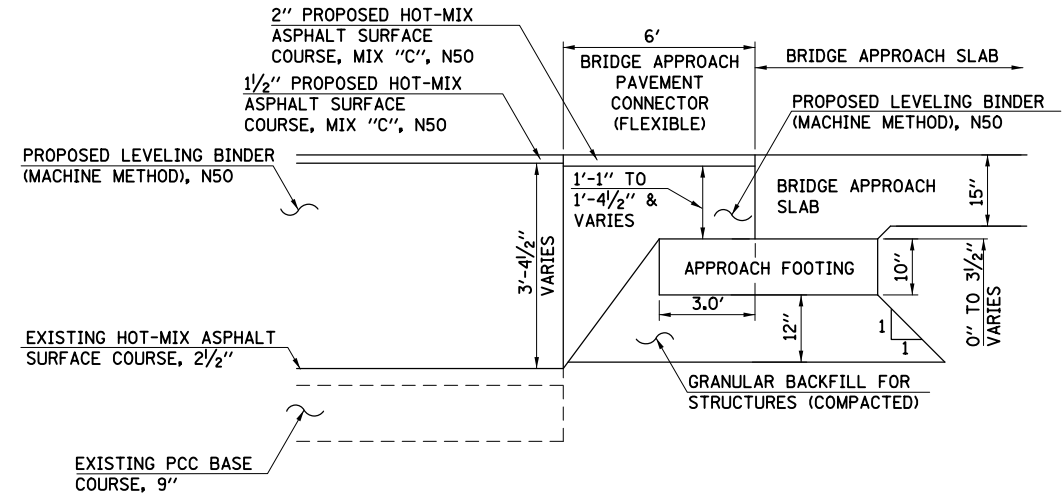
PLAN	SURVEYED	DATE
	PLOTTED	
	CHECKED	
	BY	
	NO.	

PROFILE	SURVEYED	DATE
	PLOTTED	
	CHECKED	
	BY	
	NO.	



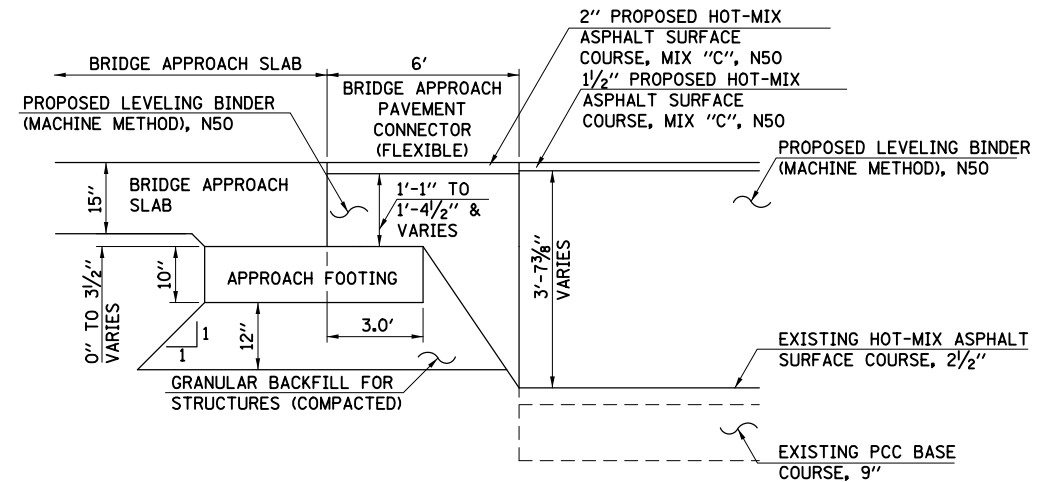
THIS WORK SHALL BE DONE IN ACCORDANCE WITH SECTION 281. STONE LINED DITCH WILL BE MEASURED FOR PAYMENT IN PLACE AND THE AREA COMPUTED IN SQUARE YARDS OF ACTUAL SURFACE AREA. STONE LINED DITCH WILL BE PAID FOR AT THE CONTRACT UNIT PRICE PER SQUARE YARD FOR STONE RIPRAP CLASS A4. THE FILTER FABRIC SHALL BE ACCORDING TO SECTION 282. FILTER FABRIC WILL BE PAID FOR AT THE CONTRACT UNIT PRICE PER SQUARE YARD FOR FILTER FABRIC.

STONE LINED DITCH



SOUTH BRIDGE APPROACH PAVEMENT CONNECTOR (FLEXIBLE)

STA. 733+32.5 TO STA. 733+38.5



NORTH BRIDGE APPROACH PAVEMENT CONNECTOR (FLEXIBLE)

STA. 734+73.5 TO STA. 734+79.5

FILE NAME = D206907.sht.det_01.dgn



USER NAME = mszmurlo	DESIGNED KAC	REVISED
	DRAWN KMB	REVISED
PLOT SCALE = 10.0000' / 1"	CHECKED KAC	REVISED
PLOT DATE = 6/19/2013	DATE 05-03-2013	REVISED

STATE OF ILLINOIS
DEPARTMENT OF TRANSPORTATION

IL 92 OVER BIG BRANCH CREEK
CONSTRUCTION DETAILS

SCALE: SHEET NO. OF SHEETS STA. TO STA.

F.A.P. RTE.	SECTION	COUNTY	TOTAL SHEETS	SHEET NO.
599	103MFT-BR	ROCK ISLAND	88	53
CONTRACT NO. 64D18				
FED. ROAD DIST. NO. ILLINOIS FED. AID PROJECT				