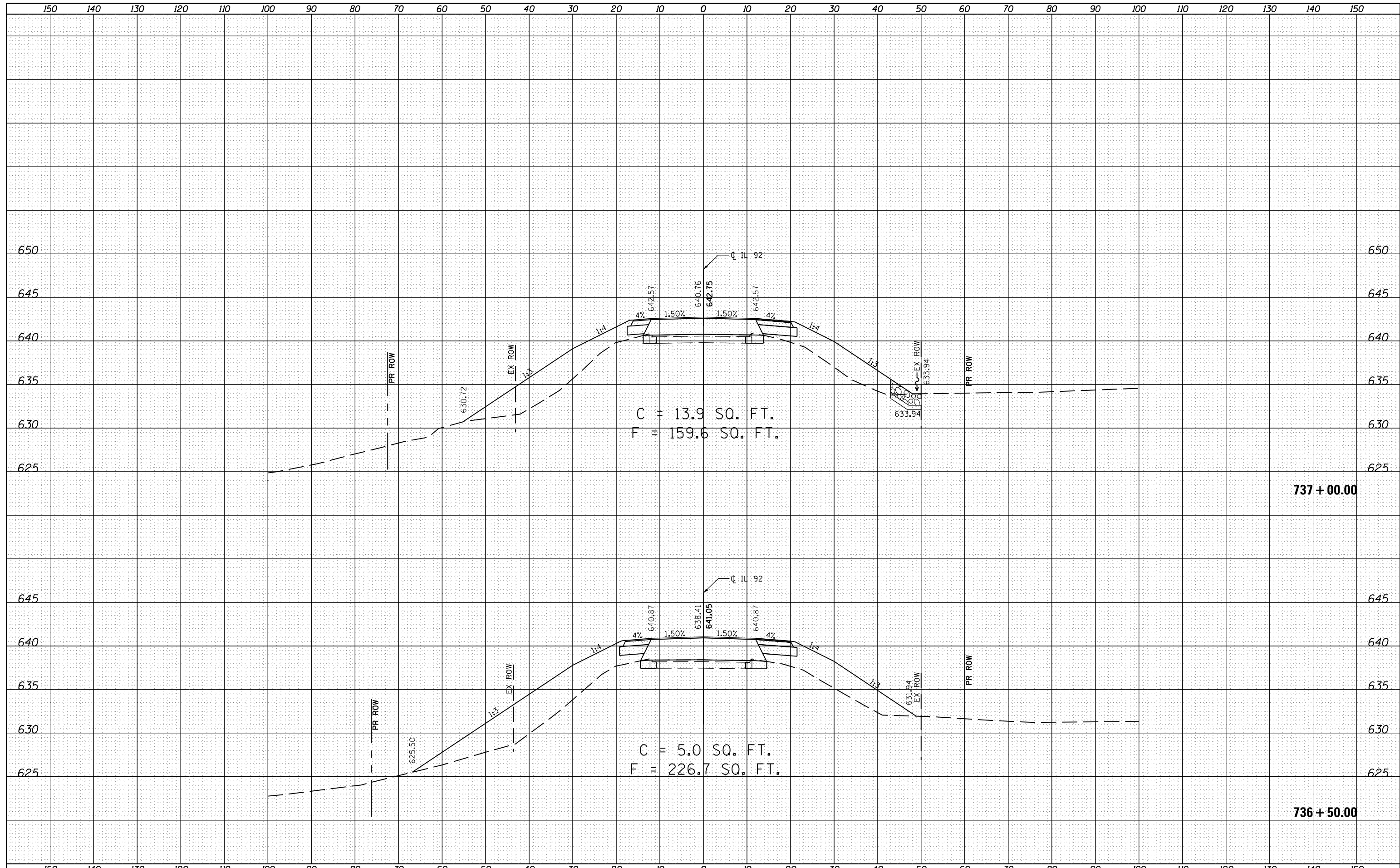


DATE	
BY	
FINAL SURVEY	SURVEYED
NOTE BOOK	PLOTTED
NO.	TEMPLATE
	AREAS CHECKED

DATE	
BY	
ORIGINAL SURVEY	SURVEYED
NOTE BOOK	PLOTTED
NO.	TEMPLATE
	AREAS CHECKED



FILE NAME = E:\0719-1\Phase II_IL 92\Plan Sheets\0205807-sh1-sc.dgn	USER NAME = Fred 576	DESIGNED - GRE	REVISSED -	STATE OF ILLINOIS DEPARTMENT OF TRANSPORTATION	IL 92 OVER BIG BRANCH CREEK CROSS SECTIONS	F.A.P. RTE. 599	SECTION 103MFT-BR	COUNTY ROCK ISLAND	TOTAL SHEETS 88	SHEET NO. 74	
Default	PLOT SCALE = 20.0000' / in.	CHECKED - ST	REVISSED -			SCALE: 1"=10', 1"=5'	SHEET 11	OF 14 SHEETS	STA. 736+50.00	TO STA. 737+00.00	CONTRACT NO. 64D18
	PLOT DATE = 6/19/2013	DATE - 04/2013	REVISSED -			ILLINOIS FED. AID PROJECT					