

CONSULTANT: BRIAN MALONE (630-969-7000)

PROJECT ENGINEER: REBECCA MARRUFFO

DISTRICT 2 BUREAU OF DESIGN
SQUAD LEADER: CHAD SPREEMAN (815-284-5934)
SENIOR SQUAD LEADER: MATT FARMER (815-284-5924)

FOR INDEX OF SHEETS, SEE SHEET NO. 2

FOR LIST OF HIGHWAY STANDARDS, SEE SHEET NO. 2

FOR LIST OF DISTRICT 2 STANDARDS, SEE SHEET NO. 2

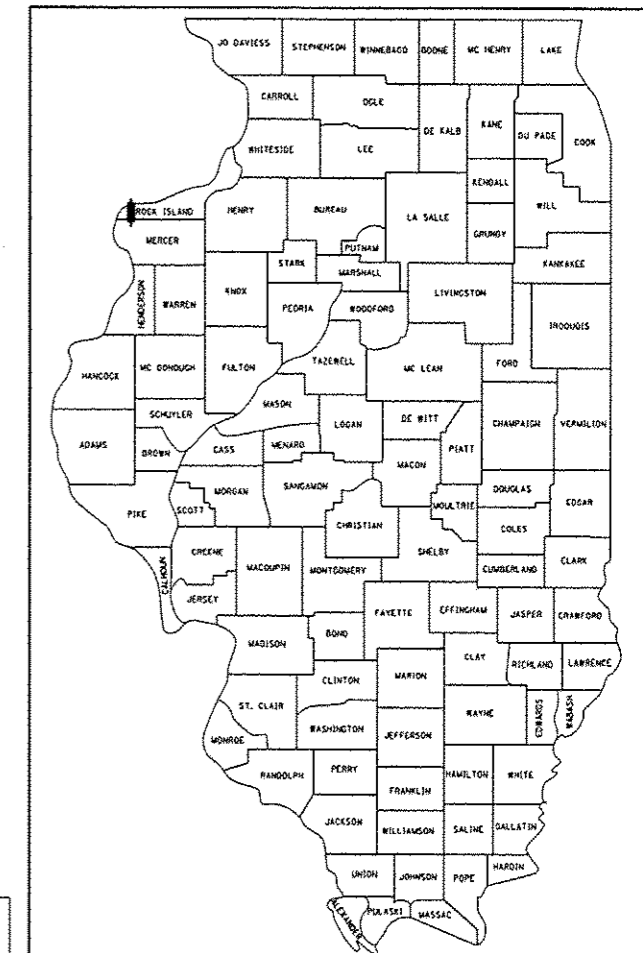
STATE OF ILLINOIS
DEPARTMENT OF TRANSPORTATION
DIVISION OF HIGHWAYS
**PROPOSED
HIGHWAY PLANS**
F.A.P. ROUTE 599 (IL 92)

BRIDGE REPLACEMENT OF EXISTING OVER
BIG BRANCH CREEK
SECTION 103MFT-BR
PROJECT: ACF-0599 (027)
ROCK ISLAND COUNTY
C-92-065-12

F.A.P. RTE.	SECTION	COUNTY	TOTAL SHEETS	SHEET NO.
599	103MFT-BR	ROCK ISLAND	88	1

* 88 + 2 = 90

D-92-058-07

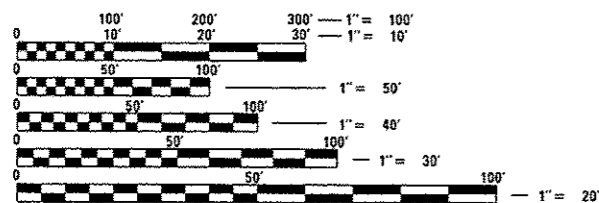


LOCATION OF SECTION INDICATED THUS: —

<p>ROBERT TESSITORE 62-41333 REGISTERED PROFESSIONAL ENGINEER OF ILLINOIS EXPIRES: 11-30-2013 WIGHT & COMPANY ROADWAY SHEETS 1-23, 31, 52-53</p>	<p>BRIAN J. MALONE 081-006002 REGISTERED PROFESSIONAL ENGINEER OF ILLINOIS EXPIRES: 11-30-2014 WIGHT & COMPANY STRUCTURE SHEETS 32-51</p>	<p>FRED M. LIN 062-096704 REGISTERED PROFESSIONAL ENGINEER OF ILLINOIS EXPIRES: 11-30-2013 LIN ENGINEERING ROADWAY SHEETS 24-28, 64-88</p>
--	---	--

Wight
Wight & Company
2500 North Frontage Road, Darien, IL 60561
630.969.7000 630.969.7979 fax
Design Firm Registration 184-000451

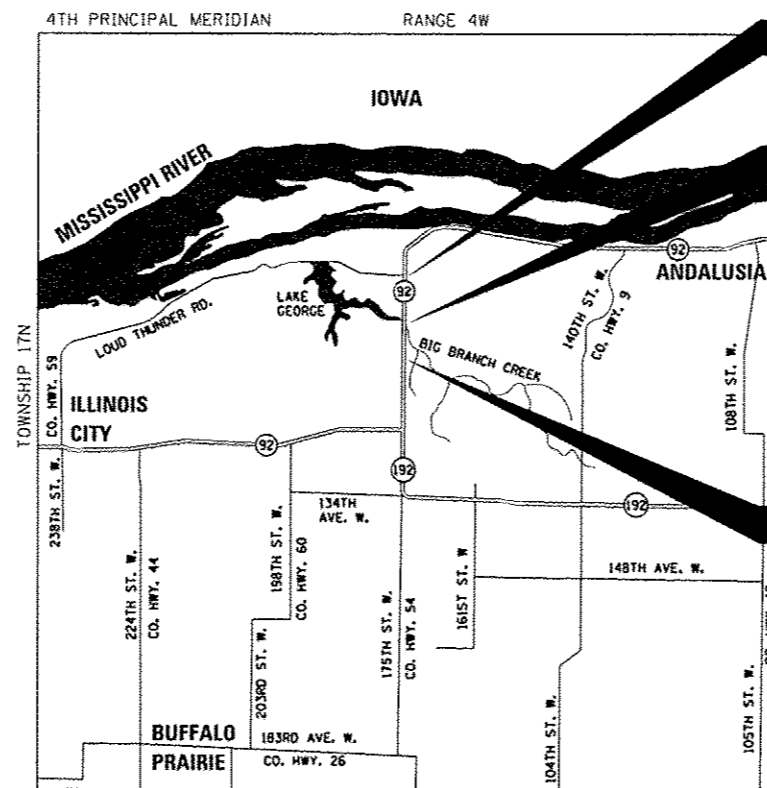
Lin Engineering, Ltd.
Consulting Engineers
Chatham, Illinois Westmont, Illinois



FULL SIZE PLANS HAVE BEEN PREPARED USING STANDARD ENGINEERING SCALES. REDUCED SIZED PLANS WILL NOT CONFORM TO STANDARD SCALES. IN MAKING MEASUREMENTS ON REDUCED PLANS, THE ABOVE SCALES MAY BE USED.

J.U.L.I.E.
JOINT UTILITY LOCATION INFORMATION FOR EXCAVATION
1-800-892-0123
OR 811

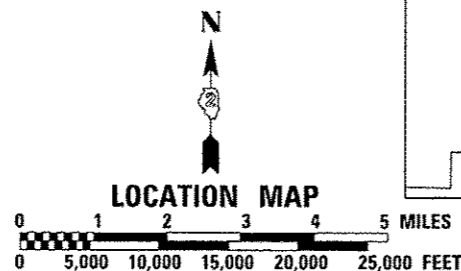
ROCK ISLAND COUNTY
BUFFALO PRAIRIE TOWNSHIP
TOWNSHIP 17N, RANGE 4W
SECTION 35, SW 1/4



PROJECT ENDS
STA. 740 + 00.0

BRIDGE REPLACEMENT
EX SN: 081-0072
PR SN: 081-0196
STA. 733 + 38.5 TO 734 + 73.5
EXISTING 32' SINGLE SPAN
CONCRETE T-BEAM BRIDGE
PROPOSED 77' SINGLE SPAN PPC
I-BEAM ON H-PILE ABUTMENTS

PROJECT BEGINS
STA. 729 + 20.0



GROSS LENGTH = 1080.00 FT. = 0.205 MILE
NET LENGTH = 945.00 FT. = 0.179 MILE

PROJECT LOCATED ON ILLINOIS 92
OVER BIG BRANCH CREEK APPROXIMATELY
1.5 MILES NORTH OF THE ILLINOIS ROUTE 92 /
ILLINOIS ROUTE 192 INTERSECTION

CONTRACT NO. 64D18 FAP ROUTE 599 ROCK ISLAND COUNTY SECTION 103MFT-BR

FUNCTIONAL CLASSIFICATION
MINOR ARTERIAL (RURAL)
2030 ADT = 1125
(PV = 965, SU = 65, MU = 45)
SPEED LIMIT: 55 MPH (POSTED)

STATE OF ILLINOIS
DEPARTMENT OF TRANSPORTATION
DIVISION OF HIGHWAYS
SUBMITTED JUNE 20 2013
Paul A. Loefer
DEPUTY DIRECTOR OF HIGHWAYS, REGION ENGINEER
Aug 16 2013
John D. Baranzelli P.E.
ENGINEER OF DESIGN AND ENVIRONMENT
Aug 16 2013
Omar Osman P.E.
DIRECTOR OF HIGHWAYS, CHIEF ENGINEER

PRINTED BY THE AUTHORITY
OF THE STATE OF ILLINOIS