

Chain 172 contains:
1013 CUR 200 CUR 210 CUR 220 230

Beginning chain 172 description
=====

Point 1013 N 1,811,036.9322 E 2,400,616.4881 Sta 197+56.65

Course from 1013 to PC 200 359° 31' 46.94" Dist 7,231.0511'

Curve Data

Curve 200
P.I. Station 275+57.62 N 1,818,837.6383 E 2,400,552.4571
Delta = 0° 37' 05.25" (LT)
Degree = 0° 03' 15.23"
Tangent = 569.9178'
Length = 1,139.8246'
Radius = 105,653.7019'
External = 1.5371'
Long Chord = 1,139.8190'
Mid. Ord. = 1.5371'
P.C. Station 269+87.71 N 1,818,267.7397 E 2,400,557.1351
P.T. Station 281+27.53 N 1,819,407.4533 E 2,400,541.6314
C.C. N 1,817,400.5259 E 2,294,906.9923

Course from PT 200 to PC 210 358° 54' 41.70" Dist 2,944.2158'

Curve Data

Curve 210
P.I. Station 316+81.11 N 1,822,960.3939 E 2,400,474.1299
Delta = 0° 47' 20.54" (LT)
Degree = 0° 03' 53.08"
Tangent = 609.3659'
Length = 1,218.7125'
Radius = 88,496.2763'
External = 2.0980'
Long Chord = 1,218.7029'
Mid. Ord. = 2.0979'
P.C. Station 310+71.75 N 1,822,351.1379 E 2,400,485.7050
P.T. Station 322+90.46 N 1,823,569.4327 E 2,400,454.1659
C.C. N 1,820,670.1216 E 2,312,005.3959

Course from PT 210 to PC 220 358° 07' 21.15" Dist 1,330.9187'

Curve Data

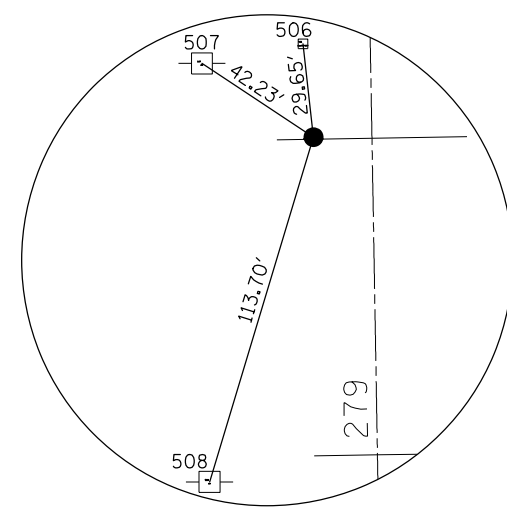
Curve 220
P.I. Station 341+47.45 N 1,825,425.4314 E 2,400,393.3271
Delta = 2° 22' 01.53" (RT)
Degree = 0° 13' 30.03"
Tangent = 526.0769'
Length = 1,052.0041'
Radius = 25,463.9072'
External = 5.4337'
Long Chord = 1,051.9293'
Mid. Ord. = 5.4326'
P.C. Station 336+21.38 N 1,824,899.6369 E 2,400,410.5624
P.T. Station 346+73.38 N 1,825,951.4891 E 2,400,397.8227
C.C. N 1,825,733.8843 E 2,425,860.8002

Course from PT 220 to 230 0° 29' 22.68" Dist 2,233.8192'

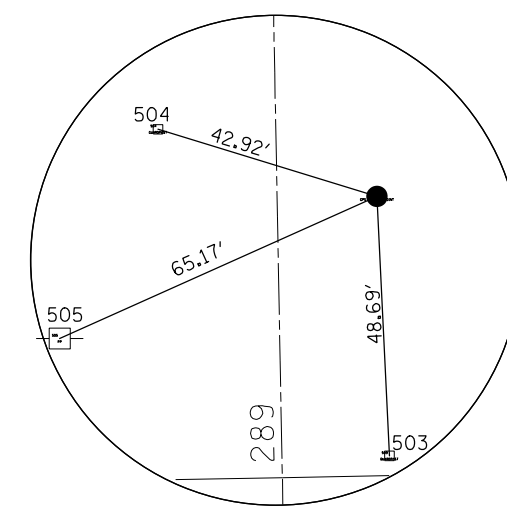
Point 230 N 1,828,185.2267 E 2,400,416.9121 Sta 369+07.20

=====

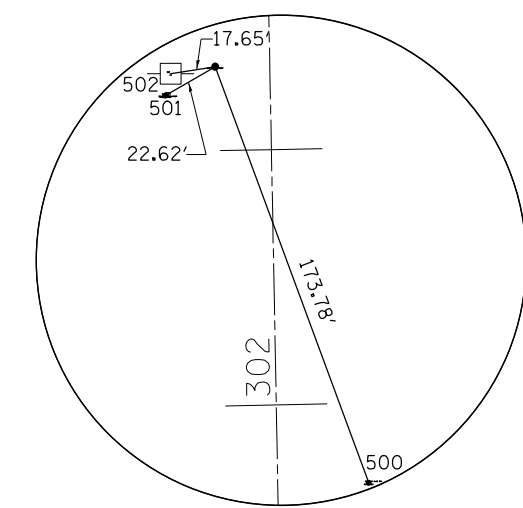
Ending chain 172 description



HORIZONTAL CONTROL POINT NO. 1



HORIZONTAL CONTROL POINT NO. 2



HORIZONTAL CONTROL POINT NO. 3

HORIZONTAL CONTROL POINTS							
POINT	NORTH	EAST	ELEVATION	CHAIN	STATION	OFFSET	DESCRIPTION
1	1819280.2880	2400525.5070	628.5340	172	280+00.67	18.4609' LT	GPS CONTROL POINT, PIN
2	1820232.4930	2400544.6910	628.0560	172	289+52.36	18.731' RT	GPS CONTROL POINT, PIN
3	1821612.0480	2400478.3480	630.3380	172	303+32.93	21.3949' LT	GPS CONTROL POINT, PIN

SURVEY WORK POINTS							
POINT	NORTH	EAST	ELEVATION	CHAIN	STATION	OFFSET	DESCRIPTION
102	1820021.6800	2400562.0010	619.7580	172	287+41.26	32.0334' RT	TRAVERSE STATION
103	1819511.8750	2400590.7090	625.4680	172	282+31.00	51.0523' RT	TRAVERSE STATION
104	1819483.9860	2400485.7350	625.4500	172	282+05.11	54.4325' LT	TRAVERSE STATION

REFERENCE TIES				
POINT	CHAIN	STATION	OFFSET	DESCRIPTION
500	172	301+68.78	35.6674' RT	FENCE POST, SHINER
501	172	303+21.94	41.1722' LT	FENCE CORNER, SHINER
502	172	303+30.52	38.8849' LT	POWER POLE, SHINER
503	172	289+03.69	20.1357' RT	GUARDPOST, SHINER
504	172	289+65.71	22.0589' LT	GUARDPOST, SHINER
505	172	289+26.85	41.2354' LT	POWER POLE, SHINER
506	172	280+30.20	21.2278' LT	GUARDPOST, SHINER
507	172	280+24.60	53.2661' LT	POWER POLE, SHINER
508	172	278+92.35	53.1444' LT	POWER POLE, SHINER

BENCH MARKS							
POINT	NORTH	EAST	ELEVATION	CHAIN	STATION	OFFSET	DESCRIPTION
401	1819466.5060	2400557.3820	633.3470	172	281+86.27	16.8695' RT	BRIDGE CURB, DISK
402	1819976.2620	2400512.7560	627.8660	172	286+96.78	18.0654' LT	HEADWALL, CHISELED SQUARE
403	1821600.9840	2400459.8490	632.5120	172	303+22.22	40.1008' LT	R.O.W. MARKER, TOP

CURVE POINT NUMBERS					
CHAIN	CURVE	PI	CC	PC	PT
172	200	200	201	202	203
172	210	210	211	212	213
172	220	220	221	222	223

APPARENT PROPERTY CORNERS							
POINT	NORTH	EAST	ELEVATION	CHAIN	STATION	OFFSET	DESCRIPTION
716	1818888.0690	2400589.4280	623.5330	172	276+07.52	39.2023' RT	R.O.W. MARKER, BACK
717	1818787.3240	2400512.7750	624.4220	172	275+07.83	38.814' LT	R.O.W. MARKER, BACK
718	1822231.9120	2400447.7680	630.9590	172	309+53.26	40.1949' LT	R.O.W. MARKER, BACK
720	1820208.8090	2395244.8790	629.3100	172	290+29.35	5280.5747' LT	SECTION CORNER
725	1820305.2610	2405728.9030	626.6620	172	289+26.64	5203.3899' RT	PIPE
726	1820275.7980	2400517.3180	629.0390	172	289+96.18	7.8145' LT	SECTION CORNER
728	1820337.6320	2405740.5020	627.3180	172	289+58.79	5215.6017' RT	SECTION CORNER