

INDEX OF SHEETS

1. General Plan & Elevation
2. General Data
3. Top of Slab Elevations 1
4. Top of Slab Elevations 2
5. South Approach Top of Slab Elevations
6. North Approach Top of Slab Elevations
7. Superstructure Plan
8. Superstructure Details
9. Integral Abutment Diaphragm Details
10. Bridge Approach Slab Details 1
11. Bridge Approach Slab Details 2
12. Framing Plan
13. Structural Steel Details
14. South Abutment
15. North Abutment
16. Metal Shell Pile Details
17. Bar Splicer Assembly and Mechanical Splicer Details
18. Boring Logs 1
19. Boring Logs 2

GENERAL NOTES

1. Fasteners shall be ASTM A325 Type 1, mechanically galvanized bolts in painted areas and ASTM A325 Type 3 in unpainted areas. Bolts $\frac{3}{4}$ in. dia., holes $\frac{15}{16}$ in. dia., unless otherwise noted.
2. Calculated weight of structural steel = 59,430 pounds.
3. All structural steel shall be AASHTO M 270 Grade 50W.
4. Reinforcement bars designated (E) shall be epoxy coated.
5. No field welding is permitted except as specified in contract documents.
6. Layout of the slope protection system may be varied to suit ground conditions in the field as directed by the Engineer.
7. Structural steel shall only be painted for a distance equal to the depth of embedment into the concrete cap plus 3 in. Painted areas shall be primed in the shop with a Department approved zinc rich primer. Field painting will not be required.
8. Slipforming of the parapets is not allowed.
9. Current Ratings on File for Existing Structure
Inventory: HS 9.9
Operating: HS 19.8
Live Load Restrictions: No

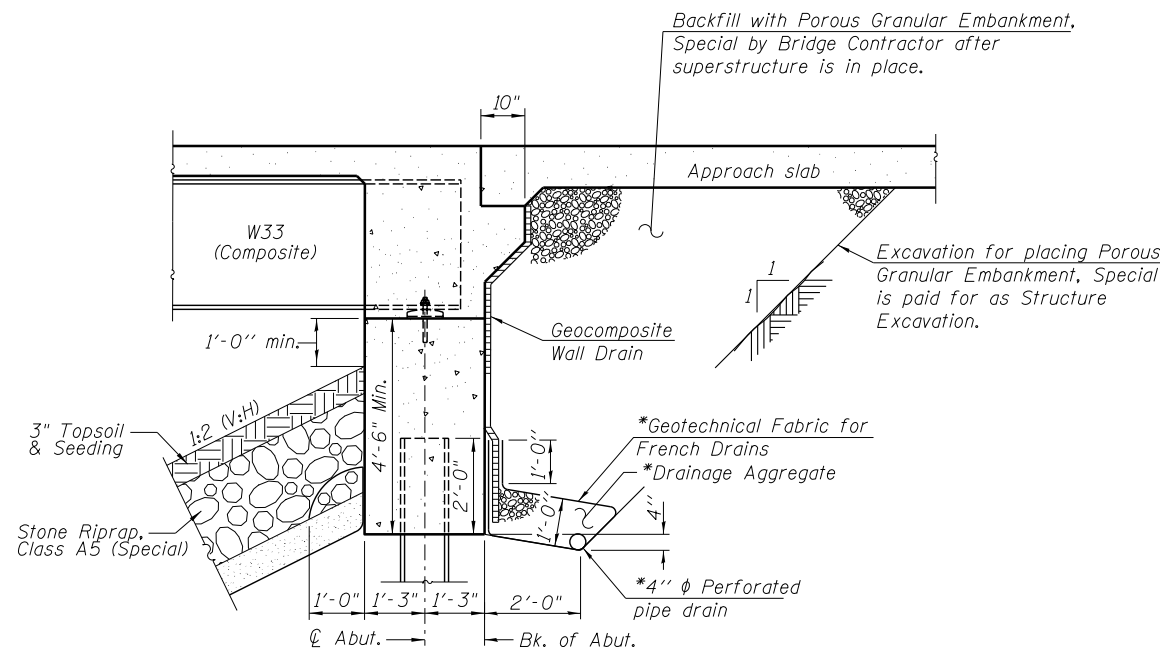
Inventory and Operating Ratings and Live Load Restrictions are provided for information only. Inventory and Operating Ratings are based on HS loading and configuration. Live Load Restrictions are based on Illinois legal loads and configurations. The Ratings and Live Load Restrictions are not necessarily representative of capacities to support the Contractor's equipment.
10. The Contractor is advised that the existing PPC Deck Beams are in a deteriorated condition with reduced load carrying capacity. It is the Contractor's responsibility to account for the condition of the beams when developing construction procedures for removal and replacement of the superstructure.

TOTAL BILL OF MATERIAL

| ITEM | UNIT | SUPER | SUB | TOTAL |
|--|---------|--------|--------|--------|
| Filter Fabric | Sq. Yd. | - | 744 | 744 |
| Stone Riprap, Class A5 (Special) | Sq. Yd. | - | 744 | 744 |
| Removal of Existing Structures | Each | - | 1 | 1 |
| Structure Excavation | Cu. Yd. | - | 268 | 268 |
| Concrete Structures | Cu. Yd. | - | 61.1 | 61.1 |
| Concrete Superstructure | Cu. Yd. | 210.2 | - | 210.2 |
| Bridge Deck Grooving | Sq. Yd. | 436 | - | 436 |
| Protective Coat | Sq. Yd. | 557 | - | 557 |
| Furnishing and Erecting Structural Steel | L. Sum | 1 | - | 1 |
| Stud Shear Connectors | Each | 990 | - | 990 |
| Reinforcement Bars, Epoxy Coated | Pound | 45,290 | 11,940 | 57,230 |
| Furnishing Metal Shell Piles 14"x0.250" | Foot | - | 649 | 649 |
| Driving Piles | Foot | - | 649 | 649 |
| Test Pile Metal Shells | Each | - | 1 | 1 |
| Name Plates | Each | 1 | - | 1 |
| Anchor Bolts, 1" | Each | 24 | - | 24 |
| Geocomposite Wall Drain | Sq. Yd. | - | 74 | 74 |
| Porous Granular Embankment, Special | Cu. Yd. | - | 156 | 156 |
| Pipe Underdrains for Structures 4" | Foot | - | 128 | 128 |
| Asbestos Bearing Pad Removal | Each | - | 26 | 26 |
| Bar Splicers | Each | 76 | - | 76 |

STATION 287+22.50
BUILT 20__ BY
STATE OF ILLINOIS
F.A.S. RTE. 200 SEC. 141B-2
LOADING HL-93
STRUCTURE NO. 098-0119

NAME PLATE
See Std. 515001



*Included in the cost of Pipe Underdrains for Structures.

Note:
All drainage system components shall extend to 2'-0" from the end of each wingwall except an outlet pipe shall extend until intersecting with the side slopes. The pipes shall drain into concrete headwalls. (See Article 601.05 of the Standard Specifications and Highway Standard 601101).

DESIGN SCOUR ELEVATION TABLE

| S. Abut. | N. Abut. |
|----------|----------|
| 624.0 | 624.3 |

WATERWAY INFORMATION

Drainage Area = 42.7 sq. mi. Exist. Low Grade Elev. = 629.50 @ Sta. 285+50
Prop. Low Grade Elev. = 630.25 @ Sta. 284+00

| Flood | Freq. Yr. | Q C.F.S. | Opening Sq. Ft. | | Nat. H.W.E. | Head - Ft. | | Headwater El. | |
|------------|-----------|----------|-----------------|-------|-------------|------------|-------|---------------|-------|
| | | | Exist. | Prop. | | Exist. | Prop. | Exist. | Prop. |
| | 10 | 1190 | 263 | 264 | 623.9 | 0.5 | 0.0 | 624.4 | 623.9 |
| Design | 50 | 1670 | 325 | 344 | 625.3 | 0.2 | 0.1 | 625.5 | 625.4 |
| Base | 100 | 1860 | 349 | 376 | 625.9 | 0.2 | 0.1 | 626.1 | 626.0 |
| Max. Calc. | 500 | 2280 | 375 | 413 | 626.5 | 0.9 | 0.6 | 627.3 | 627.1 |

10-Year Velocity through Existing Bridge = 4.5 fps
10-Year Velocity through Proposed Bridge = 4.5 fps

FILE NAME = ...E4DB1-SN0980119-002-GenData.dgn



Zroka Engineering, P.C.
4216 North Hermitage
Chicago, IL 60613

| | | |
|---------------------------------|----------------|-----------|
| USER NAME = SAW | DESIGNED - PMM | REVISED - |
| | CHECKED - DAZ | REVISED - |
| PLOT SCALE = 0:2.0000 '1' / in. | DRAWN - SAW | REVISED - |
| PLOT DATE = 6/12/2013 | CHECKED - LAS | REVISED - |

STATE OF ILLINOIS
DEPARTMENT OF TRANSPORTATION

GENERAL DATA
S.N. 098-0119

SHEET NO. 2 OF 19 SHEETS

| F.A.S. RTE. | SECTION | COUNTY | TOTAL SHEETS | SHEET NO. |
|---------------------------|---------|-----------|--------------|-----------|
| 200 | 141B-2 | WHITESIDE | 77 | 27 |
| CONTRACT NO. 64DB1 | | | | |
| ILLINOIS FED. AID PROJECT | | | | |