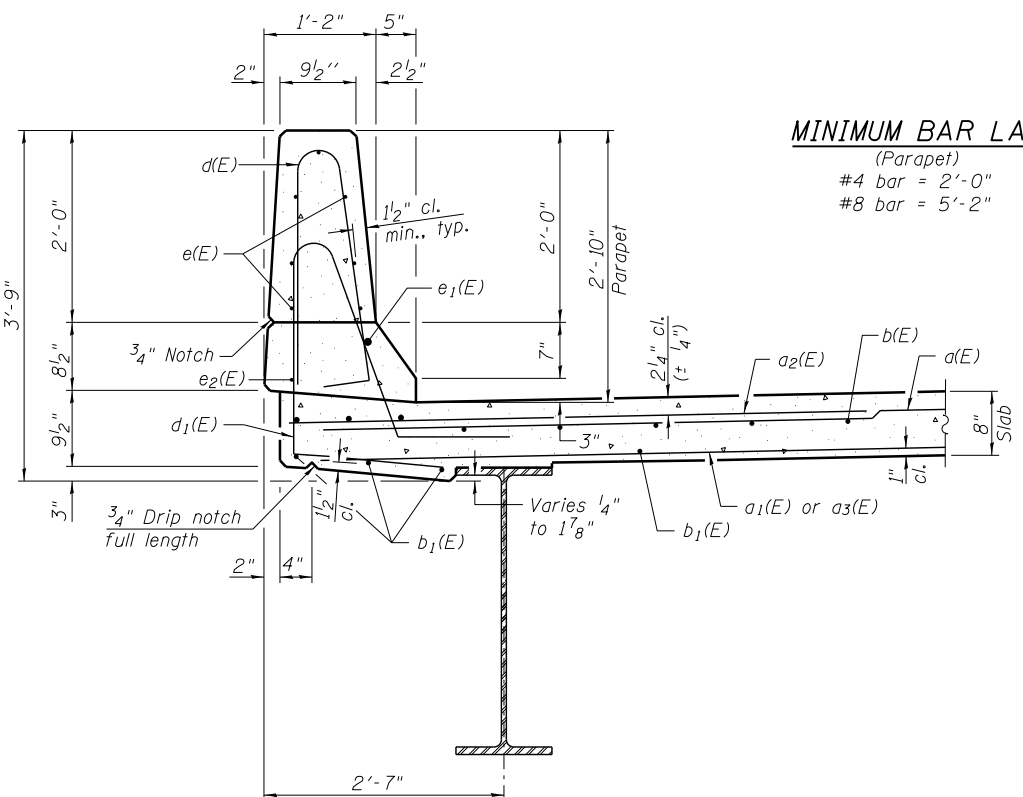


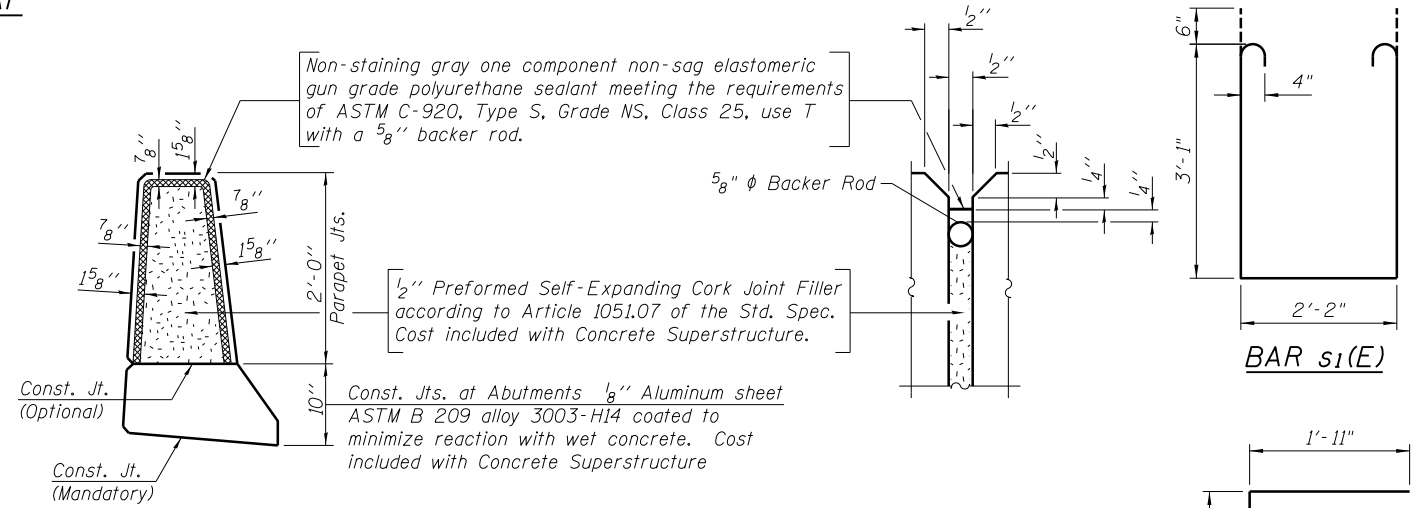
**INSIDE ELEVATION OF PARAPET**



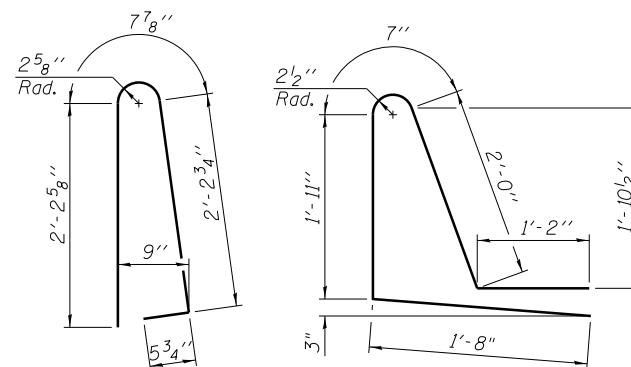
**SECTION THRU PARAPET**

**MINIMUM BAR LAP**

(Parapet)  
 #4 bar = 2'-0"  
 #8 bar = 5'-2"

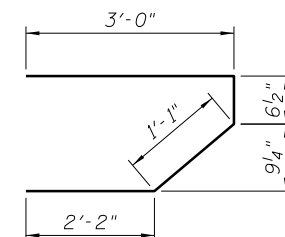


**PARAPET JOINT DETAILS**

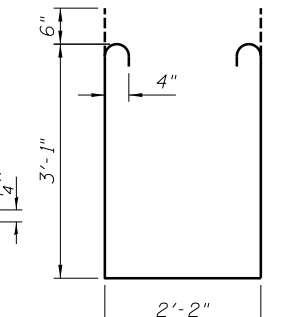


**BAR d(E)**

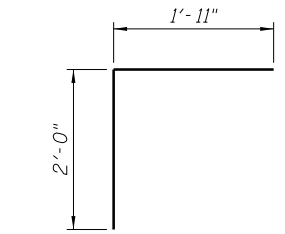
**BAR d1(E)**



**BAR s(E)**



**BAR s1(E)**



**BAR v(E)**

**SUPERSTRUCTURE BILL OF MATERIAL**

Bar	No.	Size	Length	Shape
d(E)	242	#5	19'-3"	—
a1(E)	85	#5	20'-7"	—
a2(E)	240	#6	6'-6"	—
a3(E)	85	#5	17'-10"	—
b(E)	152	#5	19'-11"	—
b1(E)	93	#5	25'-6"	—
d(E)	154	#5	5'-7"	⌋
d1(E)	154	#5	7'-4"	⌋
e(E)	56	#4	17'-2"	—
e1(E)	6	#8	26'-10"	—
e2(E)	6	#4	24'-8"	—
m(E)	20	#6	19'-3"	—
m1(E)	24	#6	8'-6"	—
m2(E)	10	#6	5'-8"	—
m3(E)	4	#6	2'-3"	—
s(E)	72	#5	6'-10"	⌋
s1(E)	62	#4	9'-4"	⌋
v(E)	72	#5	3'-11"	⌋
Reinforcement Bars, Epoxy Coated			Pound	21,660
Concrete Superstructure			Cu. Yds.	104.2

Bars indicated thus: 1x3-#8 etc. indicates 1 line of bars with 3 lengths per line.

FILE NAME = ...E4D81-SN0920119-008-SupDet.dgn



Zroka Engineering, P.C.  
 4216 North Hermitage  
 Chicago, IL 60613

USER NAME = SAW  
 PLOT SCALE = 0:2.0000 '1' / in.  
 PLOT DATE = 5/2/2013

DESIGNED - PMM  
 CHECKED - DAZ  
 DRAWN - SAW  
 CHECKED - LAS

REVISED -  
 REVISED -  
 REVISED -  
 REVISED -

STATE OF ILLINOIS  
 DEPARTMENT OF TRANSPORTATION

SUPERSTRUCTURE DETAILS  
 S.N. 098-0119

SHEET NO. 8 OF 19 SHEETS

F.A.S. R.T.E.	SECTION	COUNTY	TOTAL SHEETS	SHEET NO.
200	141B-2	WHITESIDE	77	33
CONTRACT NO. 64D81				

ILLINOIS FED. AID PROJECT