

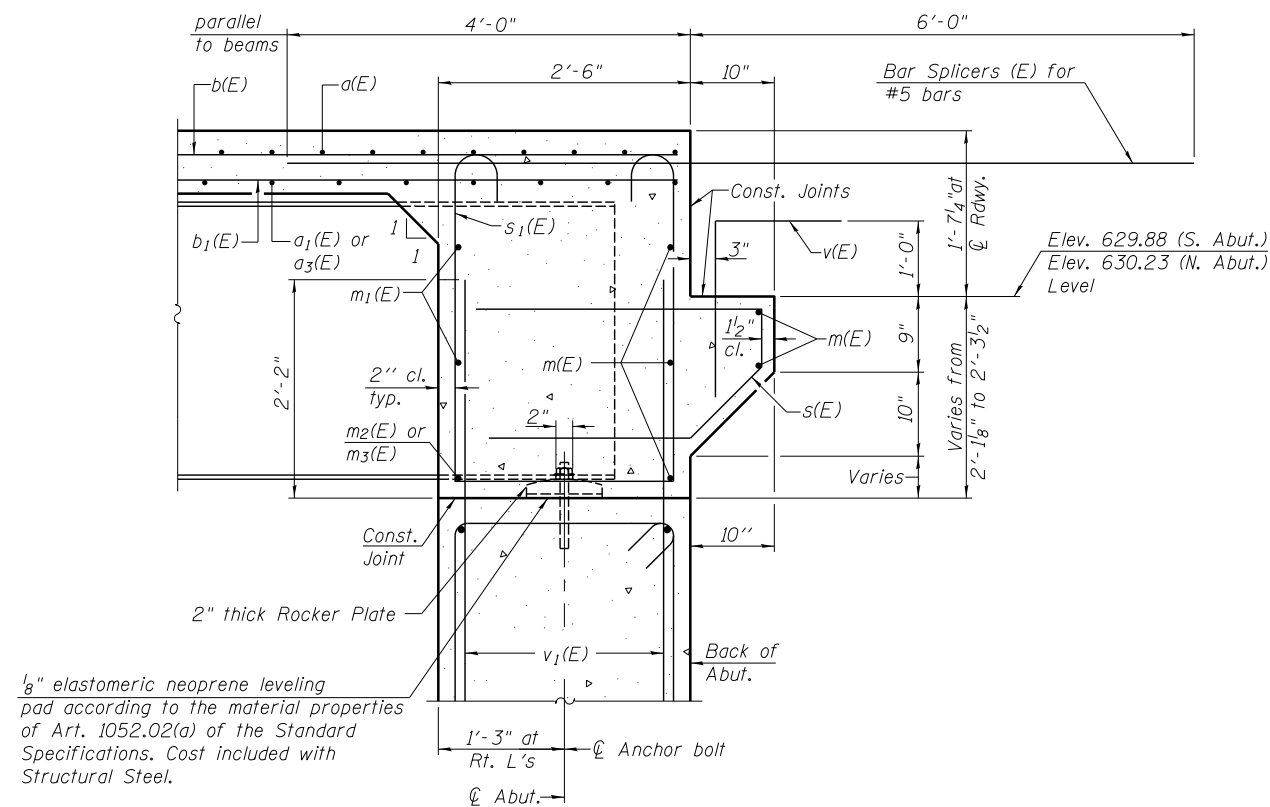
DIAPHRAGM ELEVATION AT ABUTMENT

Notes:

Reinforcement bars in diaphragm are billed with superstructure on sheet 8 of 19.
 Concrete in diaphragm is included with Concrete Superstructure on sheet 8 of 19.
 For details of bars s(E) & s1(E) see sheet 8 of 19.
 The s(E) and s1(E) bars shall be placed parallel to the beams. Spacing for these bars shall be at right angles to the beams.

MIN. BAR LAP

#6 bar = 3'-4"



SECTION A-A

Dimensions at right angles to abutment, except as shown.

FILE NAME = ...E4D81-SN09B2019-009-Diaphragm.dgn



Zroka Engineering, P.C.
 4216 North Hermitage
 Chicago, IL 60613

| | | |
|---------------------------------|----------------|-----------|
| USER NAME = SAW | DESIGNED - PMM | REVISED - |
| | CHECKED - DAZ | REVISED - |
| PLOT SCALE = 0:2.0000 '1' / in. | DRAWN - SAW | REVISED - |
| PLOT DATE = 5/2/2013 | CHECKED - LAS | REVISED - |

STATE OF ILLINOIS
 DEPARTMENT OF TRANSPORTATION

INTEGRAL ABUTMENT DIAPHRAGM DETAILS
 S.N. 098-0119

SHEET NO. 9 OF 19 SHEETS

| F.A.S. RTE. | SECTION | COUNTY | TOTAL SHEETS | SHEET NO. |
|--------------------|---------|-----------|--------------|-----------|
| 200 | 141B-2 | WHITESIDE | 77 | 34 |
| CONTRACT NO. 64D81 | | | | |

ILLINOIS FED. AID PROJECT