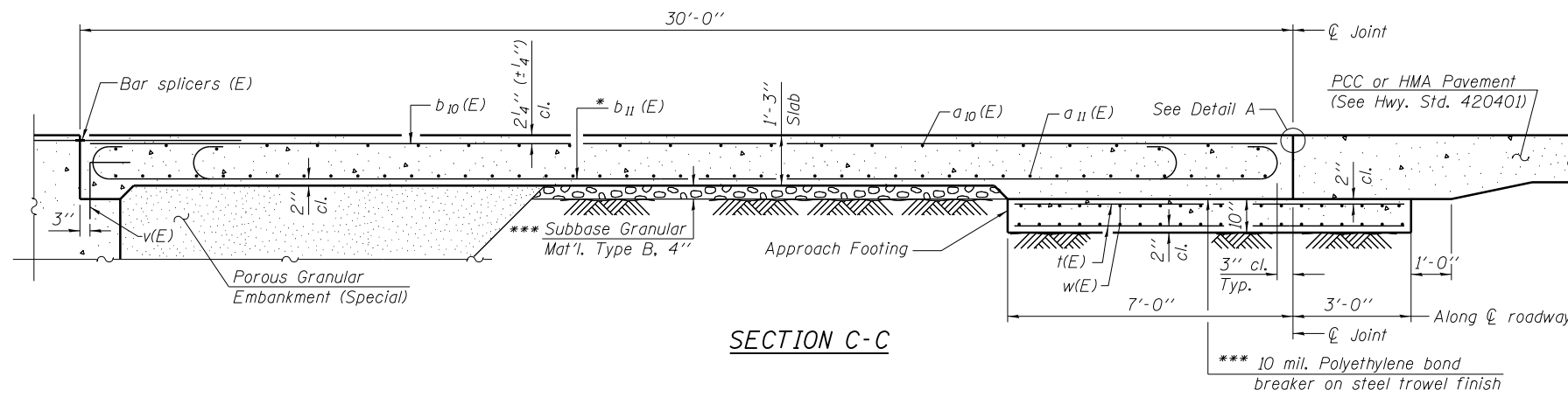
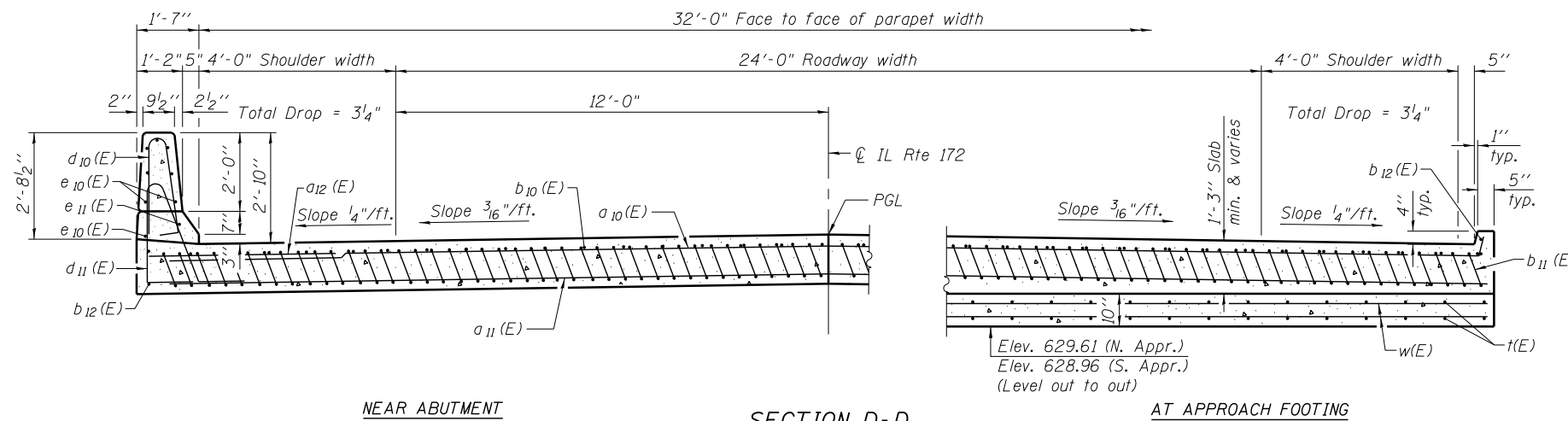


Notes:

See sheet 10 of 19 for Detail A and View B-B.
 Approach slab and parapet concrete shall be paid for as Concrete Superstructure.
 Approach footing concrete shall be paid for as Concrete Structures.
 Reinforcement shall be paid for as Reinforcement Bars, Epoxy Coated.
 For v(E) bar details, see sheet 8 of 19.
 The approach footing maximum applied service bearing pressure (Qmax) = 2.0 ksf.
 Cost of excavation for approach footing included with Concrete Structures.
 For Porous Granular Embankment (Special) and drainage treatment details, see sheet 2 of 19.
 For additional parapet details, see sheet 8 of 19.



SECTION C-C

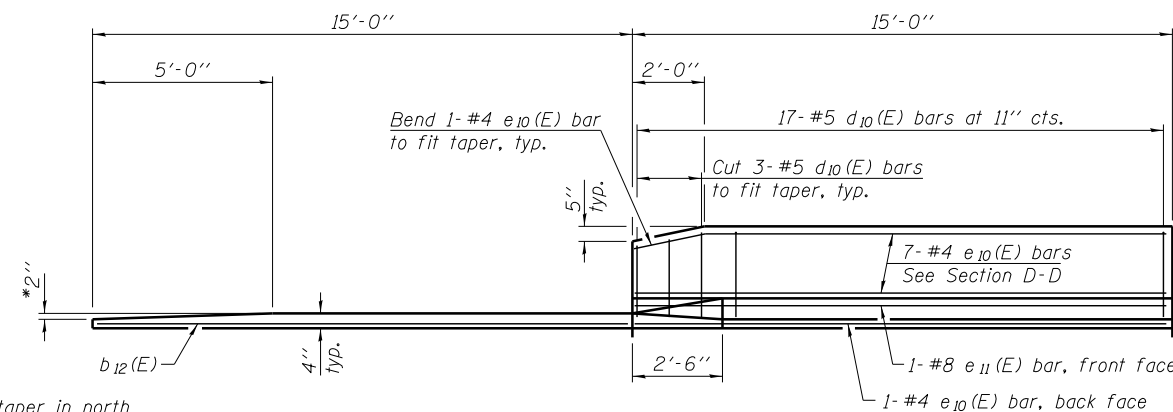


NEAR ABUTMENT

SECTION D-D

AT APPROACH FOOTING

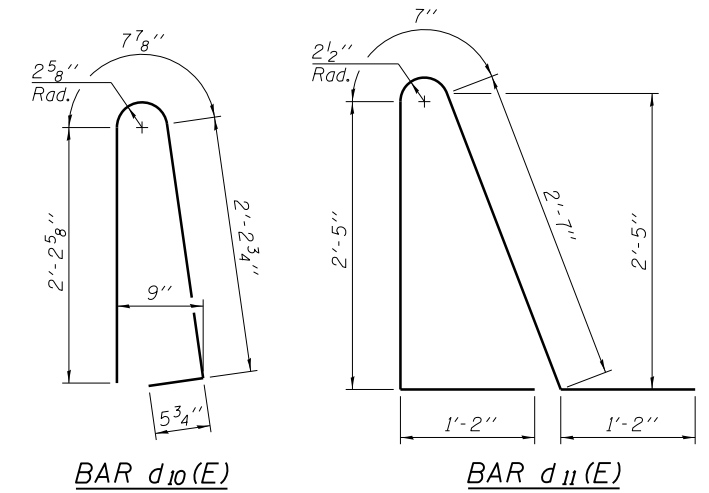
(See Plan for dimensions not shown)



VIEW E-E

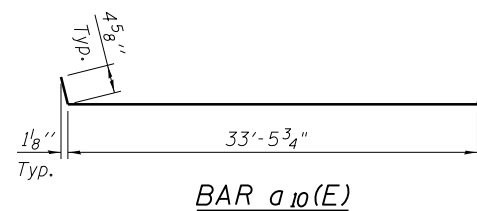
* Tilt #9 b11(E) bars as required to maintain clearance.

*** Cost included with Concrete Superstructure.

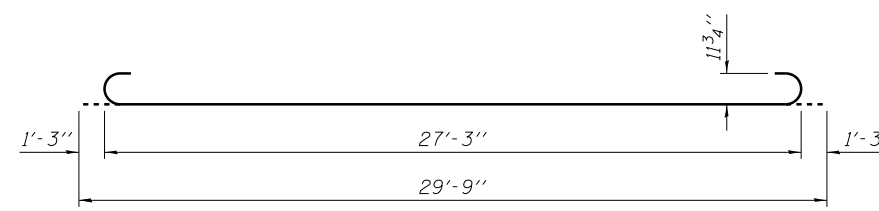


TWO APPROACHES
BILL OF MATERIAL

Bar	No.	Size	Length	Shape
a10(E)	50	#4	34'-3"	—
a11(E)	92	#5	33'-6"	—
a12(E)	48	#6	6'-6"	—
b10(E)	56	#4	29'-8"	—
b11(E)	160	#9	29'-9"	—
b12(E)	8	#4	14'-8"	—
d10(E)	68	#5	5'-7"	U
d11(E)	68	#5	7'-11"	U
e10(E)	32	#4	14'-8"	—
e11(E)	4	#8	14'-8"	—
t(E)	140	#4	9'-8"	—
w(E)	80	#5	33'-6"	—
Concrete Superstructure		Cu. Yd.	106.0	
Concrete Structures		Cu. Yd.	20.9	
Reinforcement Bars, Epoxy Coated		Pound	27,330	



BAR a10(E)



BAR b11(E)

FILE NAME = ...E4081-SN0920119-011-Appr-Slab2.dgn



USER NAME = SAW
 PLOT SCALE = 0:2.0000 '1" / in.
 PLOT DATE = 6/17/2013

DESIGNED - PMM
 CHECKED - DAZ
 DRAWN - SAW
 CHECKED - LAS

REVISED -
 REVISED -
 REVISED -
 REVISED -

STATE OF ILLINOIS
 DEPARTMENT OF TRANSPORTATION

BRIDGE APPROACH SLAB DETAILS 2
 S.N. 098-0119

SHEET NO. 11 OF 19 SHEETS

F.A.S. RTE.	SECTION	COUNTY	TOTAL SHEETS	SHEET NO.
200	141B-2	WHITESIDE	77	36
				CONTRACT NO. 64D81

ILLINOIS FED. AID PROJECT