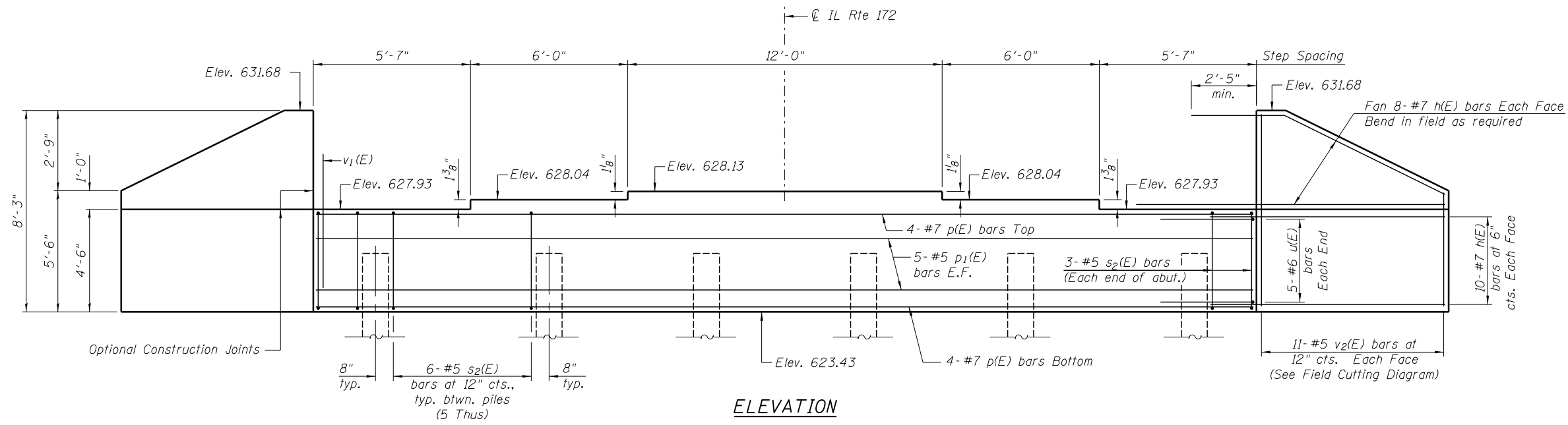
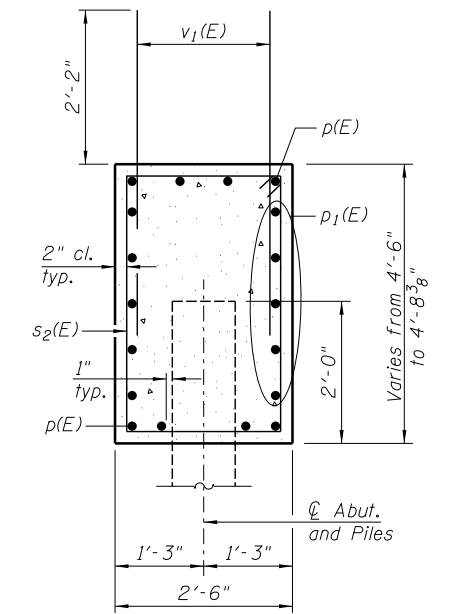


Notes:  
Pour steps monolithically with cap.



ELEVATION

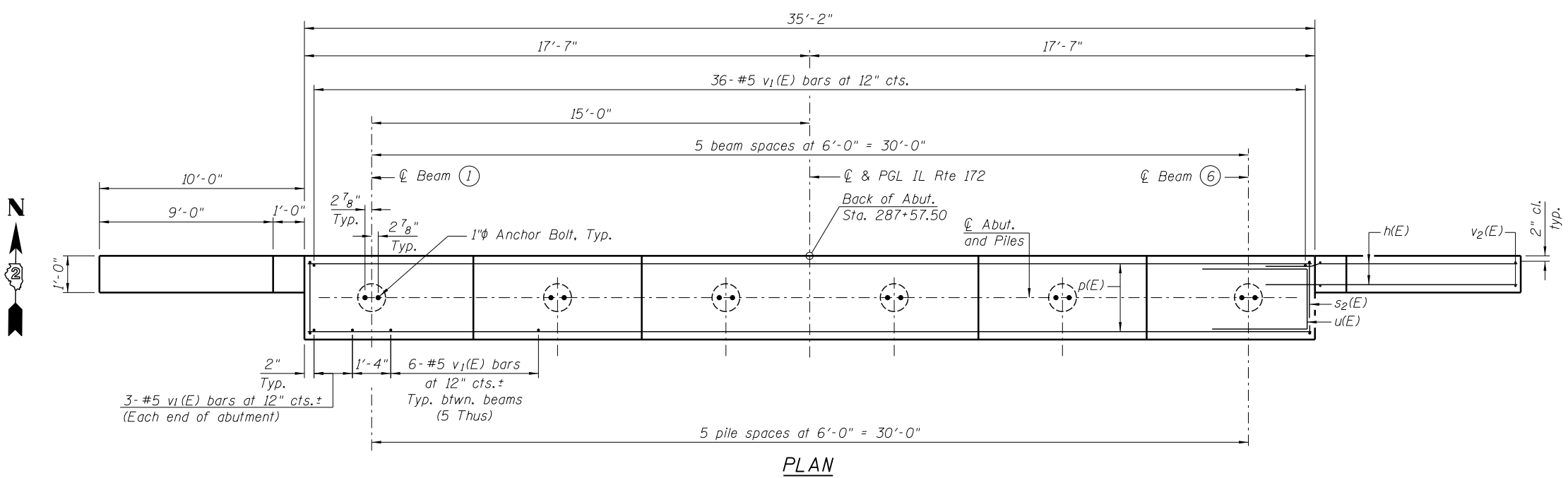


SEC. THRU ABUT.

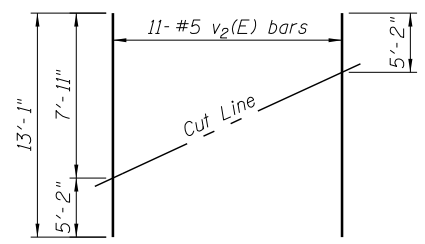
BILL OF MATERIAL

Bar	No.	Size	Length	Shape
h(E)	72	#7	12'-8"	—
p(E)	8	#7	34'-10"	—
p1(E)	10	#5	34'-10"	—
s2(E)	36	#5	13'-7"	□
u(E)	10	#6	12'-5"	□
v1(E)	72	#5	4'-4"	—
v2(E)	22	#5	13'-1"	—
Structure Excavation		Cu. Yd.		136
Concrete Structures		Cu. Yd.		20.1
Reinforcement Bars, Epoxy Coated		Pound		4,120
Furnishing Metal Shell Piles 14"x0.250"		Foot		354
Driving Piles		Foot		354

For details of metal shell piles, see sheet 16 of 19.  
Space reinforcement in cap to miss anchor bolts.



PLAN

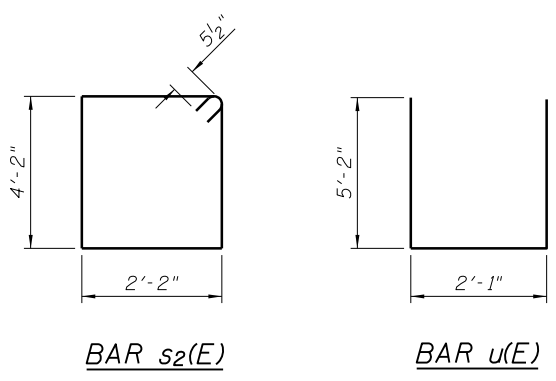


FIELD CUTTING DIAGRAM

Order v2(E) full length. Cut as shown and use remainder of bars in opposite face.

PILE DATA

Type: Metal Shell 14 in. dia. x 0.25 in. walls  
Nominal Required Bearing: 364k  
Factored Resistance Available: 200k  
Est. Length: 59'  
No. Production Piles: 6  
No. Test Piles: 0



BAR s2(E)

BAR u(E)

FILE NAME = ...64D81-SN0920119-015-Nor-abut.dgn



USER NAME = SAW  
DESIGNED - PMM  
CHECKED - DAZ  
PLOT SCALE = 0:2.0000 'ft' / in.  
DRAWN - SAW  
PLOT DATE = 6/12/2013  
CHECKED - LAS

REVISIED -  
REVISIED -  
REVISIED -  
REVISIED -

STATE OF ILLINOIS  
DEPARTMENT OF TRANSPORTATION

NORTH ABUTMENT  
S.N. 098-0119

SHEET NO. 15 OF 19 SHEETS

F.A.S. RTE.	SECTION	COUNTY	TOTAL SHEETS	SHEET NO.
200	141B-2	WHITESIDE	77	40
CONTRACT NO. 64D81				

ILLINOIS FED. AID PROJECT