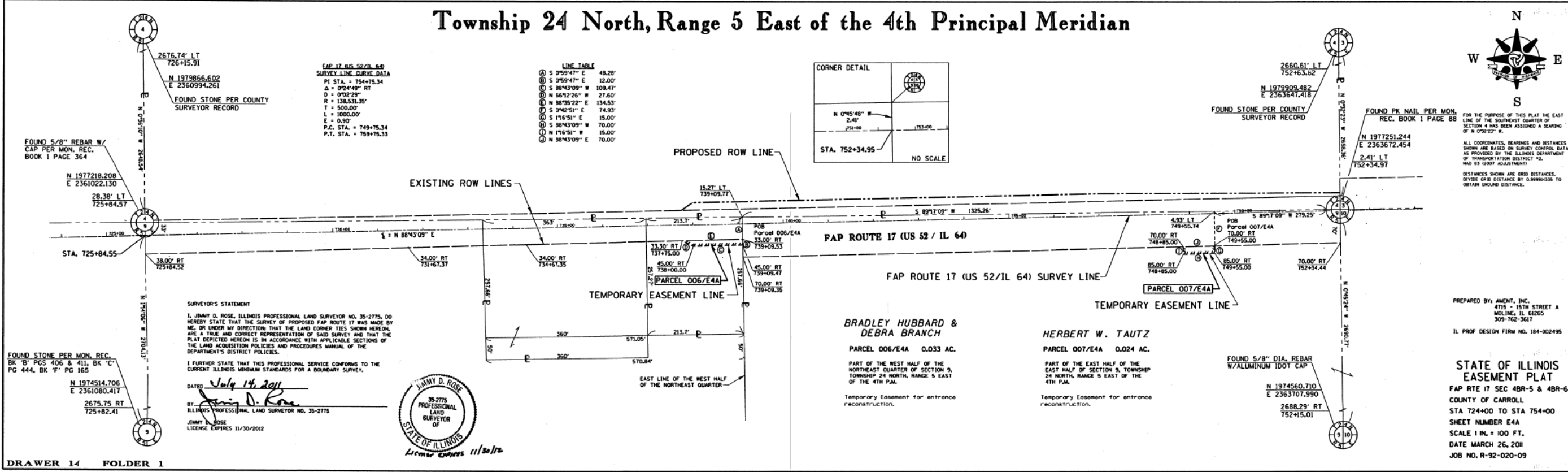
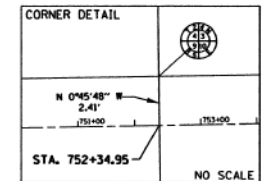


# Township 24 North, Range 5 East of the 4th Principal Meridian



**LINE TABLE**

① S 9°59'47" E	48.28'
② S 9°59'47" E	12.00'
③ S 88°43'09" W	109.47'
④ N 66°12'26" W	27.60'
⑤ N 88°35'22" E	134.53'
⑥ S 9°42'51" E	74.93'
⑦ S 1°16'51" E	15.00'
⑧ S 88°43'09" W	70.00'
⑨ N 1°16'51" E	15.00'
⑩ N 88°43'09" E	70.00'



**FAP 17 (US 52/IL 64) SURVEY LINE CURVE DATA**

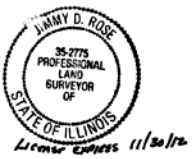
PI STA. = 754+75.34  
 $\Delta = 024^{\circ}48' RT$   
 $D = 02^{\circ}22'$   
 $R = 138,531.35'$   
 $T = 500.00'$   
 $L = 1000.00'$   
 $E = 0.90'$   
 P.C. STA. = 749+75.34  
 P.T. STA. = 759+75.33

**SURVEYOR'S STATEMENT**

I, JIMMY D. ROSE, ILLINOIS PROFESSIONAL LAND SURVEYOR NO. 35-2775, DO HEREBY STATE THAT THE SURVEY OF PROPOSED FAP ROUTE 17 WAS MADE BY ME, OR UNDER MY DIRECTION, THAT THE LAND CORNER TIES SHOWN HEREON, ARE A TRUE AND CORRECT REPRESENTATION OF SAID SURVEY AND THAT THE PLAT DEPICTED HEREON IS IN ACCORDANCE WITH APPLICABLE SECTIONS OF THE LAND ACQUISITION POLICIES AND PROCEDURES MANUAL OF THE DEPARTMENT'S DISTRICT POLICIES.

I FURTHER STATE THAT THIS PROFESSIONAL SERVICE CONFORMS TO THE CURRENT ILLINOIS MINIMUM STANDARDS FOR A BOUNDARY SURVEY.

DATED July 14, 2011  
 BY: Jimmy D. Rose  
 JIMMY D. ROSE  
 ILLINOIS PROFESSIONAL LAND SURVEYOR NO. 35-2775  
 LICENSE EXPIRES 11/30/2012



FOR THE PURPOSE OF THIS PLAT THE EAST LINE OF THE SOUTHEAST QUARTER OF SECTION 4 HAS BEEN ASSIGNED A BEARING OF N 0°32'23" W.

ALL COORDINATES, BEARINGS AND DISTANCES SHOWN ARE BASED ON SURVEY CONTROL DATA AS PROVIDED BY THE ILLINOIS DEPARTMENT OF TRANSPORTATION DISTRICT #2. HAD 83 (2007 ADJUSTMENT).

DISTANCES SHOWN ARE GRID DISTANCES. DIVIDE GRID DISTANCE BY 0.999981335 TO OBTAIN GROUND DISTANCE.

PREPARED BY: AMENT, INC.  
 4715 - 15TH STREET A  
 MOBILE, IL 61205  
 309-762-3617  
 IL PROF DESIGN FIRM NO. 184-002495

**STATE OF ILLINOIS EASEMENT PLAT**

FAP RTE 17 SEC 4BR-5 & 4BR-6  
 COUNTY OF CARROLL  
 STA 724+00 TO STA 754+00  
 SHEET NUMBER E4A  
 SCALE 1 IN. = 100 FT.  
 DATE MARCH 26, 2011  
 JOB NO. R-92-020-09

DRAWER 14 FOLDER 1

FILE NAME = *FILEL\$	USER NAME = *USER*	DESIGNED - RAC	REVISED -	<b>STATE OF ILLINOIS DEPARTMENT OF TRANSPORTATION</b>		Zroka Engineering, P.C. 4216 North Hermitage Chicago, IL 60613	F.A.P. RTE.	SECTION	COUNTY	TOTAL SHEETS	SHEET NO.
	PLOT SCALE = *SCALE*	CHECKED - DAZ	REVISED -				17	4BR-5 & 4BR-6	CARROLL	150	39
PLOT DATE = *DATE*	DATE - 06-28-13	REVISED -		SCALE: SHEET OF SHEETS STA. TO STA.			CONTRACT NO. 64D83		ILLINOIS FED. AID PROJECT		