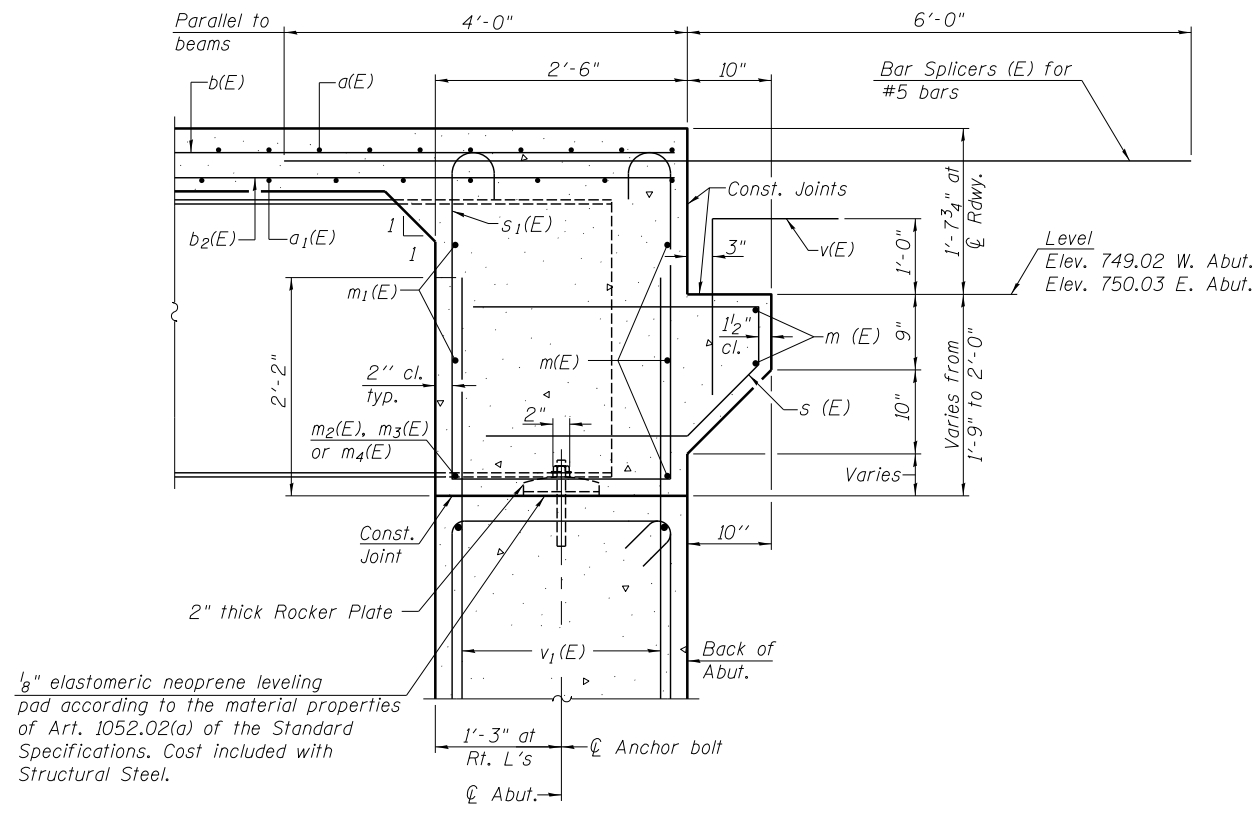


**DIAPHRAGM ELEVATION AT WEST ABUTMENT**  
(East Abutment Similar)

Notes:  
 Reinforcement bars in diaphragm are billed with superstructure on sheet SA-11 of SA-24.  
 Concrete in diaphragm is included with Concrete Superstructure on sheet SA-11 of SA-24.  
 For details of bars s(E) & s1(E) see sheet SA-11 of SA-24.  
 The s(E) and s1(E) bars shall be placed parallel to the beams. Spacing for these bars shall be at right angles to the beams.

**MIN. BAR LAP**  
 #6 bar = 3'-4"



**SECTION A-A**  
 Dimensions at right angles to abutment, except as shown.

FILE NAME = ...E4083-SN0080049-012-DiaphragmDetails.dgn