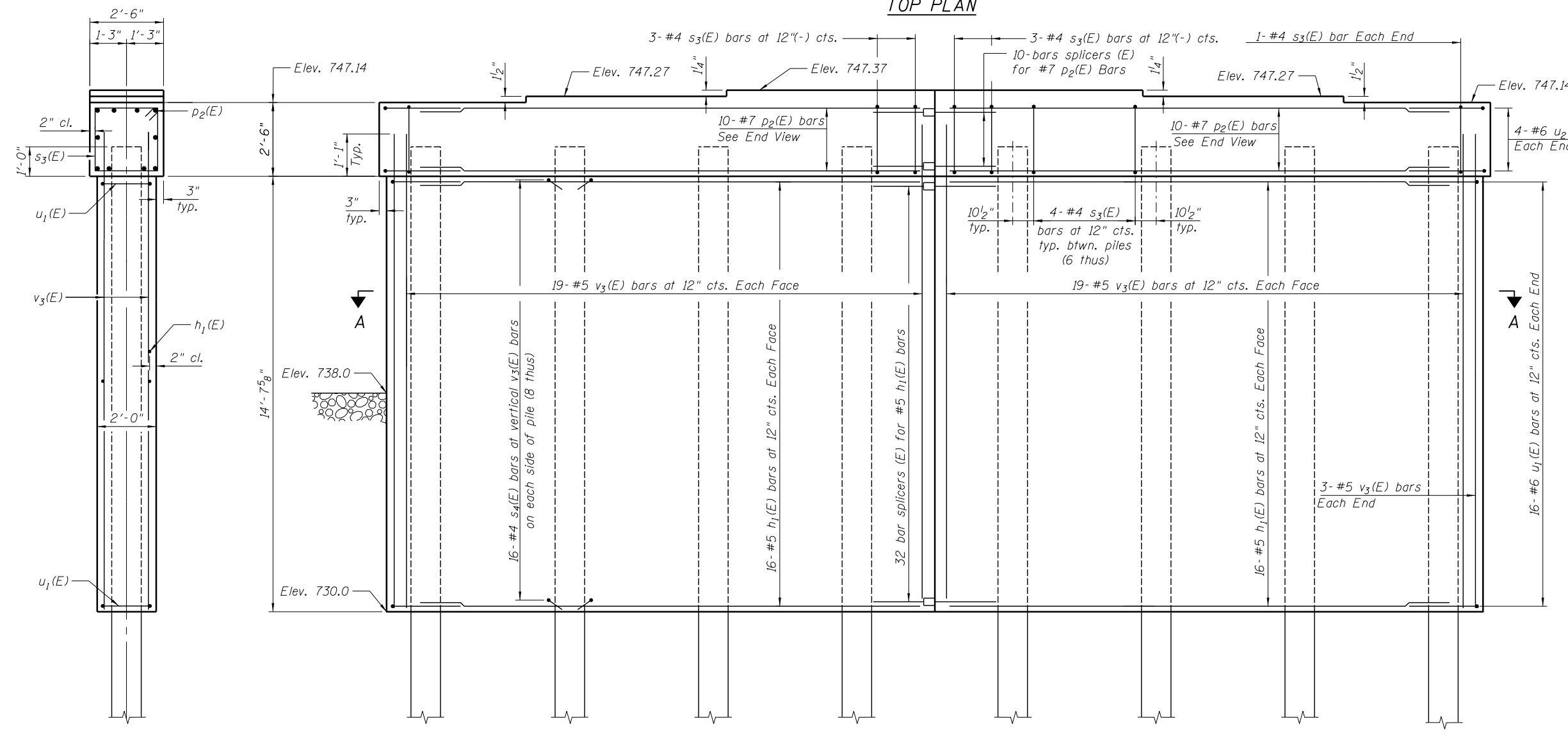
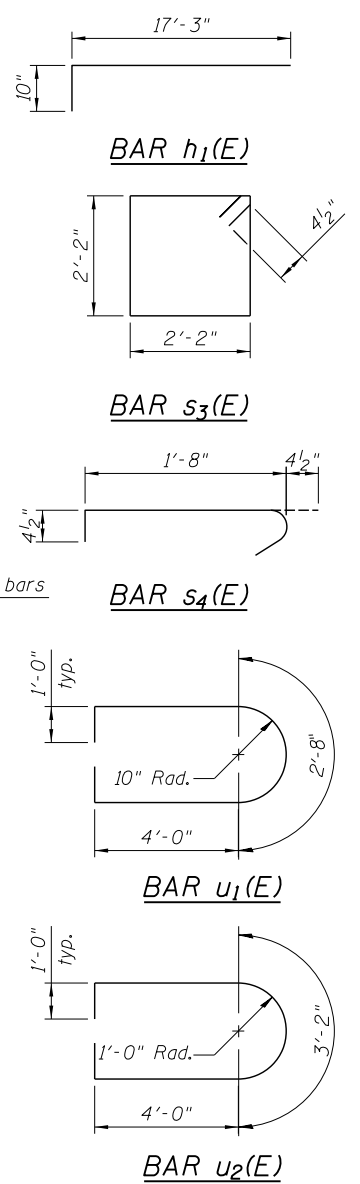
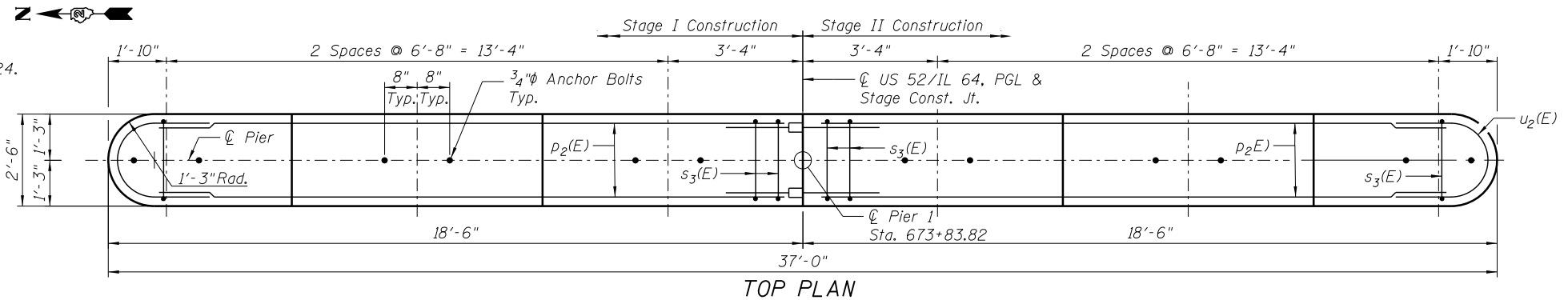
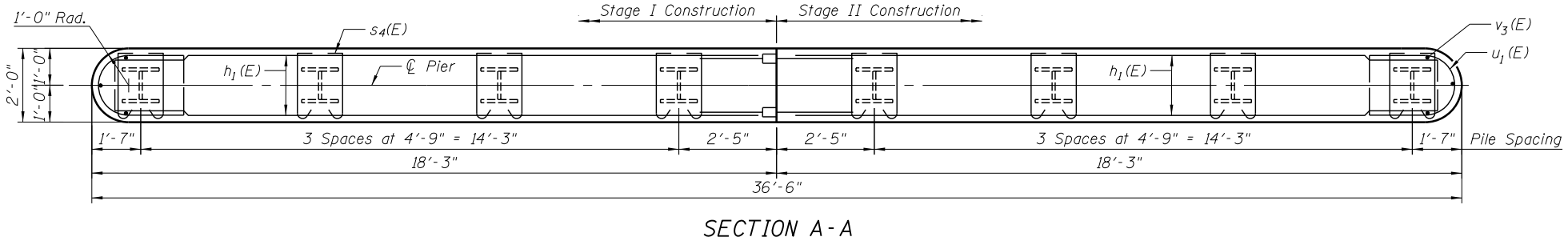


Notes:
 For Pile Details See Sheet SA-23 of SA-24.
 For Bar Splicer Details See Sheet SA-22 of SA-24.
 Cofferdam (Type 2) (Location 1) at Pier 1.



END VIEW



PILE DATA
 Type: HP14x73 with Pile Shoes
 Nominal Required Bearing: 578 kips
 Factored Resistance Available: 317 kips
 Est. Length: 46.6'
 No. Production Piles: 7
 No. Test Piles: 1

BILL OF MATERIAL

Bar	No.	Size	Length	Shape
h ₁ (E)	64	#5	18'-1"	—
p ₂ (E)	20	#7	17'-1"	—
s ₃ (E)	32	#5	9'-5"	□
s ₄ (E)	256	#4	2'-5"	┌
u ₁ (E)	32	#6	12'-8"	⊔
u ₂ (E)	8	#6	13'-2"	⊔
v ₃ (E)	82	#5	15'-6"	—
Cofferdam Excavation		Cu. Yd.	191	
Concrete Structures		Cu. Yd.	48.0	
Reinforcement Bars, Epoxy Coated		Pound	4,730	
Furnishing Steel Piles HP14x73		Foot	326	
Test Pile Steel HP14x73		Each	1	
Driving Piles		Foot	326	
Pile Shoes		Each	8	
Cofferdam (Type 2) (Location 1)		Each	1	

FILE NAME = ...E4DB3-SN0080049-020-Pier-1.dgn



USER NAME = SAW	DESIGNED - JLA	REVISED -
PLOT SCALE = 0:2.0000 '1' / in.	CHECKED - DAZ	REVISED -
PLOT DATE = 8/19/2013	DRAWN - SAW	REVISED -
	CHECKED - JLA	REVISED -

**STATE OF ILLINOIS
 DEPARTMENT OF TRANSPORTATION**

**PIER 1
 S.N. 008-0049**
 SHEET NO. SA-20 OF SA-24 SHEETS

F.A.P. RTE.	SECTION	COUNTY	TOTAL SHEETS	SHEET NO.
17	4BR-5	CARROLL	150	59
CONTRACT NO. 64D83				
ILLINOIS FED. AID PROJECT				