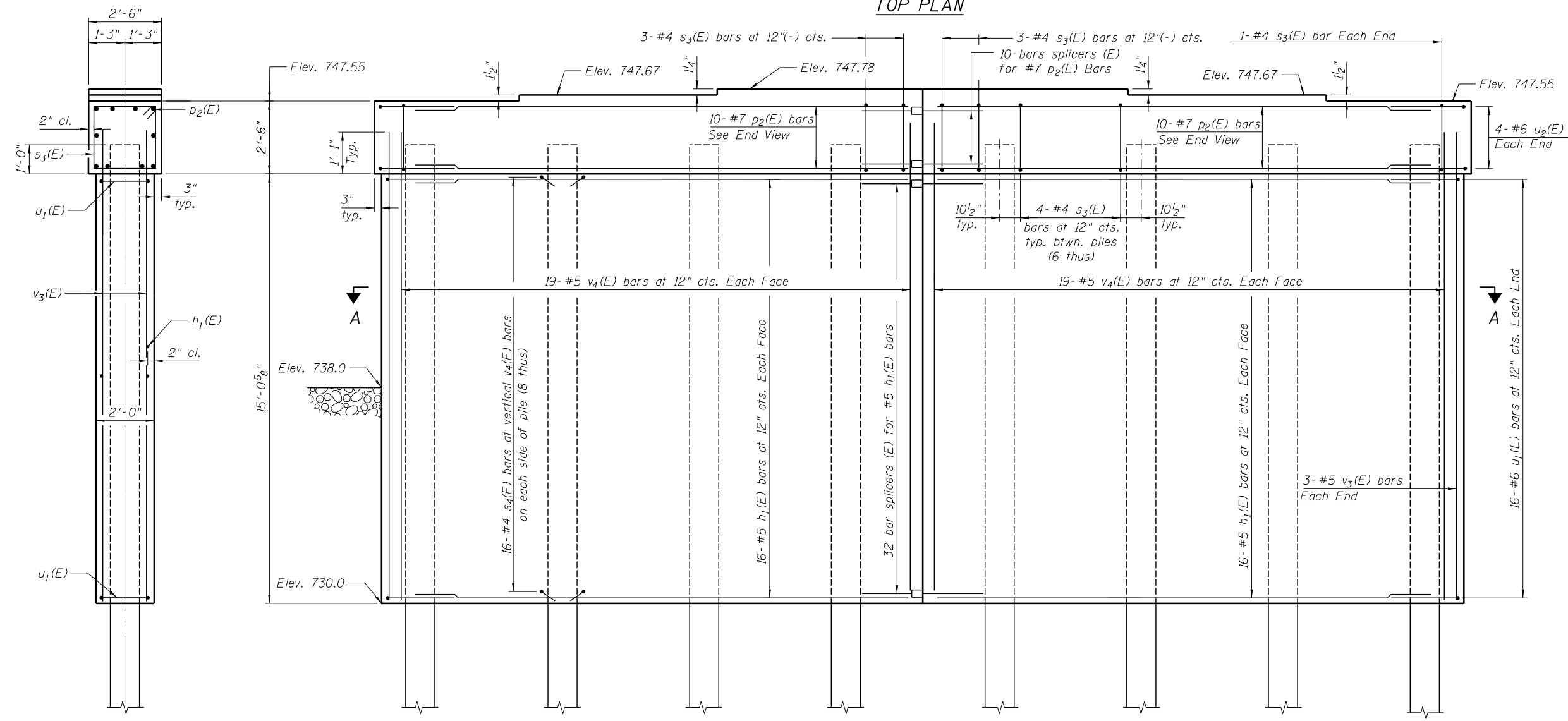
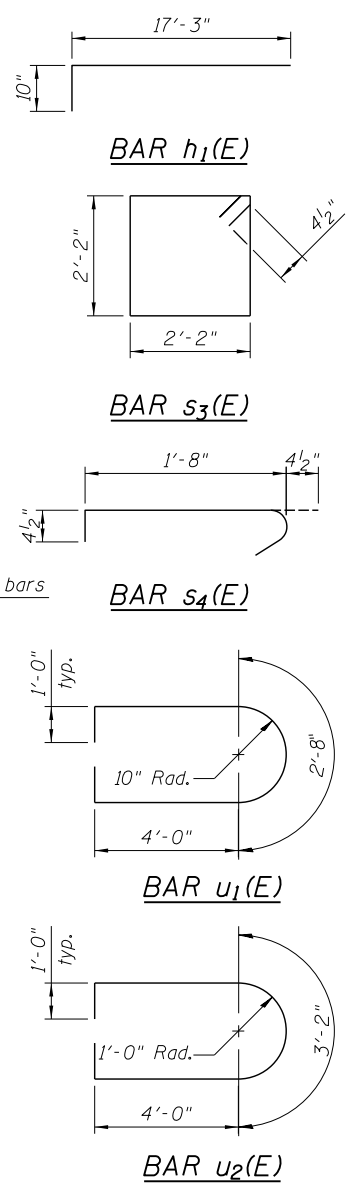
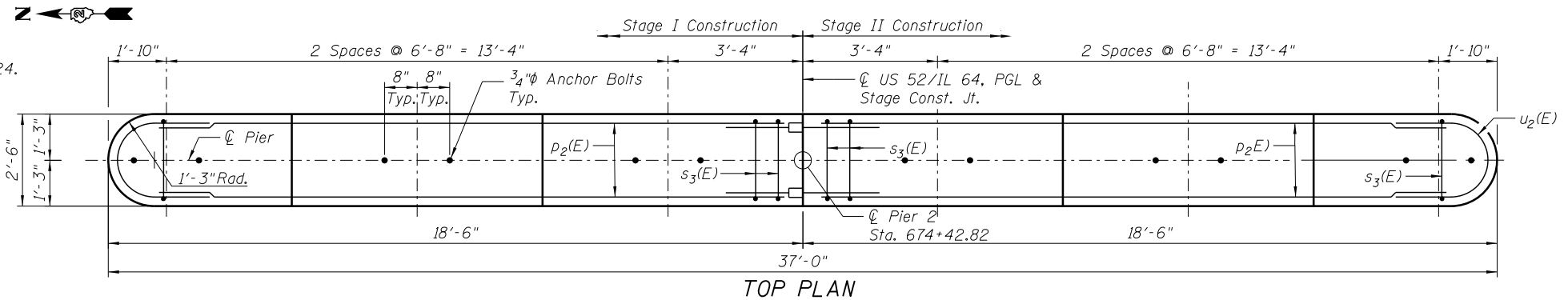
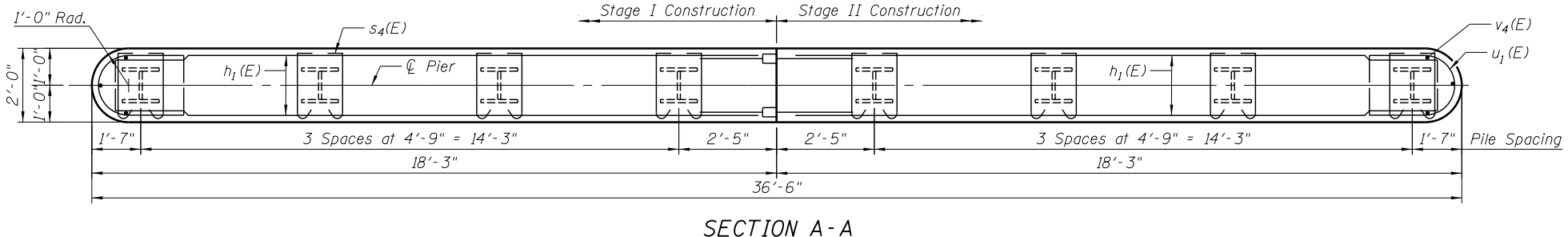


Notes:  
 For Pile Details See Sheet SA-23 of SA-24.  
 For Bar Splicer Details See Sheet SA-22 of SA-24.  
 Cofferdam (Type 2) (Location 2) at Pier 2.



END VIEW



**PILE DATA**  
 Type: HP14x73 with Pile Shoes  
 Nominal Required Bearing: 578 kips  
 Factored Resistance Available: 317 kips  
 Est. Length: 39.1'  
 No. Production Piles: 7  
 No. Test Piles: 1

**BILL OF MATERIAL**

Bar	No.	Size	Length	Shape
h <sub>1</sub> (E)	64	#5	18'-1"	—
p <sub>2</sub> (E)	20	#7	17'-1"	—
s <sub>3</sub> (E)	32	#5	9'-5"	□
s <sub>4</sub> (E)	256	#4	2'-5"	┌┐
u <sub>1</sub> (E)	32	#6	12'-8"	⊔
u <sub>2</sub> (E)	8	#6	13'-2"	⊔
v <sub>4</sub> (E)	82	#5	15'-11"	—
Cofferdam Excavation		Cu. Yd.	190	
Concrete Structures		Cu. Yd.	49.1	
Reinforcement Bars, Epoxy Coated		Pound	4,760	
Furnishing Steel Piles HP14x73		Foot	274	
Test Pile Steel HP14x73		Each	1	
Driving Piles		Foot	274	
Pile Shoes		Each	8	
Cofferdam (Type 2) (Location 2)		Each	1	

FILE NAME = ...E4DB3-SN0080049-021-Pier-2.dgn



USER NAME = SAW	DESIGNED - JLA	REVISED -
	CHECKED - DAZ	REVISED -
PLOT SCALE = 0:2.0000 '1" / in.	DRAWN - SAW	REVISED -
PLOT DATE = 8/19/2013	CHECKED - JLA	REVISED -

STATE OF ILLINOIS  
 DEPARTMENT OF TRANSPORTATION

PIER 2  
 S.N. 008-0049  
 SHEET NO. SA-21 OF SA-24 SHEETS

F.A.P. RTE. 17	SECTION 4BR-5	COUNTY CARROLL	TOTAL SHEETS 150	SHEET NO. 60
				CONTRACT NO. 64DB3
ILLINOIS FED. AID PROJECT				